

BENCHMARKS:

BM #1: Brass Disc on Top of Curb near the SW corner of Lot 67, Block D, near fire hydrant at NE corner of Cimarron & Driftwood, Edge Water Addition
Elev. = 1339.44 NGVD29

BM #2: "□" on Top of Curb, SE Corner of Lot 21, Block A: west side of Ridge Port, Edge Water Addition
Elev. = 1336.02 NGVD29

BM #3: Brass Disc on Top of Curb near the NE corner of Lot 27, Block A, near fire hydrant at SW corner of Ridge Port & Ridge Port Ct., Edge Water Addition
Elev. = 1337.42 NGVD29

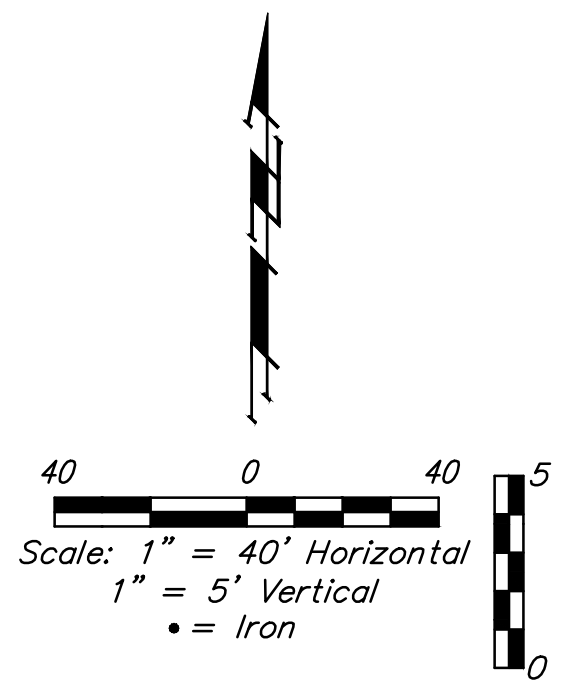
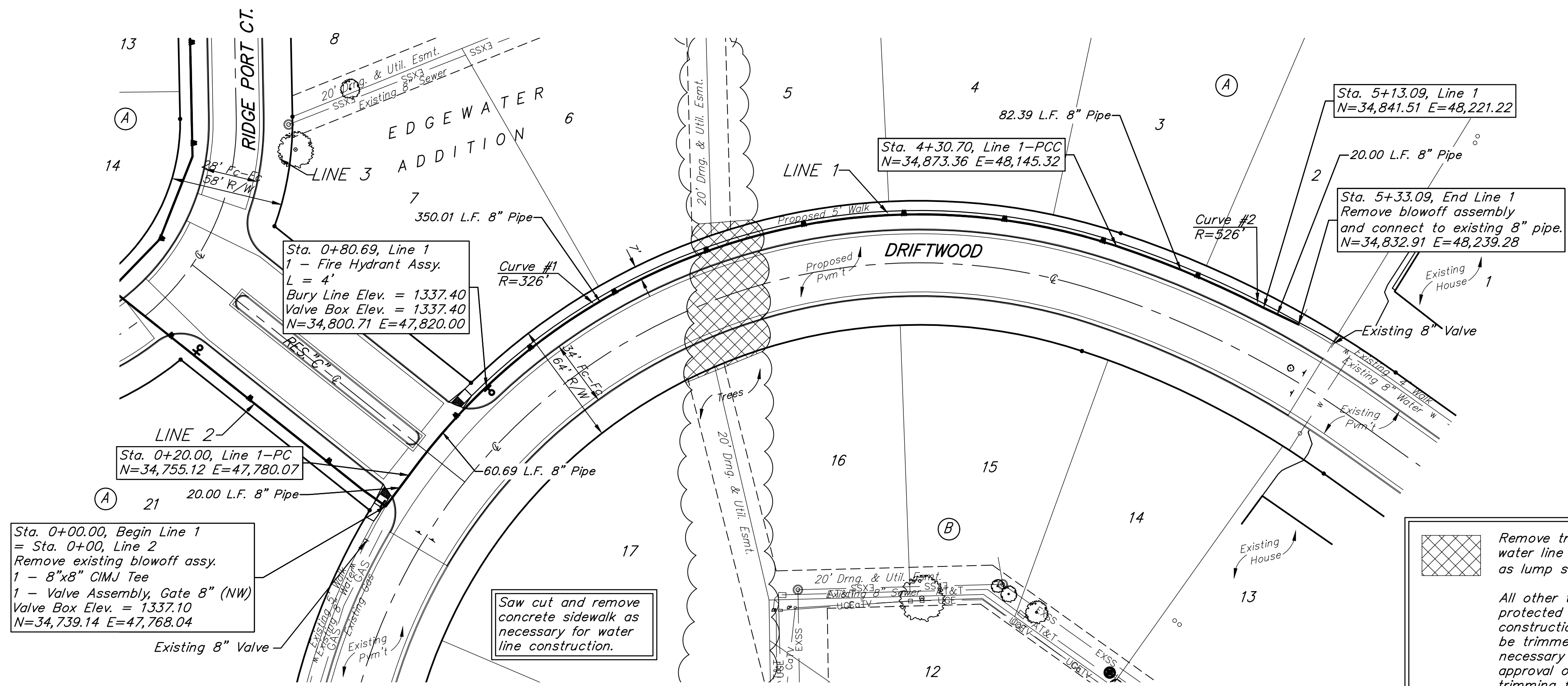
Curve #1
Curve Data Based on Waterline
Rad. = 326' Delta = 72° 24' 14" Tangent = 238.61'
Arc = 410.70' L.C. = 385.09' Def./Ft. = 5.28882 Min.

| Station | Arc | Chord Lengths | Defl. | Total Defl. |
|---------|--------|---------------|------------|-------------|
| 0+20.00 | - | 6' Left | 0' 00' 00" | 0' 00' 00" |
| 0+25.00 | 5.00' | 5.11' | 0' 26' 27" | 0' 26' 27" |
| 0+50.00 | 25.00' | 25.53' | 2' 12' 13" | 2' 38' 40" |
| 0+75.00 | 25.00' | 25.53' | 2' 12' 13" | 4' 50' 53" |
| 0+80.69 | 5.69' | 5.81' | 0' 30' 06" | 5' 20' 59" |
| 1+00.00 | 19.31' | 19.72' | 1' 42' 07" | 7' 03' 06" |
| 1+25.00 | 25.00' | 25.53' | 2' 12' 13" | 9' 15' 20" |
| 1+50.00 | 25.00' | 25.53' | 2' 12' 13" | 11' 27' 33" |
| 1+75.00 | 25.00' | 25.53' | 2' 12' 13" | 13' 39' 46" |
| 2+00.00 | 25.00' | 25.53' | 2' 12' 13" | 15' 51' 59" |
| 2+25.00 | 25.00' | 25.53' | 2' 12' 13" | 18' 04' 12" |
| 2+50.00 | 25.00' | 25.53' | 2' 12' 13" | 20' 16' 26" |
| 2+75.00 | 25.00' | 25.53' | 2' 12' 13" | 22' 28' 39" |
| 3+00.00 | 25.00' | 25.53' | 2' 12' 13" | 24' 40' 52" |
| 3+25.00 | 25.00' | 25.53' | 2' 12' 13" | 26' 53' 05" |
| 3+50.00 | 25.00' | 25.53' | 2' 12' 13" | 29' 05' 19" |
| 3+75.00 | 25.00' | 25.53' | 2' 12' 13" | 31' 17' 32" |
| 4+00.00 | 25.00' | 25.53' | 2' 12' 13" | 33' 29' 45" |
| 4+25.00 | 25.00' | 25.53' | 2' 12' 13" | 35' 41' 58" |
| 4+30.70 | 5.70' | 5.82' | 0' 30' 09" | 36' 12' 07" |

Curve #2
Curve Data Based on Waterline
Rad. = 526' Delta = 8° 59' 32" Tangent = 41.36'
Arc = 82.39' L.C. = 82.47' Def./Ft. = 3.27426 Min.

| Station | Arc | Chord Lengths | Defl. | Total Defl. |
|---------|--------|---------------|------------|-------------|
| 4+30.70 | - | 6' Left | 0' 00' 00" | 0' 00' 00" |
| 4+50.00 | 19.30' | 19.56' | 1' 03' 12" | 1' 03' 12" |
| 4+75.00 | 25.00' | 25.33' | 1' 21' 51" | 2' 25' 03" |
| 5+00.00 | 25.00' | 25.33' | 1' 21' 51" | 3' 46' 54" |
| 5+13.09 | 13.09' | 13.27' | 0' 42' 52" | 4' 29' 46" |

DEPTH UNKNOWN
Contractor to Verify
Depth & Location of
Existing Water Line
Prior to Construction.



Remove trees only as necessary for water line construction. To be paid for as lump sum bid item "Site Clearing"

All other trees shall remain and be protected from damage during construction. Overhanging limbs shall be trimmed by the Contractor only as necessary for construction and with approval of the Engineer. Cost of tree trimming to be included in bid item "Site Clearing"

