

# GENERAL NOTES:

1. Contractor will be required to provide notice to utility companies a minimum of forty-eight (48) hours prior to any excavation, as follows:

Kansas One-Call 687-2470

The Contractor must notify the following in case of an emergency:

- Cox Communications 262-4270
- Kansas Gas Service 1-888-482-4950
- Westar Energy 383-8650
- Aquila Energy 1-800-303-0357
- AT&T 268-2245
- City of Wichita Water Dept. 268-4563
- City of Wichita Sewer Maint. 268-4024
- City of Wichita Storm Sewer Maint. 268-4090
- City of Wichita Traffic Maint. 268-4034
- Conoco Phillips Pipeline Co. 1-877-267-2290
- Southern Star Pipeline Co. 529-6600
- Kinder-Morgan Pipeline Co. 1-888-844-5658

2. Utility service lines, poles, valve boxes, meters, and etcetera are to be adjusted as necessary by others prior to construction unless the plans specifically call for their adjustment by the Contractor or unless the plans specifically identify a utility to be adjusted by its owner during construction. Existing utilities and their location, as shown on the plans, represent the best information obtainable for design. The Contractor will be required to work around existing utilities within the right-of-way which do not conflict with proposed construction.

3. Rubble from the removal of miscellaneous structures and excess excavation which is to be wasted shall be disposed of on sites to be provided by the Contractor. These sites shall be approved by the Engineer as to suitability, appearance and site location. Locations, in the opinion of the Engineer, that will leave an unsightly appearance will not be approved. All disposal sites must be approved by the Kansas Department of Health and Environment. Material either stockpiled or disposed of in a flood plain would require a Kansas State Board of Agriculture permit. Any material dumped in waters of the United States or wetlands is subject to U.S. Corps. of Engineers permitting regulations. Any material buried or stockpiled beyond approved construction limits would require additional archaeological investigations unless buried in a previously approved borrow location.

4. Trees and shrubs in public right-of-way which are in direct conflict with proposed new construction shall be removed by the Contractor with the Engineer's approval. Trees and shrubs which are not in direct conflict with proposed new construction shall be saved and protected from damage.

5. The Contractor shall give all property owners and/or tenants of developed property abutting the construction of this project a minimum of ten (10) days notice prior to start of construction.

6. The Contractor shall be responsible for preserving property irons. The Contractor will be required to re-establish any property irons which are damaged or destroyed by his construction operations. Such irons shall be re-established by a licensed land surveyor in accordance with state laws.

7. All existing and proposed erosion control measures including silt fencing, erosion control mat, straw bales, inlet barriers, and const. entrance shall be maintained throughout construction by the contractor and until project is accepted by the City of Wichita. The on-site engineer shall complete weekly reports on the status of erosion control measures. The contractor shall be required to comply with maintenance and/or replacement of erosion control measures as determined by the on-site engineer until project is accepted by City of Wichita. Maintenance and/or replacement of erosion control measures to be paid by L.S. bid item "Maintain Existing BMP's."

8. All excess excavation shall remain on-site and shall be stockpiled or spread at a location determined by the engineer.

9. The Contractor shall be responsible for maintaining continuous flow of sewage through construction. Contractor's proposed method for maintaining sewage flow shall be approved by the Engineer. Cost of maintaining flow of sewage through construction will not be paid for directly and this cost shall be considered as subsidiary to the other pay items of work.

10. All areas disturbed during construction shall be seeded as follows (Temporary Seeding):

Seed: Rye grass (PLS)--5 lbs./1000 Sq. Ft.

All costs associated with seeding shall be included in bid item "Seeding". All seeding operations shall conform to City of Wichita Standard Specifications.

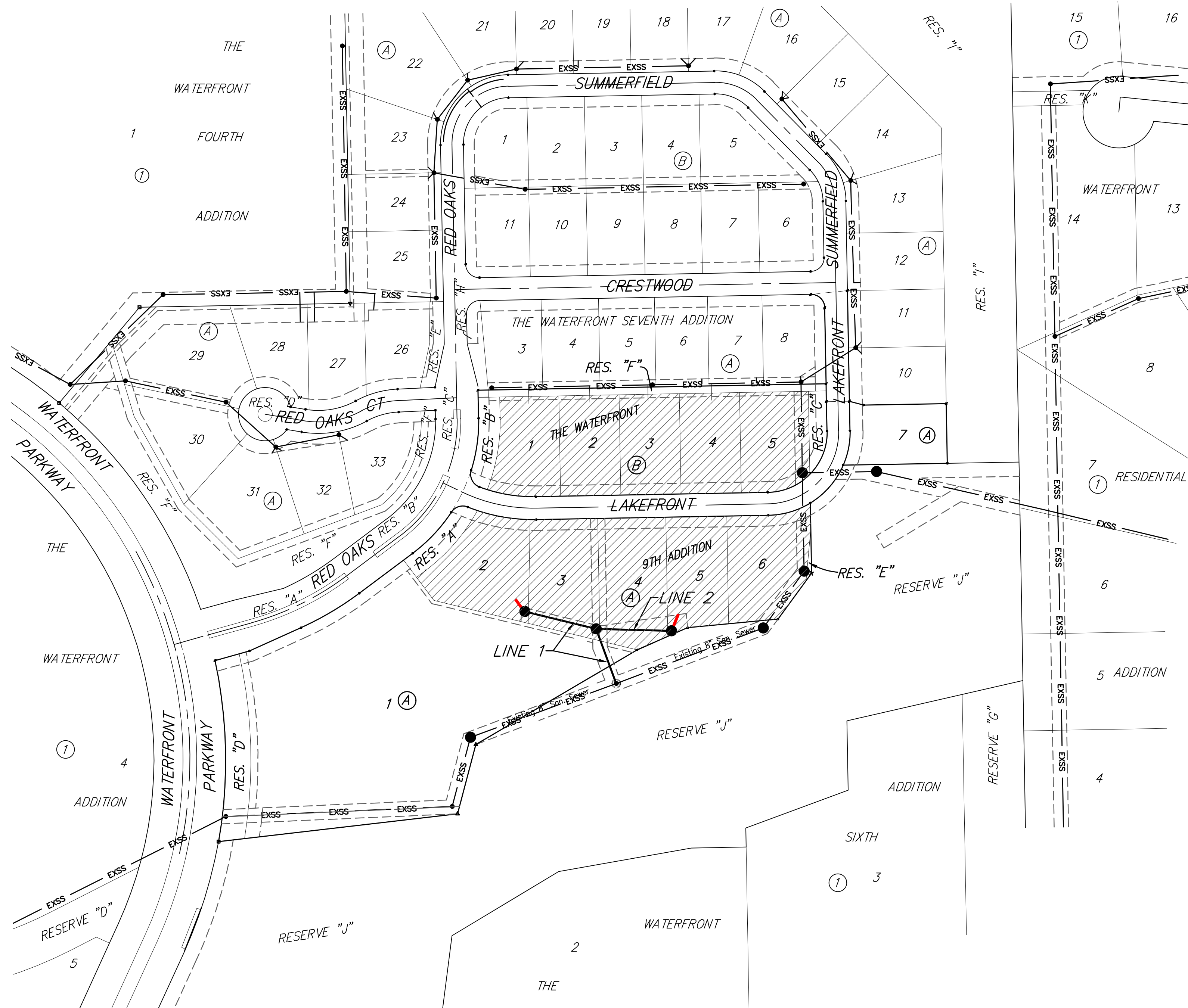
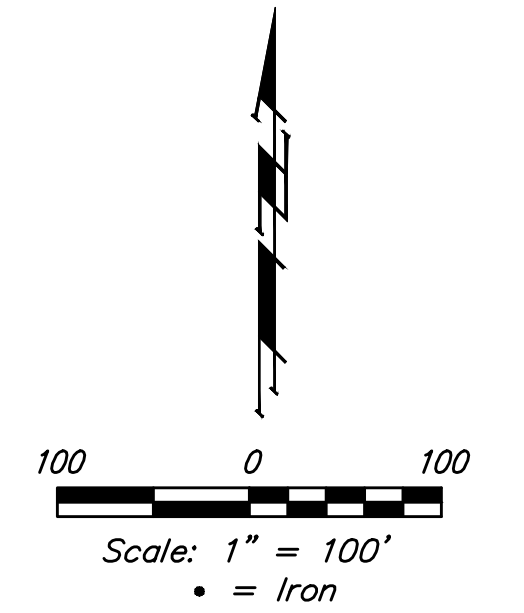
11. The Developer for this project is Johnny Stevens and may be reached at (316) 636-2100.

# Lateral 66, Main 24, War Industries Sewer SANITARY SEWER IMPROVEMENTS to serve

# THE WATERFRONT 9TH ADDITION CITY OF WICHITA, KANSAS

Gary Janzen, P.E. City Engineer  
Project Number 468 - 85191  
OCA Number 744438

Utility Solutions of Kansas - Contractor  
J. Brand - City of Wichita, Field Project Engineer  
S. May - City of Wichita, Inspector  
Stubs  
Completion Date: 2/8/18  
pdf: apr 9/29/2017



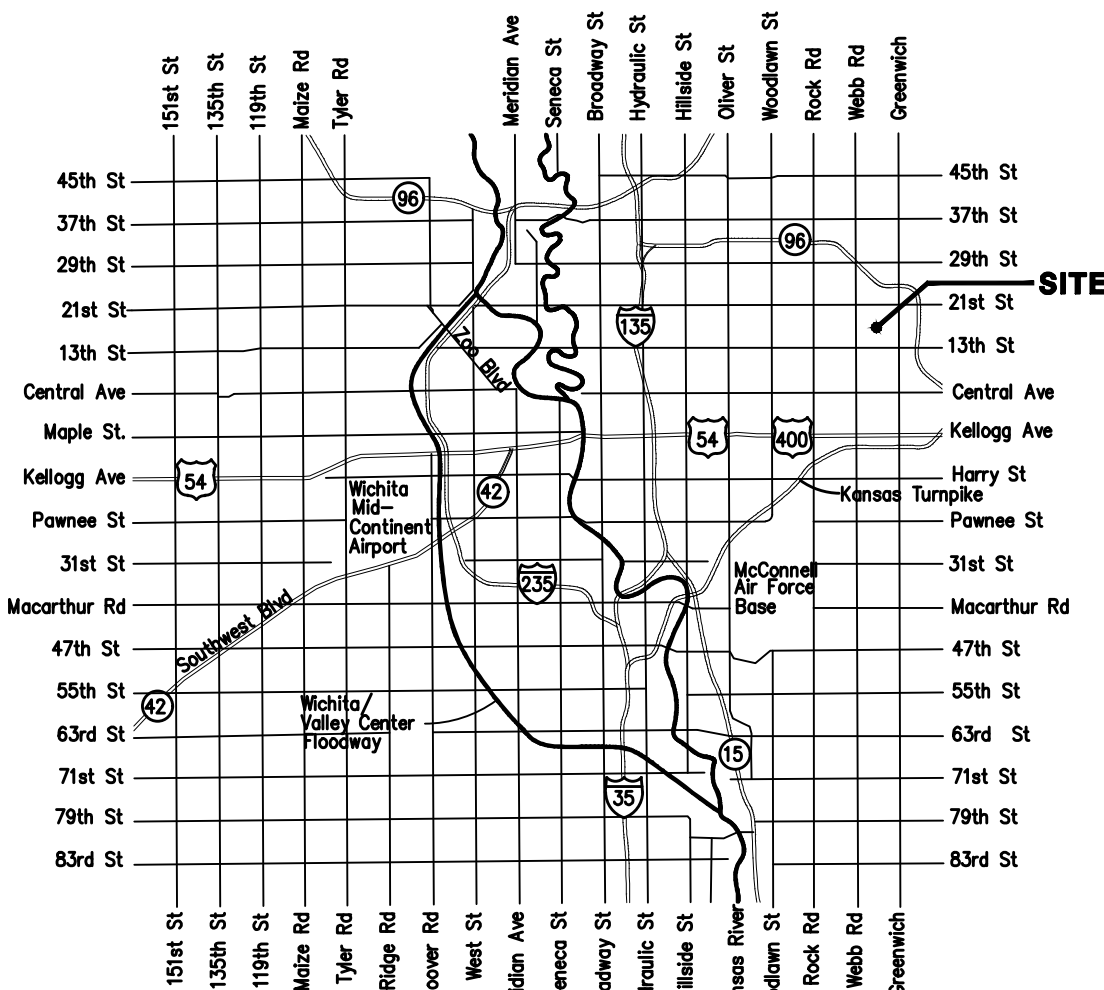
## BENCHMARKS

**BENCHMARK #1:**  
Chiseled square on top of curb, west end of south median curb within Red Oaks R/W, east side of Waterfront Parkway R/W.  
Elev. = 1380.50 NAVD88

**BENCHMARK #2:**  
Chiseled cross on conc. sidewalk, deflection corner in northwest line of Reserve "J", The Waterfront Seventh Addition.  
Elev. = 1381.88 NAVD88

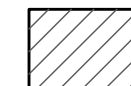
## SHEET INDEX

Title Sheet	1
Line 1 & Line 2	2
Erosion Control Plan	3
Erosion Control BMP Details	4-8
Standard Manhole Detail	9
Ring & Cover Detail	10
Coordinate Sheet	11
Copy of Plat	12

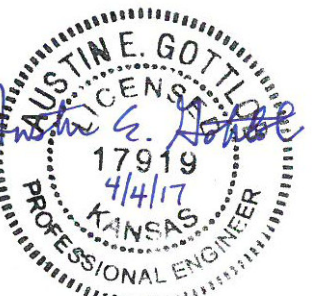


Vicinity Map

BENEFIT DISTRICT

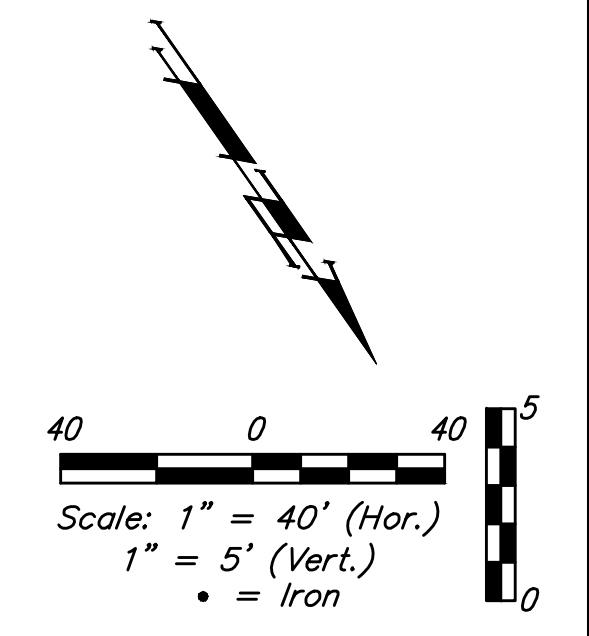
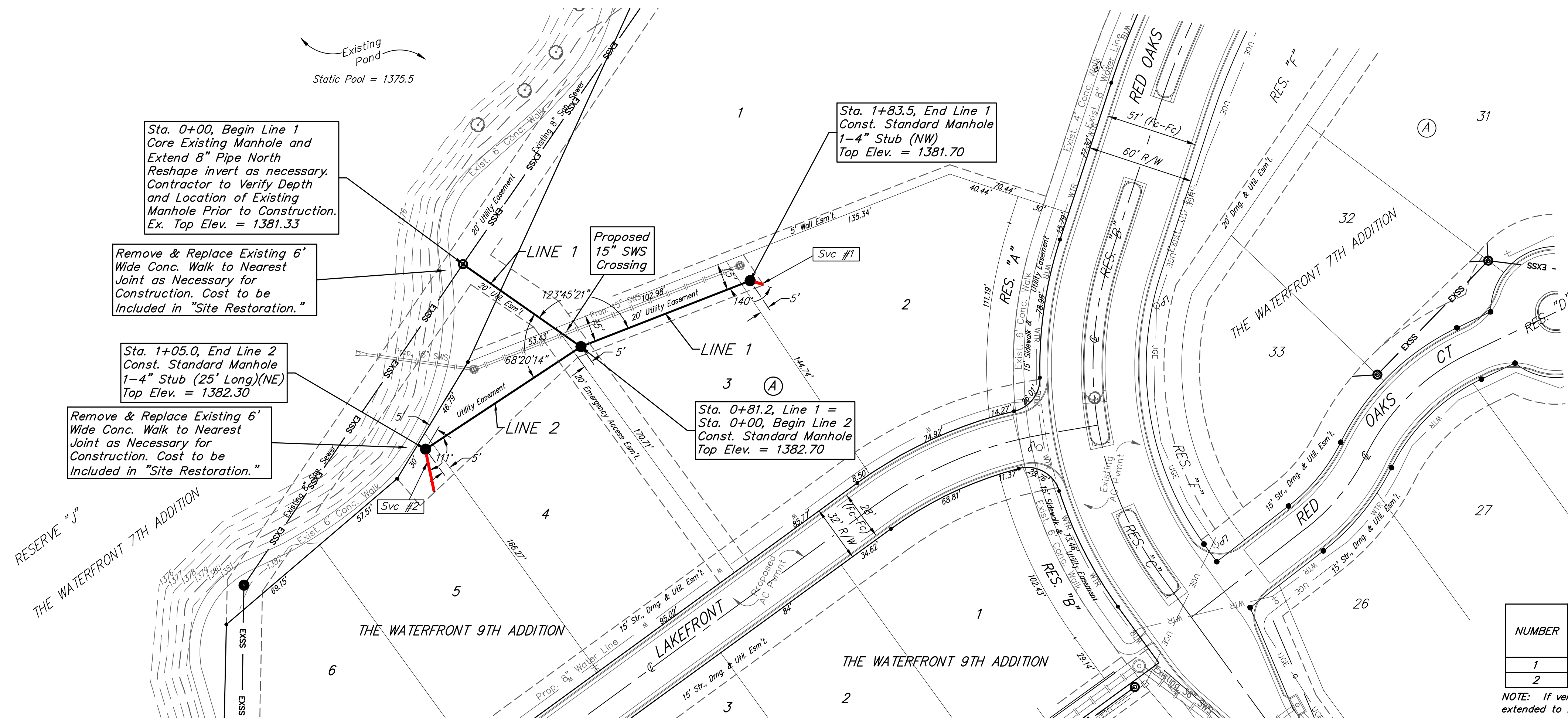


Baughman Company, P.A. 315 Ellis St. Wichita, KS 67211 P 316-262-7271 F 316-262-0149  
ENGINEERING | SURVEYING | PLANNING | LANDSCAPE ARCHITECTURE



**BENCHMARK #1:**  
Chiseled square on top of curb, west end of south median curb within Red Oaks R/W, east side of Waterfront Parkway R/W, Elev. = 1380.50 NAVD88

**BENCHMARK #2:**  
Chiseled cross on conc. sidewalk, deflection corner in northwest line of Reserve "J", The Waterfront Seventh Addition, Elev. = 1381.88 NAVD88

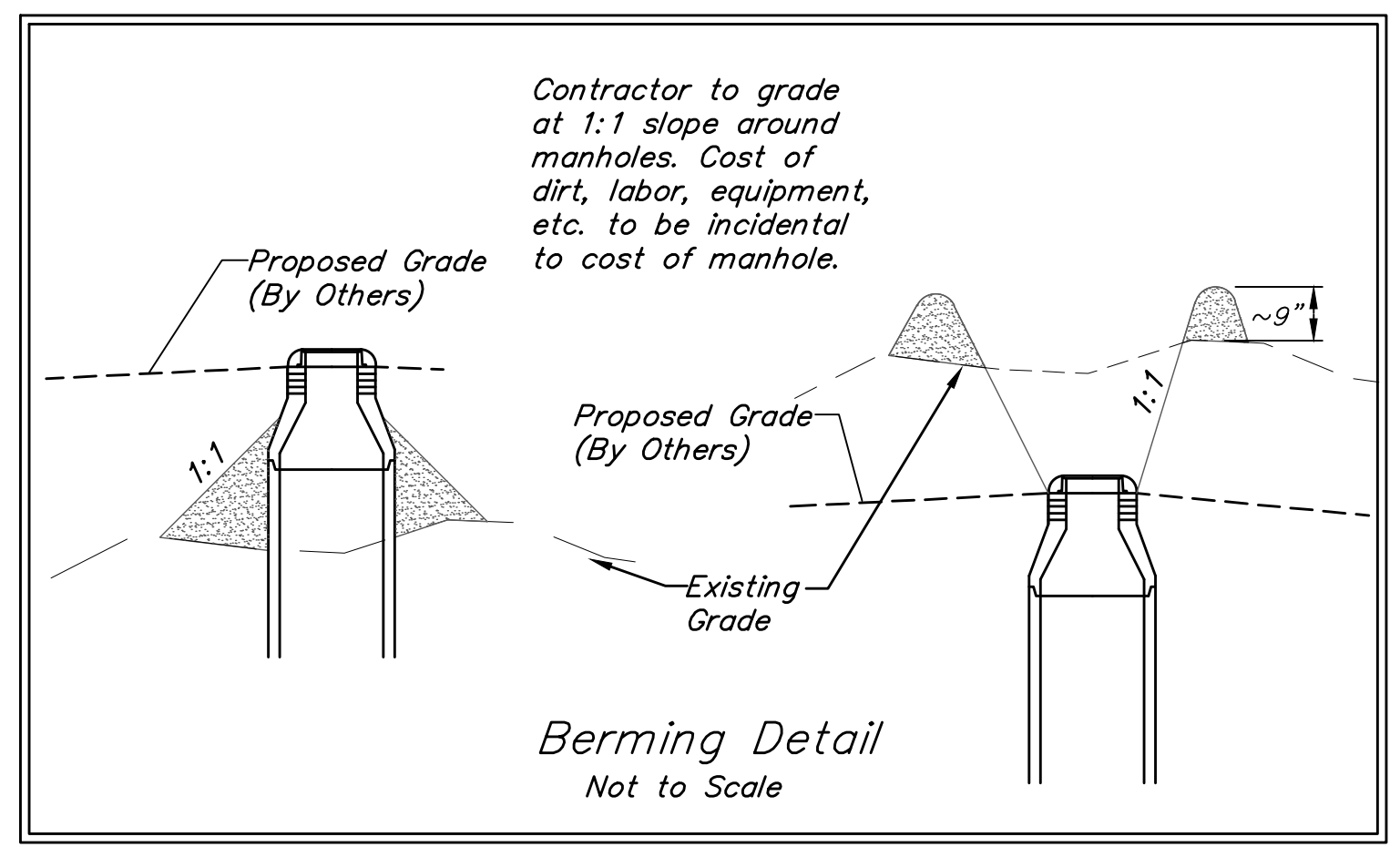
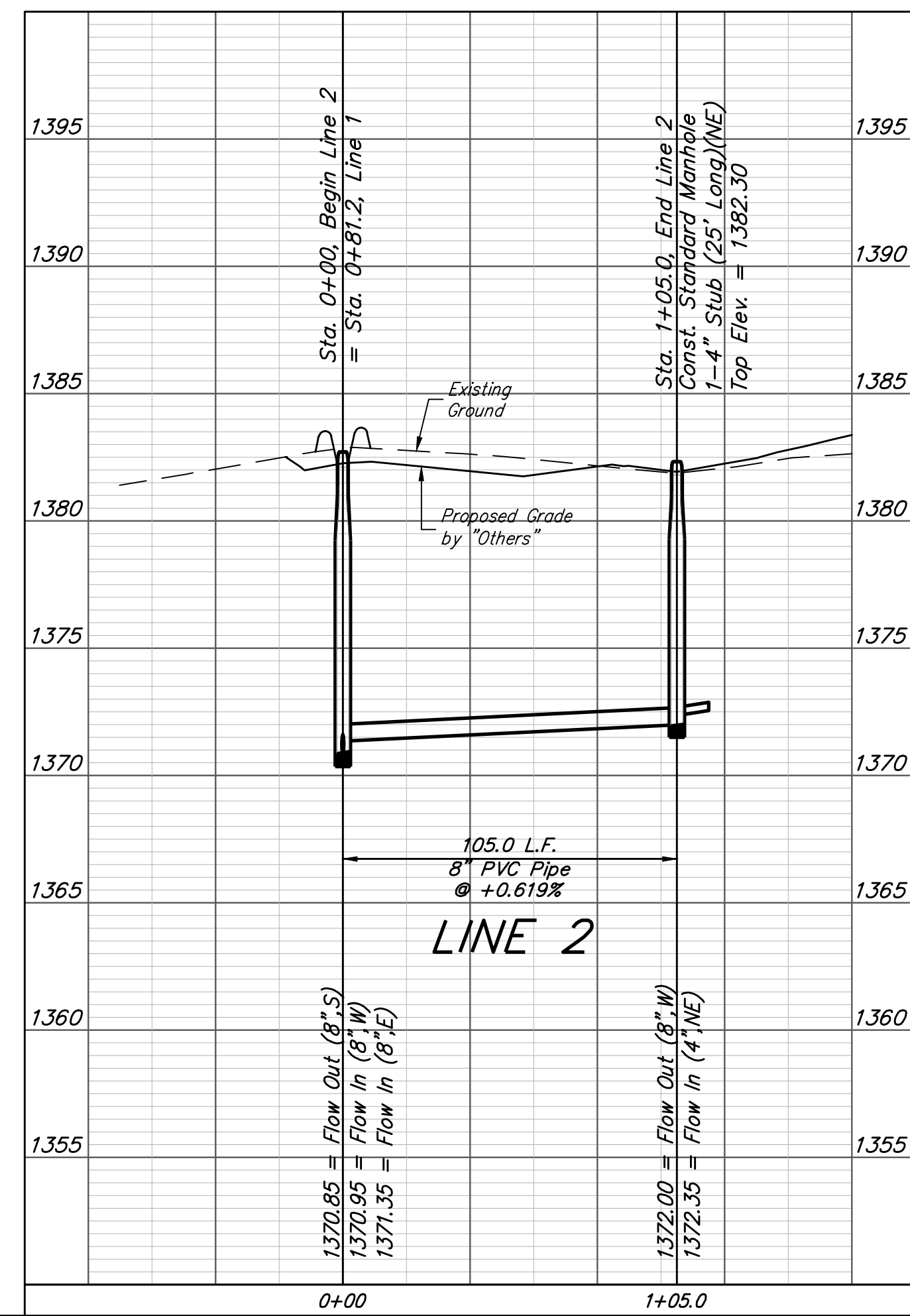
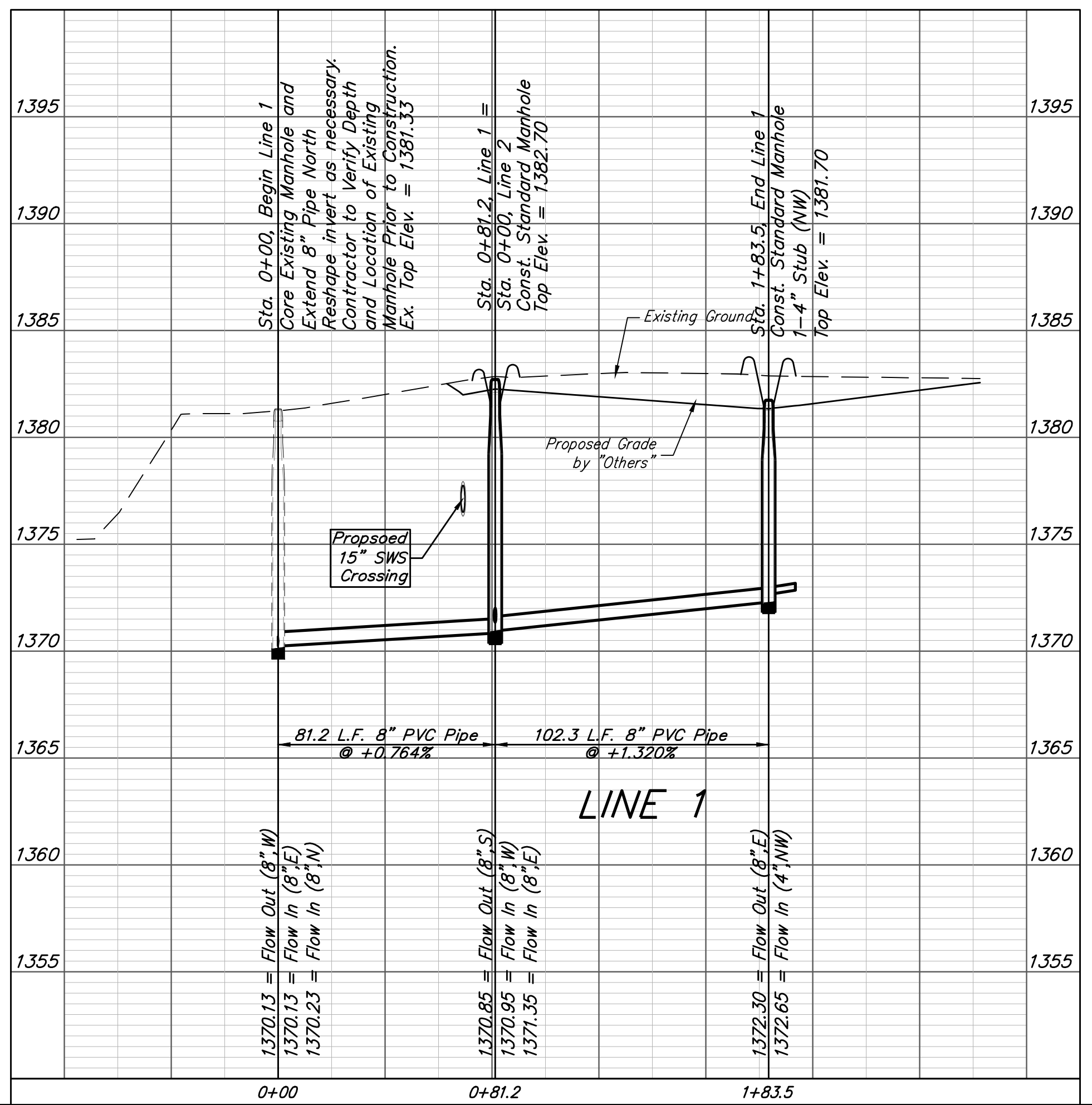


The Contractor shall be required to backfill trench with sand from Sta. 0+50 to Sta. 0+90, Line 1 and from Sta. 0+00 to Sta. 0+20, Line 2. To be bid as "L.F. Fill, Sand, Flushed & Vibrated"

SEWER SERVICE TABLE

NUMBER	TYPE	LOCATION			FOR INFORMATION ONLY	
		LOT NO.	BLOCK NO.	LINE STATION/DIRECTION	APPROXIMATE LENGTH 4" PIPE	VERTICAL
1	4" Stub	2	A	1 1+83.5/Rt.	-	8'
2	4" Stub	5	A	2 1+05.0/Lt.	-	25'

NOTE: If vertical riser pipe length is greater than zero, the vertical portion of the riser shall be extended to 2' minimum above ground water elevation and 4' maximum below proposed ground elevation.



**Baughman** The Waterfront 9th Addition  
**LINE 1 & LINE 2**  
Sanitary Sewer Improvements

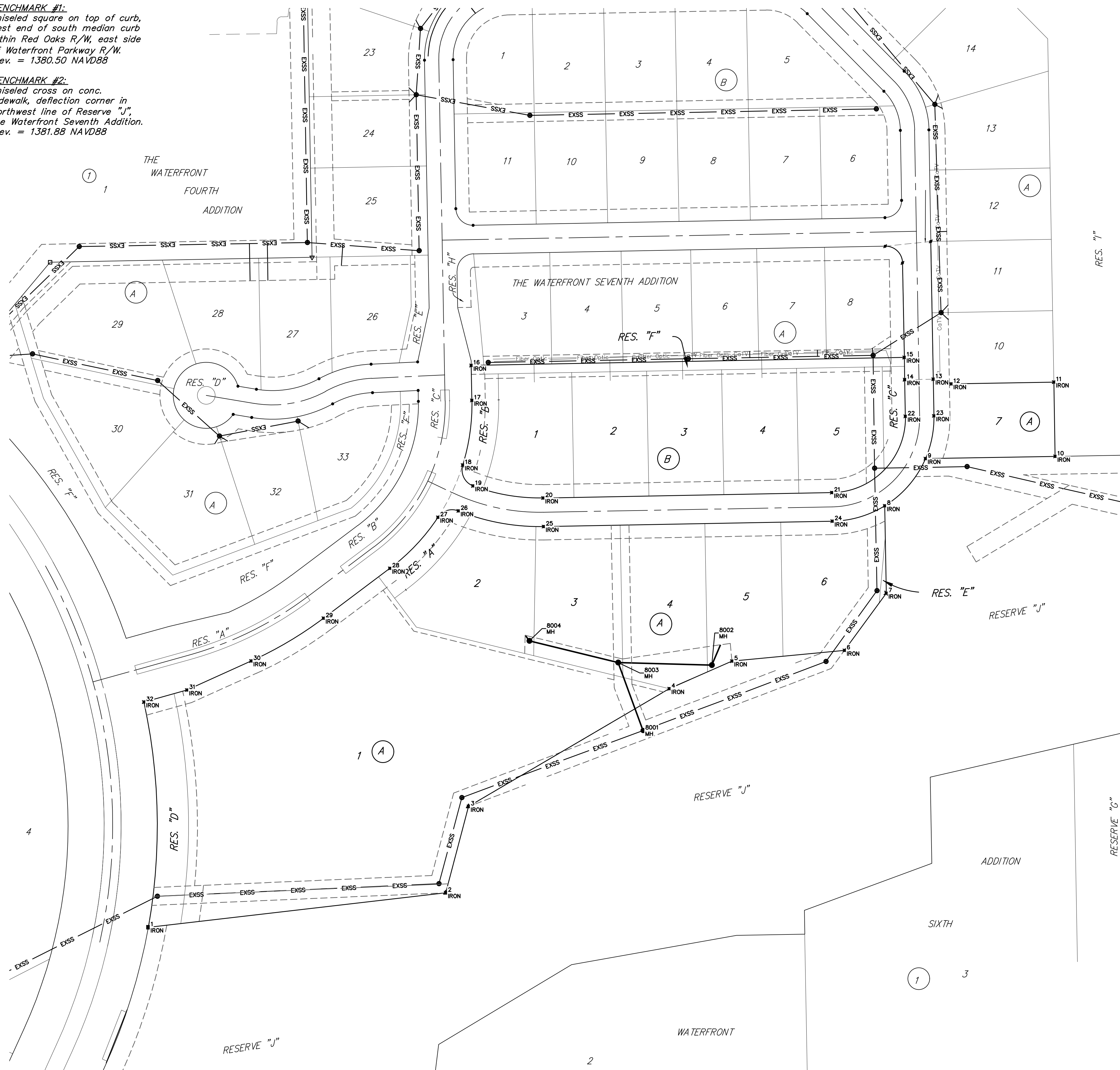
Baughman Company, P.A. 315 Ellis St. Wichita, KS 67211 P 316-262-7271 F 316-262-0149  
ENGINEERING | SURVEYING | PLANNING | LANDSCAPE ARCHITECTURE

PROJECT NUMBER 468-85191	DESIGN AEG	DRAWN JAK
REVISIONS:	APPROVED	DATE 4/04/17
	SCALE Noted	SHEET 2 OF 12

E:\Projects\Waterfront Ninth Addition\_16409-P223\Engineering\SS\_1612-E633\SS FLANS.dwg

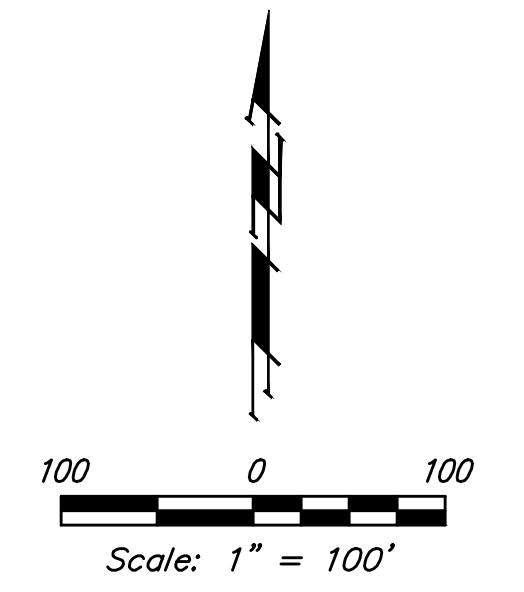
**BENCHMARK #1:**  
Chiseled square on top of curb,  
west end of south median curb  
within Red Oaks R/W, east side  
of Waterfront Parkway R/W.  
Elev. = 1380.50 NAVD88

**BENCHMARK #2:**  
Chiseled cross on conc.  
sidewalk, deflection corner in  
northwest line of Reserve "J".  
The Waterfront Seventh Addition.  
Elev. = 1381.88 NAVD88



CONTROL POINTS			
Point #	Northing	Easting	Description
1	4713.98	10008.72	IRON
2	4752.55	10341.95	IRON
3	4849.28	10367.55	IRON
4	4881.19	10592.52	IRON
5	5012.11	10662.80	IRON
6	5024.14	10788.89	IRON
7	5088.19	10835.69	IRON
8	5186.14	10833.98	IRON
9	5239.03	10879.69	IRON
10	5241.55	11024.99	IRON
11	5324.79	11023.52	IRON
12	5322.76	10908.51	IRON
13	5328.05	10888.41	IRON
14	5327.49	10856.42	IRON
15	5352.47	10855.98	IRON
16	5343.44	10370.61	IRON
17	5304.31	10371.34	IRON
18	5231.86	10361.04	IRON
19	5208.44	10372.50	IRON
20	5194.91	10451.08	IRON
21	5200.93	10774.72	IRON
22	5286.40	10857.14	IRON
23	5286.96	10889.14	IRON
24	5168.94	10775.31	IRON
25	5162.92	10451.67	IRON
26	5180.44	10356.23	IRON
27	5173.28	10333.30	IRON
28	5116.06	10279.41	IRON
29	5060.19	10204.95	IRON
30	5012.28	10123.92	IRON
31	4979.76	10051.94	IRON
32	4966.33	10003.77	IRON

SS POINTS			
Point #	Northing	Easting	Description
8001	4934.30	10563.14	MH
8002	5007.64	10640.21	MH
8003	5010.57	10535.29	MH
8004	5034.79	10435.85	MH



**Baughman** The Waterfront 9th Addition  
**COORDINATES**  
Sanitary Sewer Improvements

Baughman Company, P.A. 315 Ellis St. Wichita, KS 67211 P 316-262-7271 F 316-262-0149  
ENGINEERING | SURVEYING | PLANNING | LANDSCAPE ARCHITECTURE

PROJECT NUMBER 468-85191	DESIGN AEG	DRAWN JAK
REVISIONS:	APPROVED	DATE 4/04/17
	SCALE Noted	SHEET <b>11 OF 12</b>

I:\Projects\Waterfront Ninth Addition\_1609-P225\Engineering\SS\_16-12-E633\SS PLANS.dwg

