

# 37TH STREET NORTH DRAINAGE IMPROVEMENTS BETWEEN RIDGEPORT STREET & SIENA LAKES STREET

## CITY OF WICHITA, KANSAS

Gary Janzen, P.E. City Engineer  
Project Number 468-85203  
O.C.A. NO. 707120

### GENERAL NOTES:

- The Contractor shall comply with all applicable safety regulations. All construction shall be completed following current City Standard Specifications and Special Provisions.
- Contractor will be required to provide notice to utility companies a minimum of seventy-two (72) hours prior to any excavation, as follows:

Kansas One-Call 687-2470

The Contractor must notify the following in case of an emergency:

Cox Communications	260-7204
Kansas Gas Service	1-888-482-4950
Black Hills Energy	941-1628
Wester	383-8600
AT&T	1-800-288-8313
City of Wichita Water Department	262-6000
City of Wichita Sewer Maintenance	262-6000

- Utility service lines, poles, etc. are to be adjusted as necessary by others prior to construction unless the plans specifically call for their adjustment by the Contractor or unless the plans specifically identify a utility to be adjusted by its owner during construction. Existing utilities and their location, as shown on the plans, represent the best information obtainable for design. The Contractor will be required to work around existing utilities within the right-of-way which do not conflict with proposed construction.

- Rubble from the removal of miscellaneous structures and excess excavation which is to be wasted shall be disposed of on sites to be provided by the Contractor. These sites shall be approved by the Engineer as to suitability, appearance and site location. Locations, in the opinion of the Engineer, that will leave an unsightly appearance will not be approved. All disposal sites must be approved by the Kansas Department of Health and Environment. Material either stockpiled or disposed of in a flood plain will require a Kansas State Board of Agriculture permit. Any material dumped in waters of the United States or wetlands is subject to U.S. Corps. of Engineers permitting regulations. Any material buried or stockpiled beyond approved construction limits will require additional archaeological investigations unless buried in a previously approved borrow location.

- Trees and shrubs in public right-of-way which are in direct conflict with proposed new construction shall be removed by the Contractor with the Engineer's approval. Trees and shrubs which are not in direct conflict with proposed new construction shall be saved and protected from damage.

- The Contractor shall give all property owners and/or tenants of developed property abutting the construction of this project a minimum of ten (10) days notice prior to start of construction.

- The Contractor shall be responsible for preserving property irons. The Contractor will be required to re-establish any property irons which are damaged or destroyed by his construction operations. Such irons shall be re-established by a licensed land surveyor in accordance with state laws.

- If traffic will be impacted by construction, a traffic control plan must be submitted and approved by the City Traffic Engineer, Brian Coon at [traffic@wichita.gov](mailto:traffic@wichita.gov) before construction can begin. The Contractor shall be responsible for all traffic control measures to facilitate construction. All construction zone markings and signage shall conform to the latest version of the Manual on Uniform Traffic Control Devices (MUTCD) as published by the US Dept. of Transportation, Federal Highway Administration. All costs associated with construction markings and signage shall be the Contractors responsibility.

- All elevations shown are NAVD 88.

- All areas disturbed during construction that will not be under proposed pavement shall be restored to match existing conditions.

- The Contractor shall protect from damage and support existing utilities through constructions as approved by the utility owner and the Engineer at the contractors expense.

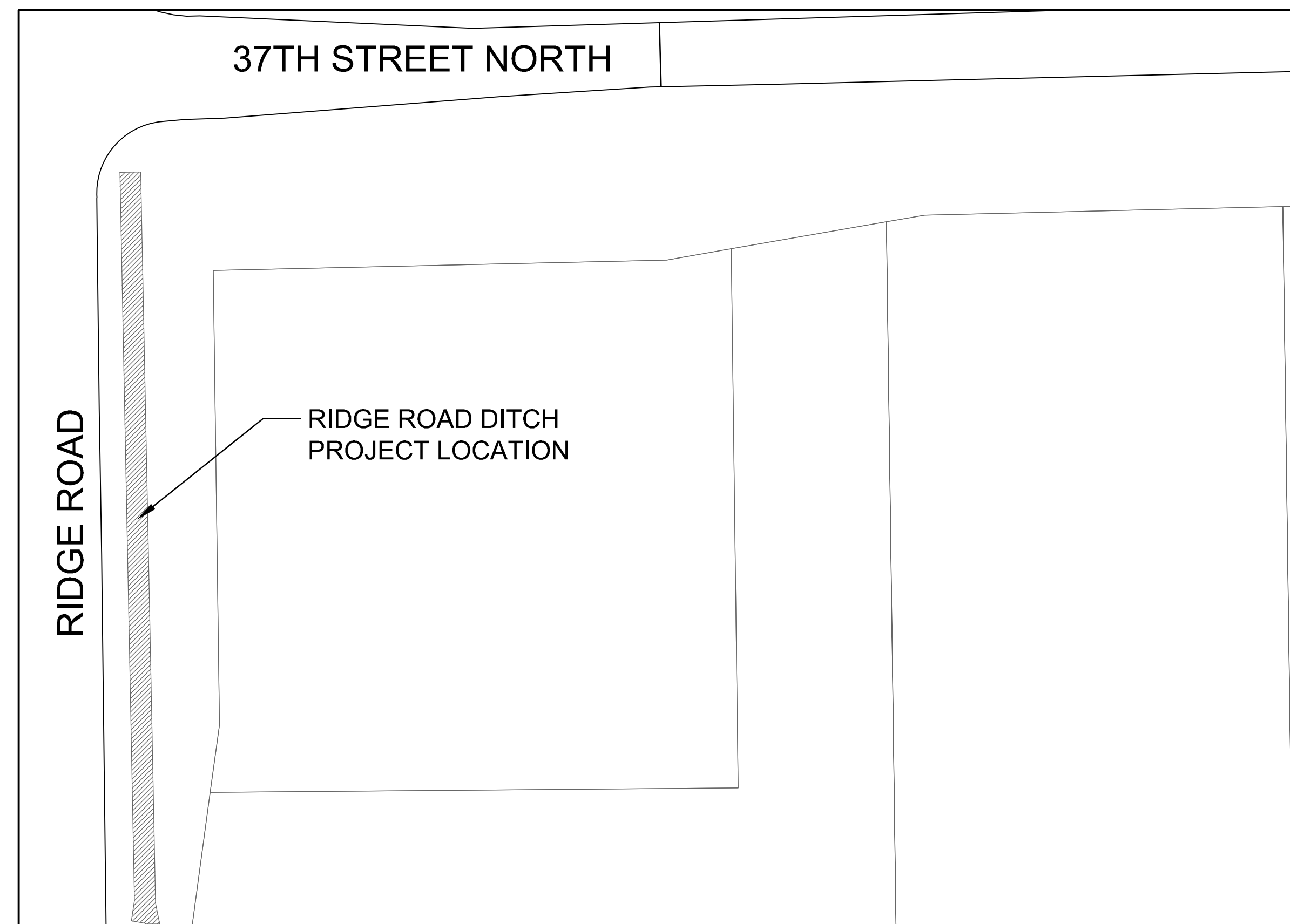
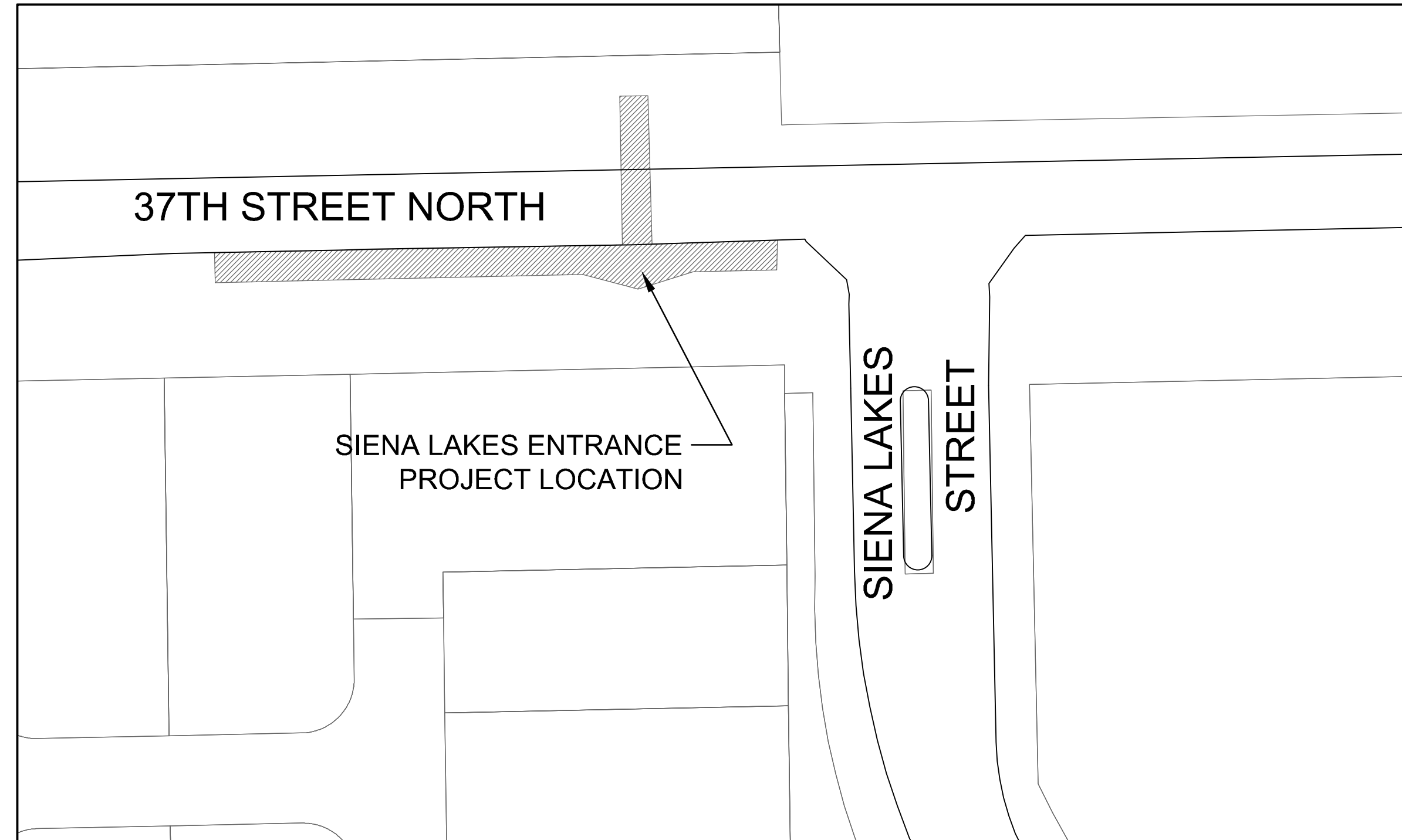
- Contractor shall limit the extent of trench openings overnight and weekends to less than 50 feet.

### Benchmarks

BENCHMARK #1:  
CHISELED SQUARE AT THE END OF THE TOP OF CURB AT THE SOUTHEAST CORNER OF RIDGE PORT AND 37TH ST. N., ELEVATION = 1333.05 (NAVD88)

BENCHMARK #2:  
RAILROAD SPIKE IN THE NORTH FACE OF THE 6TH POWER POLE WEST OF HOOVER, 2066' W. & 18' S. OF 37TH ST. N. AND HOOVER, ELEVATION = 1332.89 (NAVD88)

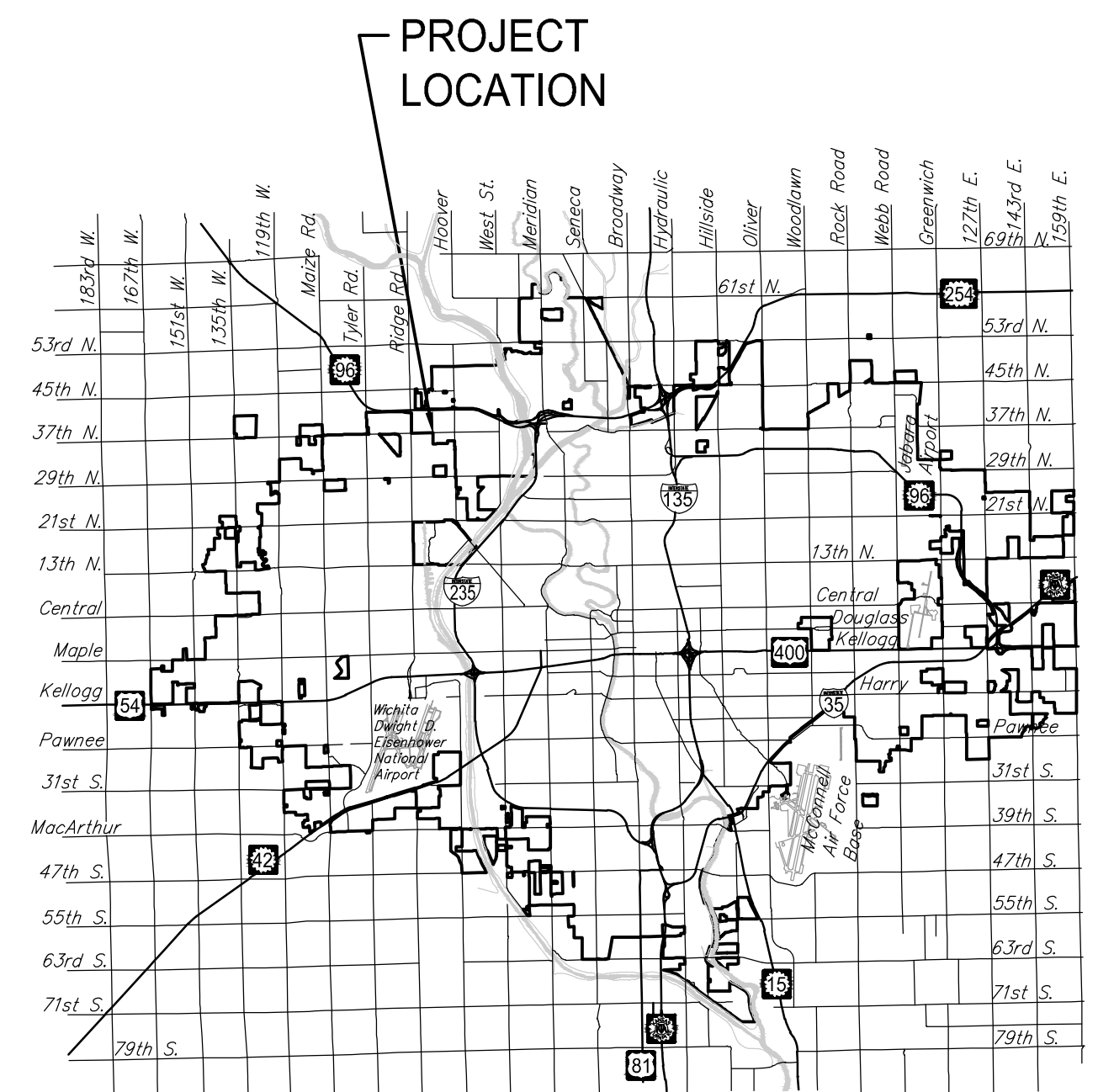
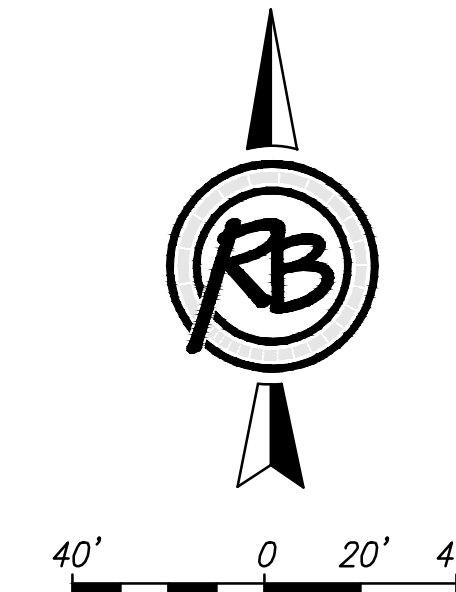
BENCHMARK #3:  
RAILROAD SPIKE IN THE NORTH FACE OF THE 4TH POWER POLE WEST OF HOOVER, ON THE WEST SIDE OF THE DRIVE ENTRANCE TO HOUSE #6007, 1494' W. & 20' S. OF 37TH ST. N. AND HOOVER, ELEVATION = 1334.74. (NAVD88)



McCullough - Contractor  
J. Brand - City of Wichita, Field Project Engineer  
T. Dvorak - City of Wichita, Inspector  
Completion Date: 8/28/2017

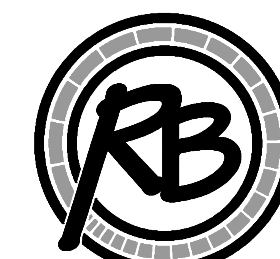
### Sheet Index

- TITLE SHEET
- SIENA LAKES ENTRANCE
- RIDGE ROAD DITCH
- PRE-CAST MANHOLE DETAIL
- REINFORCED CONCRETE MANHOLE DETAIL
- MANHOLE FRAME AND COVER DETAIL
- PAVEMENT REPLACEMENT DETAIL



Vicinity Map

April 2017



PLANS PREPARED BY  
**RUGGLES & BOHM**

ENGINEERING | SURVEYING | LANDSCAPE ARCHITECTURE | GOVERNMENT

924 NORTH MAIN WICHITA, KANSAS 67203 P (316) 264-8008 F (316) 264-4621  
WWW.RBKANSAS.COM 4854D