

# GENERAL NOTES

1. THE CONTRACTOR SHALL COMPLY WITH ALL APPLICABLE SAFETY REGULATIONS. ALL CONSTRUCTION SHALL BE COMPLETED FOLLOWING CURRENT CITY STANDARD SPECIFICATIONS AND SPECIAL PROVISIONS.
2. CONTRACTOR WILL BE REQUIRED TO PROVIDE NOTICE TO UTILITY COMPANIES A MINIMUM OF SEVENTY-TWO (72) HOURS PRIOR TO ANY EXCAVATION, AS FOLLOWS:

KANSAS ONE-CALL 687-2470

THE CONTRACTOR MUST NOTIFY THE FOLLOWING IN CASE OF AN EMERGENCY:

AT&T	1-800-246-8464
BLACK HILLS ENERGY	1-800-694-8989
CITY OF WICHITA WATER & SEWER	1-316-219-8921
CITY OF WICHITA STORMWATER	1-316-268-4090
CITY OF WICHITA TRAFFIC	1-316-268-4034
COX COMMUNICATIONS	1-888-249-3530
KANSAS GAS SERVICE	1-888-482-4950
WESTAR ENERGY	1-800-544-4857

3. UTILITY SERVICE LINES, POLES, ETC. ARE TO BE ADJUSTED AS NECESSARY BY OTHERS PRIOR TO CONSTRUCTION UNLESS THE PLANS SPECIFICALLY CALL FOR THEIR ADJUSTMENT BY THE CONTRACTOR OR UNLESS THE PLANS SPECIFICALLY IDENTIFY A UTILITY TO BE ADJUSTED BY ITS OWNER DURING CONSTRUCTION. EXISTING UTILITIES AND THEIR LOCATION, AS SHOWN ON THE PLANS, REPRESENT THE BEST INFORMATION OBTAINABLE FOR DESIGN. THE CONTRACTOR WILL BE REQUIRED TO WORK AROUND EXISTING UTILITIES WITHIN THE RIGHT-OF-WAY WHICH DO NOT CONFLICT WITH PROPOSED CONSTRUCTION.

4. RUBBLE FROM THE REMOVAL OF MISCELLANEOUS STRUCTURES AND EXCESS EXCAVATION WHICH IS TO BE WASTED SHALL BE DISPOSED OF ON SITES TO BE PROVIDED BY THE CONTRACTOR. THESE SITES SHALL BE APPROVED BY THE ENGINEER AS TO SUITABILITY, APPEARANCE AND SITE LOCATION. LOCATIONS, IN THE OPINION OF THE ENGINEER, THAT WILL LEAVE AN UNSIGHTLY APPEARANCE WILL NOT BE APPROVED. ALL DISPOSAL SITES MUST BE APPROVED BY THE KANSAS DEPARTMENT OF HEALTH AND ENVIRONMENT. MATERIAL EITHER STOCKPILED OR DISPOSED OF IN A FLOOD PLAIN WILL REQUIRE A KANSAS STATE BOARD OF AGRICULTURE PERMIT. ANY MATERIAL DUMPED IN WATERS OF THE UNITED STATES OR WETLANDS IS SUBJECT TO U.S. CORPS. OF ENGINEERS PERMITTING REGULATIONS. ANY MATERIAL BURIED OR STOCKPILED BEYOND APPROVED CONSTRUCTION LIMITS WILL REQUIRE ADDITIONAL ARCHAEOLOGICAL INVESTIGATIONS UNLESS BURIED IN A PREVIOUSLY APPROVED BORROW LOCATION.

5. TREES AND SHRUBS IN PUBLIC RIGHT-OF-WAY WHICH ARE IN DIRECT CONFLICT WITH PROPOSED NEW CONSTRUCTION SHALL BE REMOVED BY THE CONTRACTOR WITH THE CITY ENGINEER'S APPROVAL. TREES AND SHRUBS WHICH ARE NOT IN DIRECT CONFLICT WITH PROPOSED NEW CONSTRUCTION SHALL BE SAVED AND PROTECTED FROM DAMAGE.

6. THE CONTRACTOR SHALL GIVE ALL PROPERTY OWNERS AND/OR TENANTS OF DEVELOPED PROPERTY ADJUTING THE CONSTRUCTION OF THIS PROJECT A MINIMUM OF TEN (10) DAYS NOTICE PRIOR TO START OF CONSTRUCTION.

7. THE CONTRACTOR SHALL BE RESPONSIBLE FOR PRESERVING PROPERTY IRONS. THE CONTRACTOR WILL BE REQUIRED TO RE-ESTABLISH ANY PROPERTY IRONS WHICH ARE DAMAGED OR DESTROYED BY HIS CONSTRUCTION OPERATIONS. SUCH IRONS SHALL BE RE-ESTABLISHED BY A LICENSED LAND SURVEYOR IN ACCORDANCE WITH STATE LAWS.

8. THE ENGINEERING DIVISION SHALL FIELD LOCATE WATER VALVES ONE TIME DURING CONSTRUCTION WHEN REQUESTED BY THE CONTRACTOR. IT SHALL BE THE CONTRACTOR'S RESPONSIBILITY TO PRESERVE SUCH FIELD LOCATIONS DURING THE CONSTRUCTION PROCESS. WATER VALVES, VALVE BOXES OR FIRE HYDRANTS DAMAGED DURING CONSTRUCTION SHALL BE REPAIRED BY CONTRACTOR AT HIS OWN EXPENSE. VALVE BOXES AND WATER METERS WITHIN THE PROJECT LIMITS SHALL BE ADJUSTED TO MATCH FINAL GRADES BY THE CONTRACTOR.

9. THE CONTRACTOR SHALL NOTIFY THE CONSULTANT ENGINEER AND TOM MASON AT 316-268-4574 WITH THE CITY OF WICHITA WITH THE ANTICIPATED CONSTRUCTION START DATE AND NOTIFY THEM OF PROJECT COMPLETION. STAKING AND INSPECTION FOR THIS PROJECT WILL BE THE RESPONSIBILITY OF THE CONTRACTOR.

10. IF TRAFFIC WILL BE IMPACTED BY CONSTRUCTION, A TRAFFIC CONTROL PLAN MUST BE SUBMITTED AND APPROVED BY THE CITY TRAFFIC ENGINEER, BRIAN COON AT TRAFFIC@WICHITA.GOV BEFORE CONSTRUCTION CAN BEGIN. THE CONTRACTOR SHALL BE RESPONSIBLE FOR ALL TRAFFIC CONTROL MEASURES TO FACILITATE CONSTRUCTION. ALL CONSTRUCTION ZONE MARKINGS AND SIGNAGE SHALL CONFORM TO THE LATEST VERSION OF THE MANUAL ON UNIFORM TRAFFIC CONTROL DEVICES (MUTCD) AS PUBLISHED BY THE US DEPT. OF TRANSPORTATION, FEDERAL HIGHWAY ADMINISTRATION. ALL COSTS ASSOCIATED WITH CONSTRUCTION MARKINGS AND SIGNAGE SHALL BE THE CONTRACTORS RESPONSIBILITY.

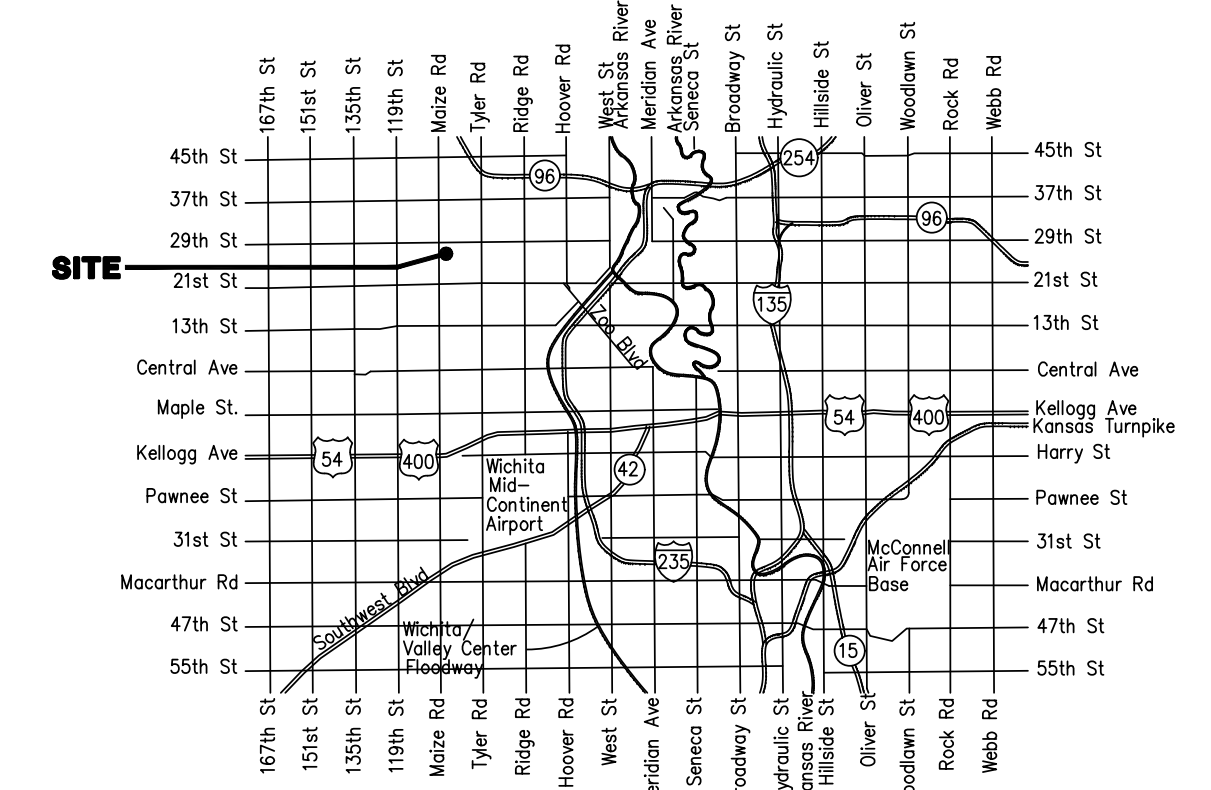
11. ALL ELEVATIONS SHOWN ARE NAVD 88.

12. ALL AREAS DISTURBED DURING CONSTRUCTION THAT WILL NOT BE UNDER PROPOSED PAVEMENT SHALL BE RESTORED TO MATCH EXISTING CONDITIONS.

**Kansas Paving - Contractor**  
**J. Brand - City of Wichita, Field Project Engineer**  
**T. Dvorak - City of Wichita, Inspector**  
**As-built**  
**Completion Date: 11/8/2017**

# PAVING IMPROVEMENTS to serve **CADILLAC LAKE** LOTS 1 THRU 4, BLOCK 1, CADILLAC LAKE LOTS 8, BLOCK 1, CADILLAC LAKE CITY OF WICHITA, KANSAS

Gary Janzen, P.E. City Engineer  
 Project Number 472-85237  
 OCA NO. 766387



## Vicinity Map

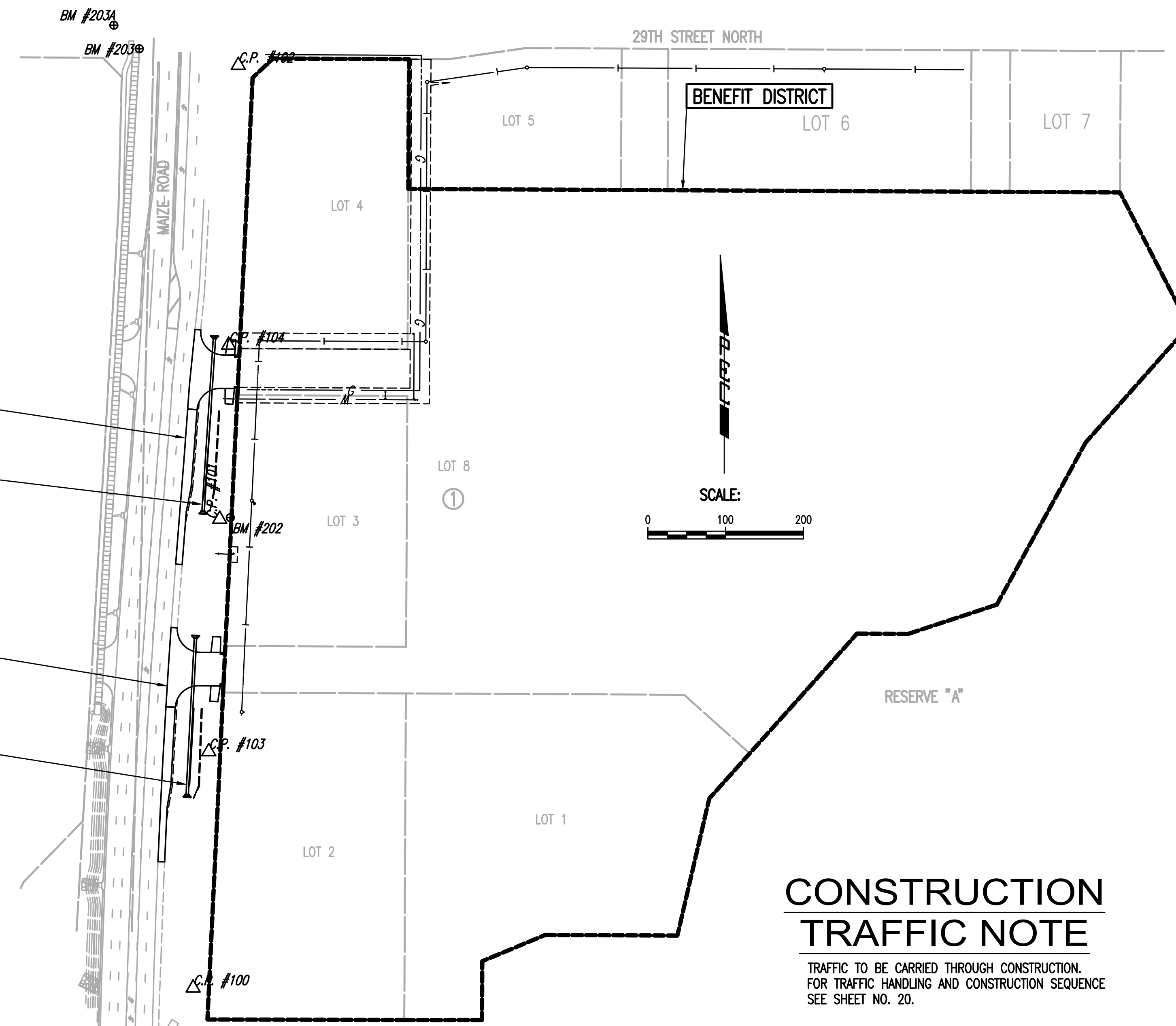
## EARTHWORK

EXCAVATION 290 CU. YDS.  
 COMPACTED FILL 818 CU. YDS.

PROJECT LENGTH= 687 L.F.

ESTIMATED BORROW MATERIAL REQUIRED  
 (818/0.85) - 290 = 672 C.Y.  
 VMF = 0.85 (ASSUMED)

EARTHWORK TOTALS SHOWN ABOVE ARE APPROXIMATE.  
 CONTRACTOR MUST SATISFY THEMSELVES WITH EARTHWORK  
 BALANCING PRIOR TO BID.



## BENCHMARKS

- BM #201A - CHISELED SQUARE ON TOP OF CURB, NORTH SIDE OF DRIVE ENTRANCE TO NORTHEAST CORNER OF TARGET PARKING LOT AND SOUTHWEST OF SOUTHWEST CORNER OF GOVERNMENT LOT 4, SEC 5-27-1W. ELEV.=1352.79 (NAVD88)
- BM #202 - CHISELED "X" ON NORTH RIM OF TELEPHONE MANHOLE AT PVC TELEPHONE MARKER POST, 35 FEET SOUTH OF POWER POLE #62115, ON EAST SIDE OF ASPHALT BIKE PATH ON EAST SIDE OF MAIZE ROAD, 4 POLES NORTH OF TARGET, 3 POLES SOUTH OF 29TH STREET NORTH. ELEV.= 1350.53 (NAVD88)
- BM #203 - CHISELED SQUARE AT SOUTHEAST CORNER OF SOUTH HEADWALL FOR RCBC UNDER 29TH STREET, WEST OF MAIZE ROAD (NOT THE CHISELED + AT THE SOUTHWEST CORNER OF SAME HEADWALL). ELEV.= 1353.32 (NAVD88)
- BM #203A - CHISELED SQUARE ON TOP OF CURB INLET WEST SOUTHWEST OF 29TH STREET AND MAIZE ROAD (DOES NOT INCLUDE ROUND PLASTIC DISK GLUED OVER PART OF SQUARE). ELEV.= 1351.98 (NAVD88)

## SHEET INDEX

1. TITLE SHEET
2. TYPICAL SECTIONS
3. PLAT (CADILLAC LAKE)
4. PAVING PLAN-SOUTH ENTRANCE
5. PAVING PLAN-NORTH ENTRANCE
6. GEOMETRY PLAN-SOUTH ENTRANCE
7. GEOMETRY PLAN-NORTH ENTRANCE
8. CURB AND GUTTER DETAILS
9. PAVEMENT JOINTING DETAILS
10. GRADING PLAN-ENTRANCES
11. SWS LINE NO. 1-SOUTH ENTRANCE
12. SWS LINE NO. 2-NORTH ENTRANCE
13. HEADWALL DETAILS
14. EROSION CONTROL PLAN
- 15-19. EROSION CONTROL DETAILS
20. TRAFFIC HANDLING AND CONSTRUCTION SEQUENCE
- 21-24. TRAFFIC CONTROL DETAILS
- 25-28. CROSS SECTIONS

## DEVELOPER CONTACT

MR. DAVID HAMBRICK  
 CADILLAC LAKE, L.L.C.  
 727 N. WACO, SUITE 400  
 WICHITA, KANSAS 67203  
 (316) 263-3201

## HORIZONTAL CONTROL POINTS

- Pt. No. 100 MON. PKN  $\Delta$ C.P. #100  
 N: 8,994.2040, E: 5,177.5870
- Pt. No. 101 PKN  
 N: 9,597.4580, E: 5,211.7520
- Pt. No. 102 PKN  
 N: 10,181.5580, E: 5,235.6590
- Pt. No. 103 PKN  
 N: 9,298.2310, E: 5,197.6390
- Pt. No. 104 PKN  
 N: 9,821.4260, E: 5,223.2540

## CONSTRUCTION TRAFFIC NOTE

TRAFFIC TO BE CARRIED THROUGH CONSTRUCTION.  
 FOR TRAFFIC HANDLING AND CONSTRUCTION SEQUENCE  
 SEE SHEET NO. 20.

