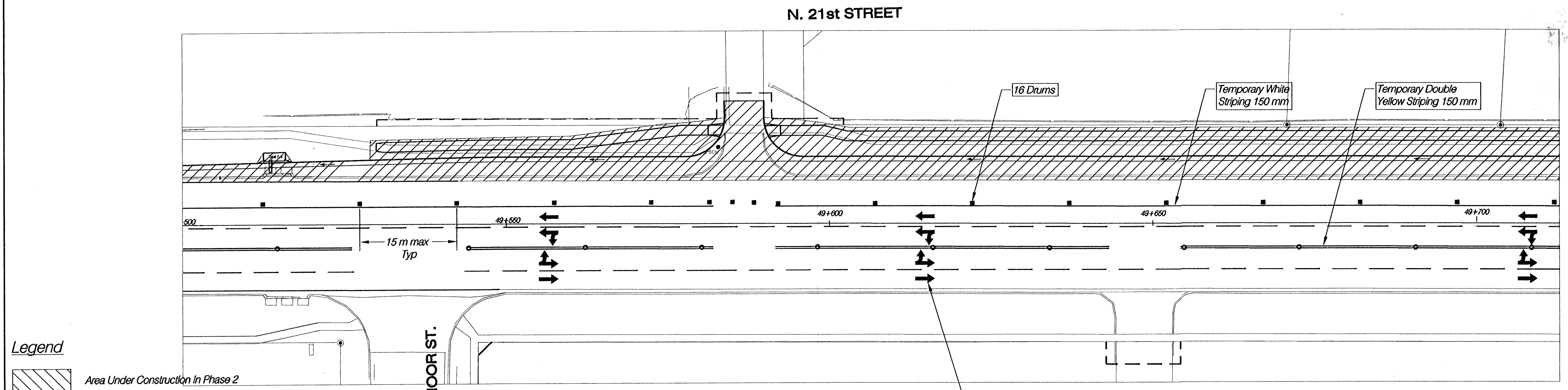
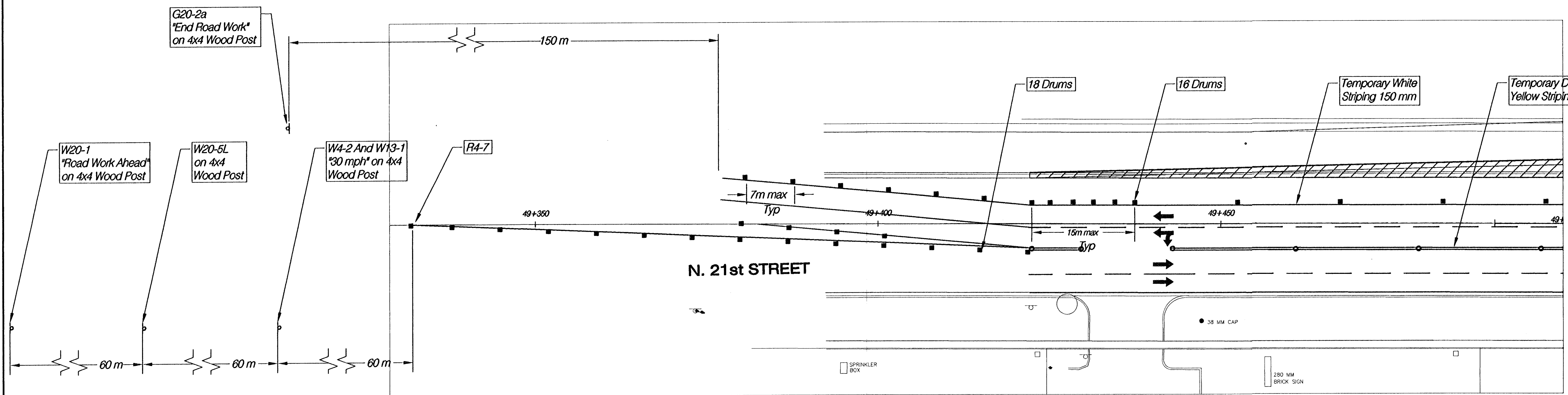


FHWA REG. NO.	STATE	PROJECT NO.	YEAR	SHEET NO.	TOTAL SHEETS
7	KANSAS	87 N-0199-01	2002	49	158
FED. AID NO. CMQ-NO19(901)					



- Legend**
- Area Under Construction In Phase 2
N. ROCK ROAD Sta. 0+884.067 to Sta. 1+086.539
N. 21st STREET Sta. 49+422 to Sta. 50+199.864
 - Area Previously Constructed (Phase 1)
 - Type III Barricade
 - Channelizing Device (Drum)
 - Tubular Marker

Pavement Markings Are For Information Purposes Only And Are Not To Be Installed

N. 21st STREET
TRAFFIC CONTROL PLAN - PHASE 2
STA. 49+350 - 49+700

HWS Consulting Group Inc.
 Omaha Office
 10844 Old Mill Rd., Ste 1
 Omaha, NE 68154
 Phone: (402) 333-5792
 Fax: (402) 333-2248

Designed By: BME	Checked By: RJK
Drawn By: HJS	Date: 03-25-2002 Job No. 55-70-2003