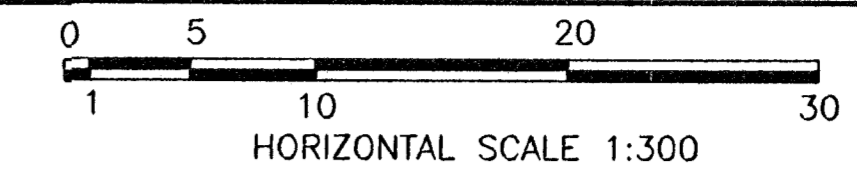
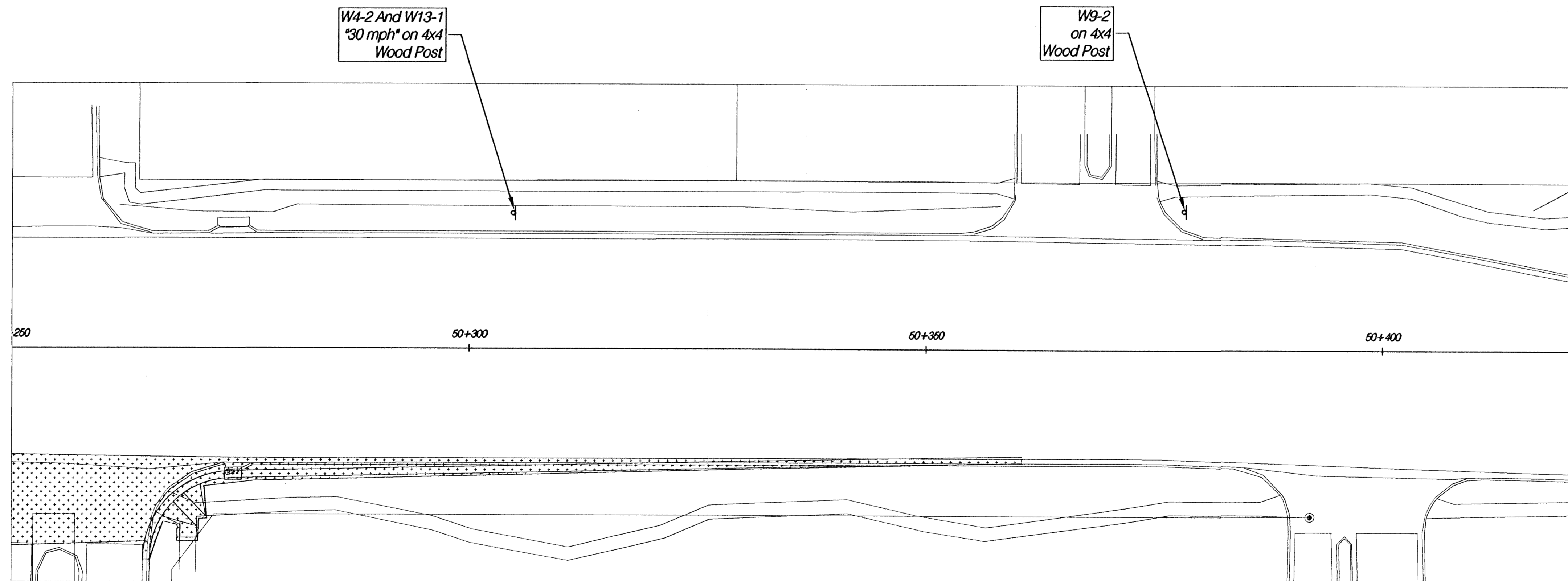
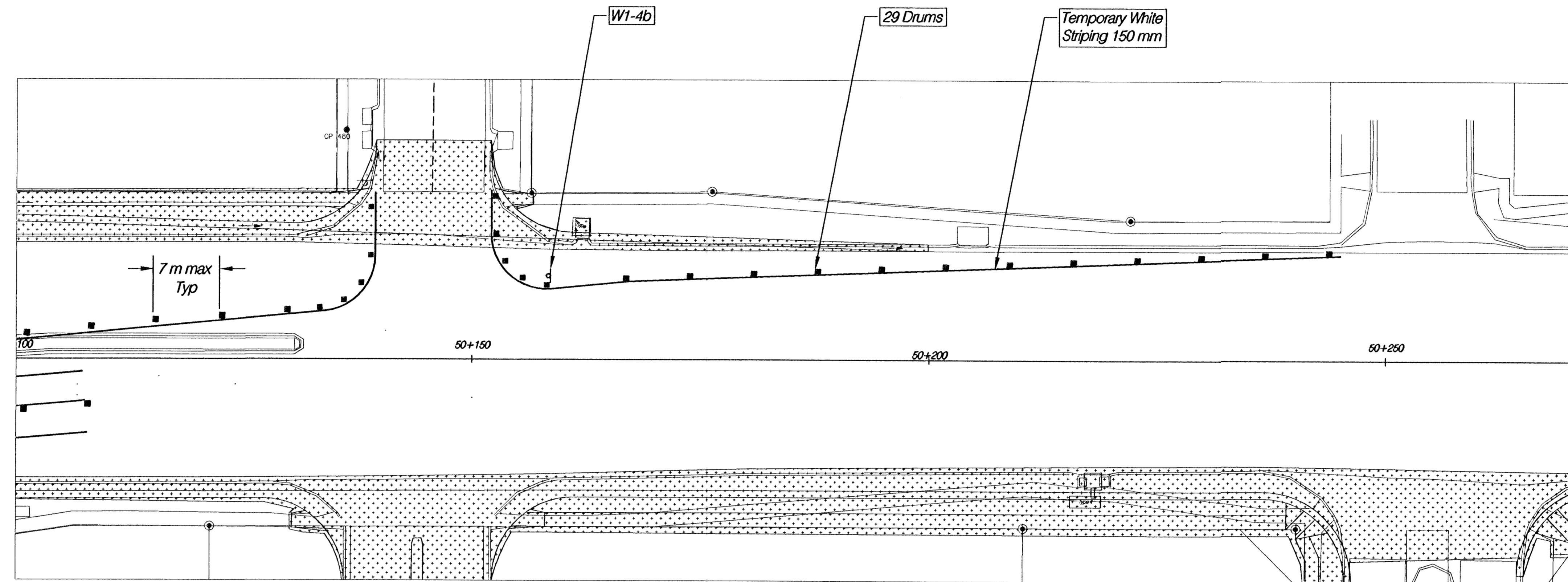


P:\PROJECTS\2002\20020325\20020325101\20020325101.dwg



FHWA REG NO.	STATE	PROJECT NO.	YEAR	SHEET NO.	TOTAL SHEETS
7	KANSAS	87 N-0199-01	2002	70	158

FED. AID NO. CMQ-NO19(901)



Legend

- Area Under Construction In Phase 7
Northeast 1/4 of N. 21st STREET and N. ROCK ROAD.
- Area Previously Constructed (Phases 1,2,3,4,5 & 6)
- Type III Barricade
- Channelizing Device (Drum)
- Tubular Marker

N. 21st STREET
TRAFFIC CONTROL PLAN - PHASE 7
STA. 50+100 - 50+400

HWS Consulting Group Inc. Omaha Office
10844 Old Mill Rd., Ste 1
Omaha, NE 68154
Phone: (402) 333-5792
Fax: (402) 333-2248

Designed By: BWE	Checked By: RJK
Drawn By: HS	Date: 03-25-2002 Job No. 55-70-2003