

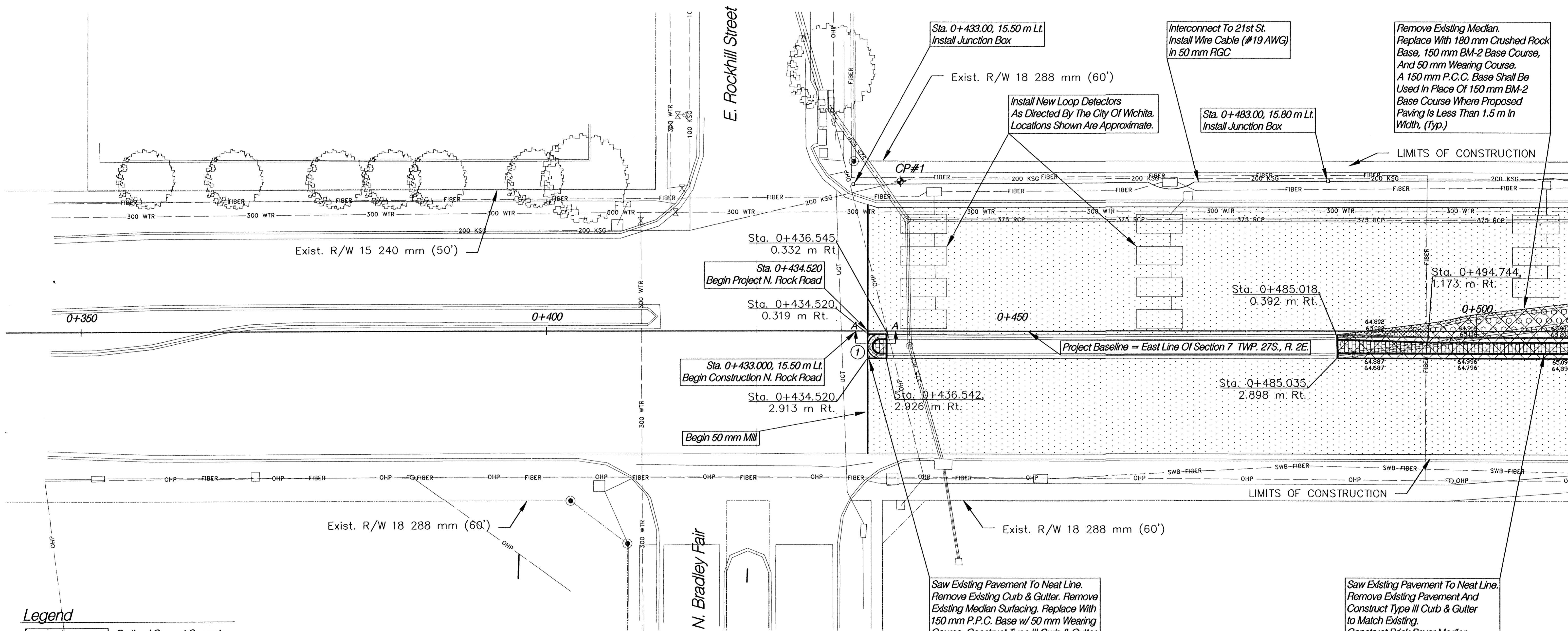
FHWA REG NO.	STATE	PROJECT NO.	YEAR	SHEET NO.	TOTAL SHEETS
7	KANSAS	87 N-0199-01	2002	78	158

FED. AID NO. - CMQ-NO19(901)

Control Point Information

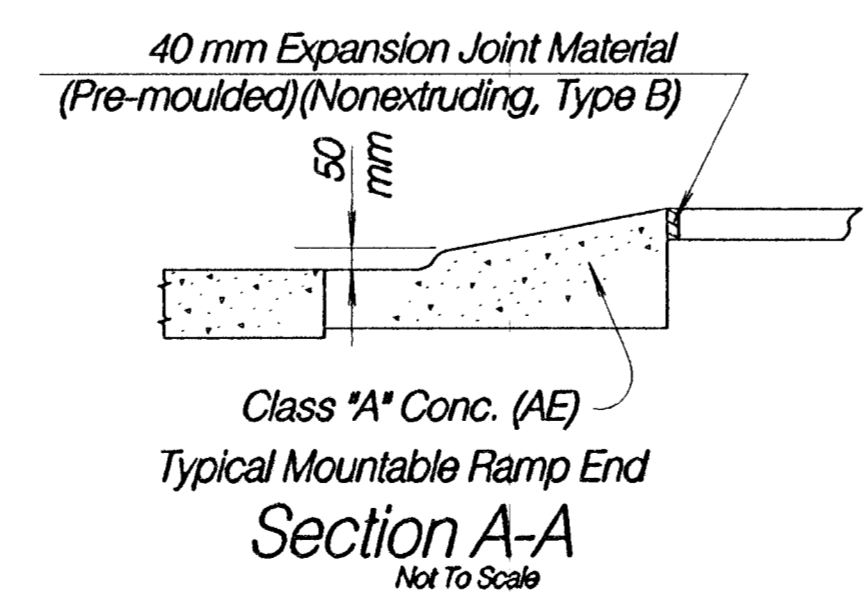
CP#1
 Sta. 0+438.002, 16.068 m Lt.
 North 15090.573
 East 11983.854

N. ROCK ROAD



Legend

- Portland Cement Concrete
- Brick Paver Median Surfacing
- Pavement Milling w/ Asphalt Wearing Course
- Full Depth Asphalt Pavement
- Brick Paver Crosswalk
- Concrete Base w/ Asphalt Wearing Course
- Pavement Removal
- Control Point
- Existing Property Pin (Found)
- Water Flow
- Construction Easement
- Permanent Easement
- Proposed Right Of Way
- Existing Right Of Way
- Geometrics, See Sheet 92 For Data



Saw Existing Pavement To Neat Line. Remove Existing Curb & Gutter. Remove Existing Median Surfacing. Replace With 150 mm P.C.C. Base w/ 50 mm Wearing Course. Construct Type III Curb & Gutter With Mountable Ramp End. Construct Brick Paver Median Surfacing.

Saw Existing Pavement To Neat Line. Remove Existing Pavement And Construct Type III Curb & Gutter to Match Existing. Construct Brick Paver Median Surfacing.

Note: Elevations Are At Even 10 m Stations Unless Otherwise Noted.

N. ROCK ROAD PLAN
STA. 0+350 - 0+500

HWS Consulting Group Inc. Omaha Office
 10814 Old Mill Rd., Ste 1
 Omaha, NE 68154
 Phone: (402) 333-5792
 Fax: (402) 333-2248

Designed By: BWE Checked By: RJK
 Drawn By: HJS Date: 03-25-2002 Job No. 55-70-2003

See Sheets 20 To 43 For Construction Phasing