

BENCHMARKS:

BM #1: "□" Cut in face of curb inlet near SE corner of Lot 30, Block C, Gray's 5th Add. Elev. = 1297.86 NAVD88

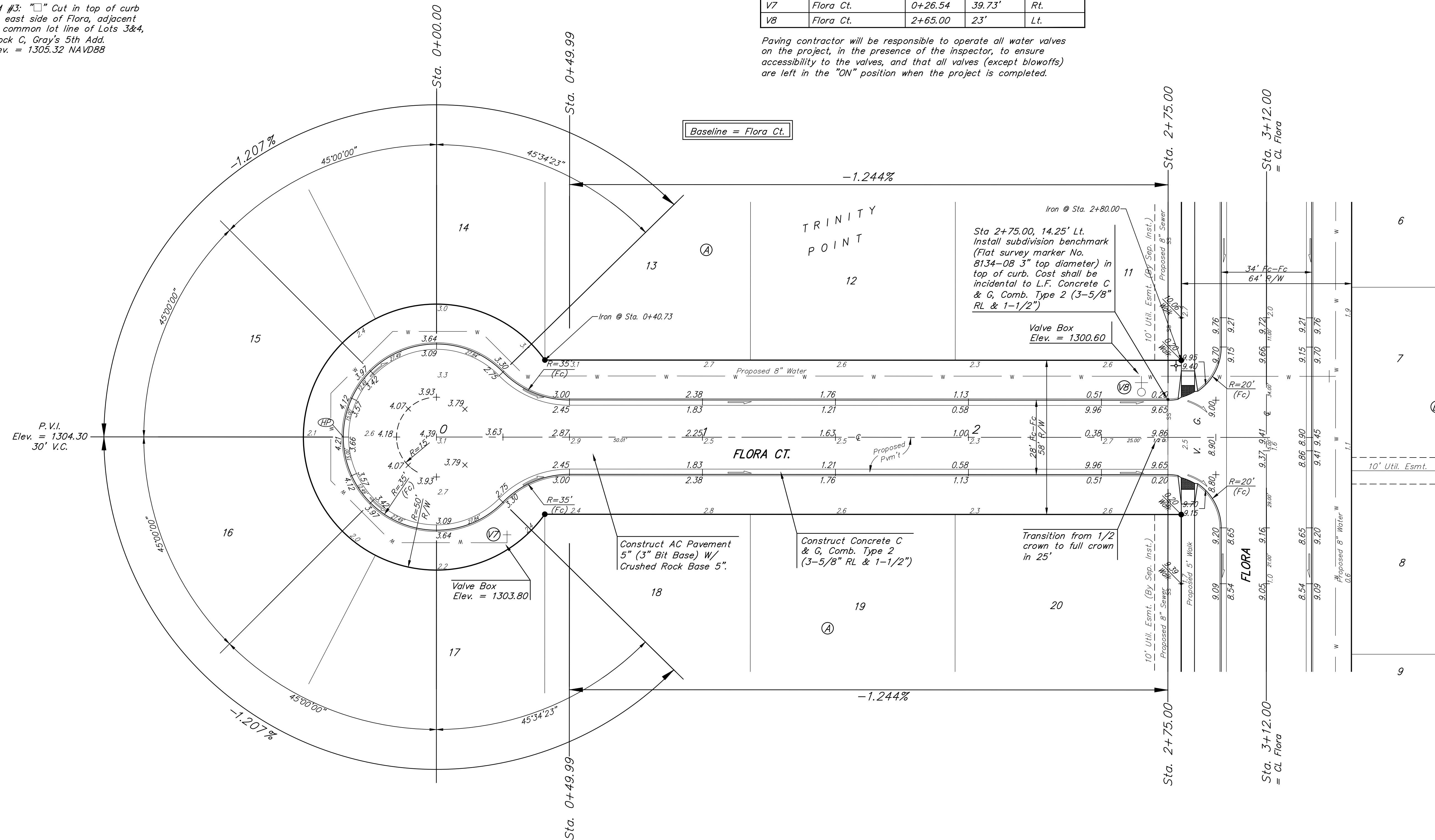
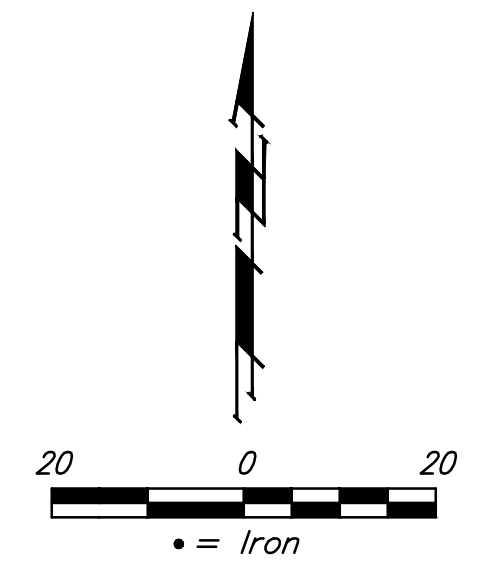
BM #2: "□" Cut in top of curb on east side of Flora, ±10' north of south property line of Gray's 5th Add. Elev. = 1302.40 NAVD88

BM #3: "□" Cut in top of curb on east side of Flora, adjacent to common lot line of Lots 3&4, Block C, Gray's 5th Add. Elev. = 1305.32 NAVD88

WATER VALVE LOCATION TABLE

VALVE NUMBER	STREET	BASELINE STATION	OFFSET DISTANCE	OFFSET DIRECTION
V7	Flora Ct.	0+26.54	39.73'	Rt.
V8	Flora Ct.	2+65.00	23'	Lt.

Paving contractor will be responsible to operate all water valves on the project, in the presence of the inspector, to ensure accessibility to the valves, and that all valves (except blowoffs) are left in the "ON" position when the project is completed.



Subdivision Bench Marks

Street & Station	Location Description	Elevation
Flora Ct. 2+75.00, 14.25' Lt.	Adjacent to Fire Hydrant at W. End of N. Curb Return of Flora & Flora Ct. (Lots 11 through 20, Block A)	

NOTE: ROLL TYPE CURB & GUTTER (TYPE 2) TO BE CONSTRUCTED ON THE PAVEMENT SHOWN ON THIS SHEET. TOP OF CURB ELEVATIONS ARE GIVEN FOR FULL HEIGHT CURB (TYPE 4).