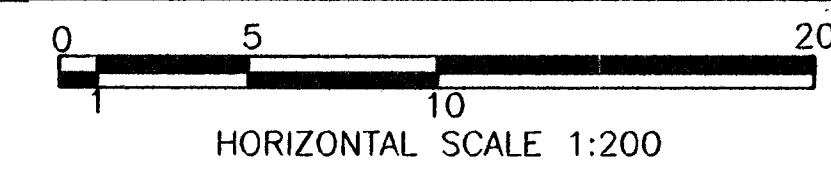


Control Point Information

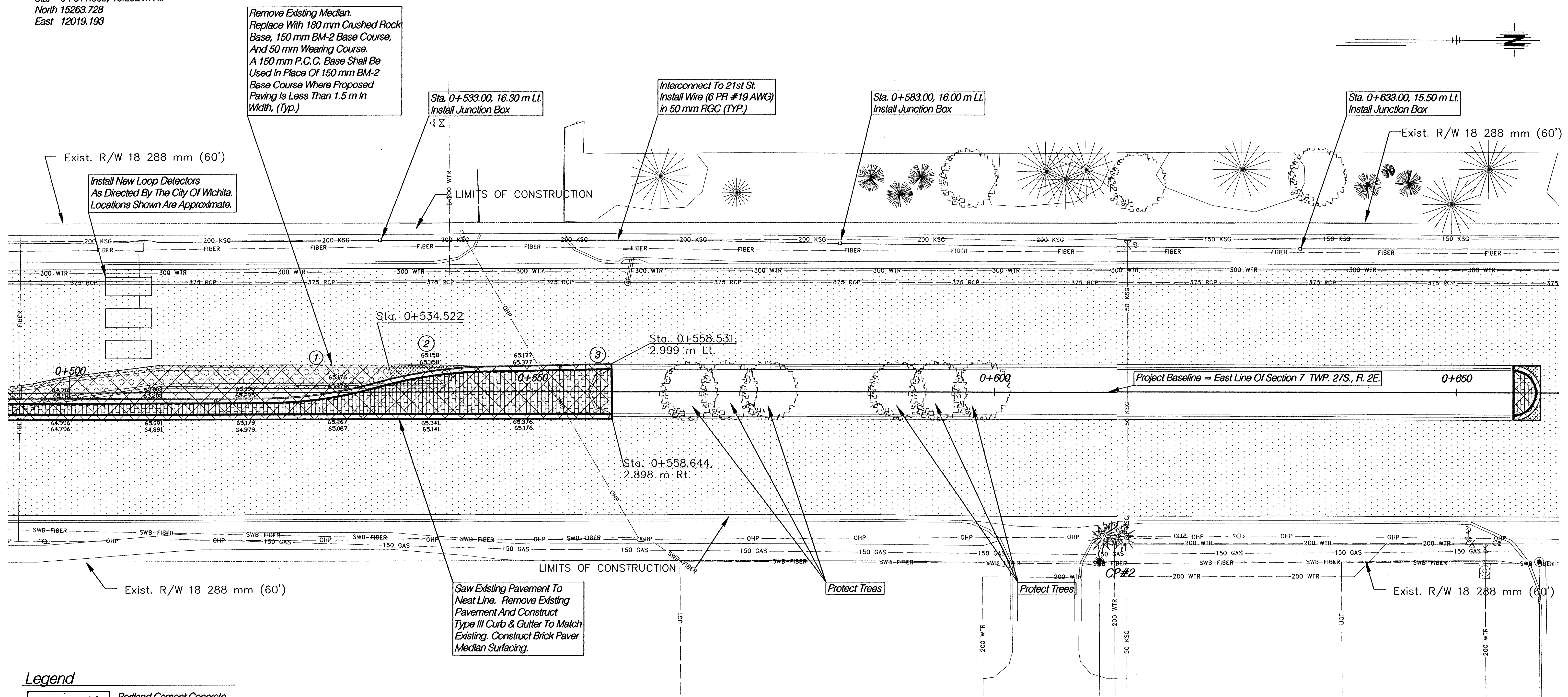
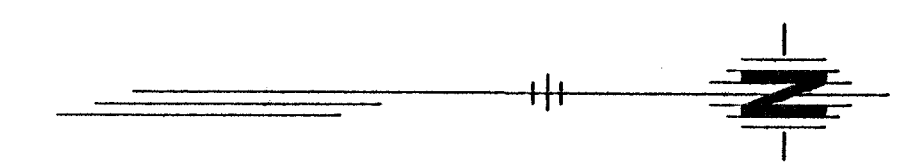
CP#2
 Sta. 0+611.362, 18,262 m Ft.
 North 15263.728
 East 12019.193

N. ROCK ROAD



FHWA REG. NO.	STATE	PROJECT NO.	YEAR	SHEET NO.	TOTAL SHEETS
7	KANSAS	87 N-0199-01	2002	79	158

FED. AID NO. - CMQ-N019(901)



Legend

- Portland Cement Concrete
- Brick Paver Median Surfacing
- Pavement Milling w/ Asphalt Wearing Course
- Full Depth Asphalt Pavement
- Brick Paver Crosswalk
- Concrete Base w/ Asphalt Wearing Course
- Pavement Removal
- Control Point
- Existing Property Pin (Found)
- Water Flow
- Construction Easement
- Permanent Easement
- Proposed Right Of Way
- Existing Right Of Way
- Geometrics, See Sheet 92 For Data

Note: Elevations Are At Even 10 m Stations Unless Otherwise Noted.

N. ROCK ROAD
PLAN
STA. 0+500 - 0+650

HWS Consulting Group Inc. Omaha Office
10844 Old Mill Rd., Ste. 1
Omaha, NE 68154
Phone: (402) 333-5792
Fax: (402) 333-2248

Designed By: BWE	Checked By: RJK
Drawn By: HS	Date: _____
Job No. 55-70-2003	

See Sheets 20 To 43 For Construction Phasing