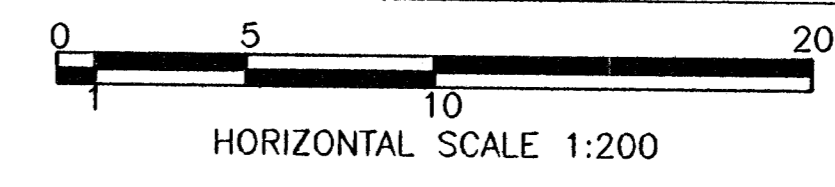


Control Point Information

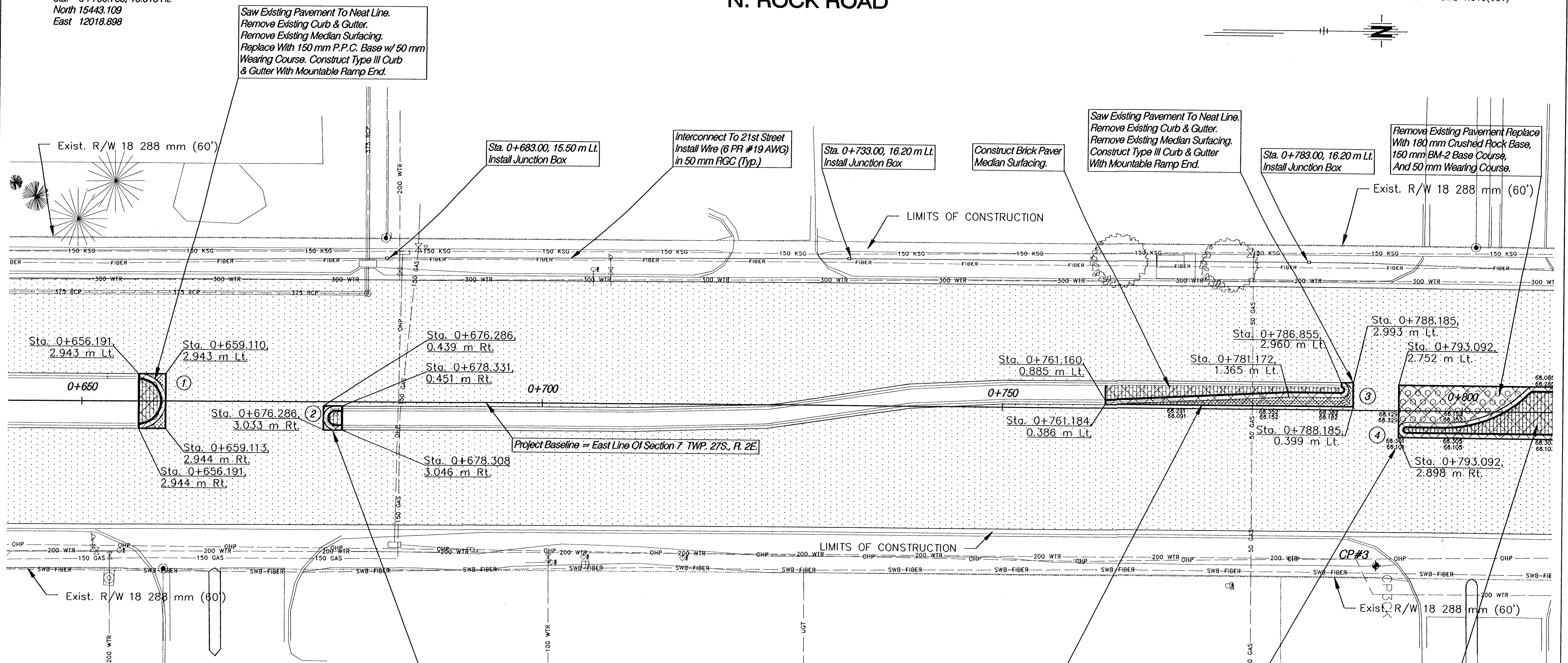
CP#3
 Sta. 0+790.738, 16.913 Ft.
 North 15443.109
 East 12018.898

N. ROCK ROAD



FHWA REG. NO.	STATE	PROJECT NO.	YEAR	SHEET NO.	TOTAL SHEETS
7	KANSAS	87 N-0199-01	2002	80	158

FED. AID NO. - CMQ-NO19(901)



Legend

- Portland Cement Concrete
- Brick Paver Median Surfacing
- Pavement Milling w/ Asphalt Wearing Course
- Full Depth Asphalt Pavement
- Brick Paver Crosswalk
- Concrete Base w/ Asphalt Wearing Course
- Pavement Removal
- Control Point
- Existing Property Pin (Found)
- Water Flow
- Construction Easement
- Permanent Easement
- Proposed Right Of Way
- Existing Right Of Way
- Geometrics, See Sheet 92 For Data

Saw Existing Pavement To Neat Line.
 Remove Existing Curb & Gutter.
 Remove Existing Median Surfacing.
 Replace With 150 mm P.P.C. Base w/ 50 mm
 Wearing Course. Construct Type III Curb
 & Gutter With Mountable Ramp End.
 Construct Brick Paver Median Surfacing.

A 150 mm P.C.C. Base Shall Be
 Used In Place Of 150 mm BM-2
 Base Course Where Proposed
 Paving Width Is Less Than 1.5 m
 In Width (Typ.)

Saw Existing Pavement To Neat Line.
 Remove Existing Curb & Gutter.
 Remove Existing Pavement And
 Construct Type III Curb
 & Gutter With Mountable Ramp End.

Construct Brick Paver
 Median Surfacing.

Note: Elevations Are At Even 10 m
 Stations Unless Otherwise Noted.

**N. ROCK ROAD
 PLAN
 STA. 0+650 - 0+800**

HWS Consulting Group Inc. Omaha Office
 10844 Old Mill Rd., Ste. 1
 Omaha, NE 68154
 Phone: (402) 333-5792
 Fax: (402) 333-2248

Designed By: BWE Checked By: RLK
 Drawn By: HHS Date: 03-25-2002 Job No. 55-70-2003

See Sheets 20 To 43 For Construction Phasing