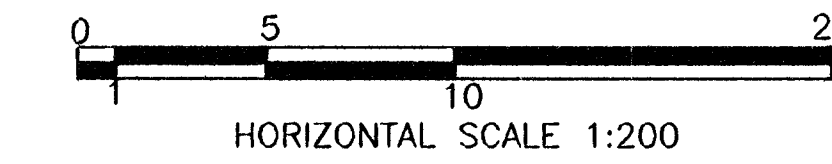


Control Point Information

CP#6  
 Sta. 49+582.796, 11.841 m Lt.  
 North 15665.002  
 East 11586.033



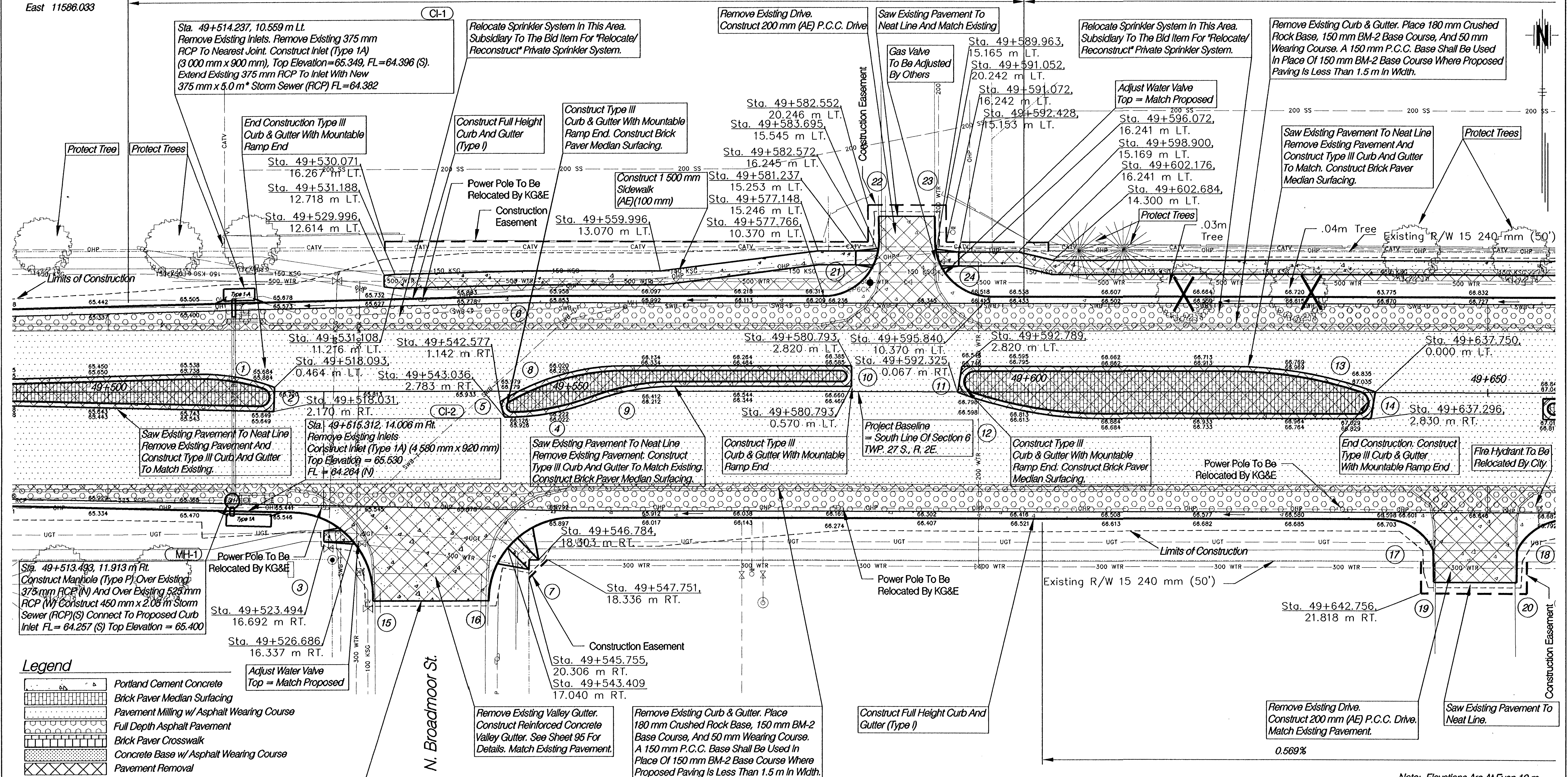
FHWA REG. NO.	STATE	PROJECT NO.	YEAR	SHEET NO.	TOTAL SHEETS
7	KANSAS	87 N-0199-01	2002	84	158

FED. AID NO. - CMQ-N019(901)

N. 21st STREET

1.084%

0.588%



- Legend**
- Portland Cement Concrete
  - Brick Paver Median Surfacing
  - Pavement Milling w/ Asphalt Wearing Course
  - Full Depth Asphalt Pavement
  - Brick Paver Crosswalk
  - Concrete Base w/ Asphalt Wearing Course
  - Pavement Removal
  - Control Point
  - Existing Property Pin (Found)
  - Water Flow
  - Construction Easement
  - Permanent Easement
  - Proposed Right Of Way
  - Existing Right Of Way
  - Geometrics, See Sheet 93 For Data

Note: Elevations Are At Even 10 m Stations Unless Otherwise Noted.

**N. 21st STREET PLAN**  
 STA. 49+500 - 49+650

**HWS** Consulting Group Inc.  
 10844 Old Mill Rd., Ste 1  
 Omaha, NE 68154  
 Phone: (402) 333-5792  
 Fax: (402) 333-2248

Designed By: EWE  
 Checked By: RJK  
 Drawn By: HJS  
 Date: 03-25-2002 Job No. 55-70-2003

\* Pipe Length Is Approximate. Existing Pipe Shall Be Removed To Nearest Joint And Extended With New RCP To Inlet

See Sheets 20 To 43 For Construction Phasing