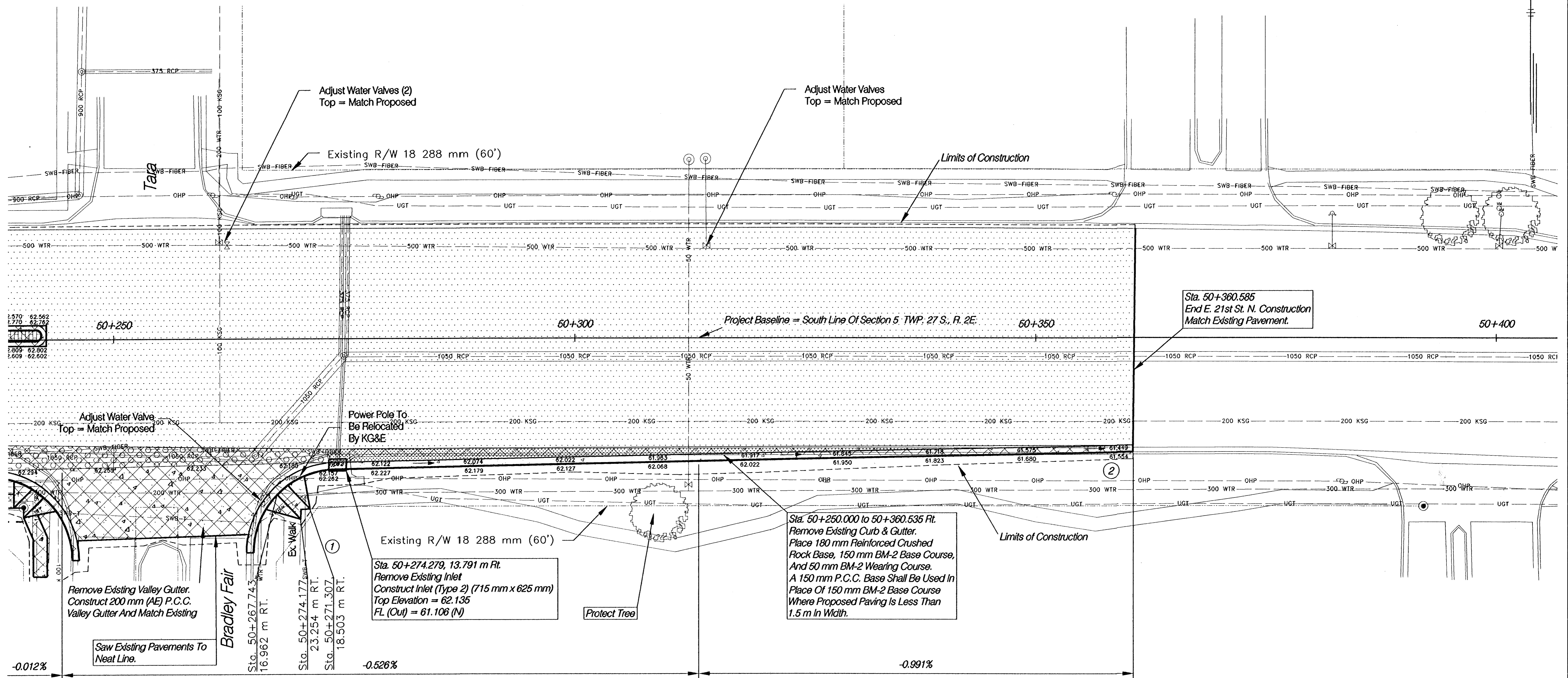
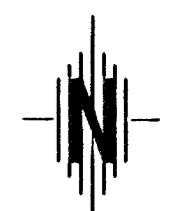


FHWA REG NO.	STATE	PROJECT NO.	YEAR	SHEET NO.	TOTAL SHEETS
7	KANSAS	87 N-0199-01	2002	89	158

FED. AID NO. - CMQ-NO19(901)

N. 21st STREET



Legend

- Portland Cement Concrete
- Brick Paver Median Surfacing
- Pavement Milling w/ Asphalt Wearing Course
- Full Depth Asphalt Pavement
- Brick Paver Crosswalk
- Concrete Base w/ Asphalt Wearing Course
- Pavement Removal
- Control Point
- Existing Property Pin (Found)
- Water Flow
- Construction Easement
- Permanent Easement
- Proposed Right Of Way
- Existing Right Of Way
- Geometrics, See Sheet 93 For Data

Note: Elevations Are At Even 10 m Stations Unless Otherwise Noted.

**N. 21st STREET
PLAN
STA. 50+250 - 50+400**

HWS Consulting Group Inc. Omaha Office
10844 Old Mill Rd., Ste 1
Omaha, NE 68154
Phone: (402) 333-5792
Fax: (402) 333-2248

Designed By: BWE	Checked By: RUK
Drawn By: HJS	Date: 03-25-2002 Job No. 55-70-2003

See Sheets 20 To 43 For Construction Phasing