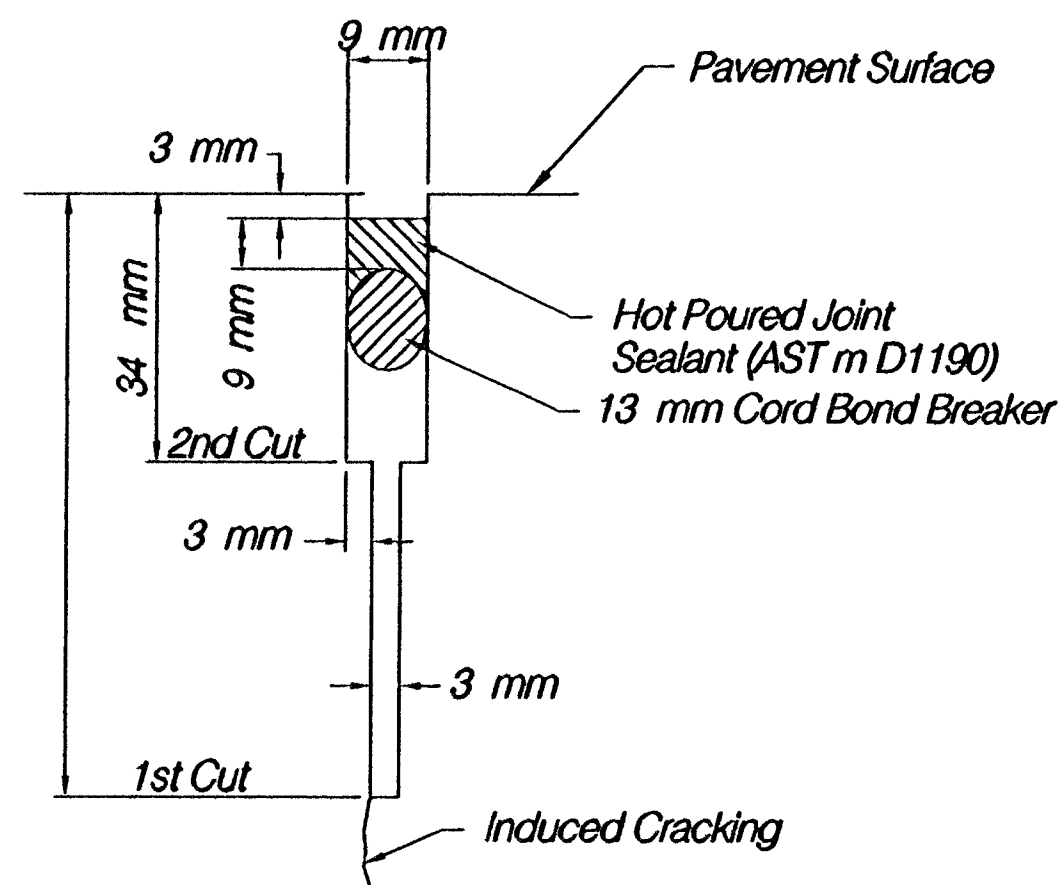


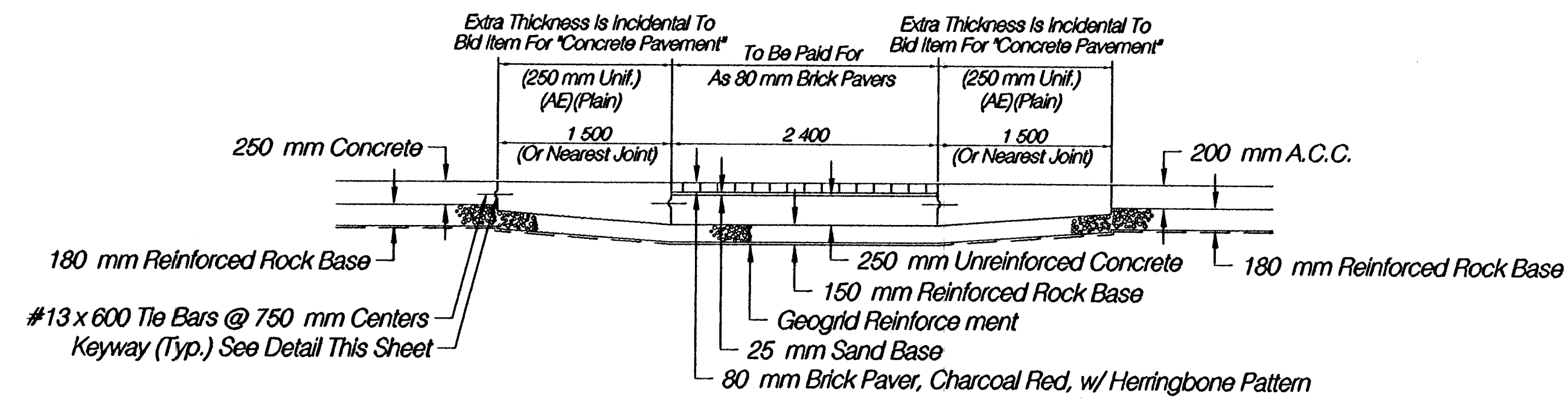
FHWA REG. NO.	STATE	PROJECT NO.	YEAR	SHEET NO.	TOTAL SHEETS
7	KANSAS	87 N-0199-01	2002	91	158

FED. AID NO. CMQ-N019(901)



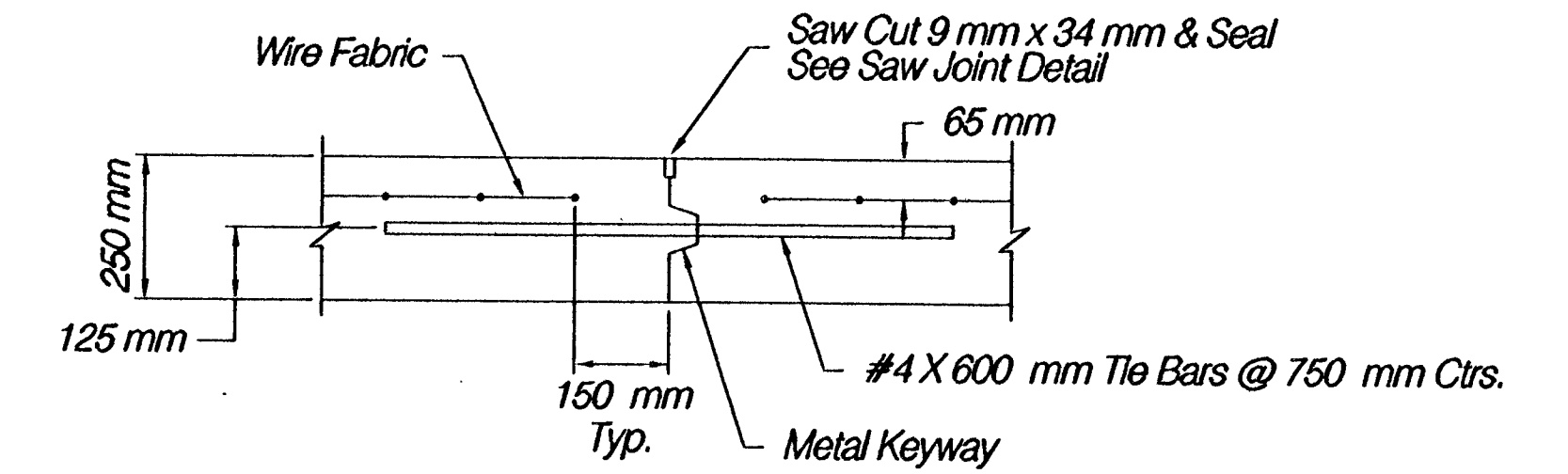
SAW JOINT DETAIL

NOTE: Joint To Be Sawed In Two Separate Operations

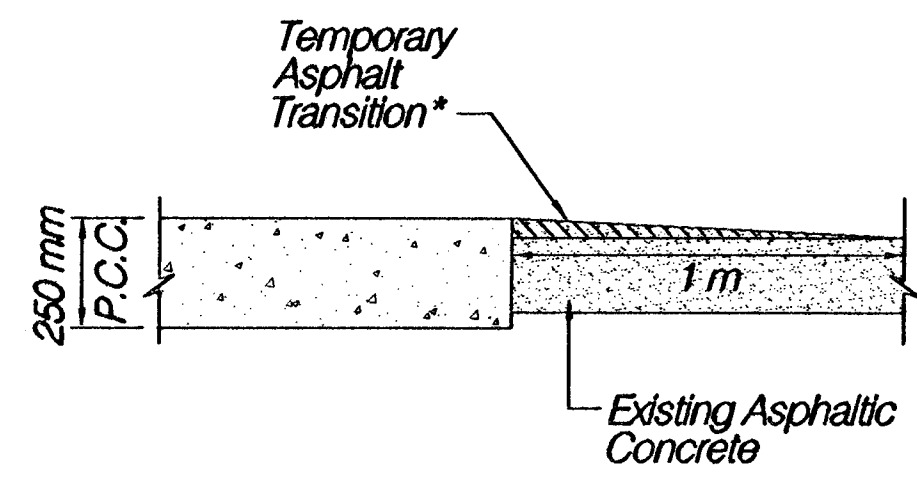


CROSSWALK BRICK PAVER SURFACE DETAIL

NOTE: Construction Of The Interlocking Precast Concrete Paving Bricks Shall Conform To KDOT Special Provision 90P-3956.

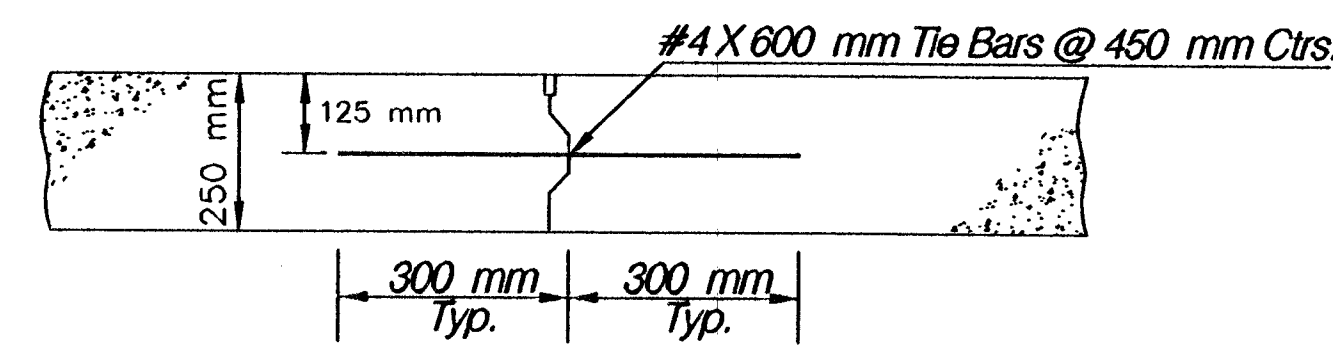


OPTIONAL LONGITUDINAL JOINT DETAIL (L.J.)



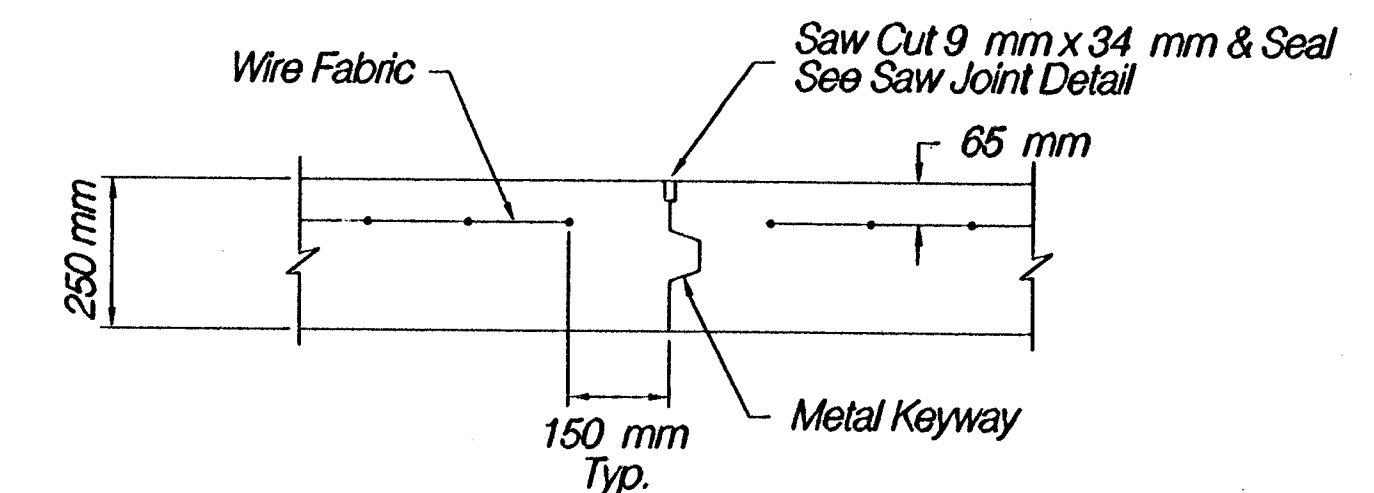
TRANSITION JOINT

*Note: Asphalt Transition Will Not Be Paid For Directly. It Will Be Considered Subsidiary To Other Paving Items.

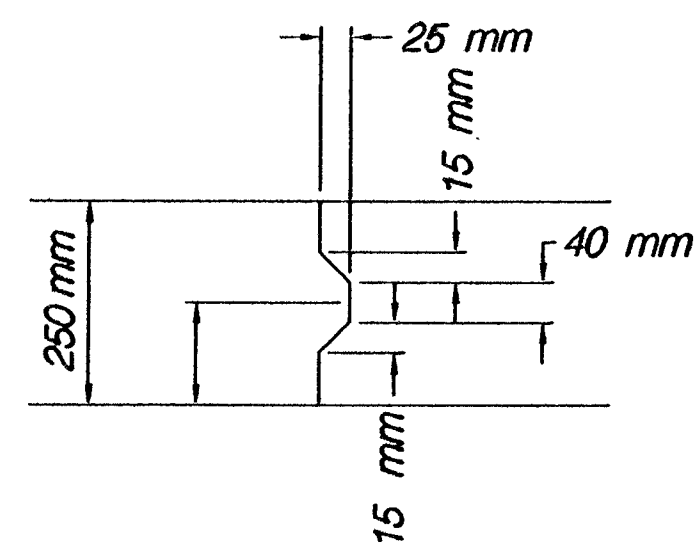


CONSTRUCTION JOINT

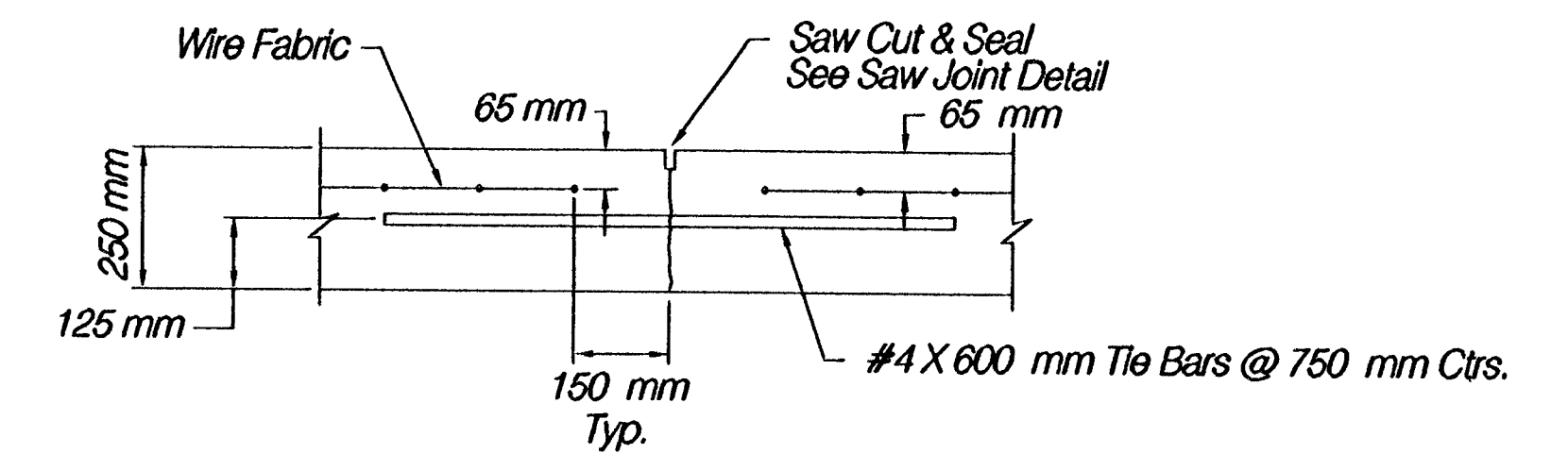
NOTE: A Construction Joint Is Required When The Pour Has Been Interrupted For A Substantial Length Of Time Or At The End Of A Day's Pour. Transverse Construction Joints Shall Be Sawed And Filled As Specified For Contraction Joints.



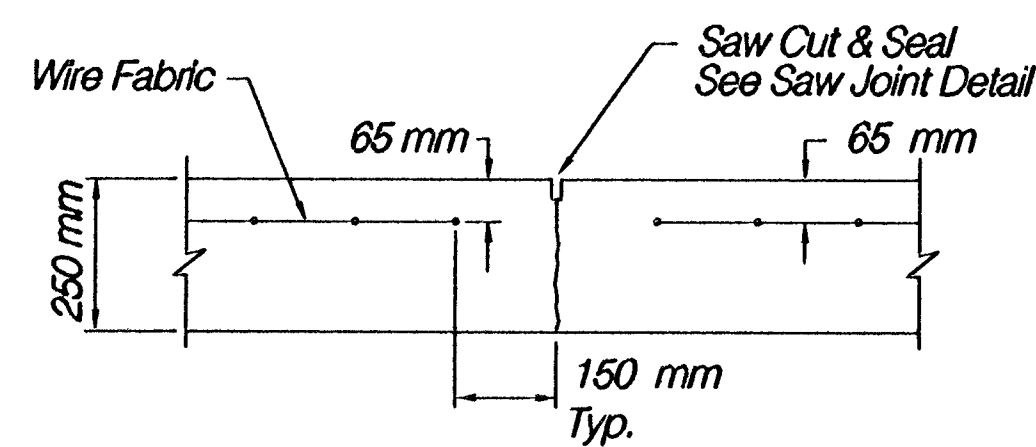
OPTIONAL CONTRACTION JOINT



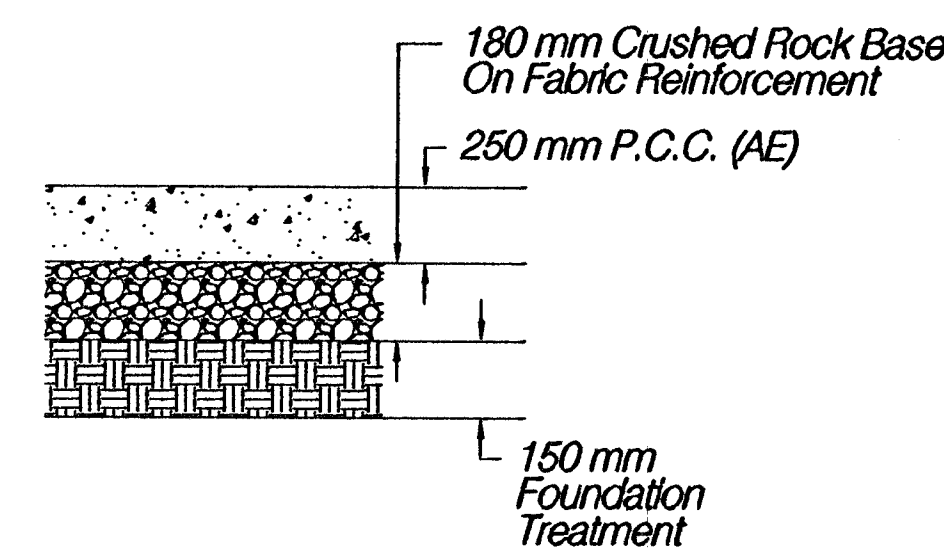
KEYWAY DETAIL



LONGITUDINAL JOINT DETAIL (L.J.)



CONTRACTION JOINT DETAIL (C.J.)



250 mm P.C.C. INTERSECTION PAVEMENT

ROCK ROAD & N 21st STREET INTERSECTION JOINT DETAILS

HWS Consulting Group Inc
 Omaha Office
 10844 Old Mill Rd., Ste 1
 Omaha, NE 68154
 Phone: (402) 333-5792
 Fax: (402) 333-2248

Designed By: EWE	Checked By: RJK
Drawn By: HS	Date: 4/10/02 Job No. 55-70-2003