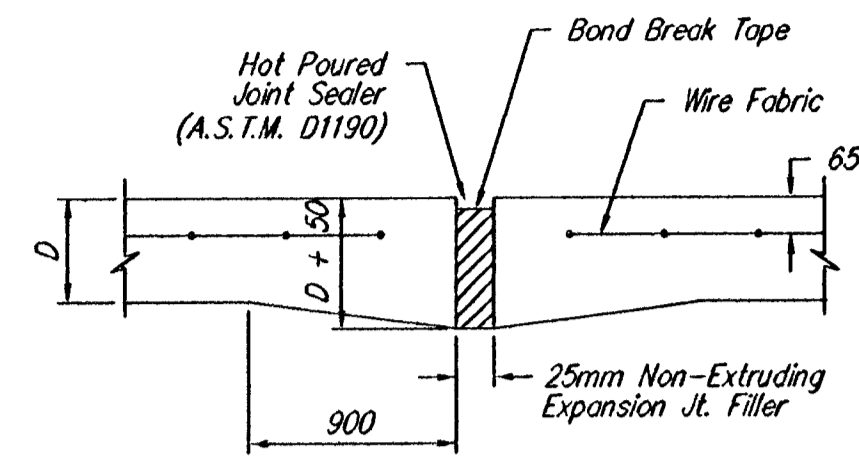


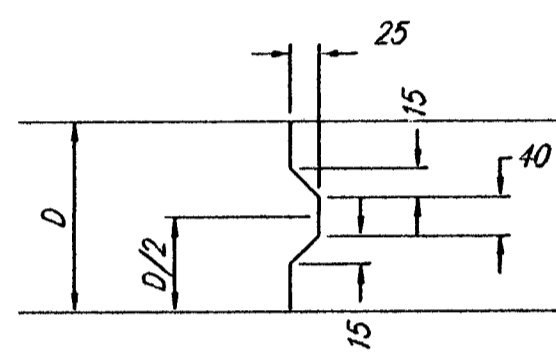
| FHWA REG. NO. | STATE | PROJECT NO. | YEAR | SHEET NO. | TOTAL SHEETS |
|---------------|--------|--------------|------|-----------|--------------|
| 7 | KANSAS | 87 N-0199-01 | 2002 | 95 | 158 |

FED. AID NO. CMQ-NO19(901)

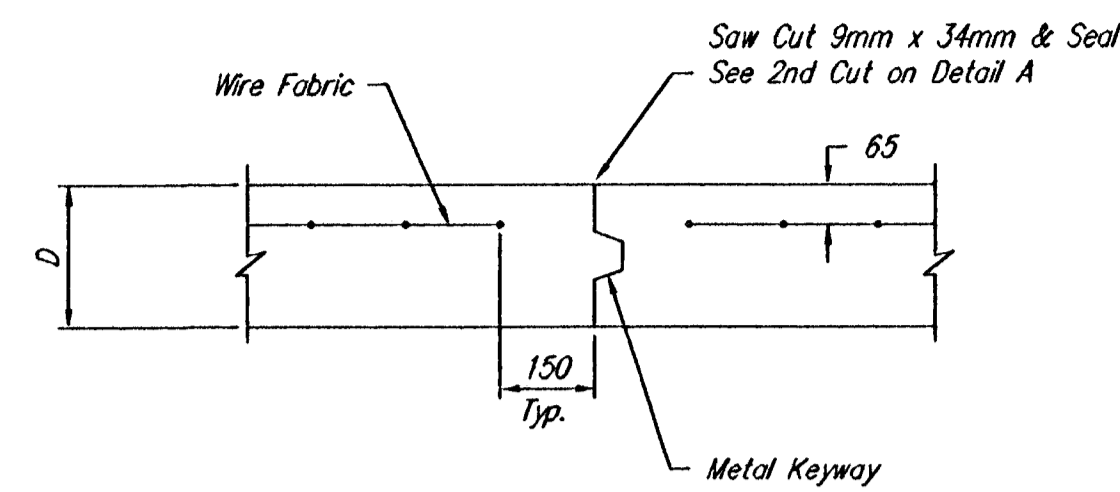


EXPANSION JOINT

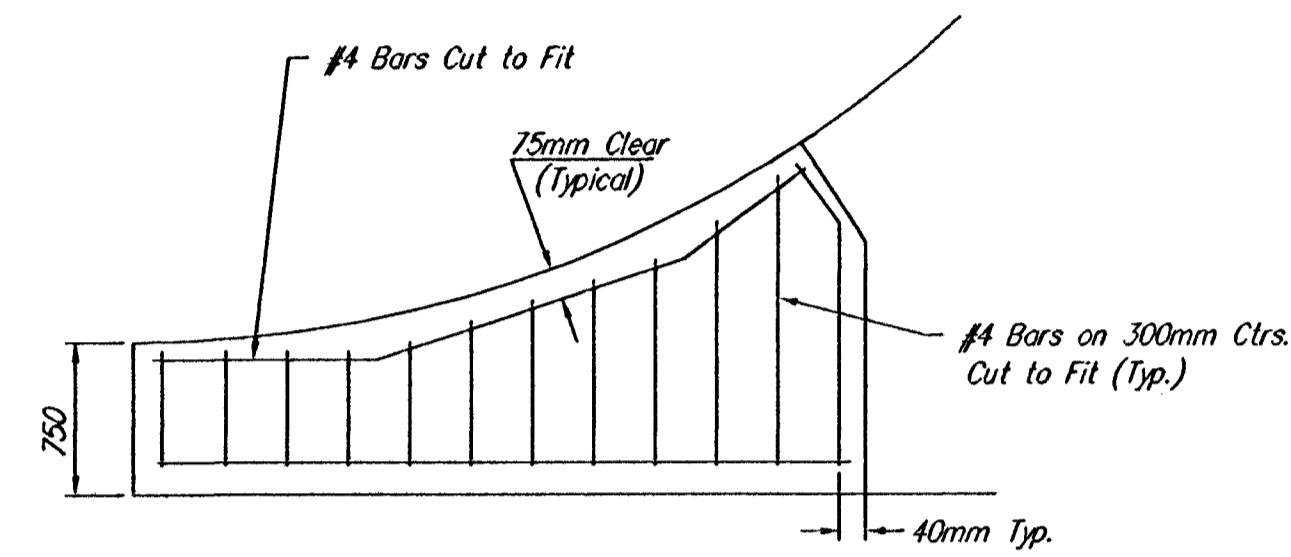
NOTE: Extra Thickness to be Subsidiary to Price of Square Meters Pavement



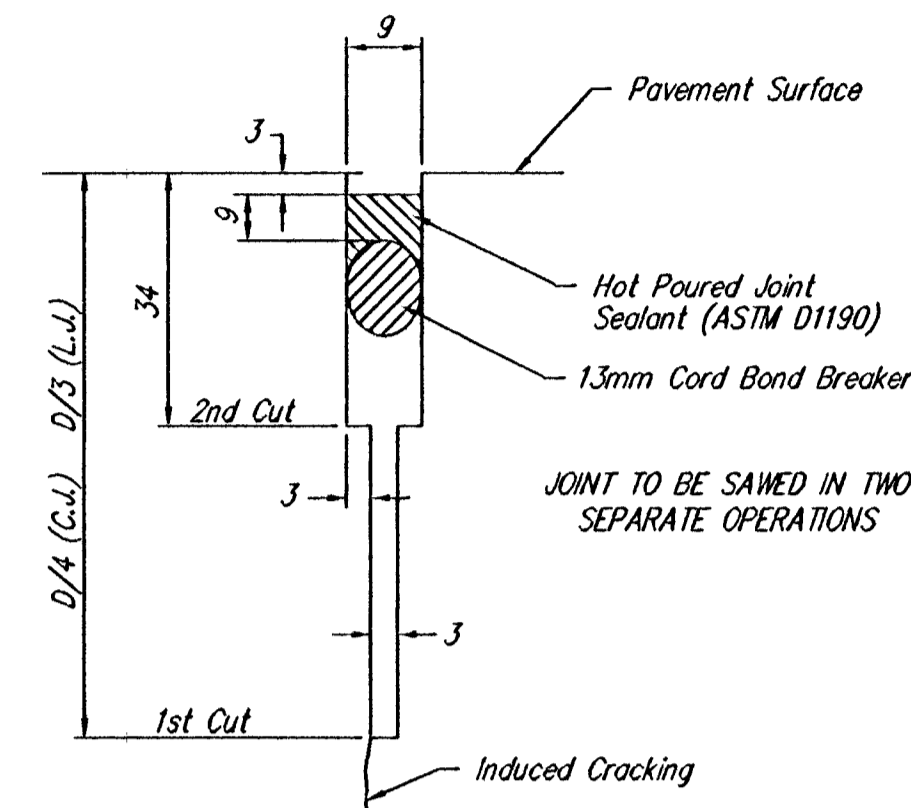
KEYWAY DETAIL



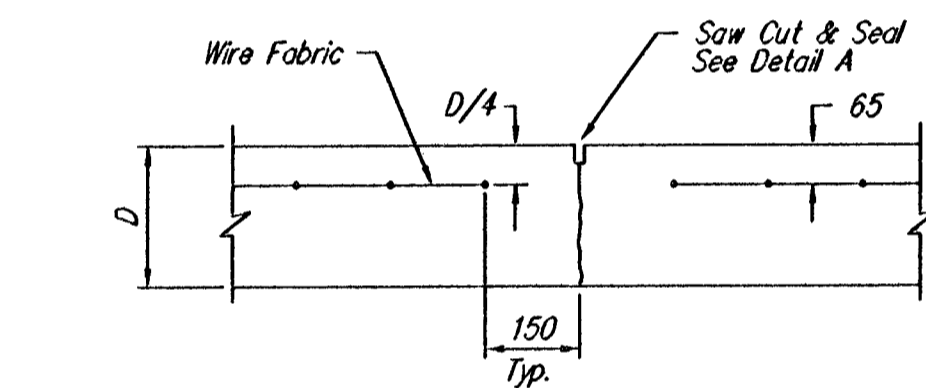
OPTIONAL CONTRACTION JOINT



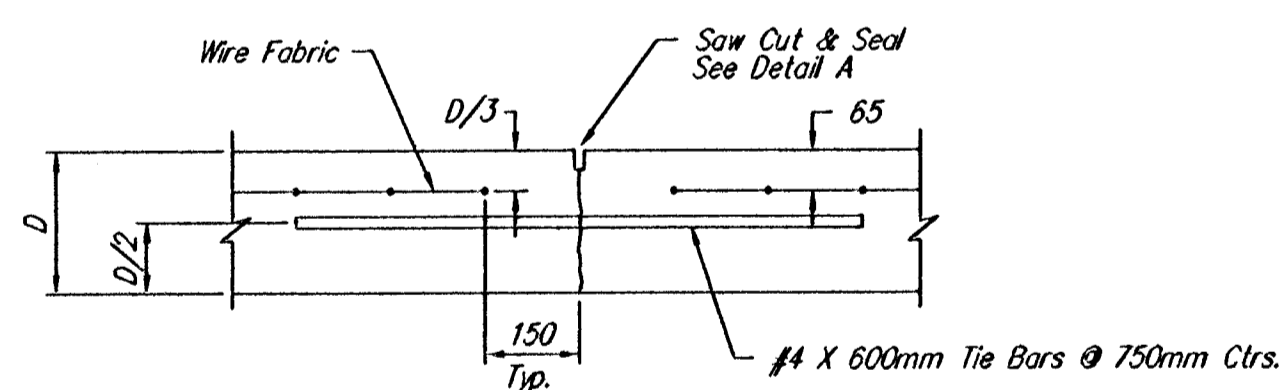
WING REINFORCING DETAIL



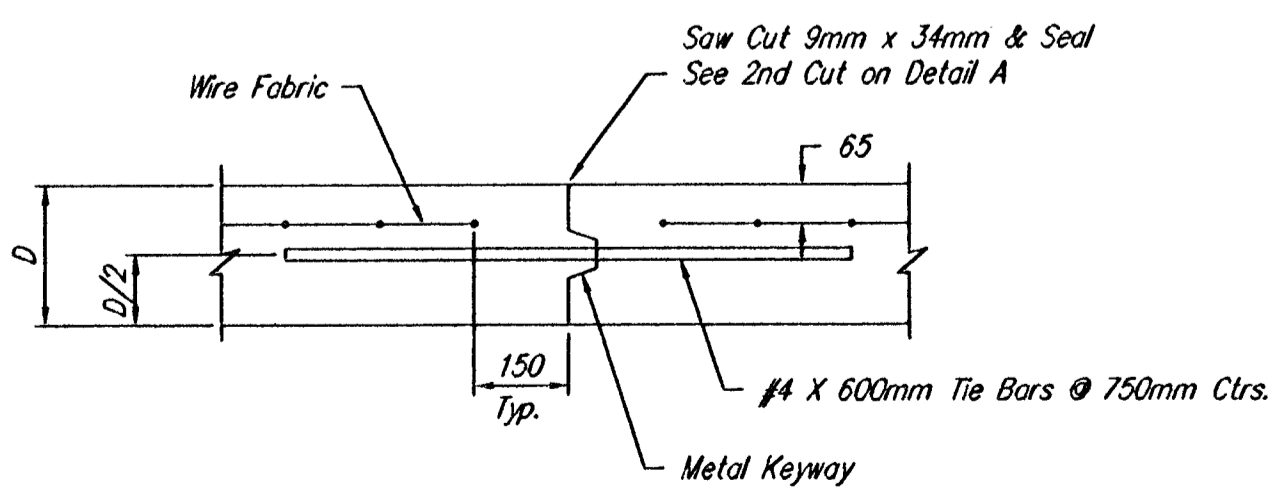
SAW JOINT DETAIL



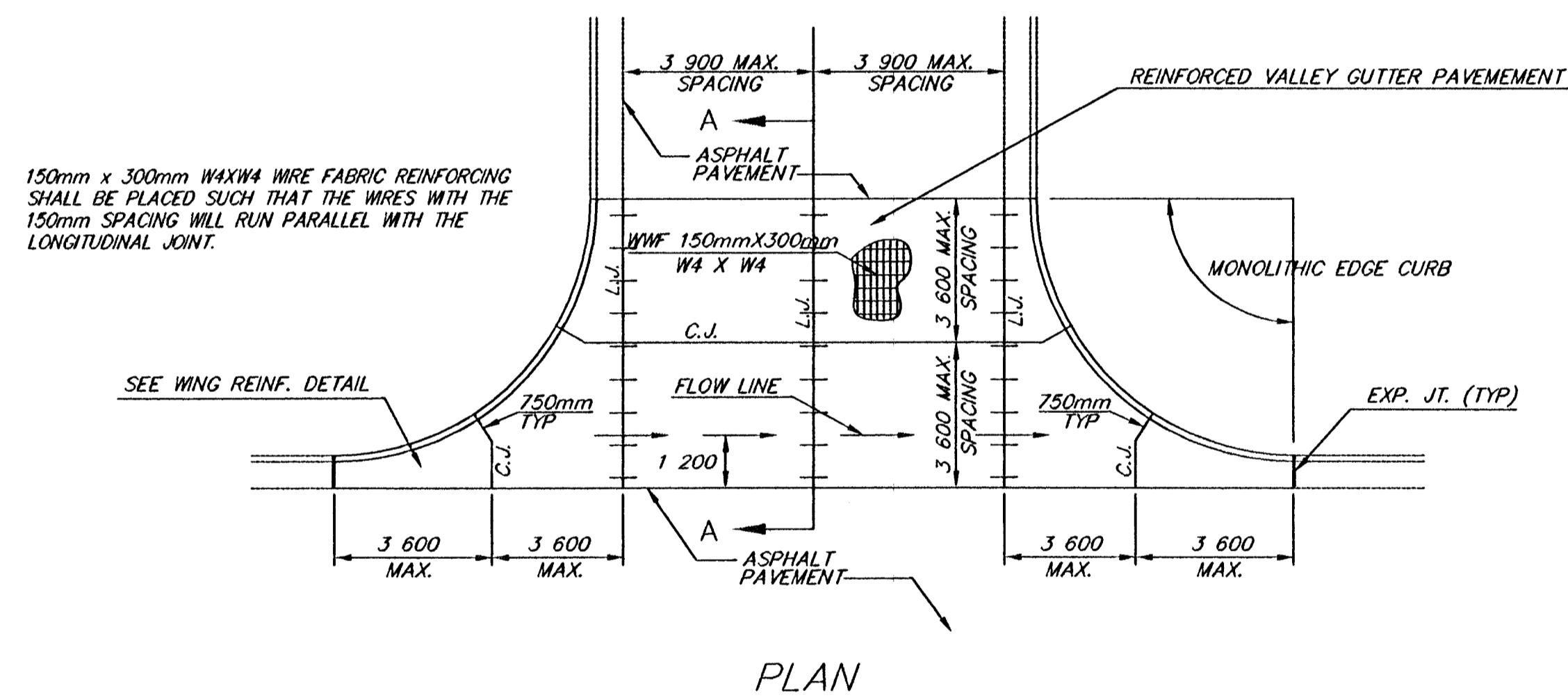
CONTRACTION JOINT DETAIL (C.J.)



LONGITUDINAL JOINT DETAIL (L.J.)

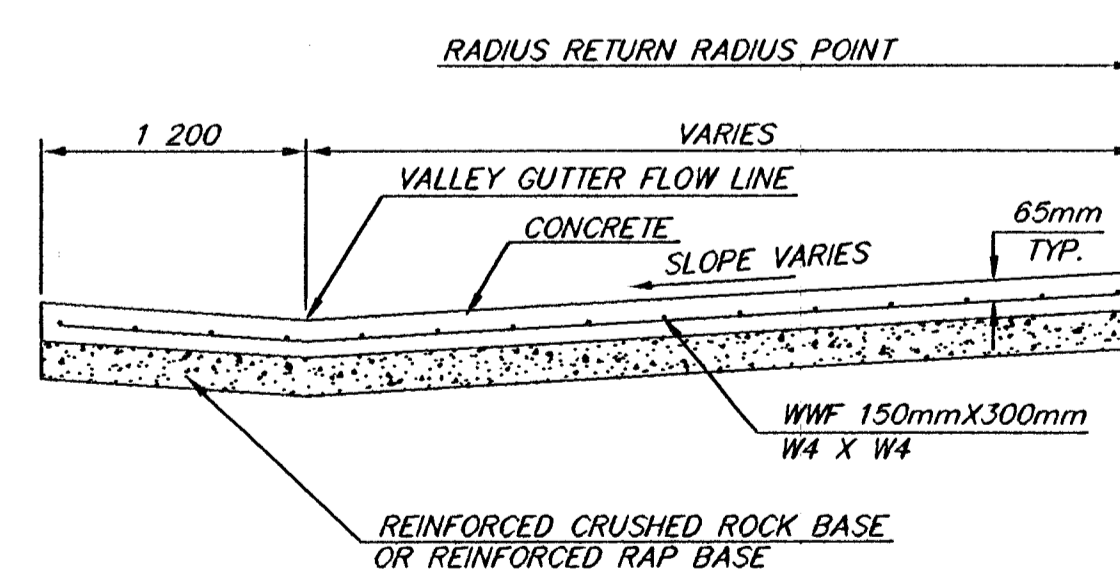


OPTIONAL LONGITUDINAL JOINT DETAIL (L.J.)



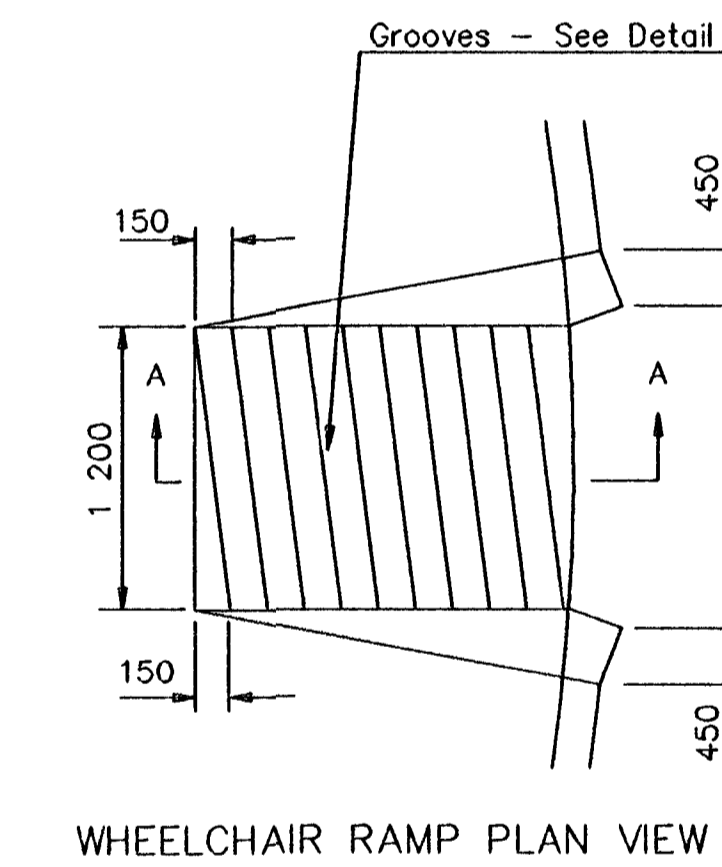
PLAN

150mm x 300mm W4XW4 WIRE FABRIC REINFORCING SHALL BE PLACED SUCH THAT THE WIRES WITH THE 150mm SPACING WILL RUN PARALLEL WITH THE LONGITUDINAL JOINT.

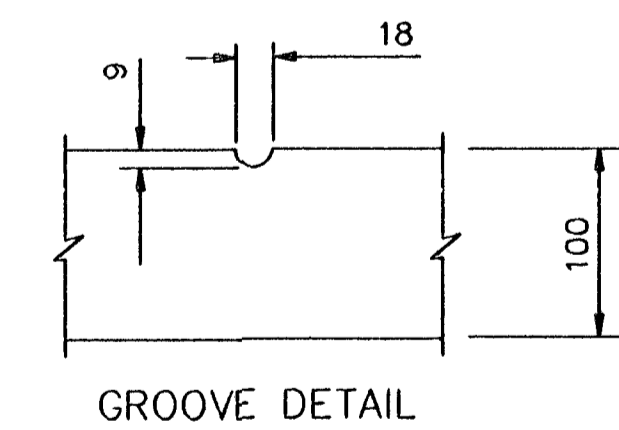


SECTION A-A

REINFORCED VALLEY GUTTER DETAIL

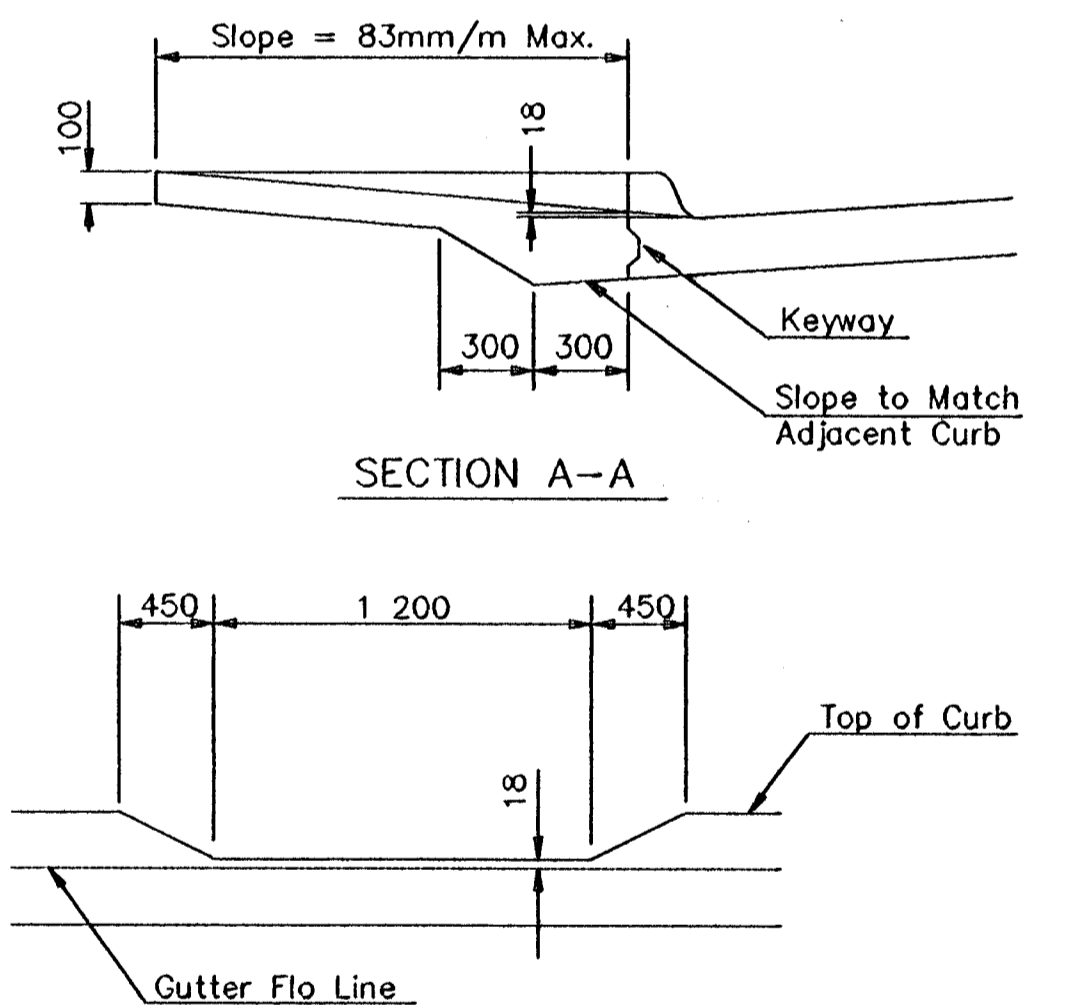


WHEELCHAIR RAMP PLAN VIEW



GROOVE DETAIL

WHEELCHAIR RAMP DETAIL



SECTION A-A

DEPRESSED CURB DETAIL

**VALLEY GUTTER DETAILS
WHEELCHAIR RAMP DETAILS**

HWS Consulting Group Inc. Omaha Office
10844 Old Mill Rd., Ste 1
Omaha, NE 68154
Phone: (402) 333-5792
Fax: (402) 333-2249

Designed By: BWE Checked By: RJK
Drawn By: HS, TS Date: 3-25-2002 Job No. 55-70-2003