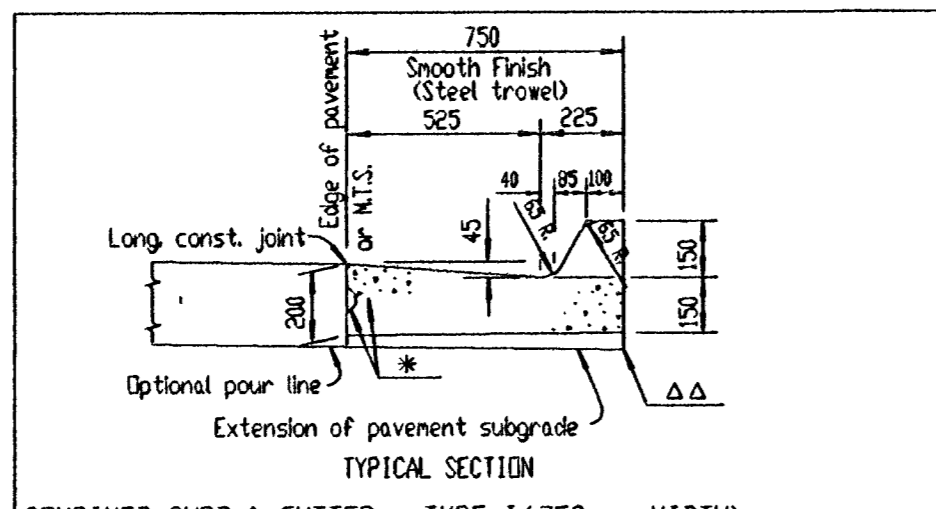
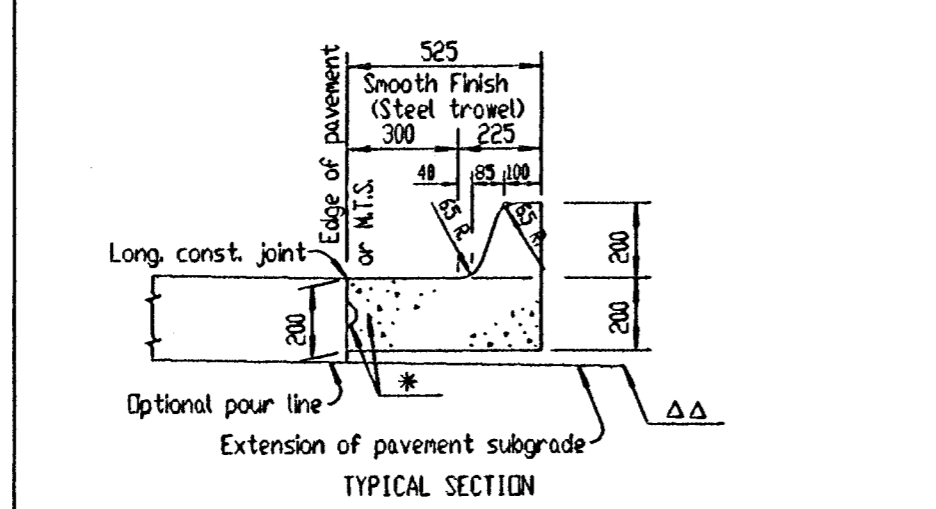


FHWA REG NO.	STATE	PROJECT NO.	YEAR	SHEET NO.	TOTAL SHEETS
7	KANSAS	87 N-0199-01	2002	96	158

FED. AID NO. CMQ-NO19(901)



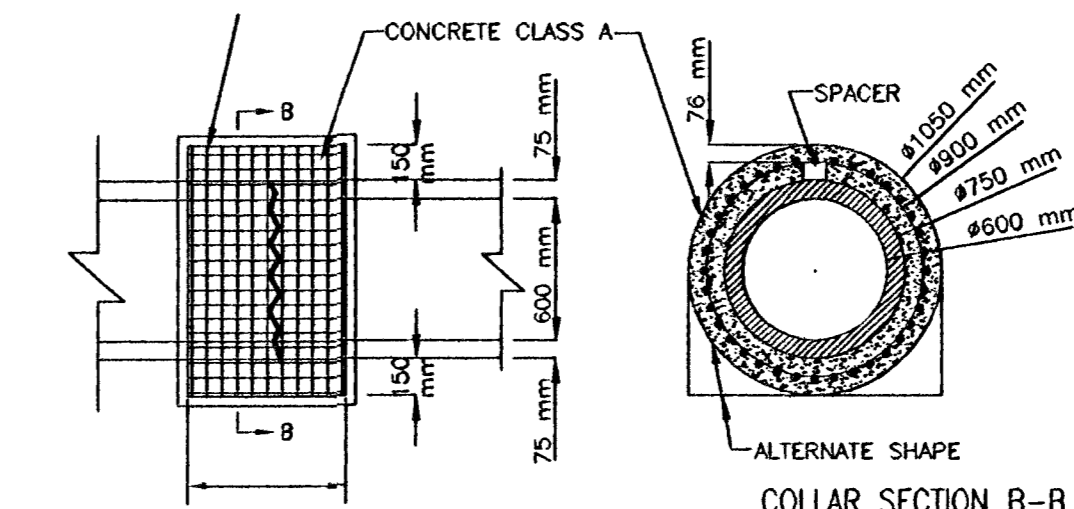
COMBINED CURB & GUTTER - TYPE I (750 mm WIDTH)



COMBINED CURB & GUTTER - TYPE III (525 mm WIDTH)

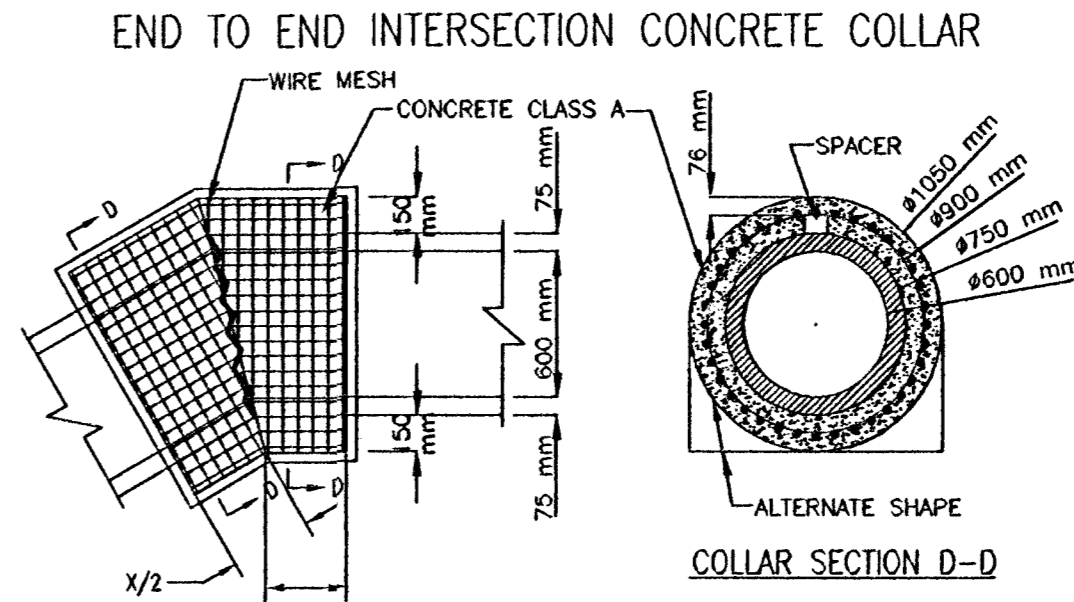
* Longitudinal construction joint and #16 x 900 mm bars @ 750 mm ctrs., where concrete pavement is constructed.
 ΔΔ Contractor has the option of thickening the curb and gutter as shown.

GENERAL NOTE
 Combined curb and gutter or gutter adjoining concrete pavement may, at the contractor's option, be poured either monolithically or separately, using either the mix used in the concrete pavement or Class "A" Concrete (AC). The combined curb and gutter or gutter shall have the same section as shown on the plans. If poured monolithically, dowel bars may be omitted from the combined curb and gutter or gutter, but the wire mesh shall be extended to 150 mm or less from the back of the curb or gutter. Pavement joints shall be continued through curb or gutter and no other planes of weakness will be required. Joints in the combined curb and gutter or gutter are to be filled with the same material as used for the pavement joints.
 Expansion joints in the combined curb and gutter are to be placed opposite expansion joints in the pavement.
 Where combined curb and gutter does not abut concrete pavement or concrete base course, omit tie bars and longitudinal construction joint and place a 25 mm pre-moulded Expansion Joint Filler (Nonextruding, Type B) cut to the dimensions of the combined curb and gutter or gutter, at a spacing not to exceed 75 m and at the ends of curb returns.
 Where combined curb and gutter or gutter is adjacent to bituminous construction, planes of weakness shall be constructed at 6 m intervals.
 A 1.00 m length of transition from normal gutter section to the tapered gutter section shall be used at the ends of each run of gutter except where the gutter abuts a curb, such as at the end of a bridge. Inlets shall be located so as not to fall within this transition section.
 Where pressure relief joint (Urethane Foam) is placed across the pavement, and gutter or curb and gutter is continued on for more than 3 m, use Type B, nonextruding, joint filler through gutter section, shaped to fit gutter or curb and gutter. Material may be solid Type B, approximately 100 mm thick, or other thickness pieces (Type B), bonded together with cold nastic or other material, as approved by the Engineer.
 For expansion joint treatment where combined curb and gutter or gutter abuts a bridge wing on a U type abutment see bridge drawings.
 Longitudinal joints shall be sealed with joint sealant. See Special Provisions for type.



COLLAR SECTION B-B

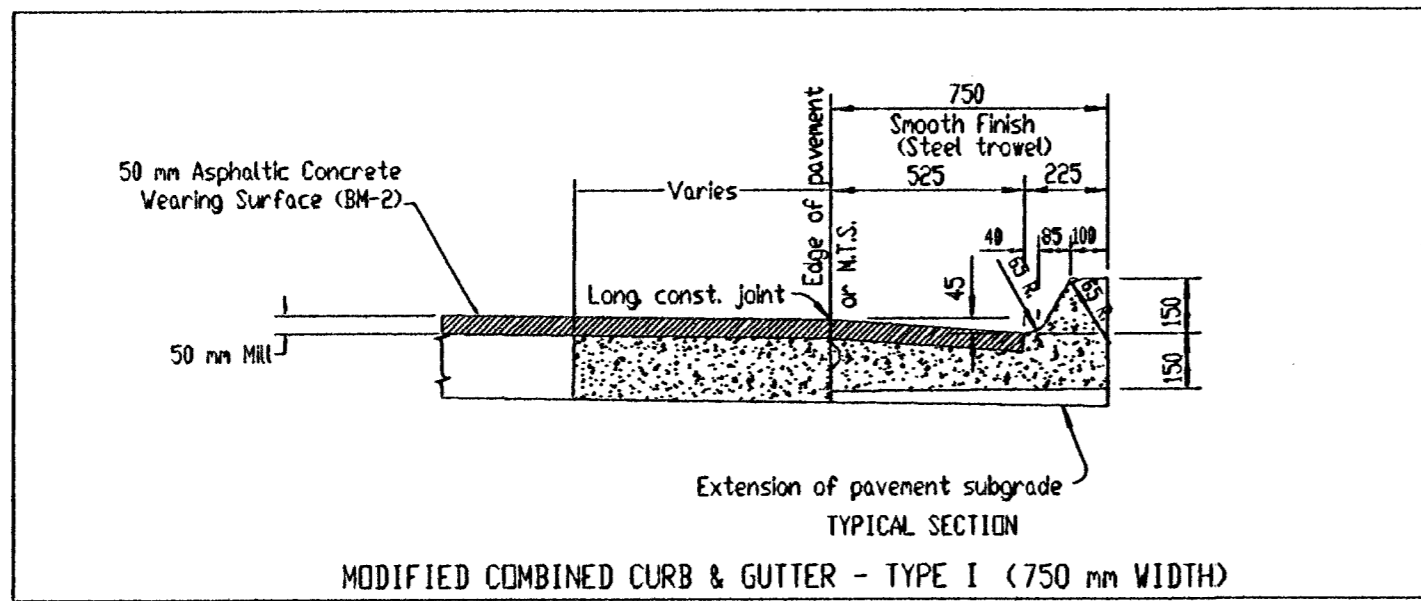
380 mm THRU 750 mm PIPE, X=450 mm
 750 mm THRU 1,200 mm PIPE, X=600 mm
 1,200 mm & LARGER PIPE, X=900 mm
 600 mm PIPE SHOWN FOR EXAMPLE, OTHER SIZES OF PIPE TO BE SIMILAR.



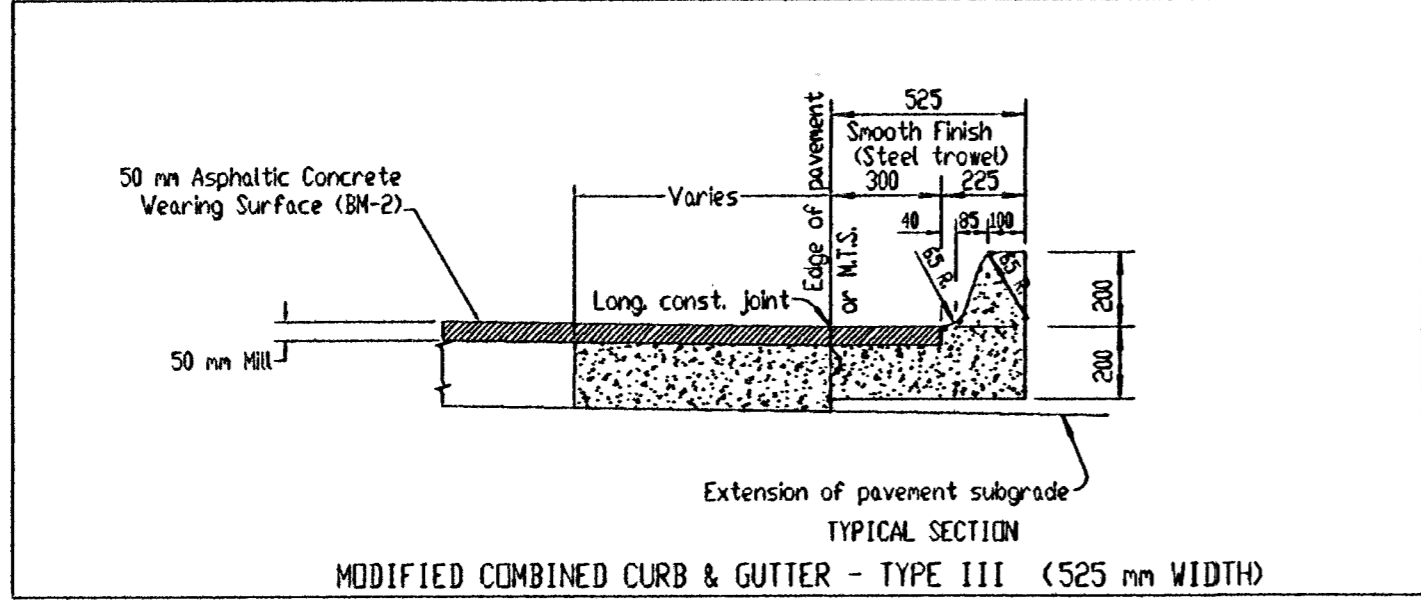
COLLAR SECTION D-D

380 mm THRU 750 mm PIPE, X=450 mm
 750 mm THRU 1,200 mm PIPE, X=600 mm
 1,200 mm & LARGER PIPE, X=900 mm
 600 mm PIPE SHOWN FOR EXAMPLE, OTHER SIZES OF PIPE TO BE SIMILAR.

END TO END (ANGLE) INTERSECTION CONCRETE COLLAR



MODIFIED COMBINED CURB & GUTTER - TYPE I (750 mm WIDTH)



MODIFIED COMBINED CURB & GUTTER - TYPE III (525 mm WIDTH)

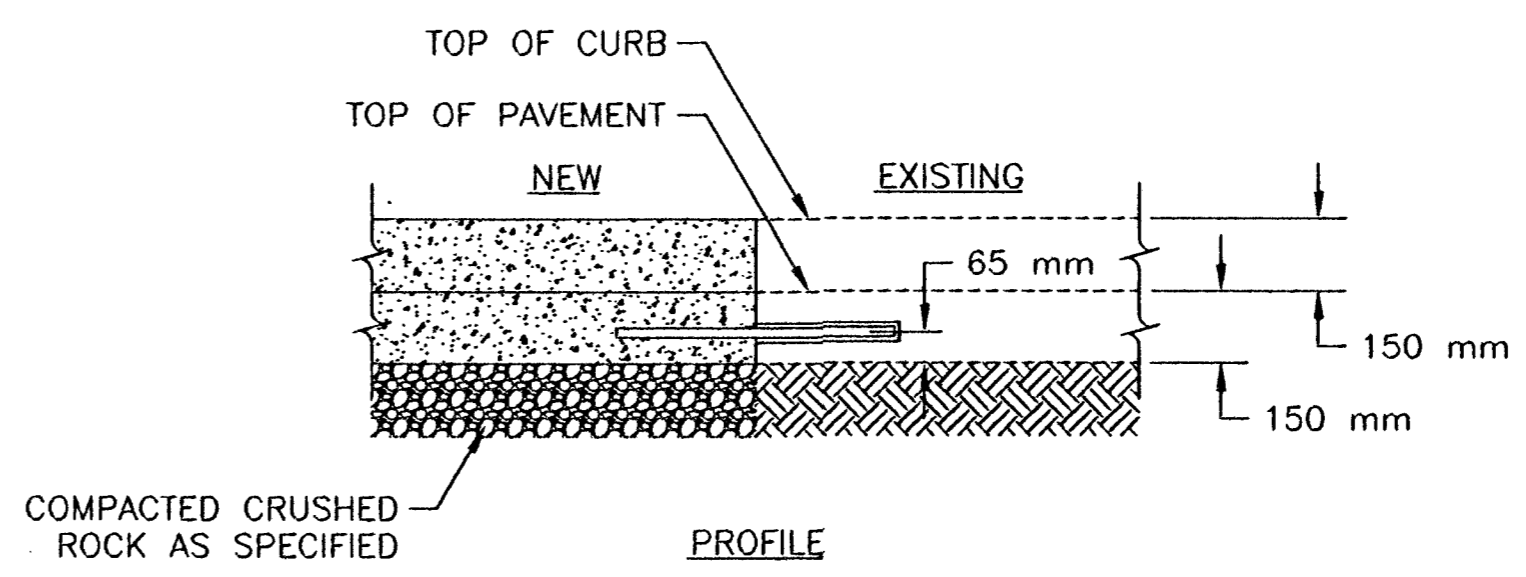
PAYEMENT WIDENING DETAIL (WITH ASPHALT OVERLAY)

MODIFIED CURB & GUTTER (COMBINED) (AE)

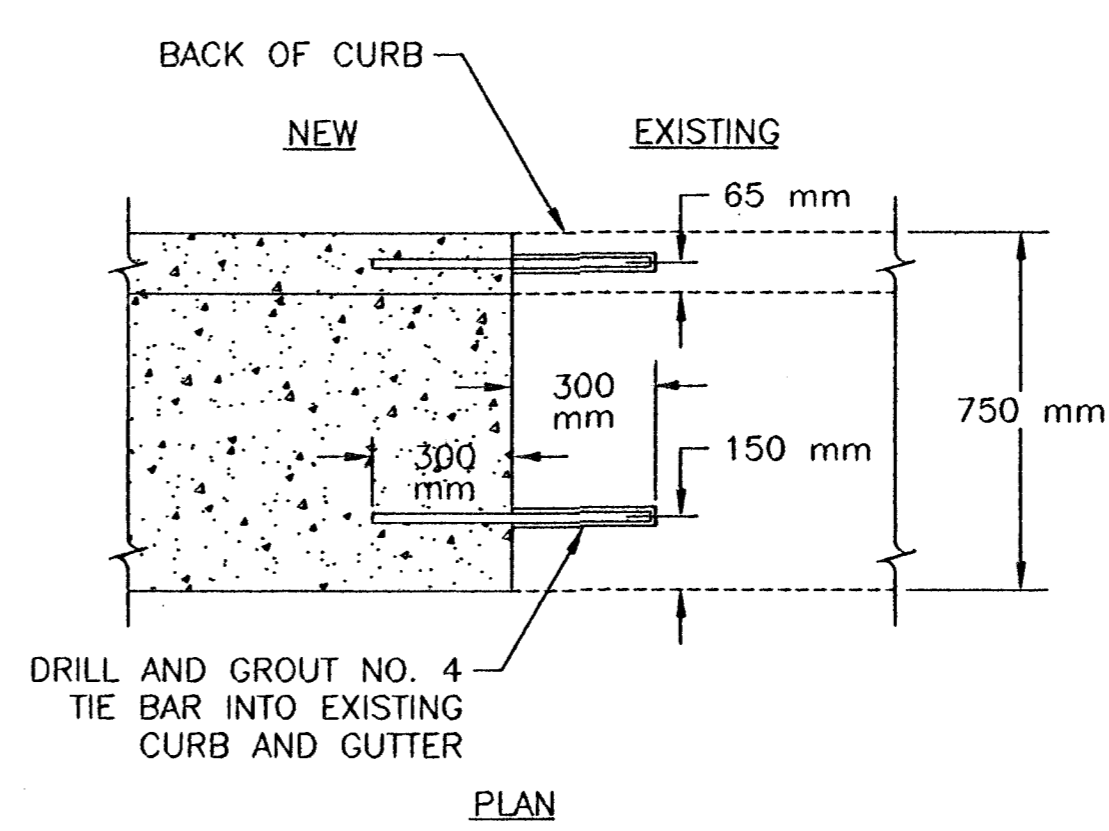
STATION	STATION	SIDE	m	REMARKS
0+485.0	0+488.9	LT/RT	3.9	ROCK ROAD - MEDIAN
0+539.2	0+541.6	LT	2.4	ROCK ROAD - MEDIAN
0+781.2	0+773.4	LT	12.2	ROCK ROAD - MEDIAN
0+817.5	0+827.1	RT	9.6	ROCK ROAD - MEDIAN
0+889.0	0+891.0	RT	4.0	ROCK ROAD
0+913.6	0+934.5	LT/RT	30.9	ROCK ROAD - MEDIAN
0+968.7	0+974.8	LT	6.1	ROCK ROAD - MEDIAN
1+024.9	1+032.2	RT	7.3	ROCK ROAD - MEDIAN
1+080.9	1+085.9	LT	5.0	ROCK ROAD

MODIFIED CURB & GUTTER (COMBINED) (AE)

STATION	STATION	SIDE	m	REMARKS
49+422.1	49+447.5	RT	25.4	21st STREET
49+422.1	49+448.3	LT	26.2	21st STREET
49+912.5	49+918.1	LT	5.6	21st STREET
49+946.8	49+950.0	LT	3.2	21st STREET - MEDIAN
49+950.0	49+975.0	LT	25	21st STREET - MEDIAN
50+119.6	50+122.1	LT	2.5	21st STREET - MEDIAN
50+179.4	50+200.0	LT	20.6	21st STREET
50+316.7	50+346.3	RT	29.6	21st STREET



PROFILE



PLAN

CONCRETE CURB ABUTMENT DETAIL

NOTE:
 THIS DETAIL SHALL APPLY IN ALL LOCATIONS WHERE NEW CURB AND GUTTER SECTIONS ABUT EXISTING CURB SECTIONS.

MISCELLANEOUS DETAILS

HWS Consulting Group Inc. Omaha Office
 10814 Old Mill Rd., Ste 1
 Omaha, NE 68154
 Phone: (402) 333-5792
 Fax: (402) 333-2249

Designed By: BWE	Checked By: RJK
Drawn By: HS, TS	Date: 3-25-2002 Job No. 55-10-2003