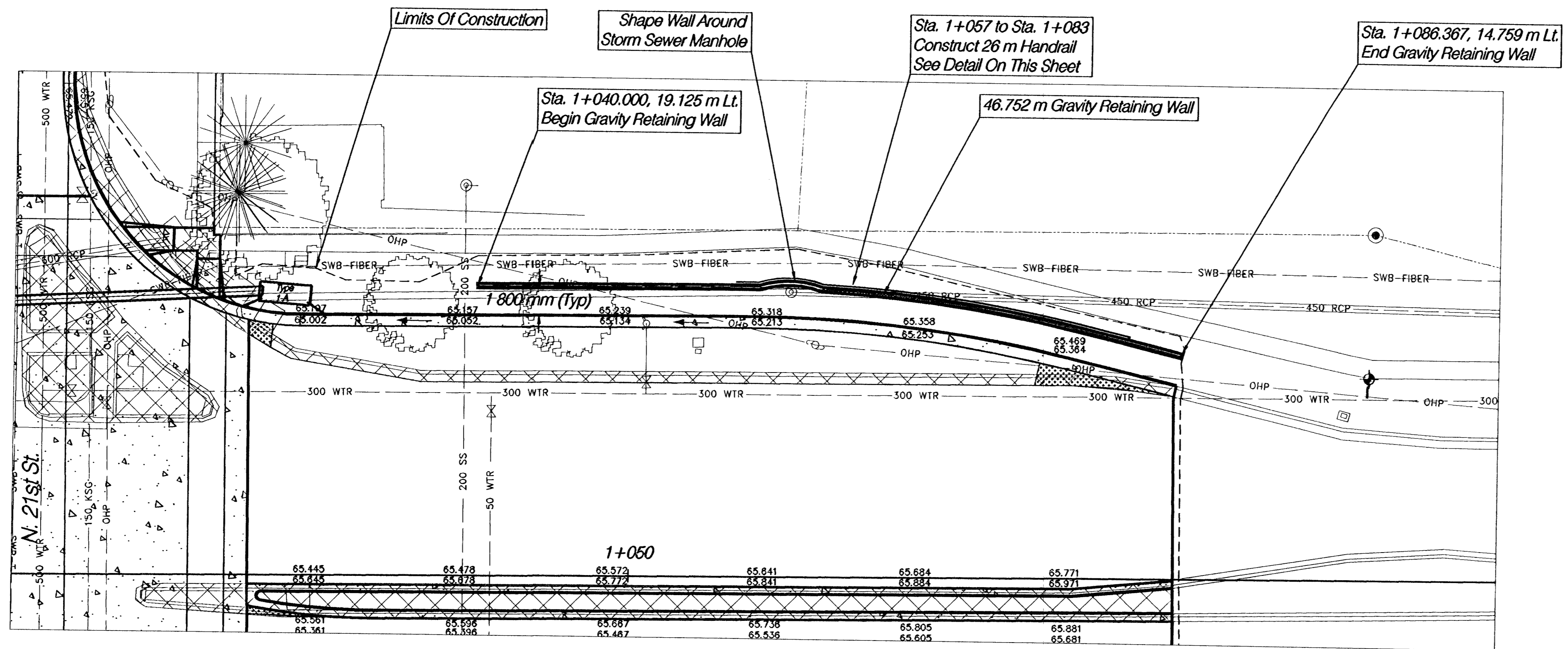


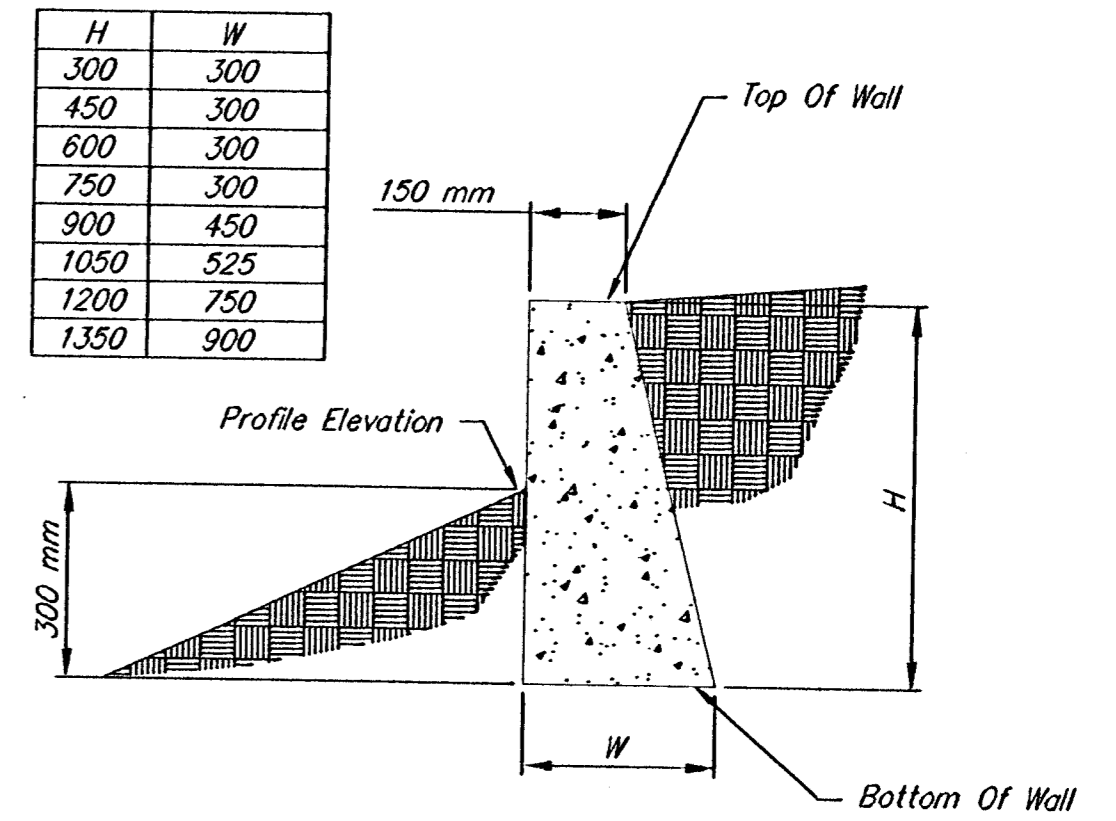
FHWA REG. NO.	STATE	PROJECT NO.	YEAR	SHEET NO.	TOTAL SHEETS
7	KANSAS	87 N-0199-01	2002	97	158

FED. AID NO. - CMQ-N019(901)

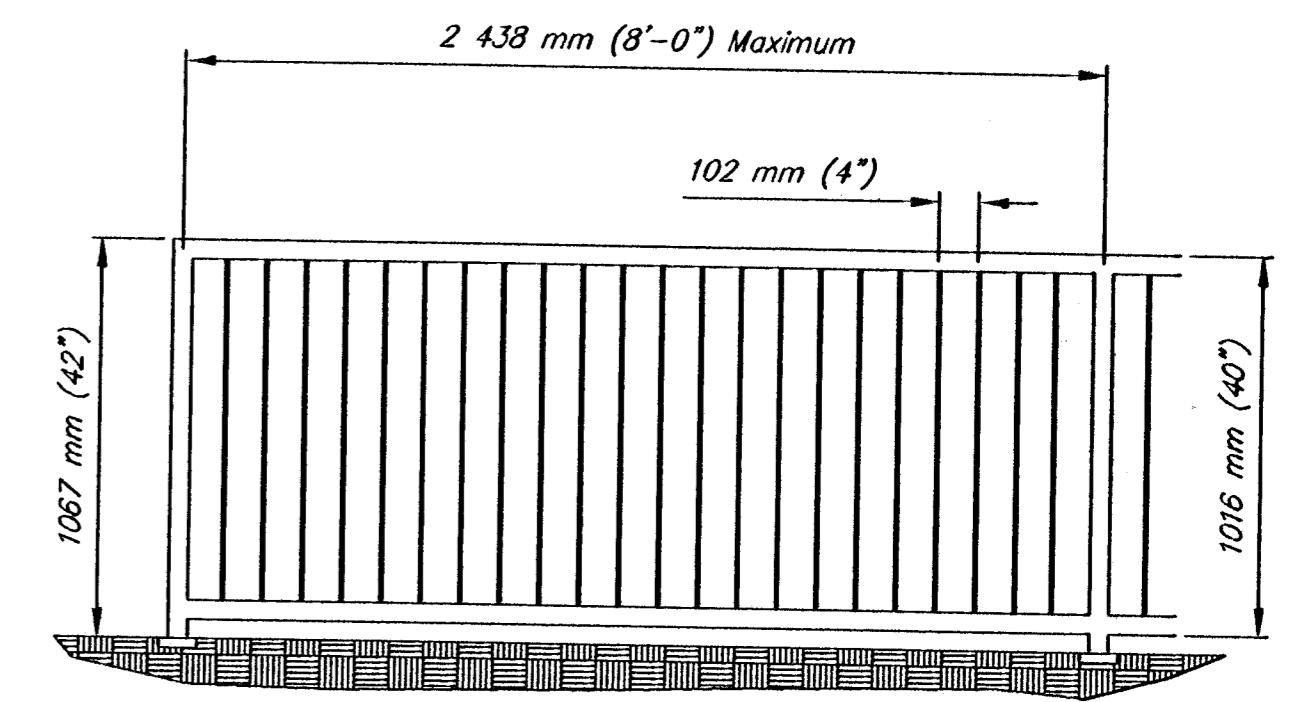
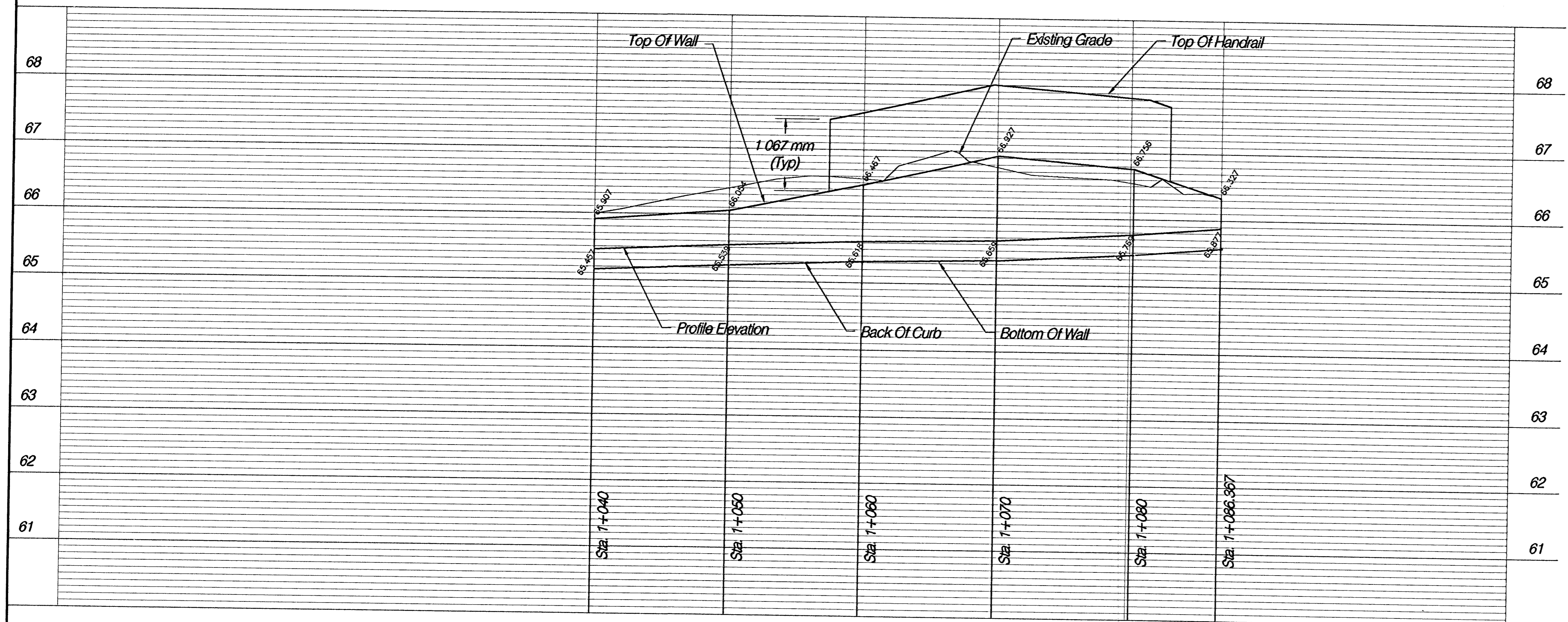
N. ROCK ROAD



Note: Station & Offset Are To The Street Side Wall Face
Place Expansion Joints Every 5.0 m
Construct 50 mm Weep Holes Every 7 m



GRAVITY WALL DETAIL (CONCRETE)



HANDRAIL DETAIL

Note: Post - 51 mm (2") ϕ 6 mm (1/4") w/ 152x152x10 mm (6x6x3/8") Flange, 4 Anchor
Top Rail - 51 mm (2") x 76 mm (3") 6 mm (1/4") Wall
Bottom Rail - 51 mm (2") ϕ (1/4") Wall
Pickets - 13 mm (1/2") ϕ Solid Bar 102 mm (2") O.C.
Powder Coat Finish 0.08-0.10 mm (3-4 mils)
Matt Black, Hunter Green, Bronze

N. ROCK ROAD GRAVITY RETAINING WALL

HWS Consulting Group Inc. 10844 Old Mill Rd. Ste 1
Omaha, NE 68154
Phone: (402) 333-5792
Fax: (402) 333-2248

Designed By: BWE
Checked By: RJK
Drawn By: HHS
Date: 03-25-2002
Job No: 55-70-2003