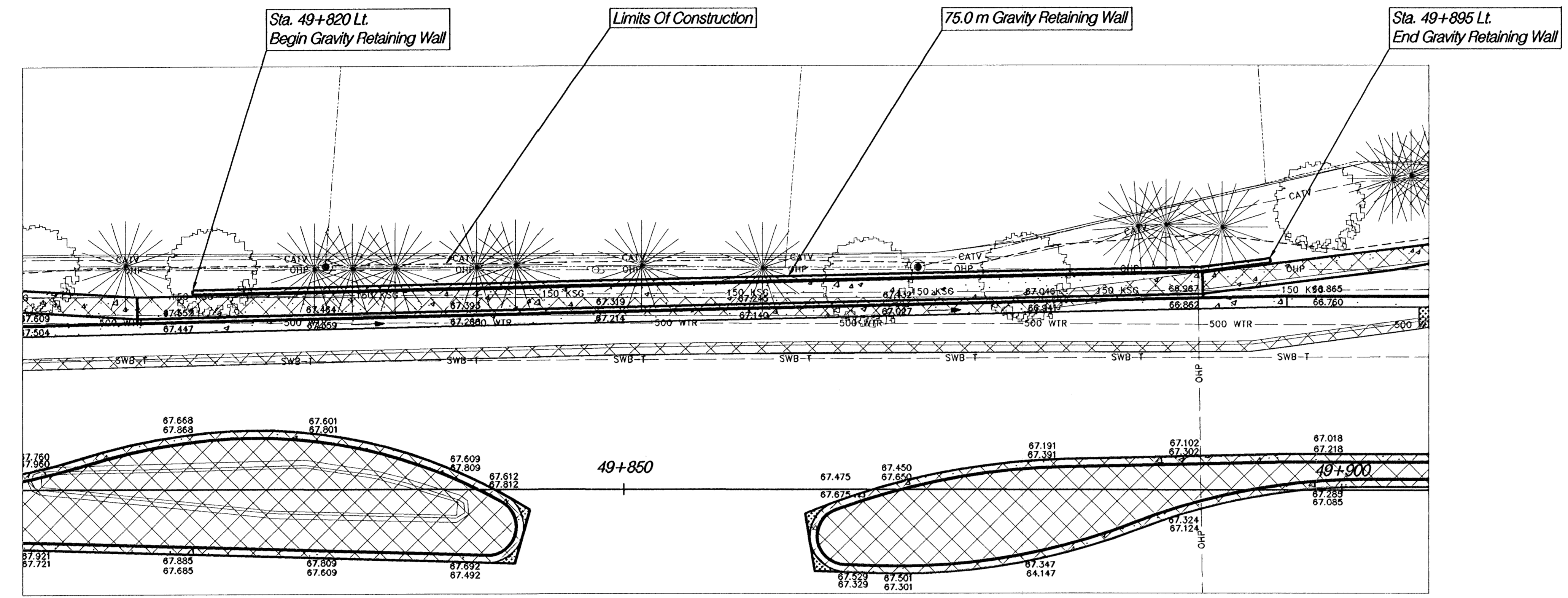


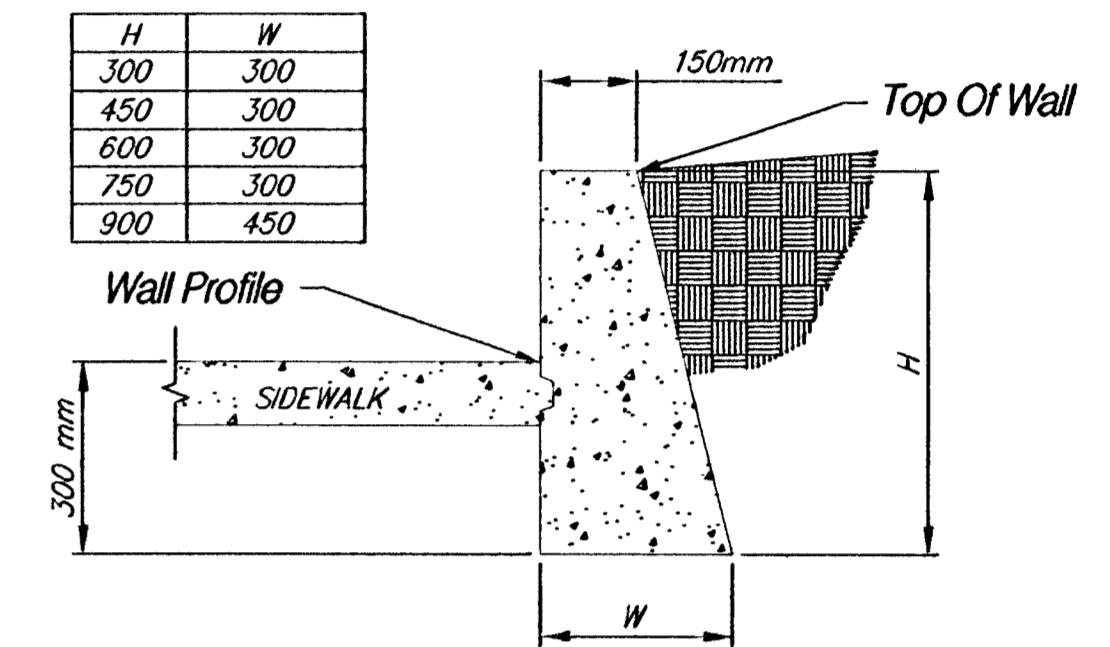
FHWA REG NO.	STATE	PROJECT NO.	YEAR	SHEET NO.	TOTAL SHEETS
7	KANSAS	87 N-0199-01	2002	98	158

FED. AID NO. - CMQ-N019(901)

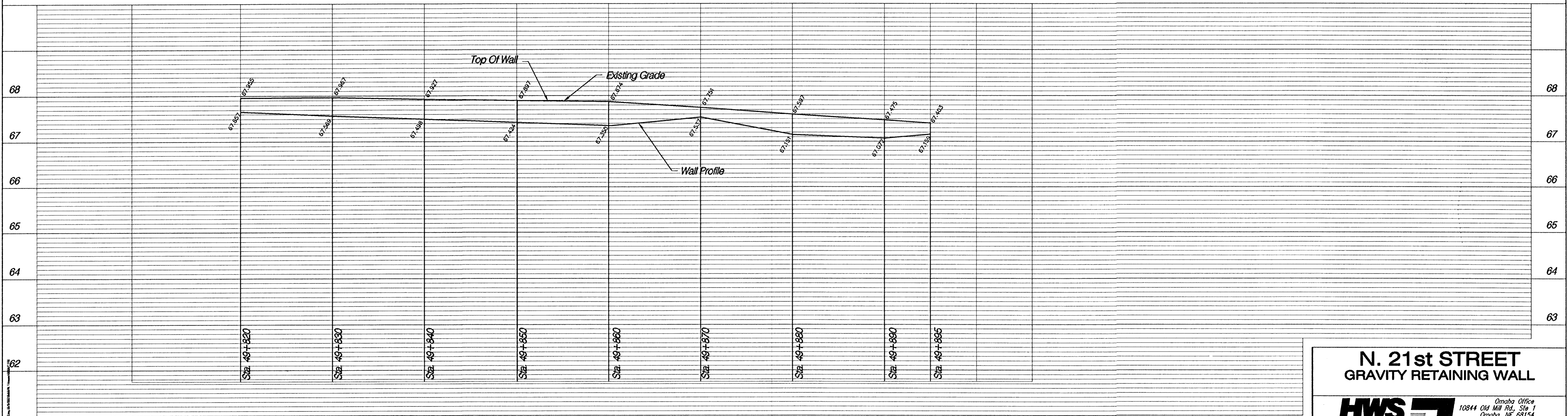
### N. 21st STREET



Note: Station & Offset Are To The Street Side Wall Face  
Place Expansion Joints Every 5.0 m  
Construct 50 mm Weep Holes Every 7.0 m



**GRAVITY WALL DETAIL (CONCRETE)**



Note: See Plan Sheets For Tree Removal

**N. 21st STREET  
GRAVITY RETAINING WALL**

**HWS** Consulting Group Inc. Omaha Office  
10844 Old Mill Rd., Ste 1  
Omaha, NE 68154  
Phone: (402) 333-5792  
Fax: (402) 333-2248

Designed By: EWE	Checked By: RJK
Drawn By: HS	Date: 03-25-2002 Job No. 55-70-2003