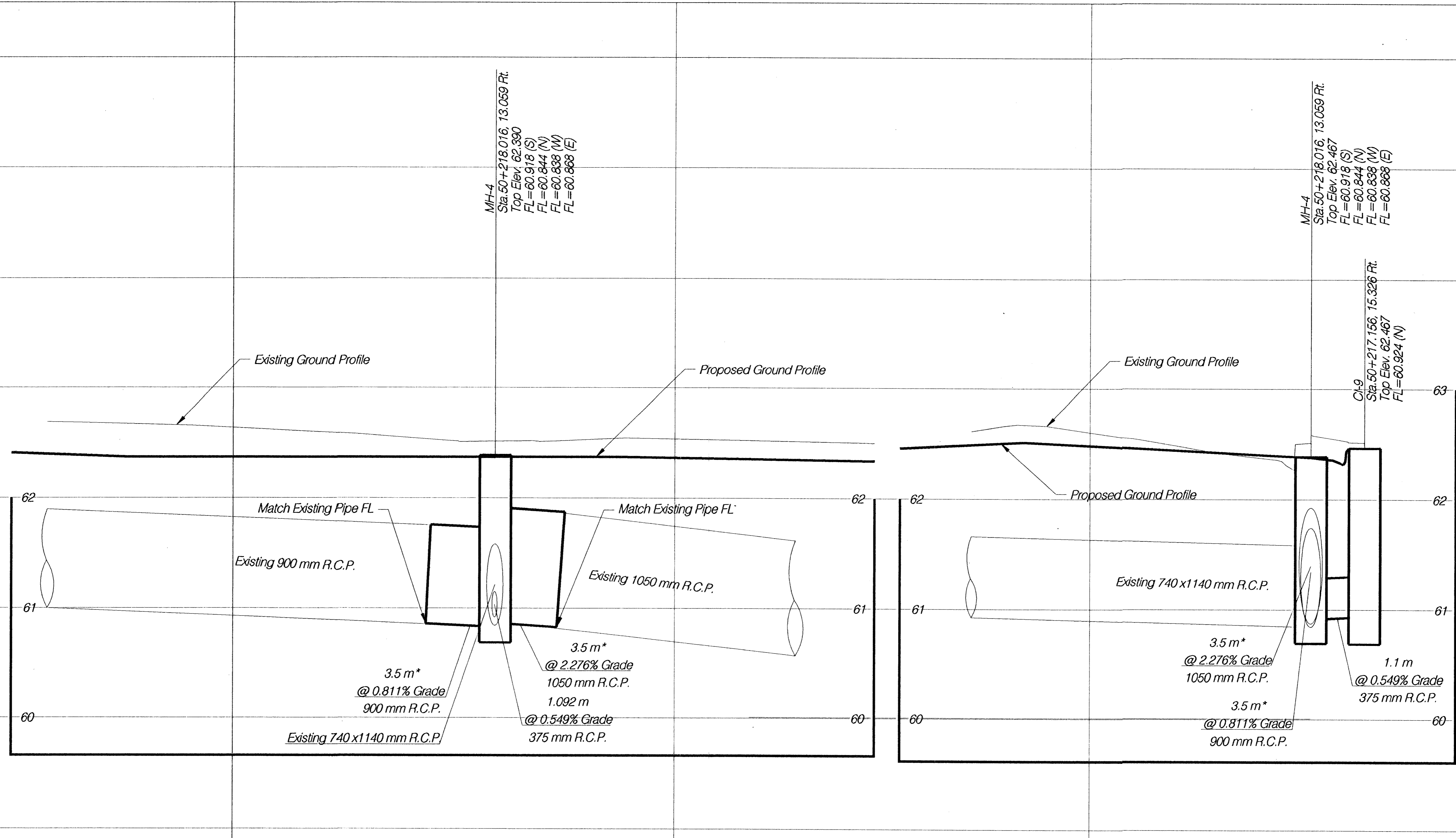


HORIZONTAL SCALE 1:100
VERTICAL SCALE 1:5

FHWA REG NO.	STATE	PROJECT NO.	YEAR	SHEET NO.	TOTAL SHEETS
7	KANSAS	87 N-0199-01	2002	103	158

FED. AID NO. - CMQ-N019(901)



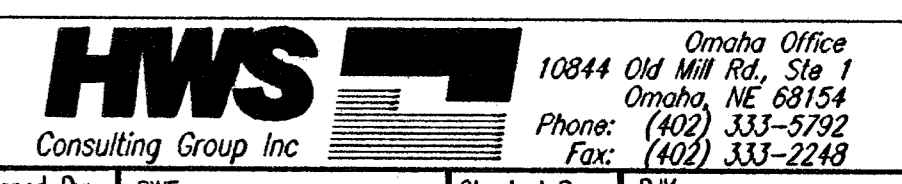
MH-4
Sta. 50+218.016, 13.059 Ft.
Top Elev. 62.380
FL=60.918 (S)
FL=60.844 (N)
FL=60.838 (W)
FL=60.868 (E)

MH-4
Sta. 50+218.016, 13.059 Ft.
Top Elev. 62.467
FL=60.918 (S)
FL=60.844 (N)
FL=60.838 (W)
FL=60.868 (E)

CH-9
Sta. 50+217.156, 15.326 Ft.
Top Elev. 62.467
FL=60.924 (N)

* PIPE LENGTH IS APPROXIMATE. EXISTING PIPE SHALL BE REMOVED TO NEAREST JOINT AND EXTENDED WITH NEW RCP TO INLET

**N 21st STREET
PIPE PROFILES**



Designed By:	BWE	Checked By:	RJK
Drawn By:	HIS	Date:	03-25-2002

Job No. 55-70-2003