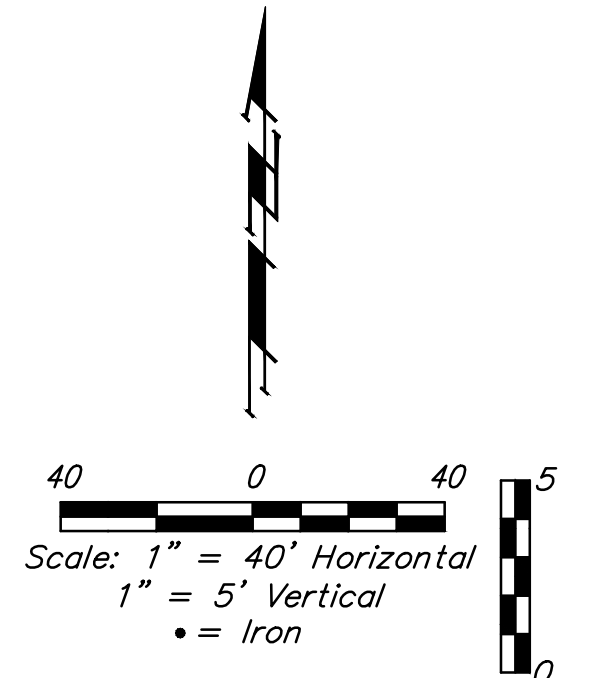
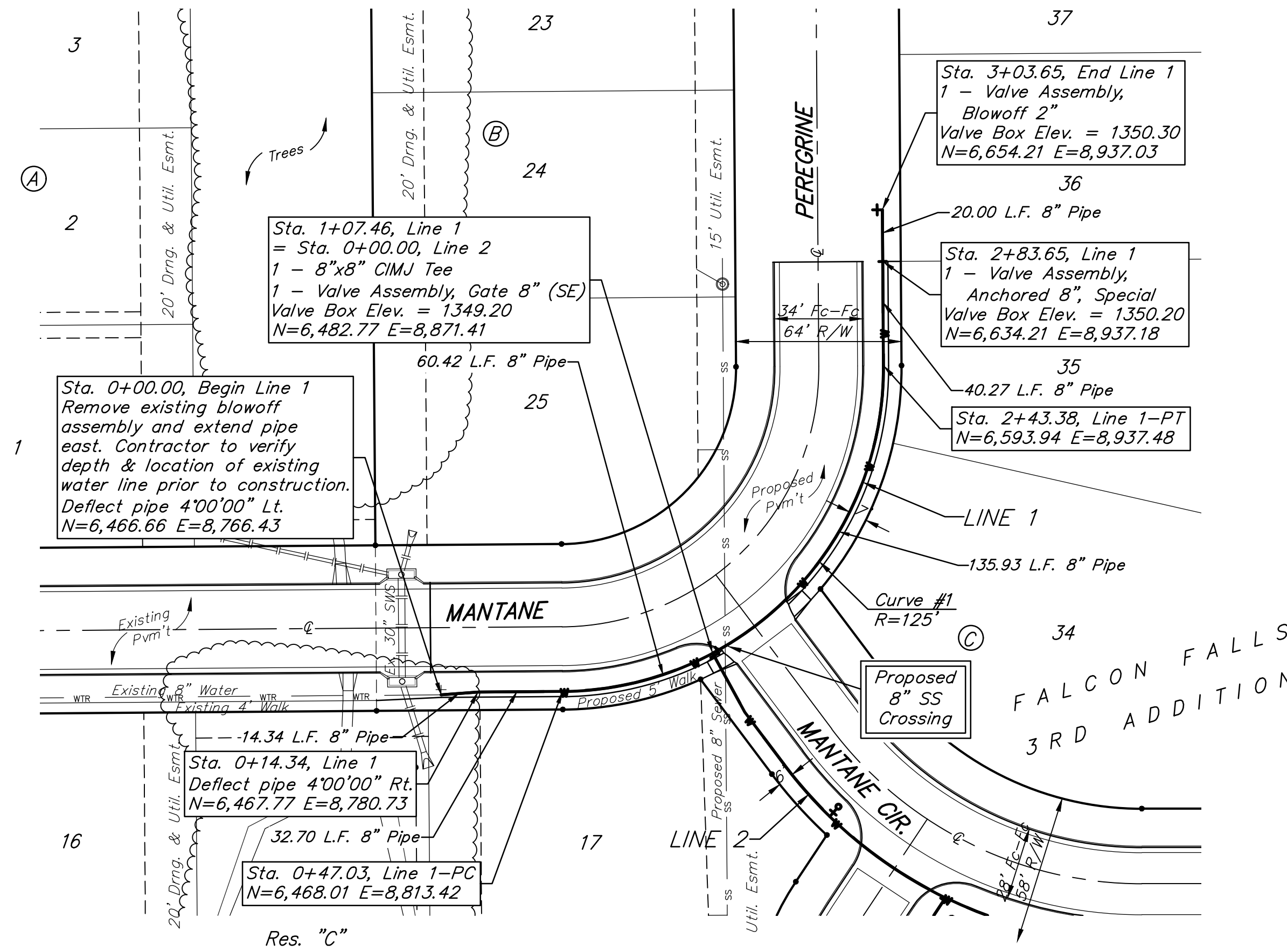


BENCHMARKS:
 BM #1: Benchmark on top of north 48" headwall in Reserve "B" between Lots 18-19, Block B, Falcon Falls 3rd Addition. Elev. = 1349.35 NGVD29

BM #2: Benchmark on top of north 48" headwall in Reserve "C" north of the NE corner of Lots 30, Block C, Falcon Falls 3rd Addition. Elev. = 1343.63 NGVD29

For radii under 300', contractor shall use short pipe lengths.

Curve #1				
Curve Data Based on Waterline				
Rad. = 125'		Delta = 90° 00' 00"		Tangent = 125.00'
Arc = 196.35'		L.C. = 176.78'		Def./Ft. = 13.75095 Min.
Station	Arc	Chord Lengths	Defl.	Total Defl.
0+47.03	-	-	0° 00' 00"	0° 00' 00"
0+50.00	2.97'	3.11'	0° 40' 50"	0° 40' 50"
0+75.00	25.00'	26.16'	5° 43' 47"	6° 24' 37"
1+00.00	25.00'	26.16'	5° 43' 46"	12° 08' 23"
1+07.46	7.46'	7.82'	1° 42' 35"	13° 50' 58"
1+25.00	17.54'	18.37'	4° 01' 12"	17° 52' 10"
1+50.00	25.00'	26.16'	5° 43' 46"	23° 35' 56"
1+75.00	25.00'	26.16'	5° 43' 47"	29° 19' 43"
2+00.00	25.00'	26.16'	5° 43' 46"	35° 03' 29"
2+25.00	25.00'	26.16'	5° 43' 46"	40° 47' 15"
2+43.38	18.38'	19.24'	4° 12' 45"	45° 00' 00"



DEPTH UNKNOWN
 Contractor to Verify
 Depth & Location of
 Existing Water Line
 Prior to Construction.

