

BENCHMARKS:
 BM #1: Benchmark on top of north 48" headwall in Reserve "B" between Lots 18-19, Block B, Falcon Falls 3rd Addition. Elev. = 1349.35 NGVD29

BM #2: Benchmark on top of north 48" headwall in Reserve "C" north of the NE corner of Lots 30, Block C, Falcon Falls 3rd Addition. Elev. = 1343.63 NGVD29

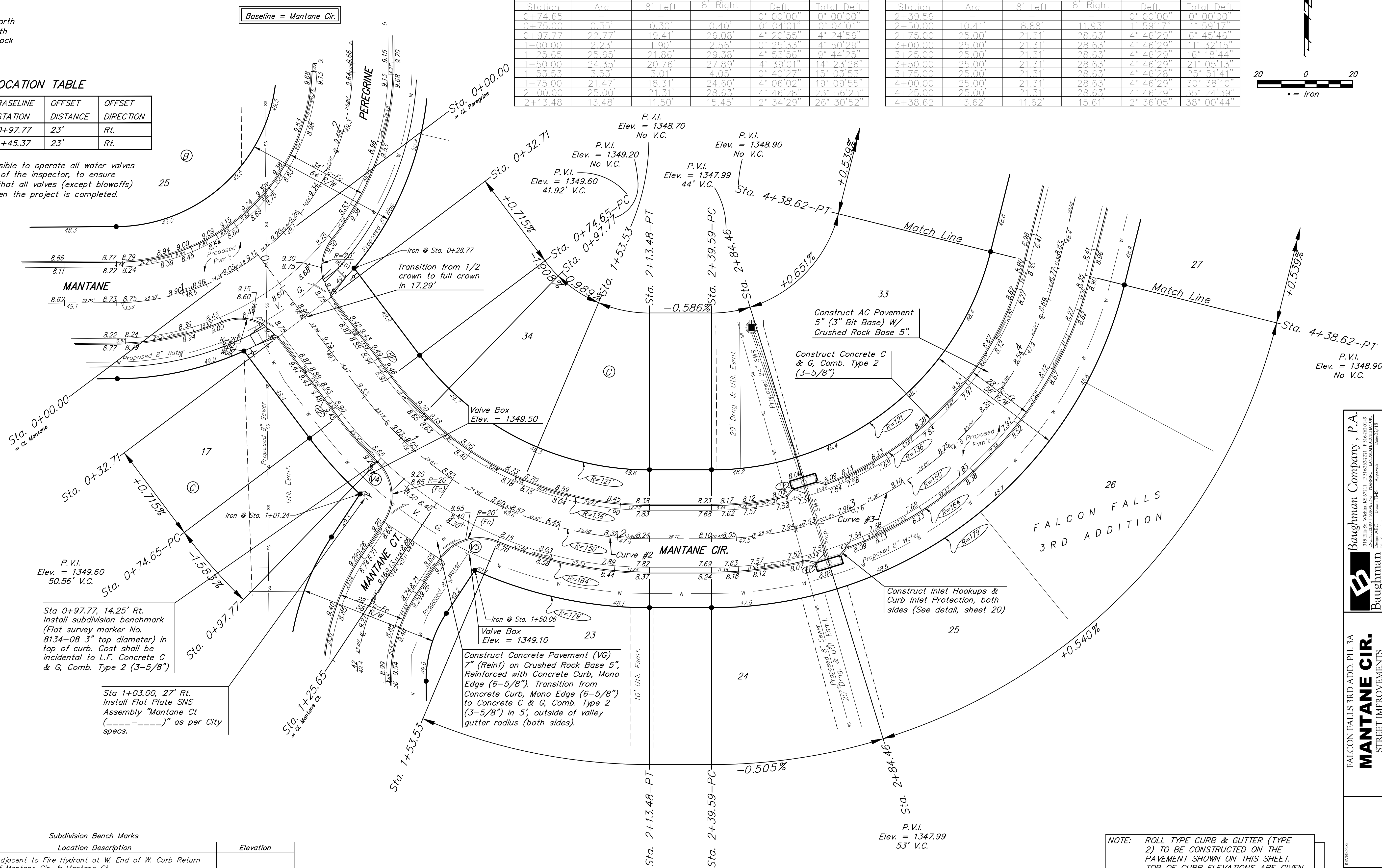
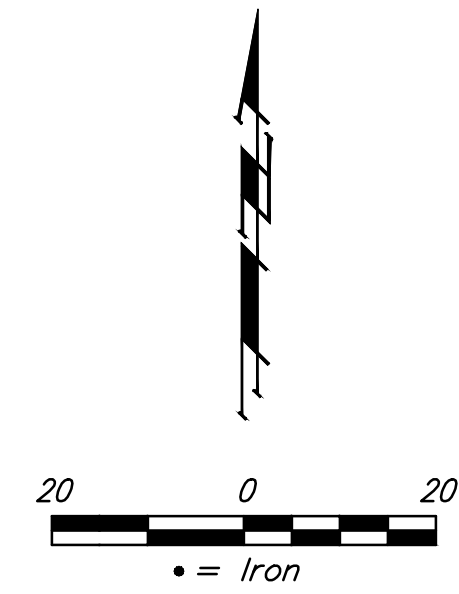
WATER VALVE LOCATION TABLE

VALVE NUMBER	STREET	BASILINE STATION	OFFSET DISTANCE	OFFSET DIRECTION
V4	Mantane Cir.	0+97.77	23'	Rt.
V5	Mantane Cir.	1+45.37	23'	Rt.

Paving contractor will be responsible to operate all water valves on the project, in the presence of the inspector, to ensure accessibility to the valves, and that all valves (except blowoffs) are left in the "ON" position when the project is completed.

Curve #2					
Curve Data Based on Centerline					
Rad. = 150'		Delta = 53° 01' 43"		Tangent = 74.83'	
Arc = 138.83'		L.C. = 133.93'		Def./Ft. = 11.45904 Min.	
Station	Arc	8' Left	8' Right	Defl.	Total Defl.
0+74.65	-	-	-	0° 00' 00"	0° 00' 00"
0+75.00	0.35'	0.30'	0.40'	0° 04' 01"	0° 04' 01"
0+97.77	22.77'	19.41'	26.08'	4° 20' 55"	4° 24' 56"
1+00.00	2.23'	1.90'	2.56'	0° 25' 33"	4° 50' 29"
1+25.65	25.65'	21.86'	29.38'	4° 53' 56"	9° 44' 25"
1+50.00	24.35'	20.76'	27.89'	4° 39' 01"	14° 23' 26"
1+53.53	3.53'	3.01'	4.05'	0° 40' 27"	15° 03' 53"
1+75.00	21.47'	18.31'	24.60'	4° 06' 02"	19° 09' 55"
2+00.00	25.00'	21.31'	28.63'	4° 46' 28"	23° 56' 23"
2+13.48	13.48'	11.50'	15.45'	2° 34' 29"	26° 30' 52"

Curve #3					
Curve Data Based on Centerline					
Rad. = 150'		Delta = 76° 01' 27"		Tangent = 117.24'	
Arc = 199.03'		L.C. = 184.75'		Def./Ft. = 11.45920 Min.	
Station	Arc	8' Left	8' Right	Defl.	Total Defl.
2+39.59	-	-	-	0° 00' 00"	0° 00' 00"
2+50.00	10.41'	8.88'	11.93'	1° 59' 17"	1° 59' 17"
2+75.00	25.00'	21.31'	28.63'	4° 46' 29"	6° 45' 46"
3+00.00	25.00'	21.31'	28.63'	4° 46' 29"	11° 32' 15"
3+25.00	25.00'	21.31'	28.63'	4° 46' 29"	16° 18' 44"
3+50.00	25.00'	21.31'	28.63'	4° 46' 29"	21° 05' 13"
3+75.00	25.00'	21.31'	28.63'	4° 46' 28"	25° 51' 41"
4+00.00	25.00'	21.31'	28.63'	4° 46' 29"	30° 38' 10"
4+25.00	25.00'	21.31'	28.63'	4° 46' 29"	35° 24' 39"
4+38.62	13.62'	11.62'	15.61'	2° 36' 05"	38° 00' 44"



Sta 0+97.77, 14.25' Rt.
 Install subdivision benchmark (Flat survey marker No. 8134-08 3" top diameter) in top of curb. Cost shall be incidental to L.F. Concrete C & G, Comb. Type 2 (3-5/8")

Sta 1+03.00, 27' Rt.
 Install Flat Plate SNS Assembly "Mantane Ct" (---) as per City specs.

Construct Concrete Pavement (VG) 7" (Reint) on Crushed Rock Base 5", Reinforced with Concrete Curb, Mono Edge (6-5/8"). Transition from Concrete Curb, Mono Edge (6-5/8") to Concrete C & G, Comb. Type 2 (3-5/8") in 5', outside of valley gutter radius (both sides).

Construct AC Pavement 5" (3" Bit Base) W/ Crushed Rock Base 5".
 Construct Concrete C & G, Comb. Type 2 (3-5/8")

Construct Inlet Hookups & Curb Inlet Protection, both sides (See detail, sheet 20)

Subdivision Bench Marks		
Street & Station	Location Description	Elevation
Mantane Cir. 0+97.77, 14.25' Rt.	Adjacent to Fire Hydrant at W. End of W. Curb Return of Mantane Cir. & Mantane Ct.	

NOTE: ROLL TYPE CURB & GUTTER (TYPE 2) TO BE CONSTRUCTED ON THE PAVEMENT SHOWN ON THIS SHEET. TOP OF CURB ELEVATIONS ARE GIVEN FOR FULL HEIGHT CURB (TYPE 4).

P.A. Baughman Company, P.A.
 ENGINEERING, ARCHITECTURE, PLANNING, LANDSCAPE ARCHITECTURE
 1000 W. 10th St., Suite 200, Phoenix, AZ 85003
 (602) 258-8800
 www.baughman.com

FALCON FALLS 3RD ADD. PH. 3A
MANTANE CIR.
 STREET IMPROVEMENTS

SHEET **3**
 OF **31**