

STATE	PROJECT NO.	YEAR	SHEET NO.	TOTAL SHEETS
KANSAS	87 N-0287-01	2003	1	107

STATE OF KANSAS

DEPARTMENT OF TRANSPORTATION



PLAN AND PROFILE OF PROPOSED  
29TH. STREET NORTH FROM  
ROCK ROAD TO WEBB ROAD  
KDOT PROJECT NO. 87 N-0287-01

F.A. NO. STP-N028 (701)

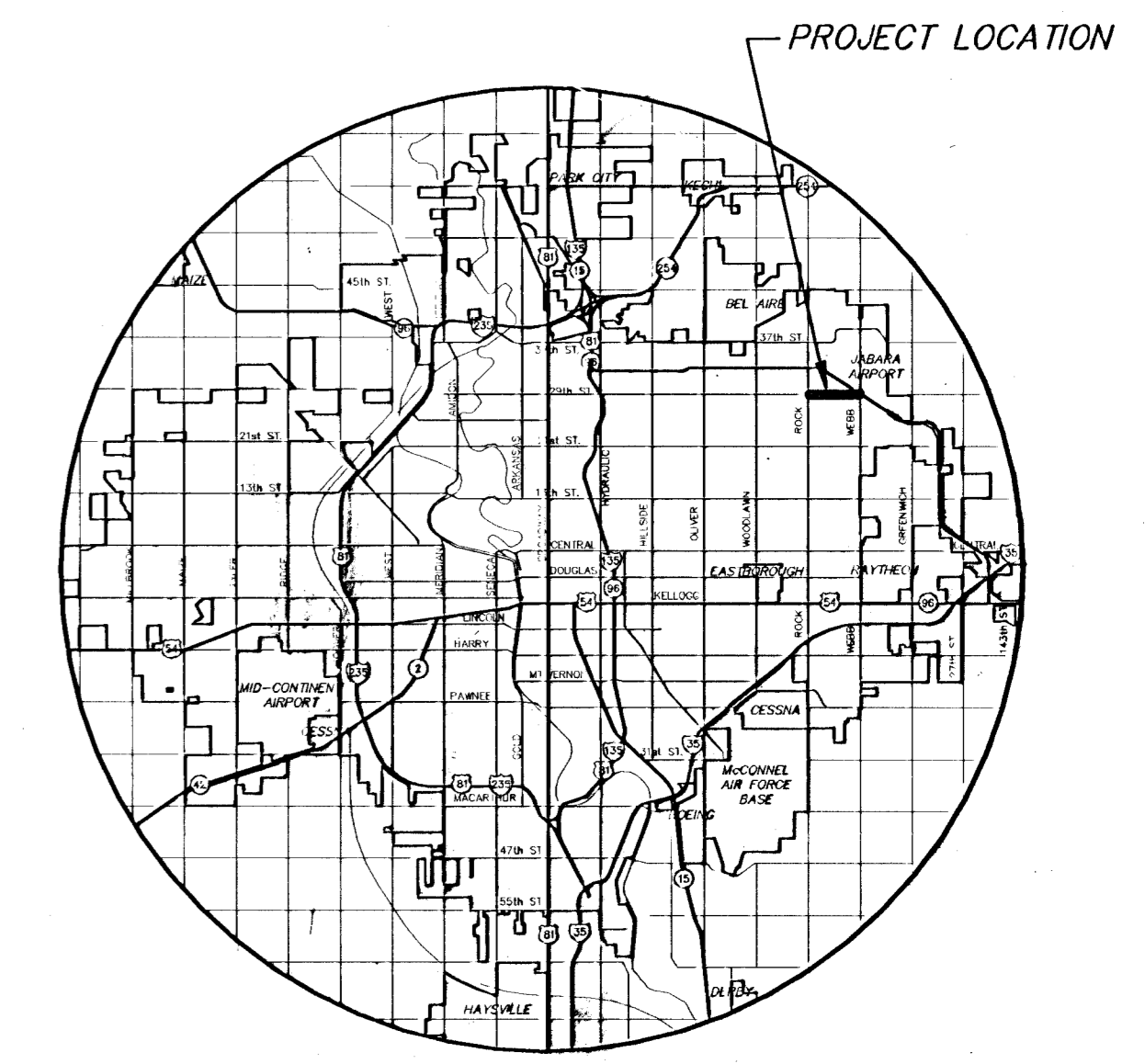
- GRADING
- SURFACING
- STORM SEWER
- SIGNALIZATION
- PAVEMENT MARKING

INDEX OF SHEETS

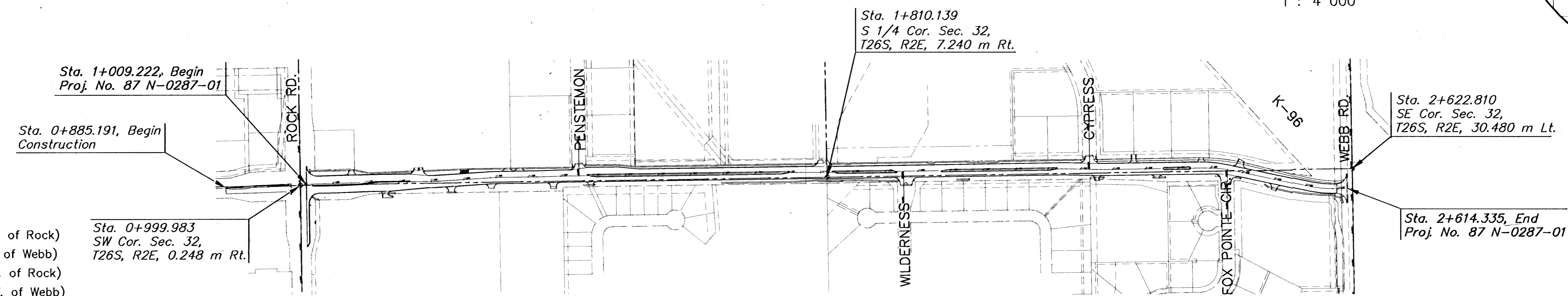
SHEET NO.	DESCRIPTION
1	Title Sheet
2	General Notes
3-6	Typical Section
7-31	Plan and Profile
32	Misc. Profiles
33-35	Paving Details
36-46	Storm Sewer Details
47	RCB Details
48	Misc. Details
49	Summary of Quantities
50-53	Temporary Project Water Pollution Control
54	Seeding
55-64	Traffic Signalization
65-69	Pavement Marking & Signing
70	Construction Staging Sequence
71-84	Traffic Control
85	Drainage Map
86-107	Cross Sections

SURVEYED
PLOTTED
INKED
DESIGNED
SQUAD

FEDERAL AID PROJECT  
WICHITA, SEDGWICK COUNTY  
POPULATION 329,211  
CITY OF WICHITA PROJ. NO. 472-83519  
CITY OF WICHITA O.C.A. NO. 706841



LOCATION MAP



DESIGN DESIGNATION

AADT (2002)	=	11,447 (E. of Rock)
		7,142 (W. of Webb)
AADT (2030)	=	15,000 (E. of Rock)
		16,500 (W. of Webb)
DHV	=	9%
T	=	2%
V	=	60 km/hr
Control of Access	=	NONE
Clear Zone	=	2 m

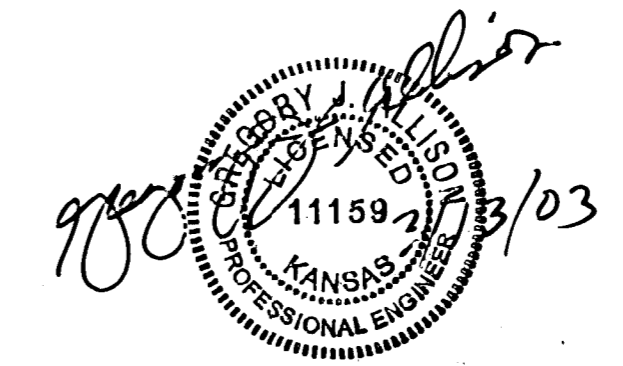
Sta. 0+999.983  
SW Cor. Sec. 32,  
T26S, R2E, 0.248 m Rt.

NOTE: TRAFFIC TO BE CARRIED THROUGH CONSTRUCTION

CONVENTIONAL SIGNS

COUNTY LINE	-----	CENTER LINE OF PROJECT	4+000 +100
CITY LIMITS	=====	TERRACE	-----
STATE OR NATIONAL LINE	-----	CULVERTS	-----
TOWNSHIP, SECTION or GRANT LINE	-----	DROP INLET & STORM SEWER	-----
PROPERTY LINE	-----	ACCESS CONTROL	-----
HIGHWAY FENCE	-----	POWER POLE	-----
EXISTING FENCE	-----	TELEPHONE POLE	-----
GUARD FENCE	-----	MARSH	-----
CONSTRUCTION LIMITS	-----	HEDGE	-----
RIGHT OF WAY LINE	-----	TREES	-----
TRAVELED WAY	-----	PROFILE ELEVATION	452.5 +500
RAILROADS	-----	STREAM or CREEK	-----

GROSS LENGTH OF PROJECT	1605.113 m
EXCEPTIONS	0.000 m
NET LENGTH OF PROJECT	1605.113 m
NET LENGTH OF BRIDGES	0.000 m
NET LENGTH OF ROAD	1605.113 m



KDOT METRIC

PREPARED & SUBMITTED BY

MKEC ENGINEERING CONSULTANTS, INC.  
WICHITA, KANSAS

All Dimensions shown, without a SI suffix, are in millimeters. All elevations shown are in meters.

RECOM. FOR APPROVAL-DATE

CHIEF, BUREAU OF LOCAL PROJECTS  
KANSAS DEPARTMENT OF TRANSPORTATION

APPROVED - DATE

NEIL D. CABLE, P.E.  
CITY ENGINEER  
PROJECT NO. 87 N-0287-01

STATE TRANSPORTATION ENGINEER  
KANSAS DEPARTMENT OF TRANSPORTATION