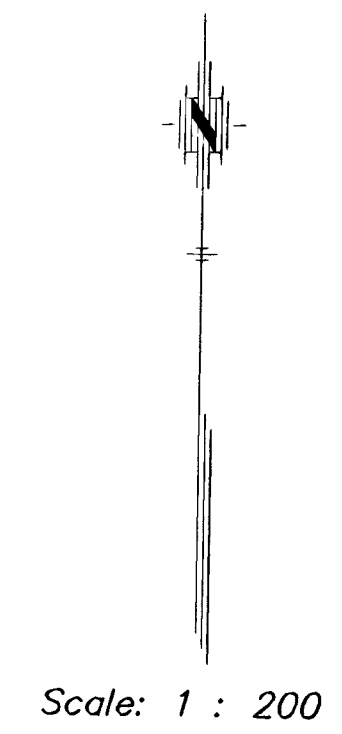
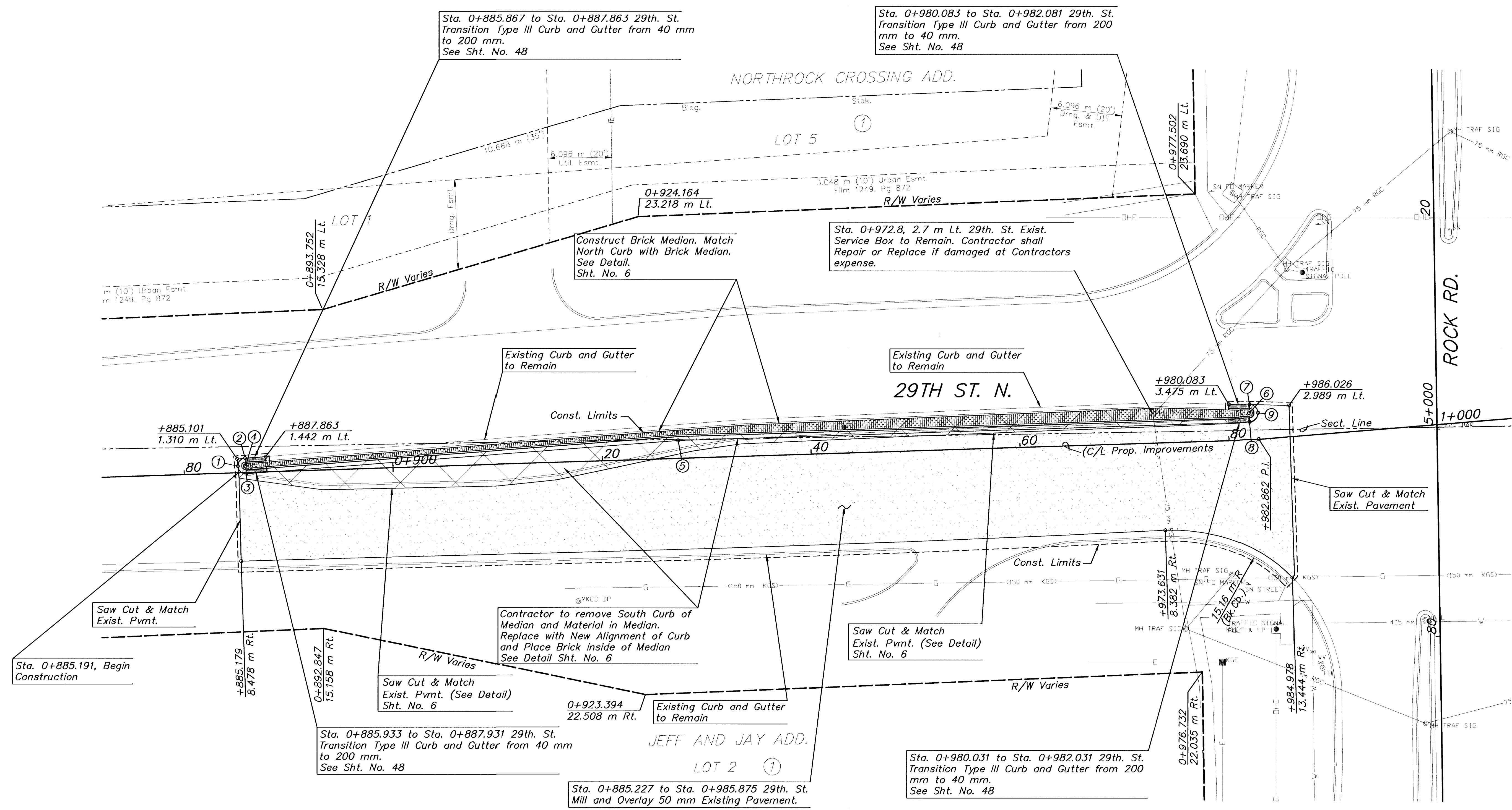


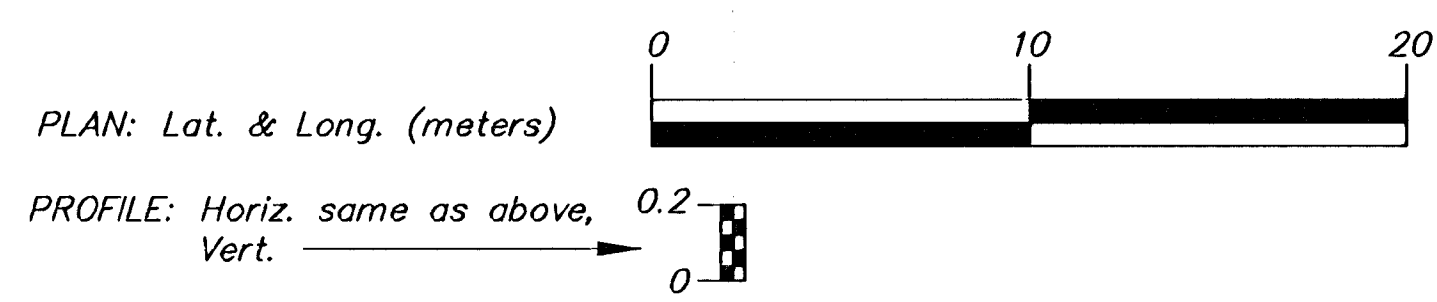
P.I. Sta. 0+982.862
1. N=519671.9238, E=510686.5719

STATE	PROJECT NO.	YEAR	SHEET NO	TOTAL SHEETS
KANSAS	87 N-0287-01	2003	7	107

DATE	
BY	
REFERENCES NOTED	
REFERENCES CHECKED	



SCALE



PLAN: Lat. & Long. (meters)

PROFILE: Horiz. same as above, Vert. 0.2

- SW Cor. Sec. 32, T26S, R2E
Sta. 0+999.983, 0.248 m Rt.
1. 10 mm bar in Thimble
 2. Nail & Shiner in Median 18.495 m N
 3. Nail & Shiner in Median 18.328 m W
 4. Nail & Shiner in Median 18.446 m S
 5. N=519673.096, E=510703.654

UTILITIES

- E - Weststar Energy (Electric) 261-6512
- G - Farmland Industries (Gas) 1-918-333-4111
- G - Kansas Gas Service (Gas) 832-3101
- G - Williams Pipeline (Gas) 529-6601
- SWS - City of Wichita Stormwater Utility 268-4071
- SS & W - City of Wichita Water Dept. 262-6000
- CATV - Cox Communications (Cable) 262-0661
- T - SBC (Telephone) 800-870-8390

LEGEND

- Pavement Removal
- 50 mm Pavement Milling and Overlay

MEDIAN LOCATION

Point No.	Station	Offset m
1	0+885.150	0.589 Lt.
2	0+885.867	1.371 Lt.
3	0+885.933	0.127 Rt.
4	0+885.900	0.622 Lt.
5	0+927.306	1.700 Lt.
6	0+982.031	2.531 Lt.
7	0+982.081	3.361 Lt.
8	0+982.031	1.700 Lt.
9	0+982.991	2.528 Lt.

PROJECT SURVEY CONTROL

Elevations are in City of Wichita Datum. (Metric)
Datum Bench = COW Bench Mark. SE cor. intersection on traffic signal pole base. Elev.=65.901

2				
1				
NO.	DATE	REVISIONS	BY	APP'D
KANSAS DEPARTMENT OF TRANSPORTATION				
29TH STREET NORTH				
STA. 0+885 TO STA. 1+000				
PROJ. NO. 87 N-0287-01			SEDGWICK CO.	
MKEC ENGINEERING CONSULTANTS, INC.				
WICHITA, KANSAS				
DESIGNED BY:	ASH	CHECKED BY:	GJA	
DRAWN BY:	WNJ	DATE:	Jan. 2003	SHEET 7 OF 107