

DATE	
BY	
REFERENCES NOTED	
REFERENCES CHECKED	

P.I. Sta. 0+982.862  
1. N=519671.9238, E=510686.5719

P.I. Sta. 1+018.342  
1. N=519674.8647, E=510721.9295

P.I. Sta. 1+078.442  
1. N=519676.8103, E=510781.9983

STATE	PROJECT NO.	YEAR	SHEET NO.	TOTAL SHEETS
KANSAS	87 N-0287-01	2003	8	107

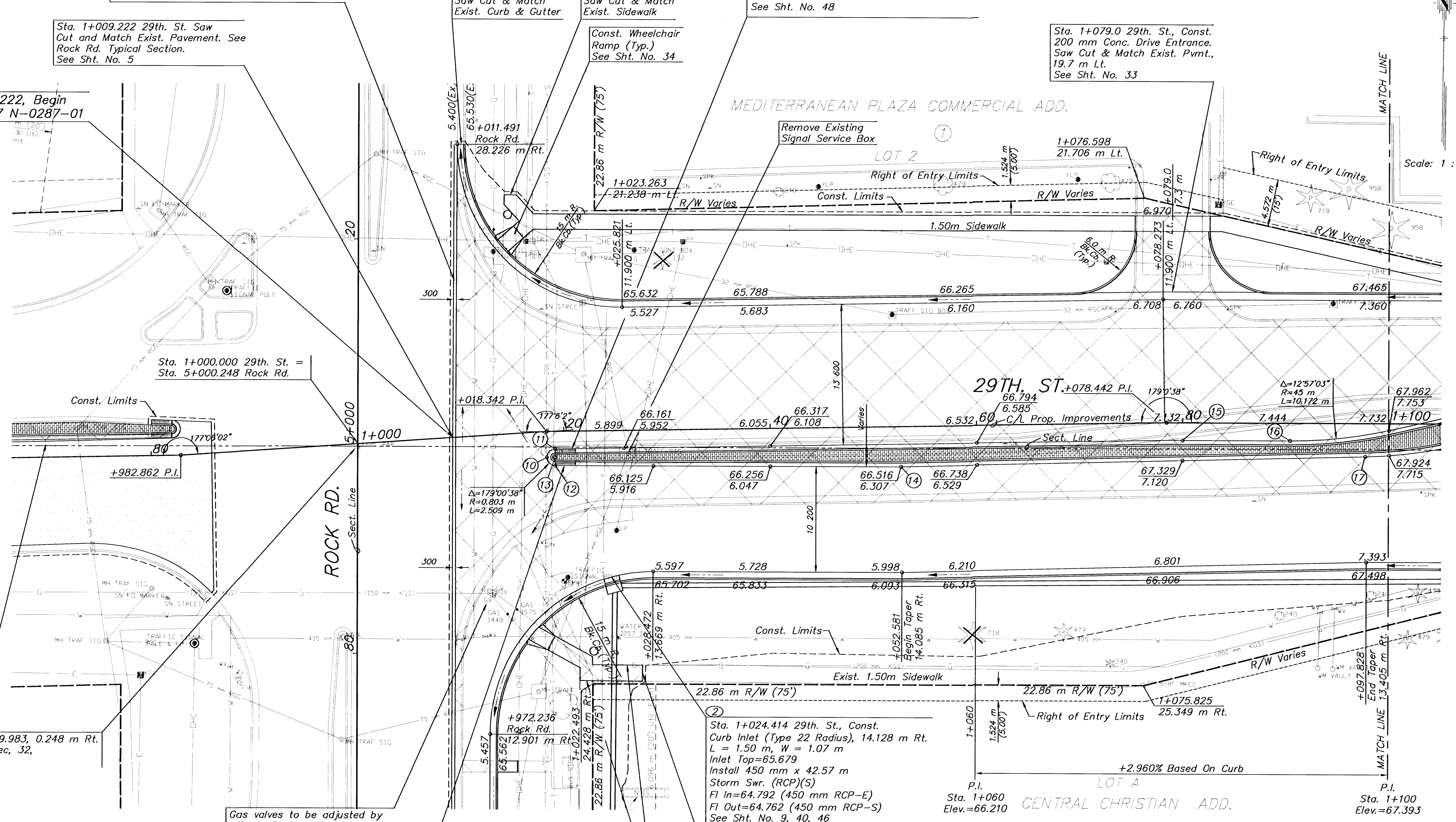
Sta. 4+905.716 to Sta. 5+011.491 Rock Rd.  
Mill and Overlay 300 mm width x 50 mm  
depth Existing Pavement.  
See Sht. No. 5

Sta. 1+009.222 29th. St. Saw  
Cut and Match Exist. Pavement. See  
Rock Rd. Typical Section.  
See Sht. No. 5

Sta. 1+009.222, Begin  
Proj. No. 87 N-0287-01

Sta. 1+019.145 to Sta. 1+021.131 29th. St.  
Transition Type III Curb and Gutter from  
40 mm to 200 mm.  
See Sht. No. 48

Sta. 1+079.0 29th. St., Const.  
200 mm Conc. Drive Entrance.  
Saw Cut & Match Exist. Pvrnt.,  
19.7 m Lt.  
See Sht. No. 33



Scale: 1 : 200

**LEGEND**

- Pavement Removal
- 50 mm Pavement Milling and Overlay

**UTILITIES**

- E - Weststar Energy (Electric) 261-6512
- G - Farmland Industries (Gas) 1-918-333-4111
- G - Kansas Gas Service (Gas) 832-3101
- G - Williams Pipeline (Gas) 529-6601
- SWS - City of Wichita Stormwater Utility 268-4071
- SS & W - City of Wichita Water Dept. 262-6000
- CATV - Cox Communications (Cable) 262-0661
- T - SBC (Telephone) 800-870-8390

- SW Cor. Sec. 32, T26S, R2E
- Sta. 0+999.983, 0.248 m Rt.
- 1. Fnd. 10 mm bar in thimble
- 2. Nail & Shiner in Median 18.495 m N
- 3. Nail & Shiner in Median 18.328 m W
- 4. Nail & Shiner in Median 18.446 m S
- 5. N=519673.096, E=510703.654

Gas valves to be adjusted by  
others. Contact Kansas Gas  
Service 2 weeks in advance to  
coordinate and schedule the  
adjustment of (3) Gate Valves.

Sta. 1+019.131 to Sta. 1+021.131 29th. St.  
Transition Type III Curb and Gutter from  
40 mm to 200 mm.  
See Sht. No. 48

BM #1 COW Benchmark. SE Cor. of Intersection  
on Traffic Signal Pole Base  
Sta. 1+019.831, 14.482 m Rt. Elev.=65.901

CAUTION!!!  
200 mm Gas Line

UTILITY ADJUSTMENTS				
Station	Offset m	Elevation		Remarks
		Existing	Proposed	
1+008.6	19.5 Rt.	65.543	65.556	Water Valve
1+011.1	19.4 Rt.	65.786	65.557	Water Valve
1+011.9	15.3 Rt.	65.823	65.612	Gas Valve
1+012.1	15.0 Rt.	65.730	65.614	Gas Valve
1+012.4	15.3 Rt.	65.736	65.609	Gas Valve

MEDIAN LOCATION				
Point No.	Station	Offset m	Elevation High Edge	Elevation Top Curb
10	1+018.215	2.500 Rt.	65.957	66.166
11	1+019.145	1.700 Rt.	65.932	66.141
12	1+019.131	3.306 Rt.	65.882	66.091
13	1+019.145	2.503 Rt.		Radius Point
14	1+052.630	3.885 Rt.	66.307	66.516
15	1+078.155	1.700 Rt.	67.185	67.394
16	1+090.405	1.705 Rt.	67.497	67.706
17	1+097.701	3.205 Rt.	67.648	67.857

NO.	DATE	REVISIONS	BY	APP'D

KANSAS DEPARTMENT OF TRANSPORTATION

29TH. STREET NORTH  
STA. 1+000 TO STA. 1+100

PROJ. NO. 87 N-0287-01 SEDGWICK CO.

MKEE ENGINEERING CONSULTANTS, INC.  
WICHITA, KANSAS

DESIGNED BY: ASH CHECKED BY: GJA  
DRAWN BY: WNJ DATE: Jan. 2003 SHEET 8 OF 107