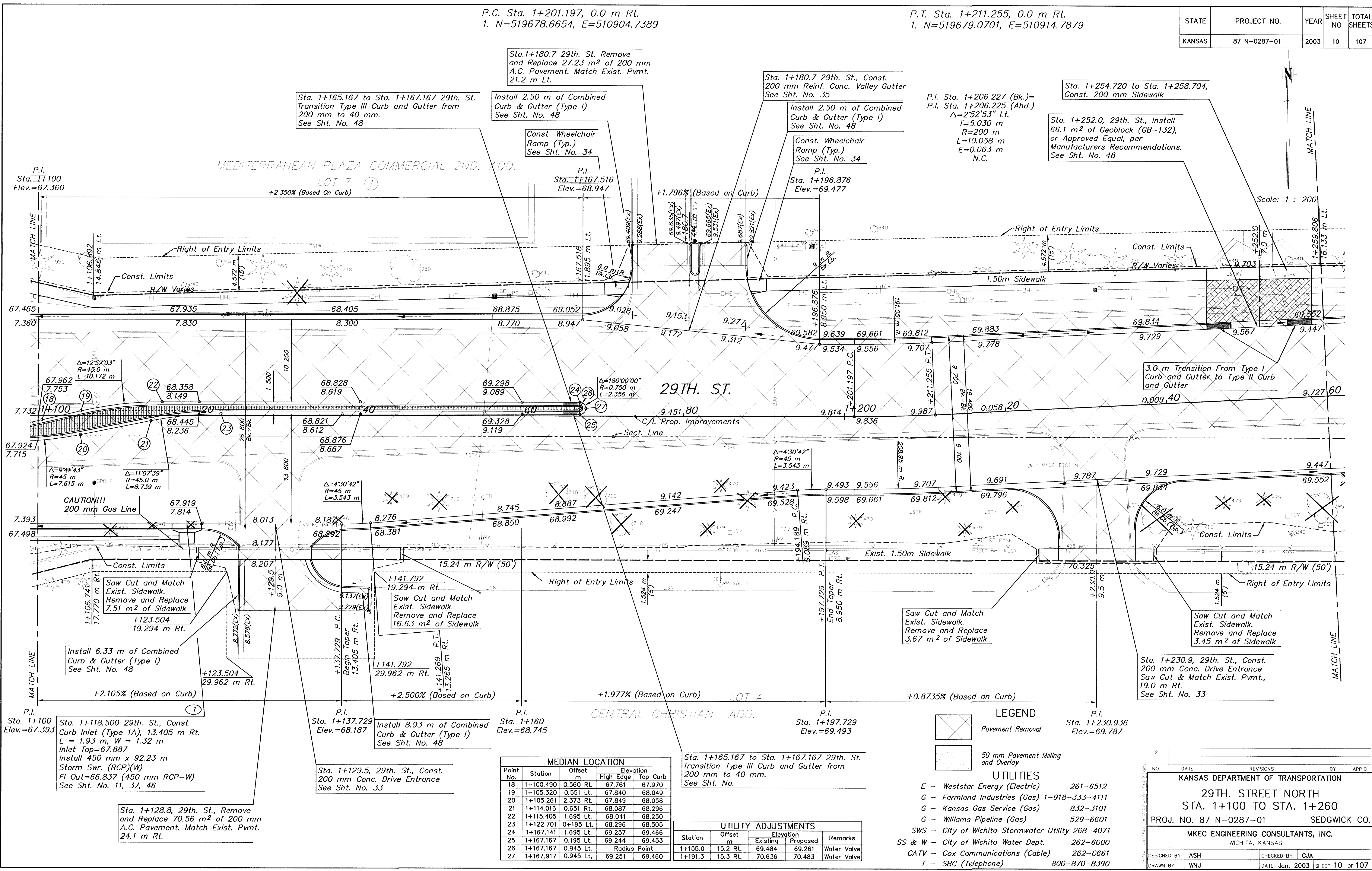


P.C. Sta. 1+201.197, 0.0 m Rt.
1. N=519678.6654, E=510904.7389

P.T. Sta. 1+211.255, 0.0 m Rt.
1. N=519679.0701, E=510914.7879

STATE	PROJECT NO.	YEAR	SHEET NO.	TOTAL SHEETS
KANSAS	87 N-0287-01	2003	10	107

DATE	
BY	
REFERENCES NOTED	
REFERENCES CHECKED	



Point No.	Station	Offset	Elevation	
			High Edge	Top Curb
18	1+100.490	0.560 Rt.	67.761	67.970
19	1+105.320	0.551 Lt.	67.840	68.049
20	1+105.261	2.373 Rt.	67.849	68.058
21	1+114.016	0.651 Rt.	68.087	68.296
22	1+115.405	1.695 Lt.	68.041	68.250
23	1+122.701	0+195 Lt.	68.296	68.505
24	1+167.141	1.695 Lt.	69.257	69.466
25	1+167.167	0.195 Lt.	69.244	69.453
26	1+167.167	0.945 Lt.	Radius Point	
27	1+167.917	0.945 Lt.	69.251	69.460

Station	Offset	Elevation		Remarks
		Existing	Proposed	
1+155.0	15.2 Rt.	69.484	69.261	Water Valve
1+191.3	15.3 Rt.	70.636	70.483	Water Valve

- LEGEND**
- Pavement Removal
 - 50 mm Pavement Milling and Overlay
- UTILITIES**
- E - Weststar Energy (Electric) 261-6512
 - G - Farmland Industries (Gas) 1-918-333-4111
 - G - Kansas Gas Service (Gas) 832-3101
 - G - Williams Pipeline (Gas) 529-6601
 - SWS - City of Wichita Stormwater Utility 268-4071
 - SS & W - City of Wichita Water Dept. 262-6000
 - CATV - Cox Communications (Cable) 262-0661
 - T - SBC (Telephone) 800-870-8390

DESIGNED BY: ASH
DRAWN BY: WNJ

CHECKED BY: GJA
DATE: Jan. 2003

KANSAS DEPARTMENT OF TRANSPORTATION
29TH. STREET NORTH
STA. 1+100 TO STA. 1+260
PROJ. NO. 87 N-0287-01 SEDGWICK CO.
MKEC ENGINEERING CONSULTANTS, INC.
WICHITA, KANSAS

SHEET 10 OF 107