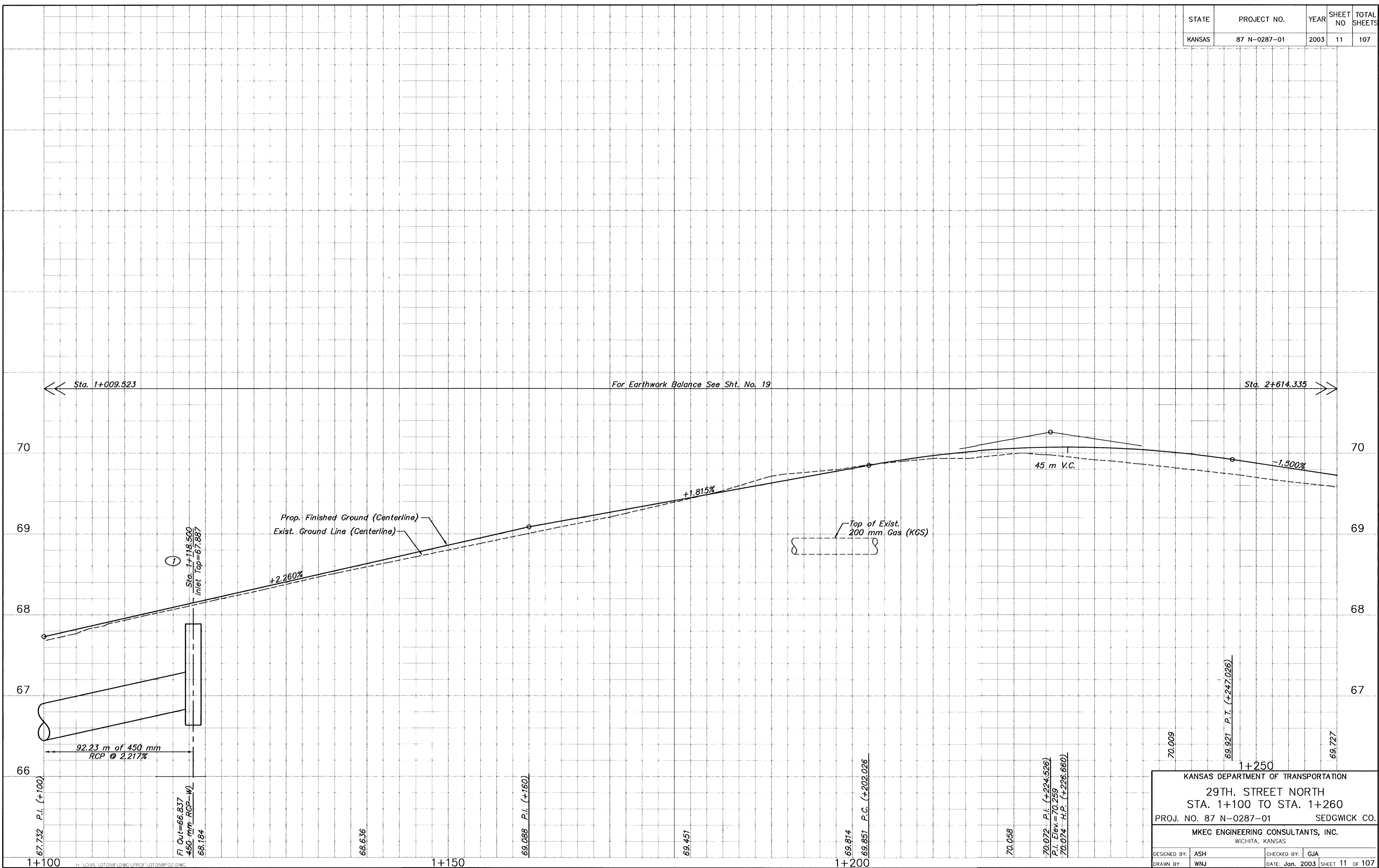


STATE	PROJECT NO.	YEAR	SHEET NO	TOTAL SHEETS
KANSAS	87 N-0287-01	2003	11	107



Sta. 1+009.523 ← For Earthwork Balance See Sht. No. 19 → Sta. 2+614.335

Prop. Finished Ground (Centerline)
Exist. Ground Line (Centerline)

Top of Exist. 200 mm Gas (KGS)

45 m V.C.

-1.500%

+2.260%

+1.815%

92.23 m of 450 mm RCP @ 2.217%

Sta. 1+118.500
Inlet Top = 67.887
FI Out = 66.837
450 mm RCP - W
68.184

68.636

69.088 P.I. (+160)

69.451

69.814
69.851 P.C. (+202.026)

70.058

70.072 P.I. (+224.528)
P.I. Elev. = 70.259
70.074 H.P. (+226.660)

70.009
69.921 P.T. (+247.026)

69.727

1+250

KANSAS DEPARTMENT OF TRANSPORTATION
29TH. STREET NORTH
STA. 1+100 TO STA. 1+260
PROJ. NO. 87 N-0287-01 SEDGWICK CO.

MKEC ENGINEERING CONSULTANTS, INC.
WICHITA, KANSAS

DESIGNED BY: ASH	CHECKED BY: CJA
DRAWN BY: WNJ	DATE: Jan. 2003 SHEET 11 OF 107