

P.C. Sta. 1+291.309, 0.0 m Rt.  
1. N=5196684.302, E=510994.670

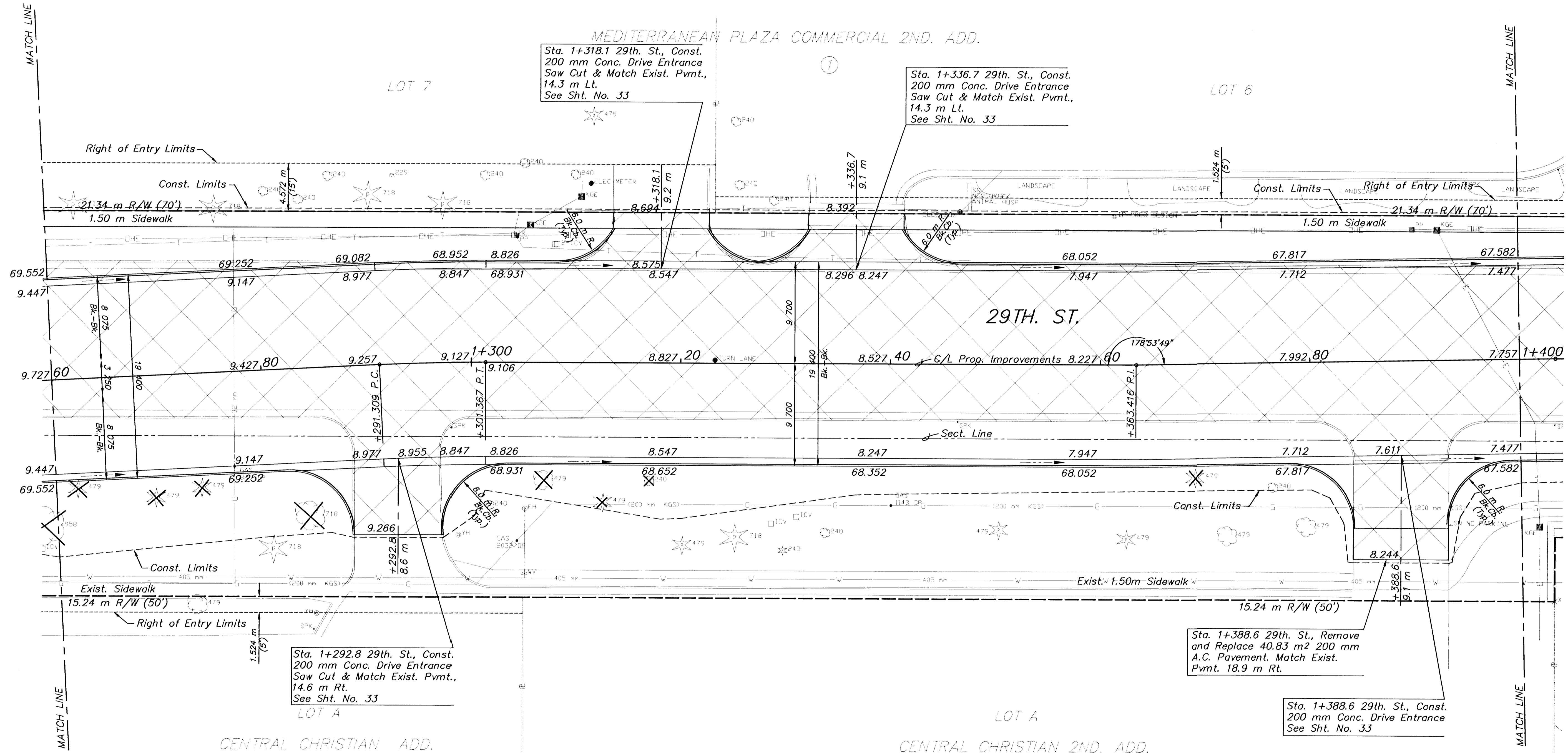
P.T. Sta. 1+301.367, 0.0 m Rt.  
1. N=5196684.707, E=511004.719

P.I. Sta. 1+363.416, 0.0 m Rt.  
1. N=519685.6446, E=511066.7616

P.I. Sta. 1+403.416, 0.0 m Rt.  
1. N=519687.0189, E=511106.7380

STATE	PROJECT NO.	YEAR	SHEET NO	TOTAL SHEETS
KANSAS	87 N-0287-01	2003	12	107

BY	DATE
REFERENCES NOTED	
REFERENCES CHECKED	



Scale: 1 : 200

- UTILITIES**
- E - Weststar Energy (Electric) 261-6512
  - G - Farmland Industries (Gas) 1-918-333-4111
  - G - Kansas Gas Service (Gas) 832-3101
  - G - Williams Pipeline (Gas) 529-6601
  - SWS - City of Wichita Stormwater Utility 268-4071
  - SS & W - City of Wichita Water Dept. 262-6000
  - CATV - Cox Communications (Cable) 262-0661
  - T - SBC (Telephone) 800-870-8390

P.I. Sta. 1+296.339 (Bk.)=  
P.I. Sta. 1+296.337 (Ahd.)  
Δ=2°52'53" Rt.  
T=5.030 m  
R=200 m  
L=10.058 m  
E=0.063 m  
N.C.

- LEGEND**
- Pavement Removal
  - 50 mm Pavement Milling and Overlay

NO.	DATE	REVISIONS	BY	APP'D
KANSAS DEPARTMENT OF TRANSPORTATION				
29TH. STREET NORTH				
STA. 1+260 TO STA. 1+400				
PROJ. NO. 87 N-0287-01			SEDGWICK CO.	
MKEC ENGINEERING CONSULTANTS, INC.				
WICHITA, KANSAS				
DESIGNED BY:	ASH	CHECKED BY:	GJA	
DRAWN BY:	WNJ	DATE:	Jan. 2003	SHEET 12 OF 107