

STATE	PROJECT NO.	YEAR	SHEET NO	TOTAL SHEETS
KANSAS	87 N-0287-01	2003	14	107

Sta. 1+413.200 29th. St. Remove Exist. Inlet.
 Const. Curb Inlet (Type 1), 8.950 m Lt.
 L = 1.93 m, W = 1.63 m
 Inlet Top=67.427
 Connect Exist 375 mm RCP to Inlet
 FI Out=65.699 (Exist. 375 mm RCP-NE)
 See Sht. No. 15, 36, 46

Sta. 1+428.471 29th. St. Const.
 200 mm Reinf. Conc. Valley
 Gutter. Saw Cut & Match Exist.
 Pvmt, 17.7 m Lt. See Hookup
 Detail.
 See Sht. No. 35, 48

Sta. 1+441.240 to Sta. 1+443.240 29th. St.
 Transition Type III Curb and Gutter from
 40 mm to 200 mm.
 See Sht. No. 48

Sta. 1+514.096 29th. St., Const.
 Curb Inlet (Type 1A), 9.445 m Lt.
 L = 1.93 m, W = 1.32 m
 Inlet Top = 66.534
 Install 450 mm x 7.04 m
 Storm Swr. (RCP)(NE)
 FI Out=65.203 (450 mm RCP-NE)
 See Sht. No. 15, 37, 46

Sta. 1+516.511 29th. St., Exist.
 Manhole, 18.941 m Lt.
 Exist. Manhole Top = 66.872
 Connect Prop. 450 mm RCP-SW to Exist.
 Manhole
 FI In=65.175 (450 mm RCP-SW)
 FI In=64.699 (Exist. 375 mm RCP-N)
 FI In=64.351 (Exist. 1050 mm RCP-W)
 FI Out=64.245 (Exist. 1050 mm RCP-E)
 See Sht. No. 15, 46

6 Saw Cut & Match
 Exist. Sidewalk.
 Remove and Replace
 4.97 m² of Sidewalk

Const. Wheelchair
 Ramp
 See Sht. No. 34

Const. Wheelchair
 Ramp
 See Sht. No. 34

Saw Cut & Match
 Exist. Sidewalk.
 Remove and Replace
 1.25 m² of Sidewalk

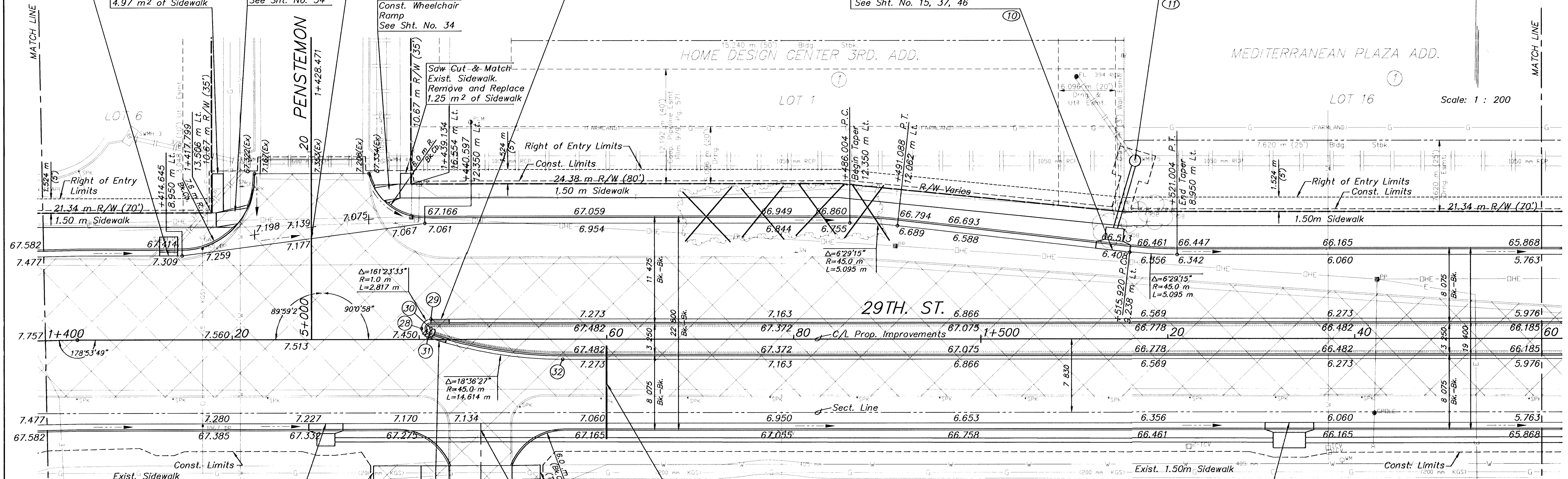
HOME DESIGN CENTER 3RD. ADD.

MEDITERRANEAN PLAZA ADD.

LOT 1

LOT 16

Scale: 1 : 200



DATE	BY	REFERENCES NOTED	REFERENCES CHECKED