

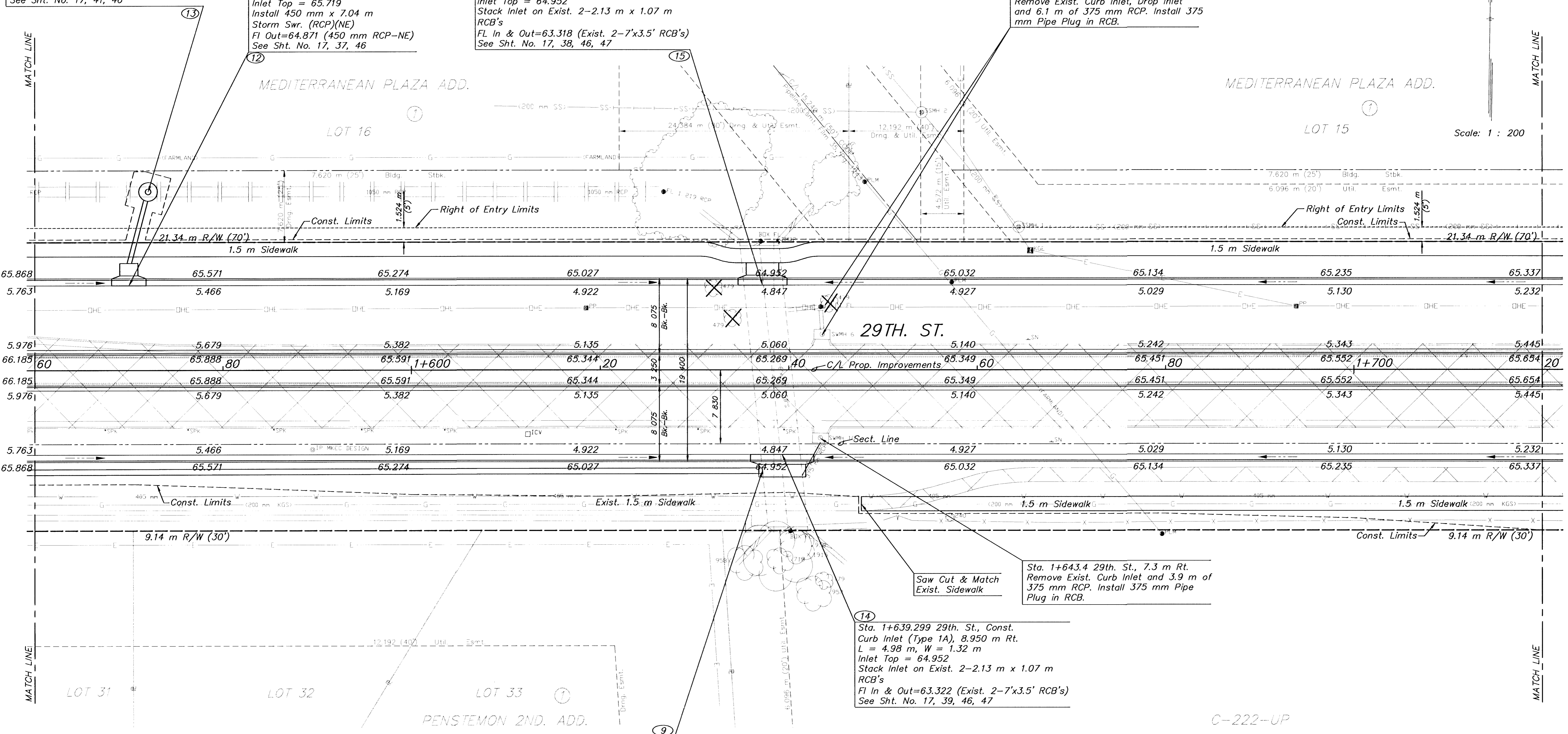
STATE	PROJECT NO.	YEAR	SHEET NO	TOTAL SHEETS
KANSAS	87 N-0287-01	2003	16	107

Sta. 1+572.047 29th. St., Const.  
 Std. Manhole (Precast), 18.889 m Lt.  
 Manhole Dia. = 1.98 m  
 Manhole Top = 66.414  
 Connect Exist. Storm Swr. to Manhole  
 FI In=64.843 (450 mm RCP-SW)  
 FI In=63.967 (Exist. 1050 mm RCP-W)  
 FI Out=63.967 (Exist. 1050 mm RCP-E)  
 See Sht. No. 17, 41, 46

Sta. 1+570.000 29th. St., Const.  
 Curb Inlet (Type 1A), 8.950 m Lt.  
 L = 1.93 m, W = 1.32 m  
 Inlet Top = 65.719  
 Install 450 mm x 7.04 m  
 Storm Swr. (RCP)(NE)  
 FI Out=64.871 (450 mm RCP-NE)  
 See Sht. No. 17, 37, 46

Sta. 1+637.227 29th. St., Const.  
 Curb Inlet (Type 1A), 8.950 m Lt.  
 L = 3.45 m, W = 1.32 m  
 Inlet Top = 64.952  
 Stack Inlet on Exist. 2-2.13 m x 1.07 m  
 RCB's  
 FI In & Out=63.318 (Exist. 2-7'x3.5' RCB's)  
 See Sht. No. 17, 38, 46, 47

Sta. 1+643.5 29th. St., 3.7 m Lt.  
 Remove Exist. Curb Inlet, Drop Inlet  
 and 6.1 m of 375 mm RCP. Install 375  
 mm Pipe Plug in RCB.



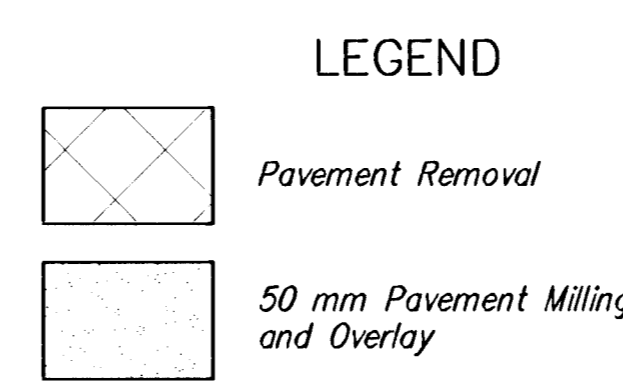
DATE	
BY	
REFERENCES NOTED	
REFERENCES CHECKED	

Sta. 1+643.4 29th. St., 7.3 m Rt.  
 Remove Exist. Curb Inlet and 3.9 m of  
 375 mm RCP. Install 375 mm Pipe  
 Plug in RCB.

Sta. 1+639.299 29th. St., Const.  
 Curb Inlet (Type 1A), 8.950 m Rt.  
 L = 4.98 m, W = 1.32 m  
 Inlet Top = 64.952  
 Stack Inlet on Exist. 2-2.13 m x 1.07 m  
 RCB's  
 FI In & Out=63.322 (Exist. 2-7'x3.5' RCB's)  
 See Sht. No. 17, 39, 46, 47

Sta. 1+637.205 29th. St., Connect  
 600 mm Storm Swr. (RCP)(W) to  
 Exist. 2-2.13 m x 1.07 m RCB's,  
 10.660 m Rt.  
 See Sht. No. 17, 46

BM #2 COW Bench Mark. NE cor. of RCBC, on  
 the South end of the wingwall. 152.400 m± W.  
 of 1/4 Sec. Cor., Sec 32 T26S R2E.  
 Sta. 1+638.913, 13.596 m Lt. Elev.=65.822



**UTILITIES**

E - Weststar Energy (Electric)	261-6512
G - Farmland Industries (Gas) 1-918-333-4111	
G - Kansas Gas Service (Gas)	832-3101
G - Williams Pipeline (Gas)	529-6601
SWS - City of Wichita Stormwater Utility	268-4071
SS & W - City of Wichita Water Dept.	262-6000
CATV - Cox Communications (Cable)	262-0661
T - SBC (Telephone)	800-870-8390

NO.	DATE	REVISIONS	BY	APPD
KANSAS DEPARTMENT OF TRANSPORTATION				
29TH. STREET NORTH				
STA. 1+560 TO STA. 1+720				
PROJ. NO. 87 N-0287-01			SEDGWICK CO.	
MKEC ENGINEERING CONSULTANTS, INC.				
WICHITA, KANSAS				
DESIGNED BY:	ASH	CHECKED BY:	GJA	
DRAWN BY:	WNJ	DATE:	Jan. 2003 SHEET 16 OF 107	