

P.I. Sta. 1+770.139, 0.0 m Rt.
1. N=519692.5607, E=511473.4190

P.I. Sta. 1+810.139, 0.0 m Rt.
1. N=5196692.5751, E=511513.4190

Note:
Contractor to contact Kathy Fairbanks (634-8806) with Heartsprings prior to construction. She wants to remove the existing Buffalo Grass Sod. Coordinate with her prior to demolition.

STATE	PROJECT NO.	YEAR	SHEET NO	TOTAL SHEETS
KANSAS	87 N-0287-01	2003	18	107

DATE	
BY	
REFERENCES NOTED	
REFERENCES CHECKED	

Sta. 1+749.758 to Sta. 1+751.758 29th. St.
Transition Type III Curb and Gutter from
200 mm to 40 mm.
See Sht. No. 48

Sta. 1+804.348 29th. St., Const.
200 mm Reinf. Conc. Valley
Gutter. Saw Cut & Match Exist.
Pvmt., 18.7 m Lt.
See Sht. No. 35

Sta. 1+818.897 to Sta. 1+820.897 29th. St.
Transition Type III Curb and Gutter from
40 mm to 200 mm.
See Sht. No. 48

Sta. 1+843.653 29th. St., Connect
0.65 m² Storm Swr. (RCPHE)(E) to
Exist. 2.13 x 1.07 m RCB, 10.965 m Lt.
Fl In=63.522 (0.65 m² RCPHE-E)
Fl In=63.368 (Exist. 2.13 m x 1.07 m RCB)
Fl Out=63.349 (Exist. 2.13 m x 1.07 m RCB)
See Sht. No. 19, 46

Sta. 1+794.8, 15.6 m Lt. If
needed. Engineer to verify in field.
Adjust Exist. Manhole
Exist. Manhole Top=Buried
Prop. Manhole Top=65.838

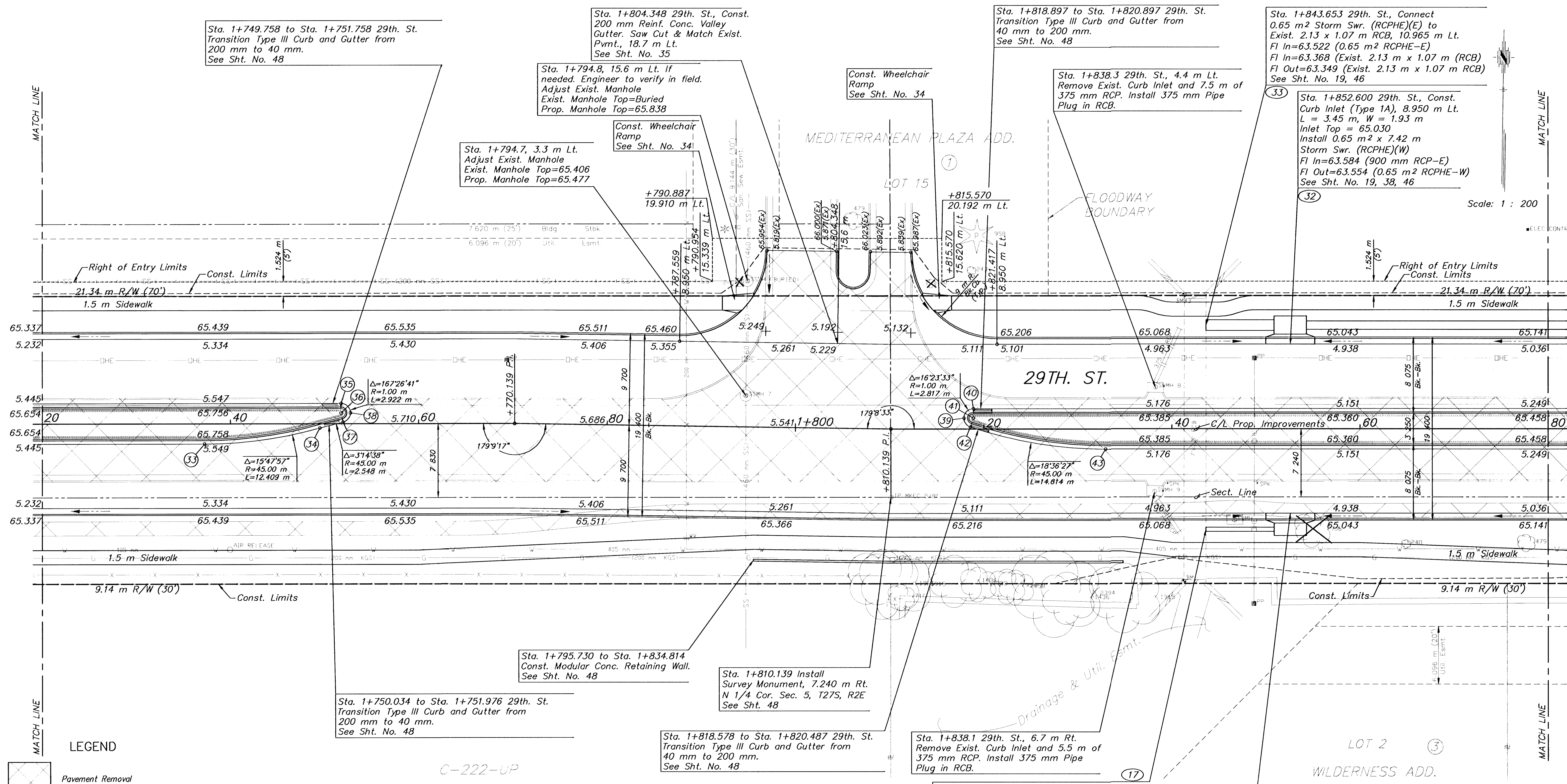
Const. Wheelchair
Ramp
See Sht. No. 34

Sta. 1+838.3 29th. St., 4.4 m Lt.
Remove Exist. Curb Inlet and 7.5 m of
375 mm RCP. Install 375 mm Pipe
Plug in RCB.

Sta. 1+794.7, 3.3 m Lt.
Adjust Exist. Manhole
Exist. Manhole Top=65.406
Prop. Manhole Top=65.477

Const. Wheelchair
Ramp
See Sht. No. 34

Sta. 1+852.600 29th. St., Const.
Curb Inlet (Type 1A), 8.950 m Lt.
L = 3.45 m, W = 1.93 m
Inlet Top = 65.030
Install 0.65 m² x 7.42 m
Storm Swr. (RCPHE)(W)
Fl In=63.584 (900 mm RCP-E)
Fl Out=63.554 (0.65 m² RCPHE-W)
See Sht. No. 19, 38, 46



Scale: 1 : 200

LEGEND

- Pavement Removal
- 50 mm Pavement Milling and Overlay

UTILITIES

- E - Weststar Energy (Electric) 261-6512
- G - Farmland Industries (Gas) 1-918-333-4111
- G - Kansas Gas Service (Gas) 832-3101
- G - Williams Pipeline (Gas) 529-6601
- SWS - City of Wichita Stormwater Utility 268-4071
- SS & W - City of Wichita Water Dept. 262-6000
- CATV - Cox Communications (Cable) 262-0661
- T - SBC (Telephone) 800-870-8390

MEDIAN LOCATION				
Point No.	Station	Offset m	Elevation High Edge	Elevation Top Curb
33	1+737.254	2.150 Rt.	65.533	65.742
34	1+749.506	0.450 Rt.	65.648	65.857
35	1+751.758	2.150 Lt.	65.607	65.816
36	1+751.758	1.150 Lt.	Radius	Point
37	1+751.976	0.174 Lt.	65.670	65.861
38	1+752.758	1.150 Lt.	65.643	65.852
39	1+817.897	1.150 Lt.	65.371	65.580
40	1+818.897	2.150 Lt.	65.333	65.542
41	1+818.897	1.150 Lt.	Radius	Point
42	1+818.578	0.202 Lt.	65.396	65.587
43	1+832.937	2.150 Rt.	65.227	65.436

- N 1/4 Cor. Sec. 5, T27S, R2E
Sta. 1+810.139, 7.240 m Rt.
1. Fnd. 16 mm Bar & MKEC Cap
2. "f" cut S. curb 29th. St. 1.859 m NE
3. "f" cut S. curb 29th. St. 1.966 m NW
4. "v" notch S. curb 29th. St. 1.698 m N
5. N=519685.336, E=511513.530

UTILITY ADJUSTMENTS				
Station	Offset m	Elevation Existing	Elevation Proposed	Remarks
1+788.6	11.9 Rt.	65.276	65.495	Water Valve
1+794.7	3.3 Lt.	65.406	65.477	S.S. MH
1+794.8	15.6 Lt.	Buried	65.838	S.S. MH

BM #3 COW Bench Mark NW cor. of RCB, on the South end of wingwall
Sta. 1+841.325, 14.188 m Lt. Elev.=65.776

DESIGNED BY: ASH	CHECKED BY: GJA
DRAWN BY: WNJ	DATE: Jan. 2003 SHEET 18 OF 107

KANSAS DEPARTMENT OF TRANSPORTATION
29TH. STREET NORTH
STA. 1+720 TO STA. 1+880
PROJ. NO. 87 N-0287-01 SEDGWICK CO.
MKEC ENGINEERING CONSULTANTS, INC.
WICHITA, KANSAS