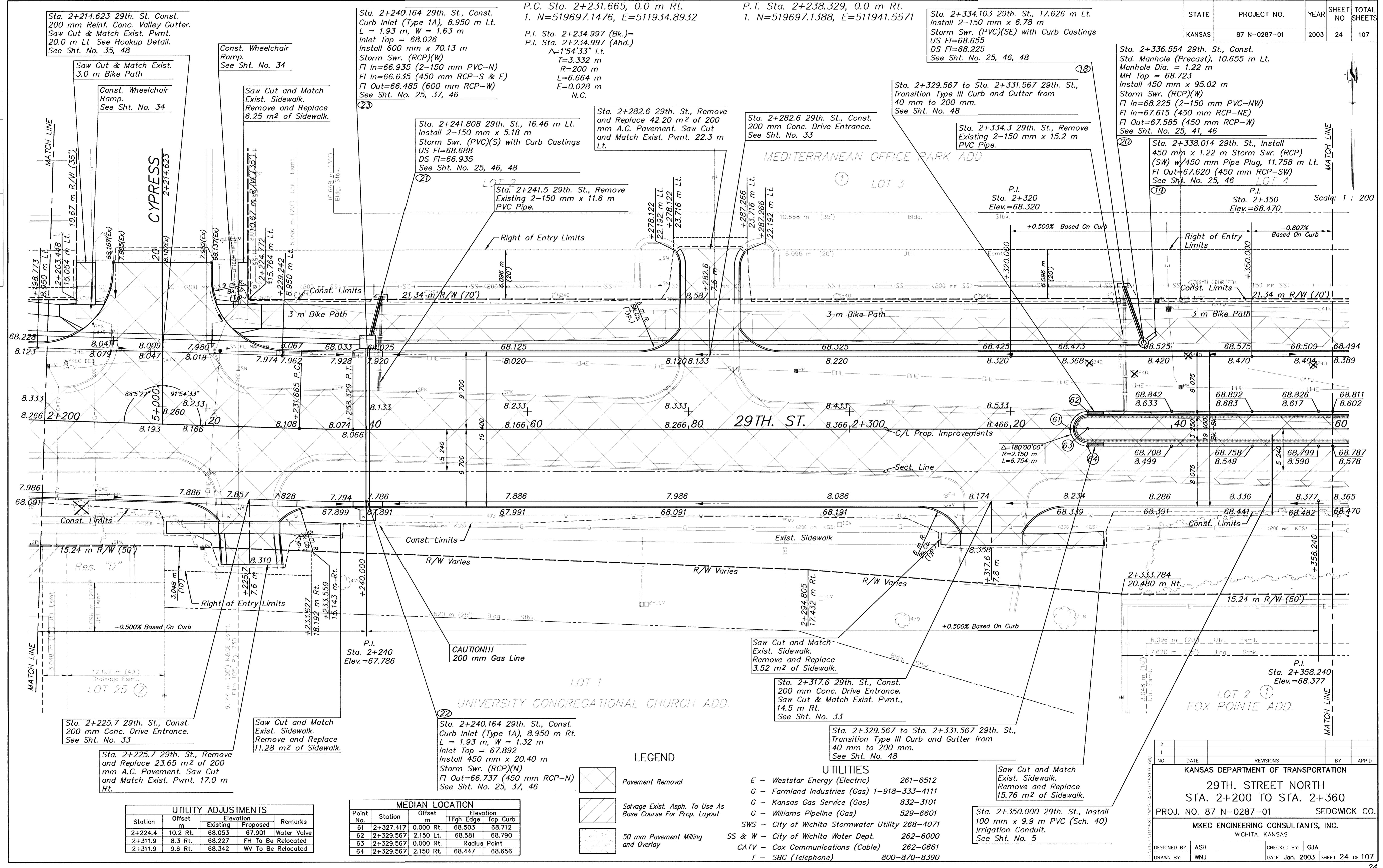


STATE	PROJECT NO.	YEAR	SHEET NO.	TOTAL SHEETS
KANSAS	87 N-0287-01	2003	24	107

DATE	
BY	
REFERENCES NOTED	
REFERENCES CHECKED	



Station	Offset m	Elevation		Remarks
		Existing	Proposed	
2+224.4	10.2 Rt.	68.053	67.901	Water Valve
2+311.9	8.3 Rt.	68.227		FH To Be Relocated
2+311.9	9.6 Rt.	68.342		WV To Be Relocated

Point No.	Station	Offset m	Elevation	
			High Edge	Top Curb
61	2+327.417	0.000 Rt.	68.503	68.712
62	2+329.567	2.150 Lt.	68.581	68.790
63	2+329.567	0.000 Rt.		Radius Point
64	2+329.567	2.150 Rt.	68.447	68.656

**LEGEND**

- Pavement Removal
- Salvage Exist. Asph. To Use As Base Course For Prop. Layout
- 50 mm Pavement Milling and Overlay

- UTILITIES**
- E - Weststar Energy (Electric) 261-6512
  - G - Farmland Industries (Gas) 1-918-333-4111
  - G - Kansas Gas Service (Gas) 832-3101
  - G - Williams Pipeline (Gas) 529-6601
  - SWS - City of Wichita Stormwater Utility 268-4071
  - SS & W - City of Wichita Water Dept. 262-6000
  - CATV - Cox Communications (Cable) 262-0661
  - T - SBC (Telephone) 800-870-8390

KANSAS DEPARTMENT OF TRANSPORTATION  
 29TH. STREET NORTH  
 STA. 2+200 TO STA. 2+360  
 PROJ. NO. 87 N-0287-01 SEDGWICK CO.  
 MKEC ENGINEERING CONSULTANTS, INC.  
 WICHITA, KANSAS

DESIGNED BY: ASH	CHECKED BY: GJA
DRAWN BY: WNJ	DATE: Jan. 2003 SHEET 24 OF 107