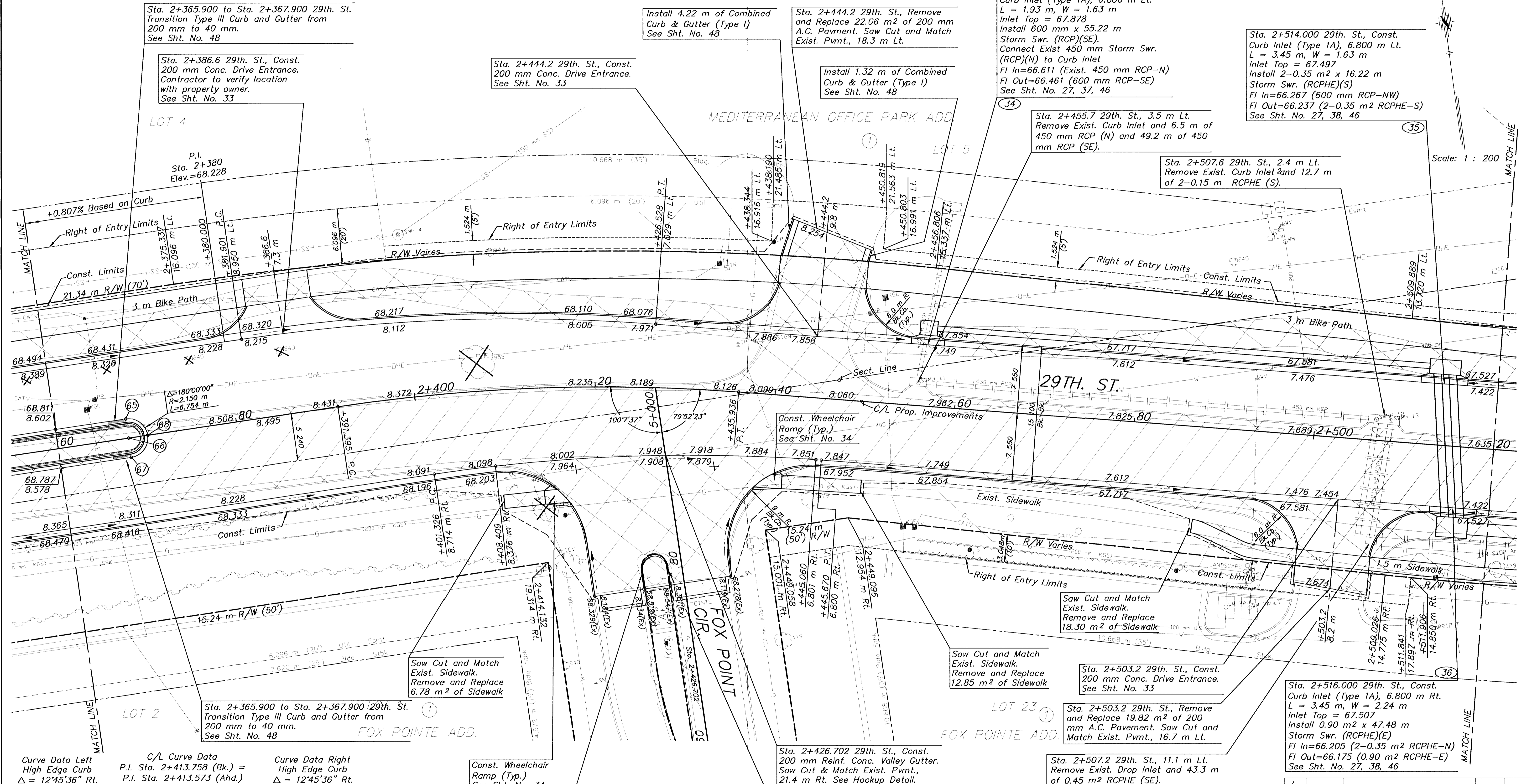


P.C. Sta. 2+391.395, 0.0 m Rt.
1. N=519699.485, E=512094.605

P.T. Sta. 2+435.936, 0.0 m Rt.
1. N=519695.224, E=512138.849

STATE	PROJECT NO.	YEAR	SHEET NO.	TOTAL SHEETS
KANSAS	87 N-0287-01	2003	26	107

DATE	
BY	
REFERENCES NOTED	
REFERENCES CHECKED	



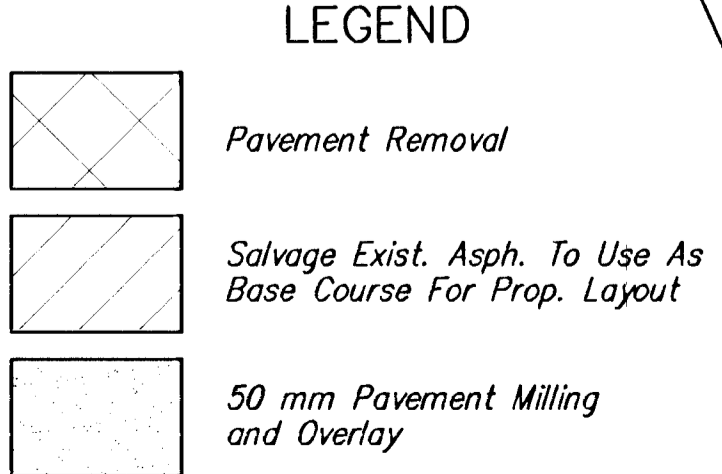
Curve Data Left High Edge Curb
 $\Delta = 12'45'36''$ Rt.
 $T = 23.123$ m
 $R = 206.800$ m
 $L = 46.055$ m
 $E = 1.289$ m

C/L Curve Data
P.I. Sta. 2+413.758 (Bk.) =
P.I. Sta. 2+413.573 (Ahd.)
 $\Delta = 12'45'36''$ Rt.
 $T = 22.363$ m
 $R = 200.000$ m
 $L = 44.540$ m
 $E = 1.246$ m
N.C.

Curve Data Right High Edge Curb
 $\Delta = 12'45'36''$ Rt.
 $T = 21.602$ m
 $R = 193.200$ m
 $L = 43.026$ m
 $E = 1.204$ m

Point No.	Station	Offset m	Elevation m	Top Curb
65	2+367.900	2.150 Lt.	68.539	68.748
66	2+367.900	0.000 Rt.	Radius Point	
67	2+367.900	2.150 Rt.	68.524	68.733
68	2+370.050	0.000 Rt.	68.576	68.785

Station	Offset m	Existing Elevation	Proposed Elevation	Remarks
2+412.7	10.1 Rt.	68.285	68.243	Water Valve
2+493.3	5.8 Lt.	67.850	67.555	Water Valve
2+498.4	8.0 Lt.	67.744	67.631	Water Valve



- UTILITIES**
- E - Weststar Energy (Electric) 261-6512
 - G - Farmland Industries (Gas) 1-918-333-4111
 - G - Kansas Gas Service (Gas) 832-3101
 - G - Williams Pipeline (Gas) 529-6601
 - SWS - City of Wichita Stormwater Utility 268-4071
 - SS & W - City of Wichita Water Dept. 262-6000
 - CATV - Cox Communications (Cable) 262-0661
 - T - SBC (Telephone) 800-870-8390

2
1
NO. DATE REVISIONS BY APPD

KANSAS DEPARTMENT OF TRANSPORTATION

29TH. STREET NORTH
STA. 2+360 TO STA. 2+520

PROJ. NO. 87 N-0287-01 SEDGWICK CO.

MKEC ENGINEERING CONSULTANTS, INC.
WICHITA, KANSAS

DESIGNED BY: ASH
DRAWN BY: WNJ

CHECKED BY: GJA
DATE: Jan. 2003

SHEET 26 OF 107