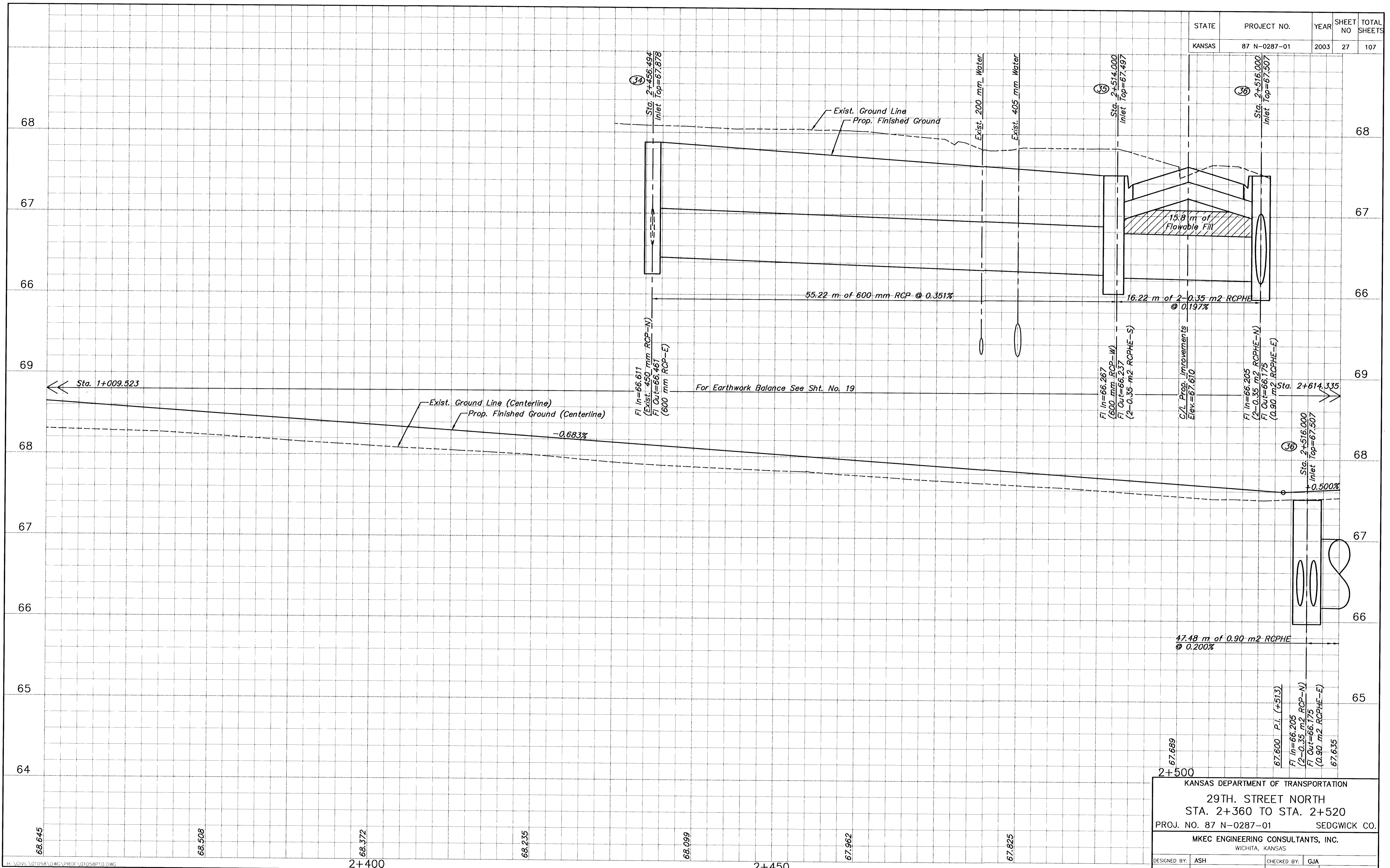


| STATE | PROJECT NO. | YEAR | SHEET NO | TOTAL SHEETS |
|--------|--------------|------|----------|--------------|
| KANSAS | 87 N-0287-01 | 2003 | 27 | 107 |



2+500

KANSAS DEPARTMENT OF TRANSPORTATION
29TH. STREET NORTH
STA. 2+360 TO STA. 2+520
PROJ. NO. 87 N-0287-01 SEDGWICK CO.

MKEC ENGINEERING CONSULTANTS, INC.
WICHITA, KANSAS

DESIGNED BY: ASH
DRAWN BY: WNJ

CHECKED BY: CJA
DATE: Jan. 2003

SHEET 27 OF 107