

STATE	PROJECT NO.	YEAR	SHEET NO	TOTAL SHEETS
KANSAS	87 N-0287-01	2003	28	107

P.C. Sta. 2+558.512, 0.0 m Rt.
1. N=519669.987, E=512258.799

P.T. Sta. 2+591.900, 0.0 m Rt.
1. N=519666.790, E=512291.965

Sta. 2+595.978 29th. St., Const.
Curb Inlet (Type 1A), 6.800 m Lt.
L = 3.45 m, W = 1.32 m
Inlet Top = 67.381
Install 2-0.30 m² x 16.10 m
Storm Swr. (RCPHE)(S)
Connect Exist. 900 mm Storm Swr.
(RCP)(N) to Inlet
FI In=66.380 (375 mm RCP-NW)
FI In=66.268 (Exist. 900 mm RCP-N)
FI Out=66.009 (2-0.30 m² RCPHE-S)
See Sht. No. 29, 38, 46

Sta. 2+585.000 29th. St., Const.
Std. Manhole (Precast), 12.914 m Lt.
Manhole Dia. = 1.22 m
Manhole Top = 67.907
Install 375 mm x 9.35 m
Storm Swr. (RCP)(SE)
Connect Exist. 375 mm Storm Swr.
(RCP)(NW) to Manhole
FI In=66.447 (Exist. 375 mm RCP-NW)
FI Out=66.417 (375 mm RCP-SE)
See Sht. No. 29, 41, 46

Sta. 2+596.1 29th. St., 7.1 m Lt.
Remove Exist. Curb Inlet and 11.2 m of
375 mm RCP (NW).

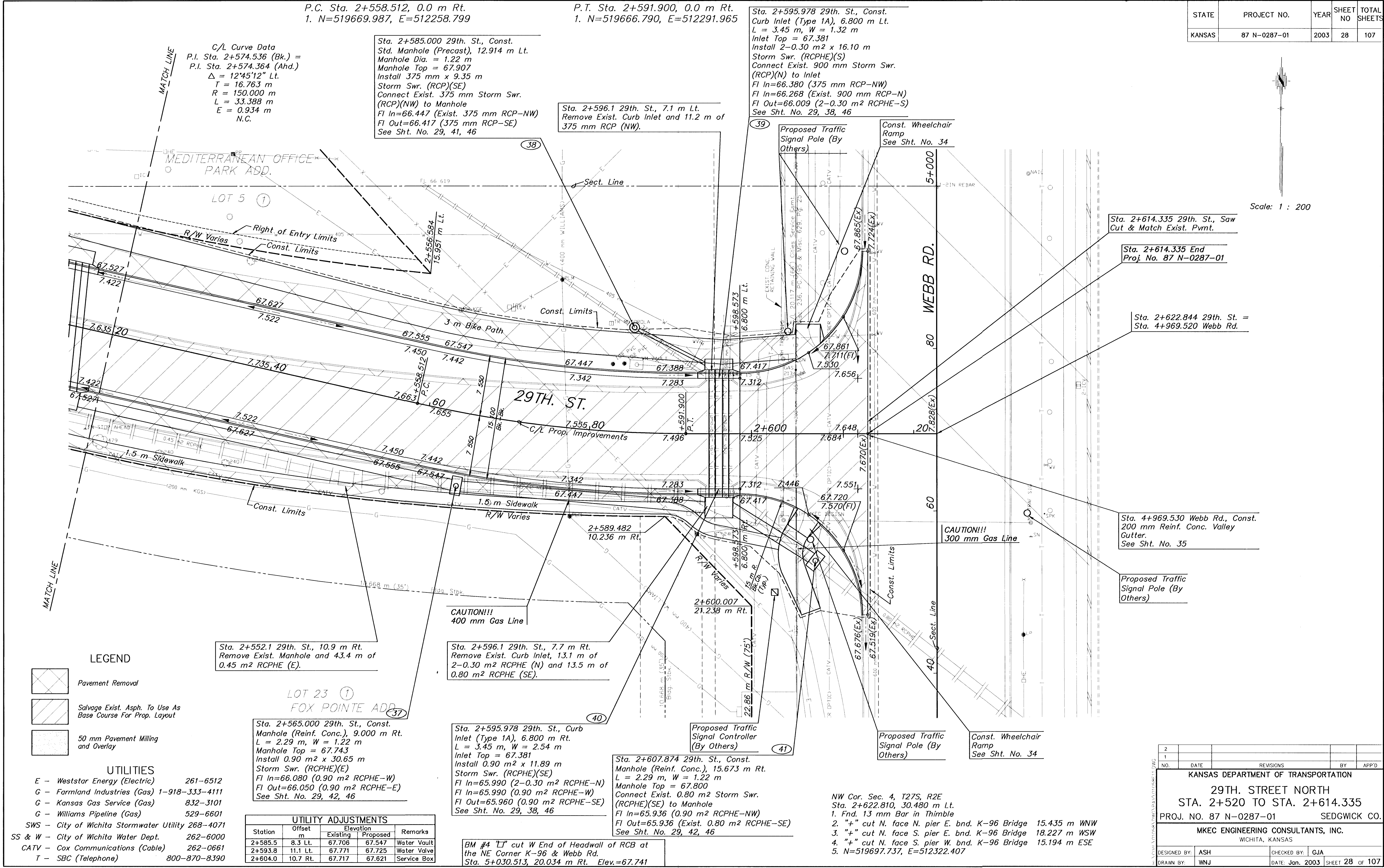
Const. Wheelchair
Ramp
See Sht. No. 34

Proposed Traffic
Signal Pole (By
Others)

C/L Curve Data
P.I. Sta. 2+574.536 (Bk.) =
P.I. Sta. 2+574.364 (Ahd.)
Δ = 12°45'12" Lt.
T = 16.763 m
R = 150.000 m
L = 33.388 m
E = 0.934 m
N.C.

Scale: 1 : 200

DATE	
BY	
REFERENCES NOTED	
REFERENCES CHECKED	



LEGEND

- Pavement Removal
- Salvage Exist. Asph. To Use As Base Course For Prop. Layout
- 50 mm Pavement Milling and Overlay

UTILITIES

- E - Weststar Energy (Electric) 261-6512
- G - Farmland Industries (Gas) 1-918-333-4111
- G - Kansas Gas Service (Gas) 832-3101
- G - Williams Pipeline (Gas) 529-6601
- SWS - City of Wichita Stormwater Utility 268-4071
- SS & W - City of Wichita Water Dept. 262-6000
- CATV - Cox Communications (Cable) 262-0661
- T - SBC (Telephone) 800-870-8390

UTILITY ADJUSTMENTS				
Station	Offset m	Elevation		Remarks
		Existing	Proposed	
2+585.5	8.3 Lt.	67.708	67.547	Water Vault
2+593.8	11.1 Lt.	67.771	67.725	Water Valve
2+604.0	10.7 Rt.	67.717	67.621	Service Box

Sta. 2+552.1 29th. St., 10.9 m Rt.
Remove Exist. Manhole and 43.4 m of
0.45 m² RCPHE (E).

Sta. 2+596.1 29th. St., 7.7 m Rt.
Remove Exist. Curb Inlet, 13.1 m of
2-0.30 m² RCPHE (N) and 13.5 m of
0.80 m² RCPHE (SE).

Sta. 2+565.000 29th. St., Const.
Manhole (Reinf. Conc.), 9.000 m Rt.
L = 2.29 m, W = 1.22 m
Manhole Top = 67.743
Install 0.90 m² x 30.65 m
Storm Swr. (RCPHE)(E)
FI In=66.080 (0.90 m² RCPHE-W)
FI Out=66.050 (0.90 m² RCPHE-E)
See Sht. No. 29, 42, 46

Sta. 2+595.978 29th. St., Curb
Inlet (Type 1A), 6.800 m Rt.
L = 3.45 m, W = 2.54 m
Inlet Top = 67.381
Install 0.90 m² x 11.89 m
Storm Swr. (RCPHE)(SE)
FI In=65.990 (2-0.30 m² RCPHE-N)
FI In=65.990 (0.90 m² RCPHE-W)
FI Out=65.960 (0.90 m² RCPHE-SE)
See Sht. No. 29, 38, 46

Sta. 2+607.874 29th. St., Const.
Manhole (Reinf. Conc.), 15.673 m Rt.
L = 2.29 m, W = 1.22 m
Manhole Top = 67.800
Connect Exist. 0.80 m² Storm Swr.
(RCPHE)(SE) to Manhole
FI In=65.936 (0.90 m² RCPHE-NW)
FI Out=65.936 (Exist. 0.80 m² RCPHE-SE)
See Sht. No. 29, 42, 46

BM #4 "L" cut W End of Headwall of RCB at
the NE Corner K-96 & Webb Rd.
Sta. 5+030.513, 20.034 m Rt. Elev.=67.741

2				
1	DATE	REVISIONS	BY	APP'D
KANSAS DEPARTMENT OF TRANSPORTATION				
29TH. STREET NORTH				
STA. 2+520 TO STA. 2+614.335				
PROJ. NO. 87 N-0287-01			SEDGWICK CO.	
MKEC ENGINEERING CONSULTANTS, INC.				
WICHITA, KANSAS				
DESIGNED BY:	ASH	CHECKED BY:	GJA	
DRAWN BY:	WNJ	DATE:	Jan. 2003	SHEET 28 OF 107