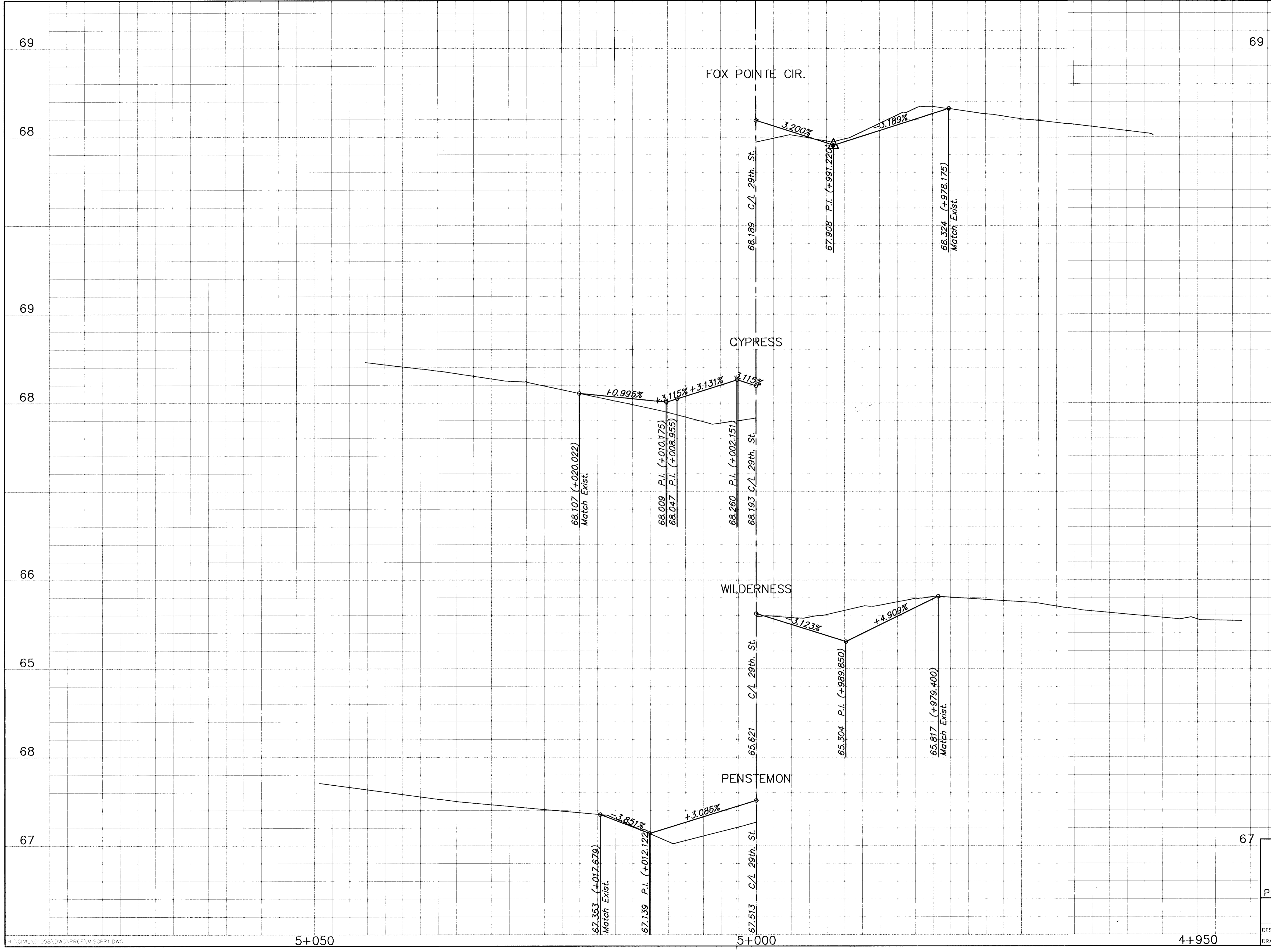


STATE	PROJECT NO.	YEAR	SHEET NO.	TOTAL SHEETS
KANSAS	87 N-0287-01	2003	32	107



69

68

69

68

66

65

68

67

FOX POINTE CIR.

68.189 C/L 29th. St.

67.908 P.I. (+997.220)

68.324 (+978.175)
Match Exist.

CYPRESS

68.107 (+020.022)
Match Exist.

68.009 P.I. (+010.175)
68.047 P.I. (+008.955)

68.260 P.I. (+002.151)
68.193 C/L 29th. St.

WILDERNESS

65.621 C/L 29th. St.

65.304 P.I. (+889.850)

65.817 (+979.400)
Match Exist.

PENSTEMON

67.513 C/L 29th. St.

67.553 (+017.679)
Match Exist.

67.139 P.I. (+012.122)

5+050

5+000

4+950

KANSAS DEPARTMENT OF TRANSPORTATION
 MISC. PROFILES
 PENSTEMON, WILDERNESS,
 CYPRESS & FOX POINTE CIR.
 PROJ. NO. 87 N-0287-01 SEDGWICK CO.
 MKEC ENGINEERING CONSULTANTS, INC.
 WICHITA, KANSAS

DESIGNED BY: ASH	CHECKED BY: GJA
DRAWN BY: WNJ	DATE: Jan. 2003 SHEET 32 OF 107