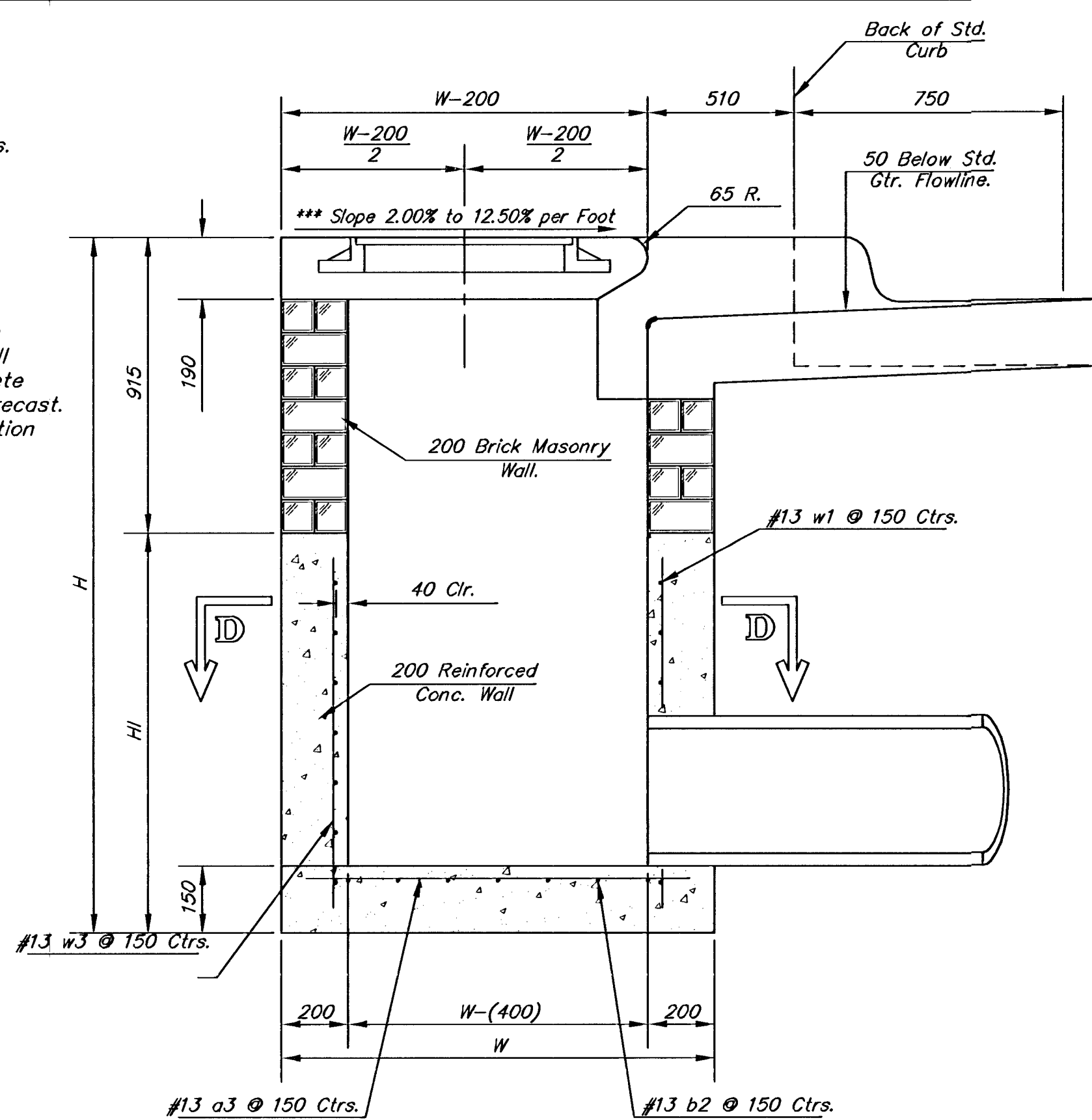


PLAN

NOTE:
Expansion Joint Only in Curb Area With Concrete Pavement.

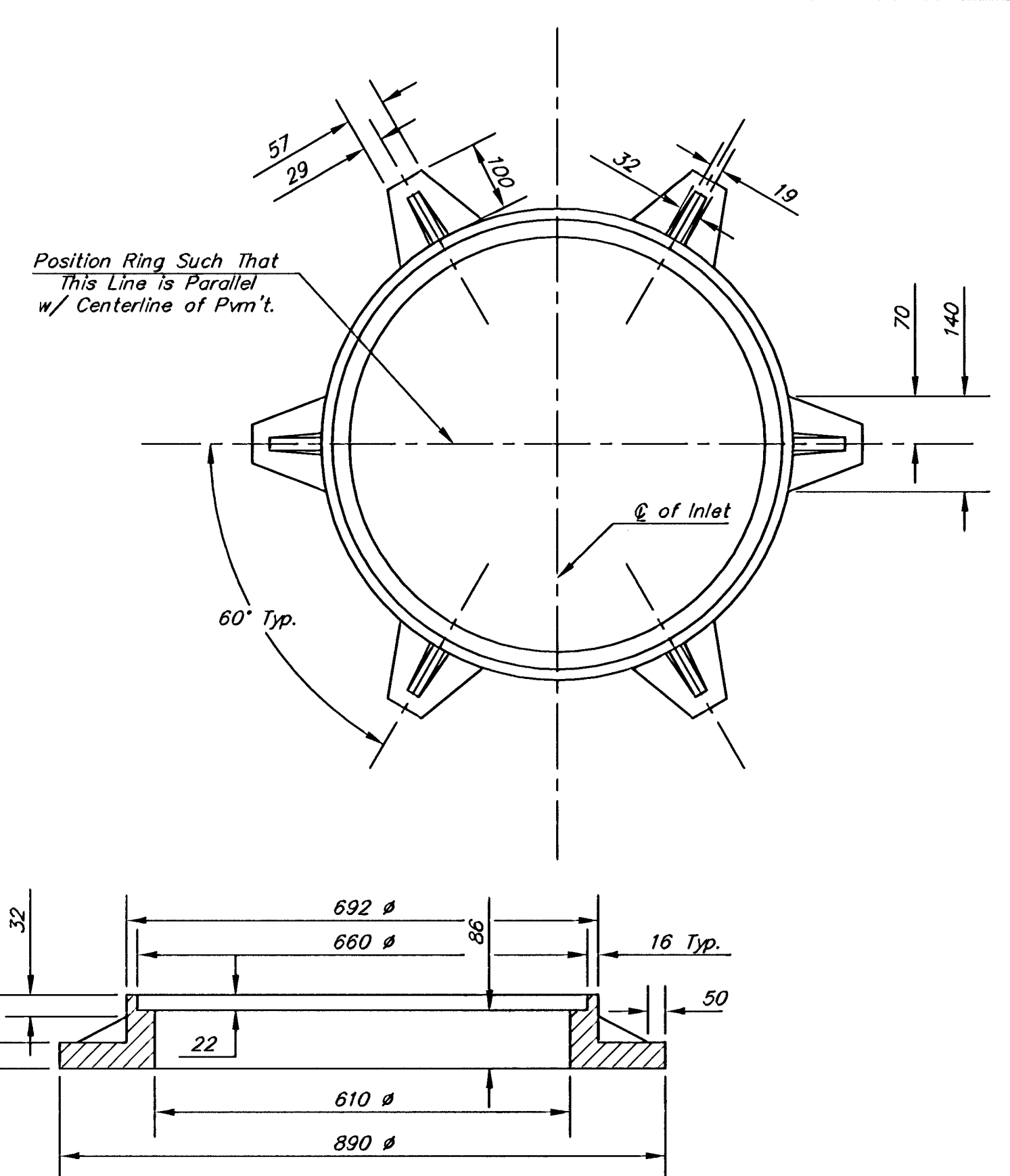
NOTE:
Inlet Top Reinforcing shall be Spaced on 150 mm Max. Centers. Inlet Lids Shall be Notched Out as Indicated to Facilitate Construction of Curb.

NOTE:
Concrete Tops to be installed on thin mortar cushion to insure full support along brick walls. Concrete tops may be cast in place or precast. Concrete used for inlet construction shall be concrete pavement mix with air entrainment.



SECTION A-A

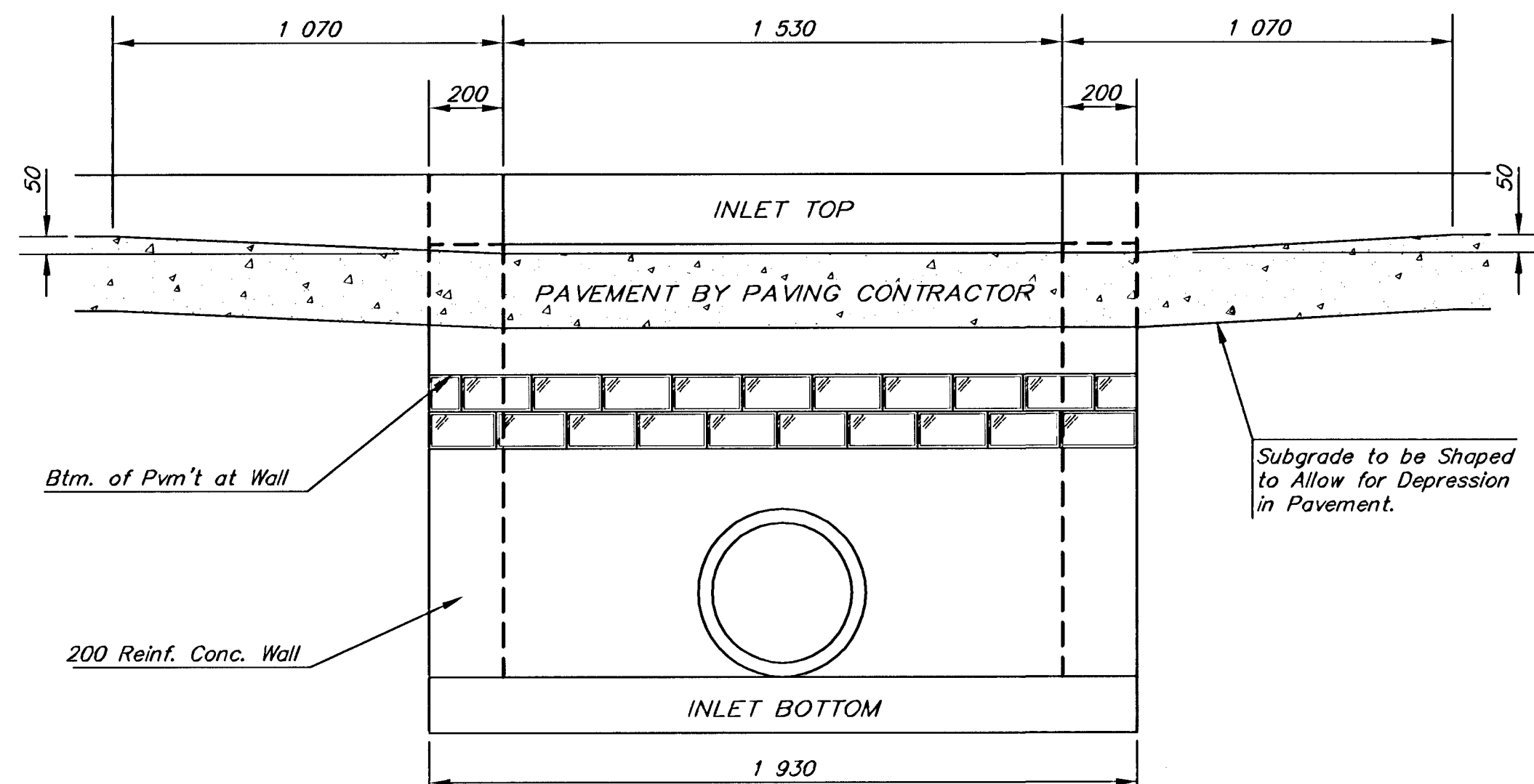
***NOTE: Slope of Inlet tops to Match Sidewalk or Parking Slopes within Limits Indicated.



MANHOLE RING AND COVER

Weight = 81.6 kg

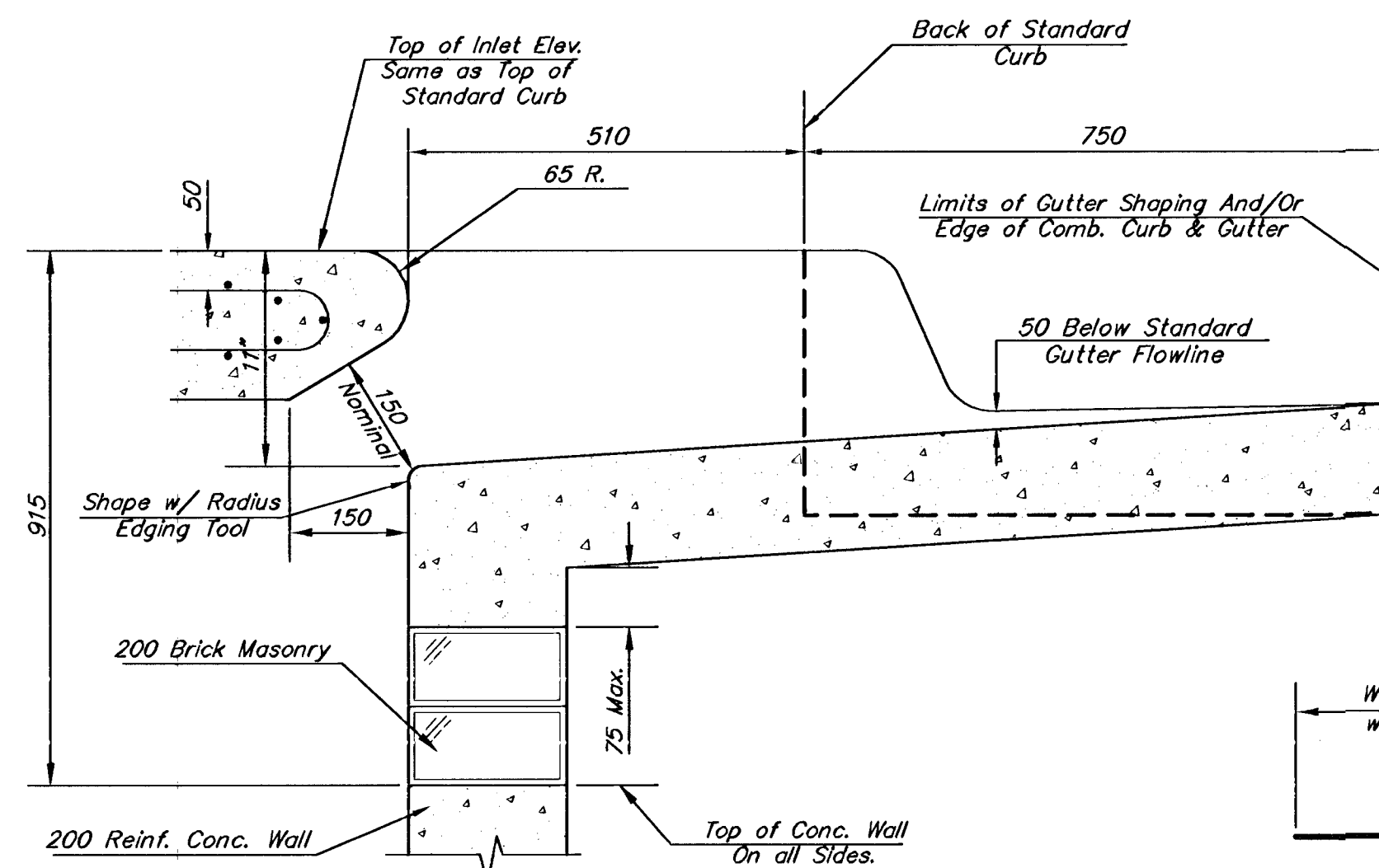
*See City of Wichita Standard Manhole Ring and Cover Detail Sheet for Cover Details to Be Used With Inlet Frame.



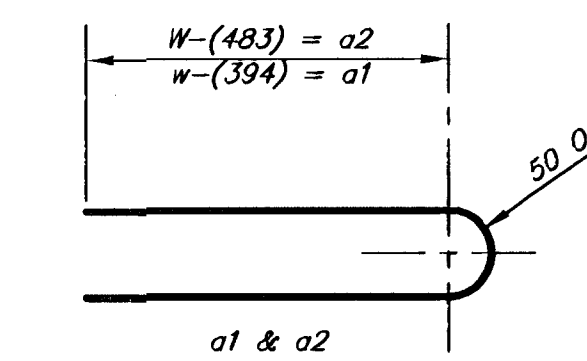
SECTION E-E

Btm. of Pvm't at Wall

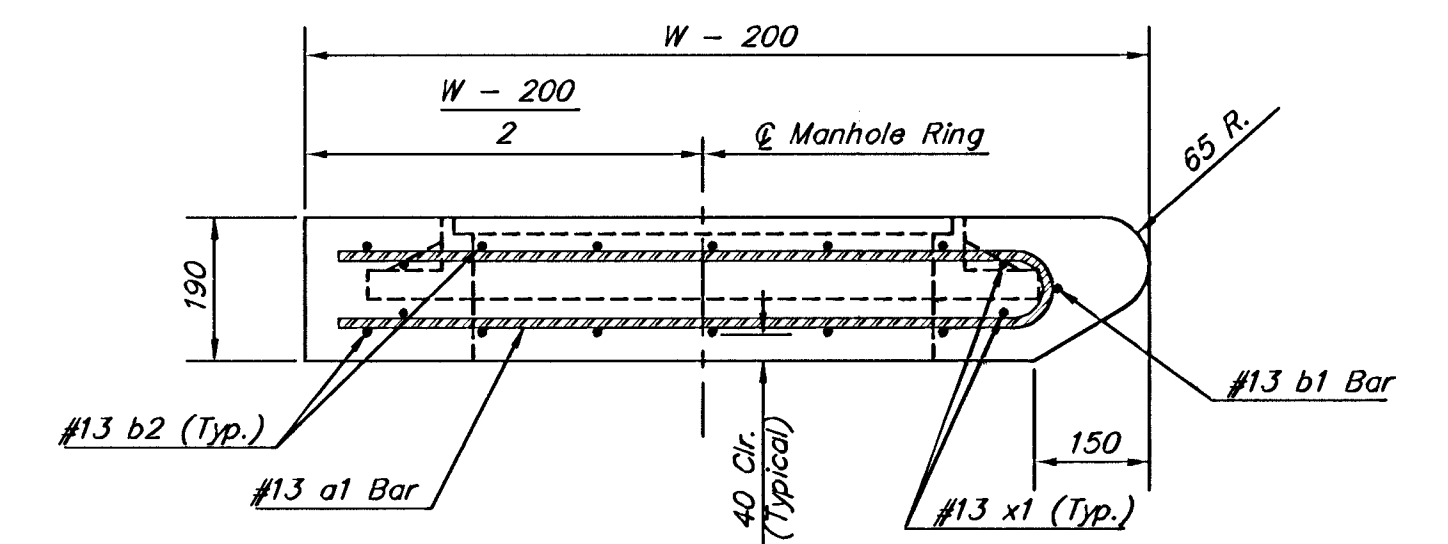
Subgrade to be Shaped to Allow for Depression in Pavement.



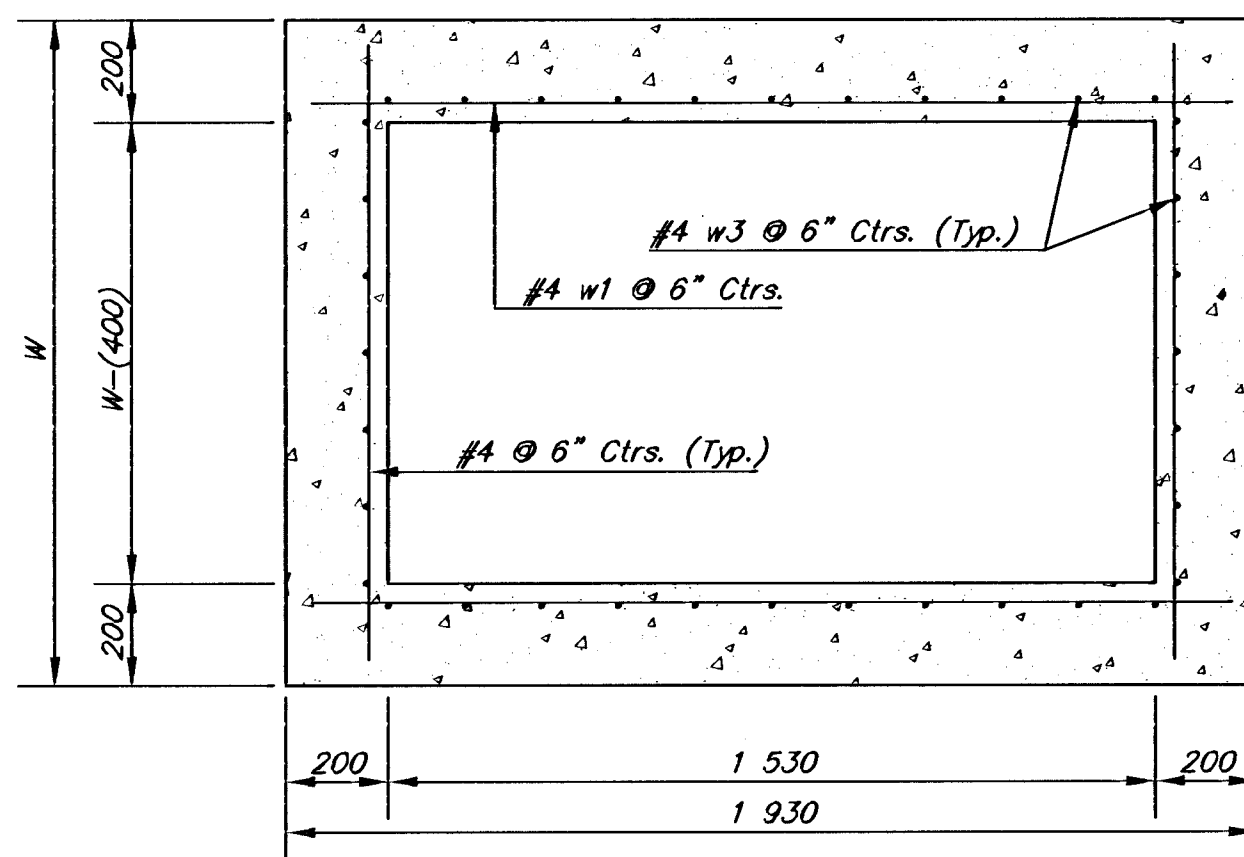
SECTION B-B



BENDING DIAGRAM



SECTION A-A



SECTION D-D

NOTE: Contractor shall have the option of constructing 8" brick masonry walls between the concrete inlet base and top on this inlet when W=1 930 and H=2 135 or less.

Additional curb and gutter construction necessary to connect set-back inlet to pavement will be paid for at the unit price bid for each inlet hookup.

Inlet invert shall be shaped with 8 sack sand mix concrete to create flow channels and to increase hydraulic efficiency such that the inlet will be self-cleaning between all inlet and/or outlet pipes.

The ends of all pipes installed in inlets shall be cut off flush with the inside face of the inlet wall

All dimensions are in millimeters.

PRECAST SLAB AND FLOOR REINFORCING											
		W = 1 320		W = 1 630		W = 1 930		W = 2 240		W = 2 540	
MARK	SIZE	NO.	LENGTH	NO.	LENGTH	NO.	LENGTH	NO.	LENGTH	NO.	LENGTH
* a1	#13	6	2 010	6	2 615	6	3 225	6	3 835	6	4 445
a2	#13	4	1 830	4	2 440	4	3 050	4	3 660	4	4 270
a3	#13	13	1 245	13	1 550	13	1 855	13	2 160	13	2 465
b1	#13	1	1 450	1	1 450	1	1 450	1	1 450	1	1 450
* b2	#13	23	1 855	29	1 855	35	1 855	41	1 855	47	1 855
x1	#13	8	1 170	8	1 270	8	1 370	8	1 475	8	1 575

WALL REINFORCING											
		W = 1 320		W = 1 630		W = 1 930		W = 2 240		W = 2 540	
MARK	SIZE	NO.	LENGTH	NO.	LENGTH	NO.	LENGTH	NO.	LENGTH	NO.	LENGTH
w1	#13	①	1 855	①	1 855	①	1 855	①	1 855	①	1 855
w2	#13	①	1 245	①	1 550	①	1 855	①	2 160	①	2 465
w3	#13	32	②	36	②	40	②	44	②	48	②

* Field Bend or Cut Reinforcing as Required for Clearance.
 ① (H1 - 305) (H1 - 305) Rounded down to nearest 150 mm
 ② H1 - 75

THE CITY OF WICHITA
CITY ENGINEER'S OFFICE
459 NORTH MAIN STREET
WICHITA, KANSAS 67202
(316) 268-4001
(316) 268-4114 FAX

**STANDARD TYPE 1-A
CURB INLET**
OPENING = 150 x 1 530

M. E. LINDEBAK P.E. - CITY ENGINEER

PROJECT NUMBER: 87 N-0287-01 INDEX CODE: XXXXXX

DATE: MAR 96 SHEET 37 OF 107