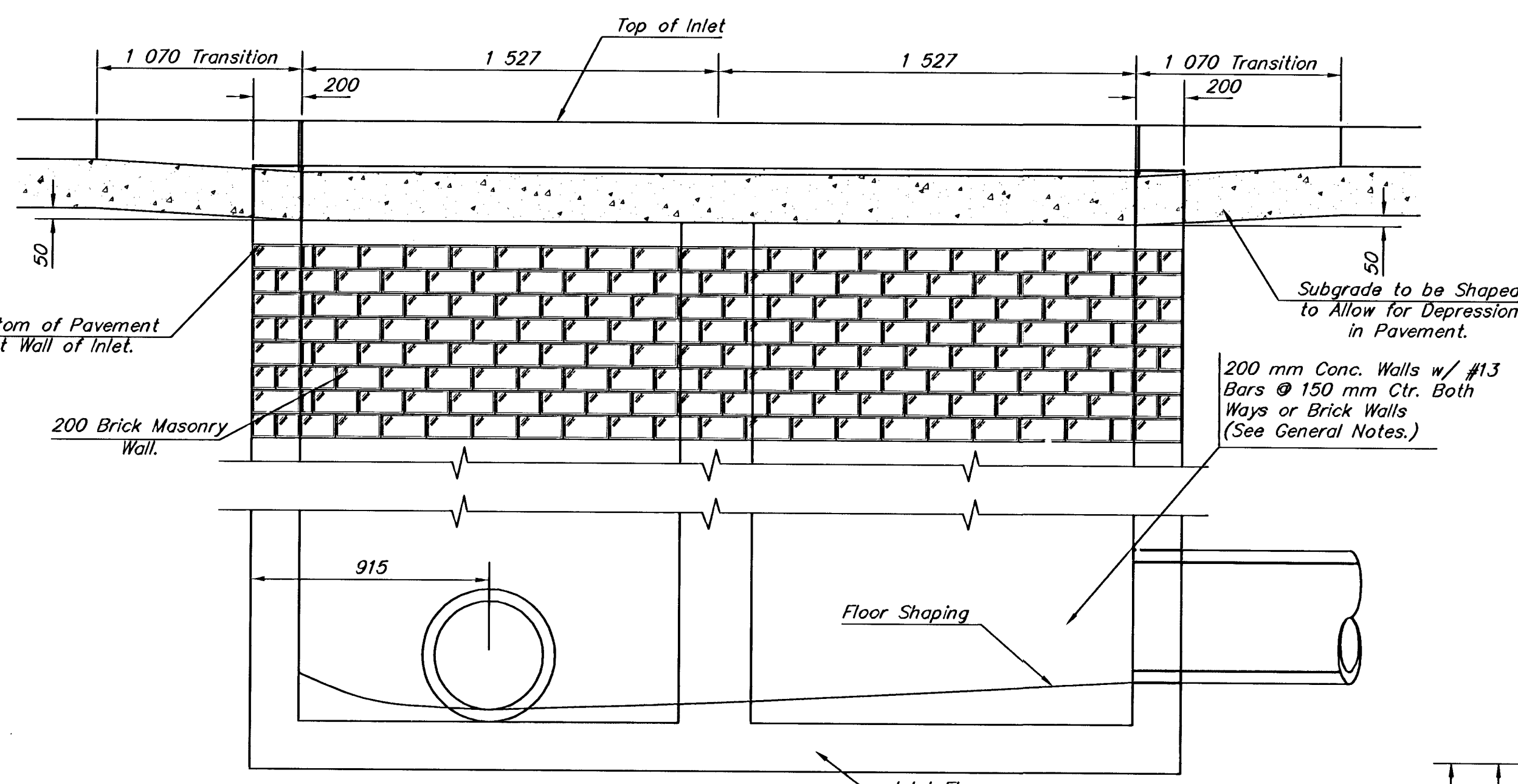


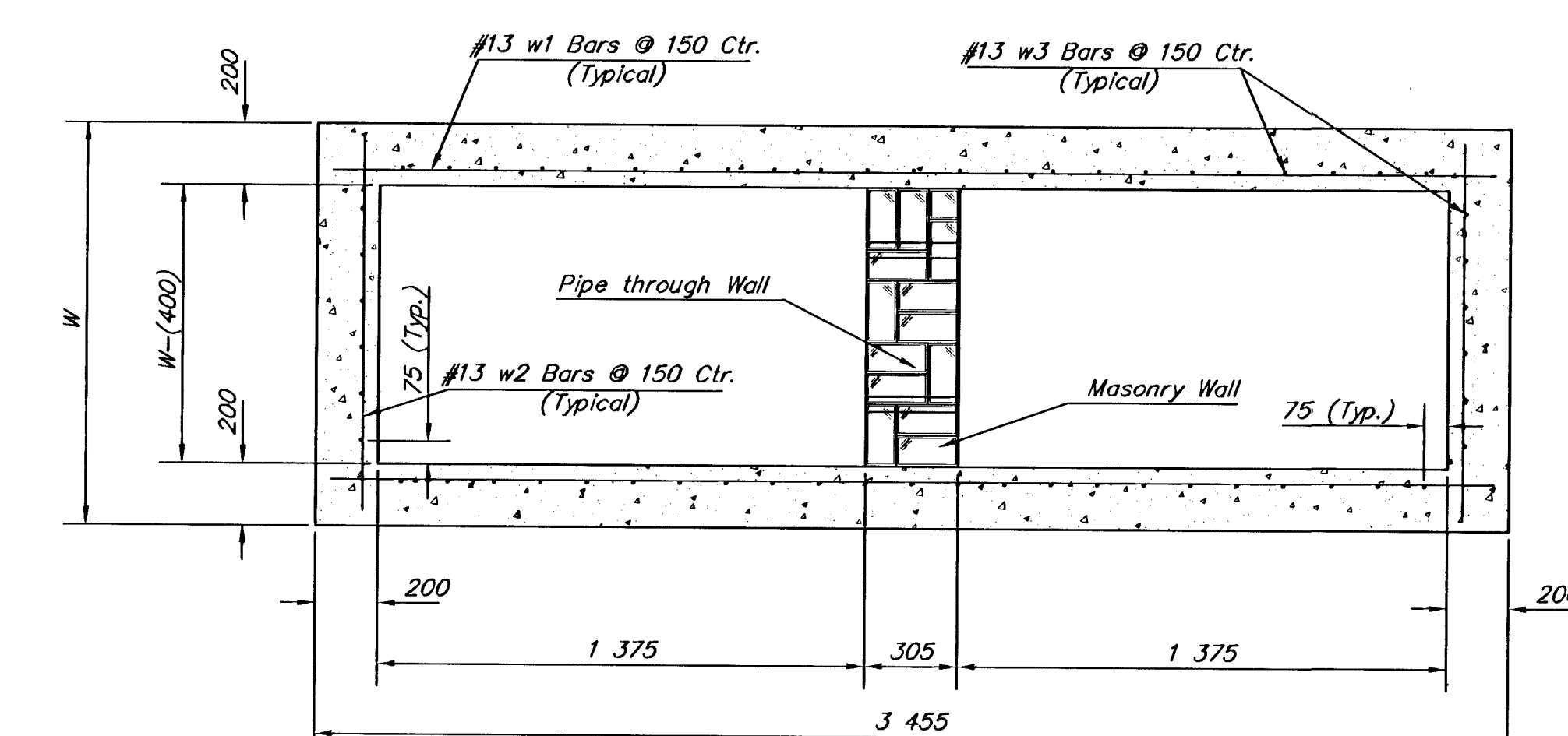
NOTE:
Expansion Joint Only in Curb Area with Concrete Pavement.

PLAN

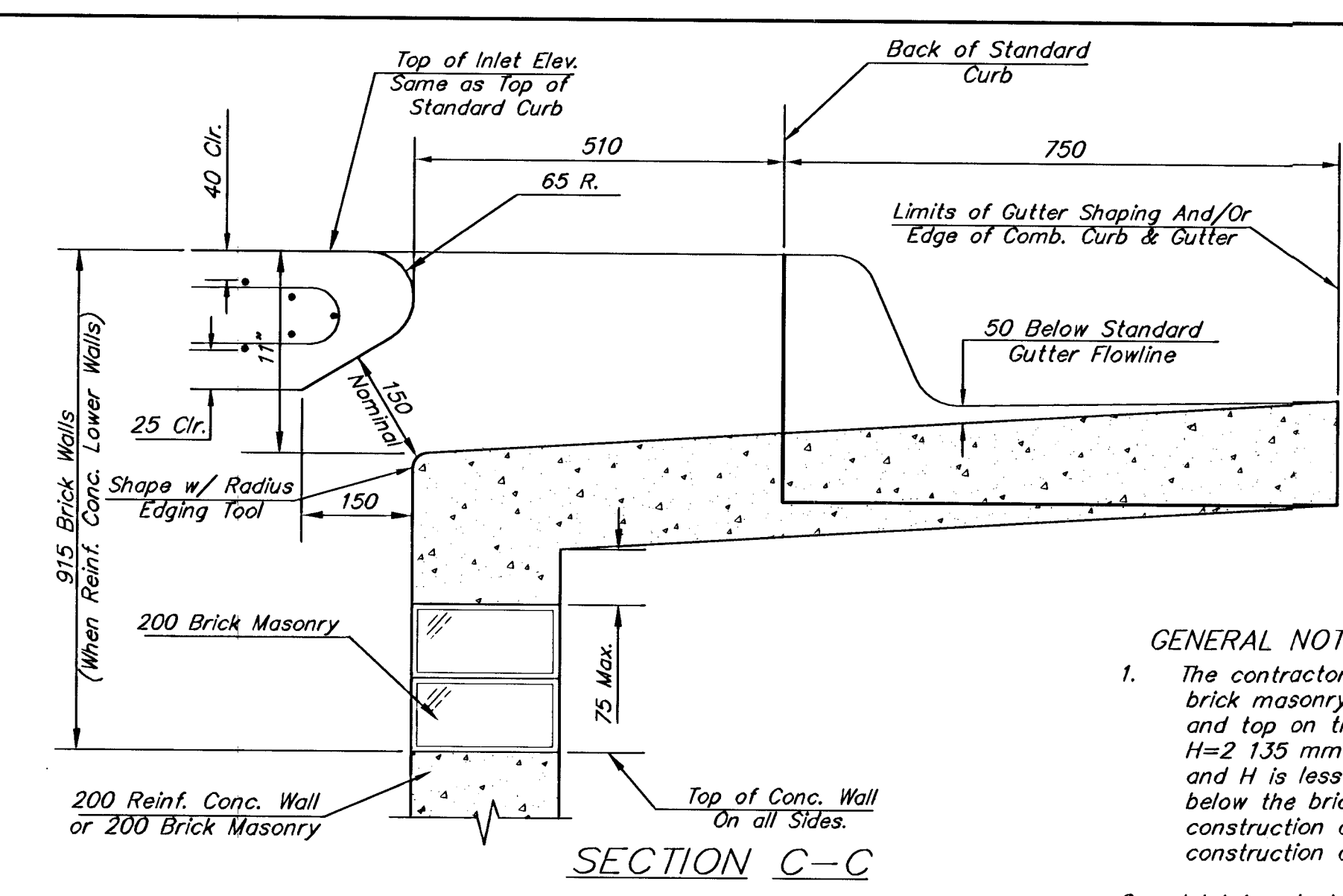
*Left Side Shown Without Slab Reinforcing, Right Side Shown With Slab Reinforcing



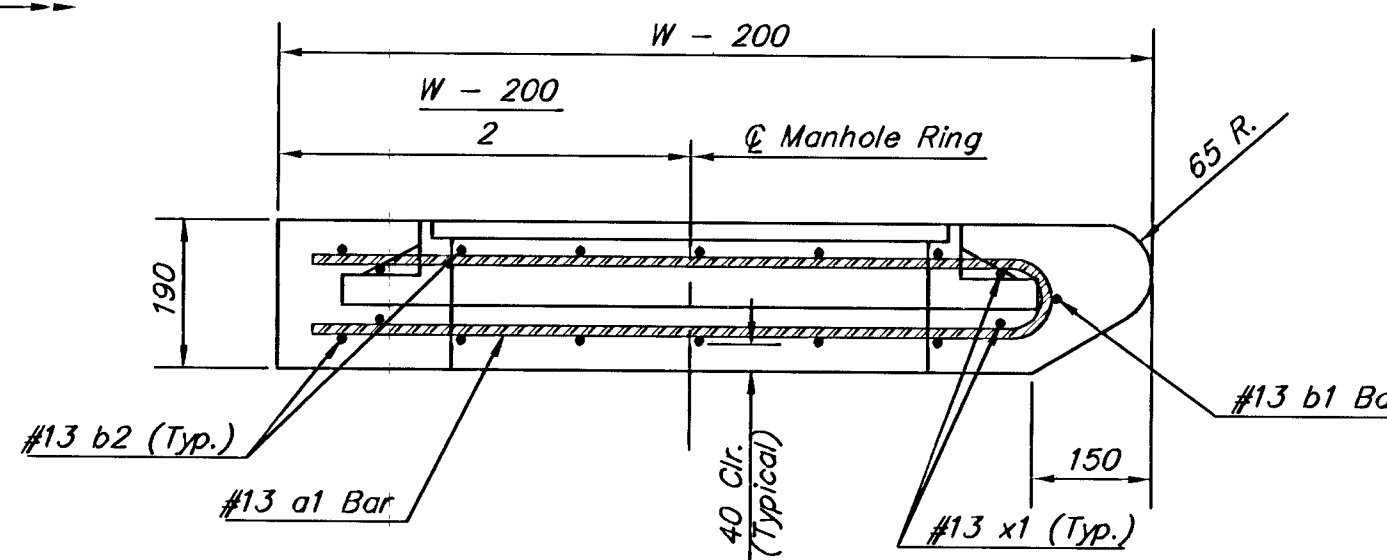
ELEVATION



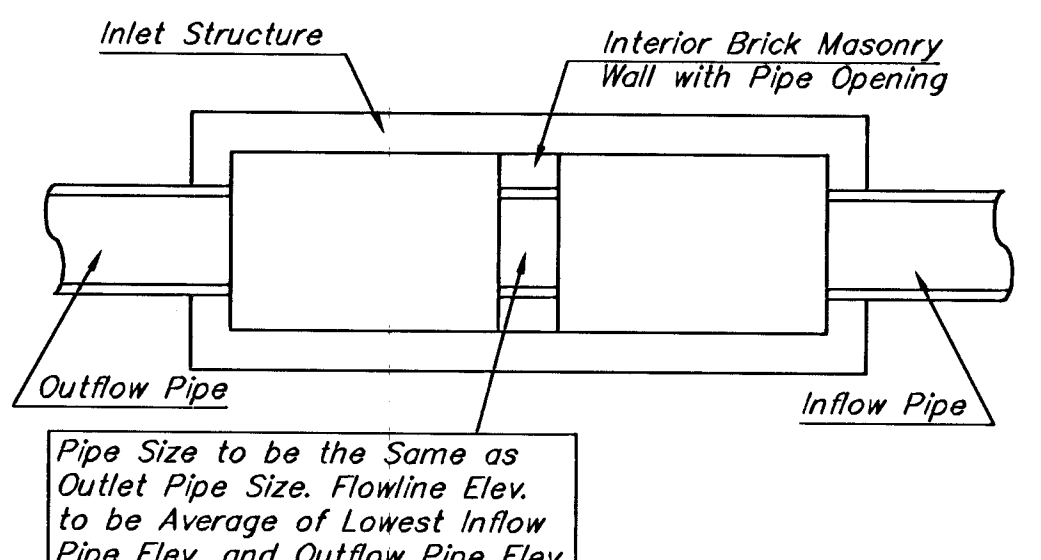
SECTION B-B



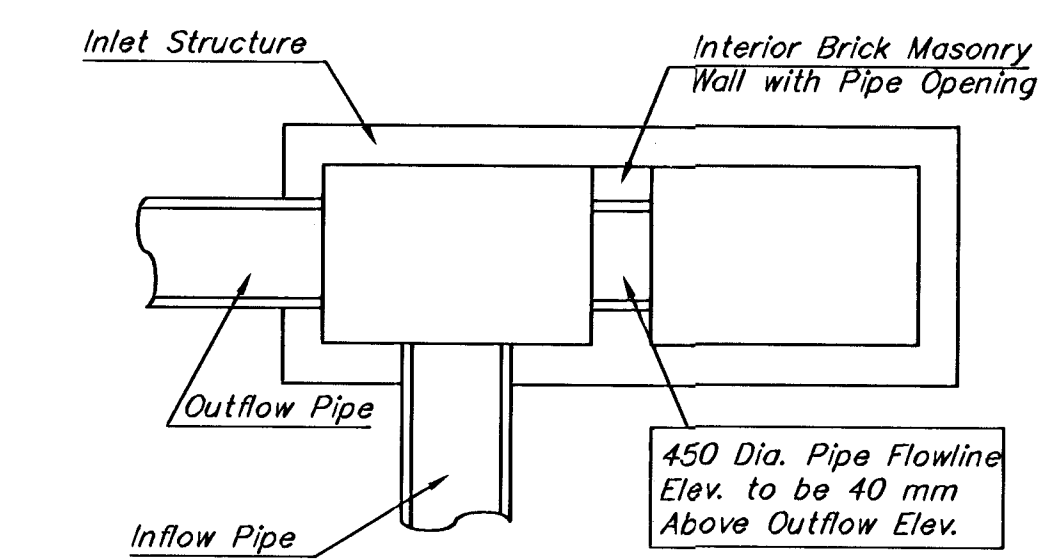
SECTION C-C



SECTION A-A

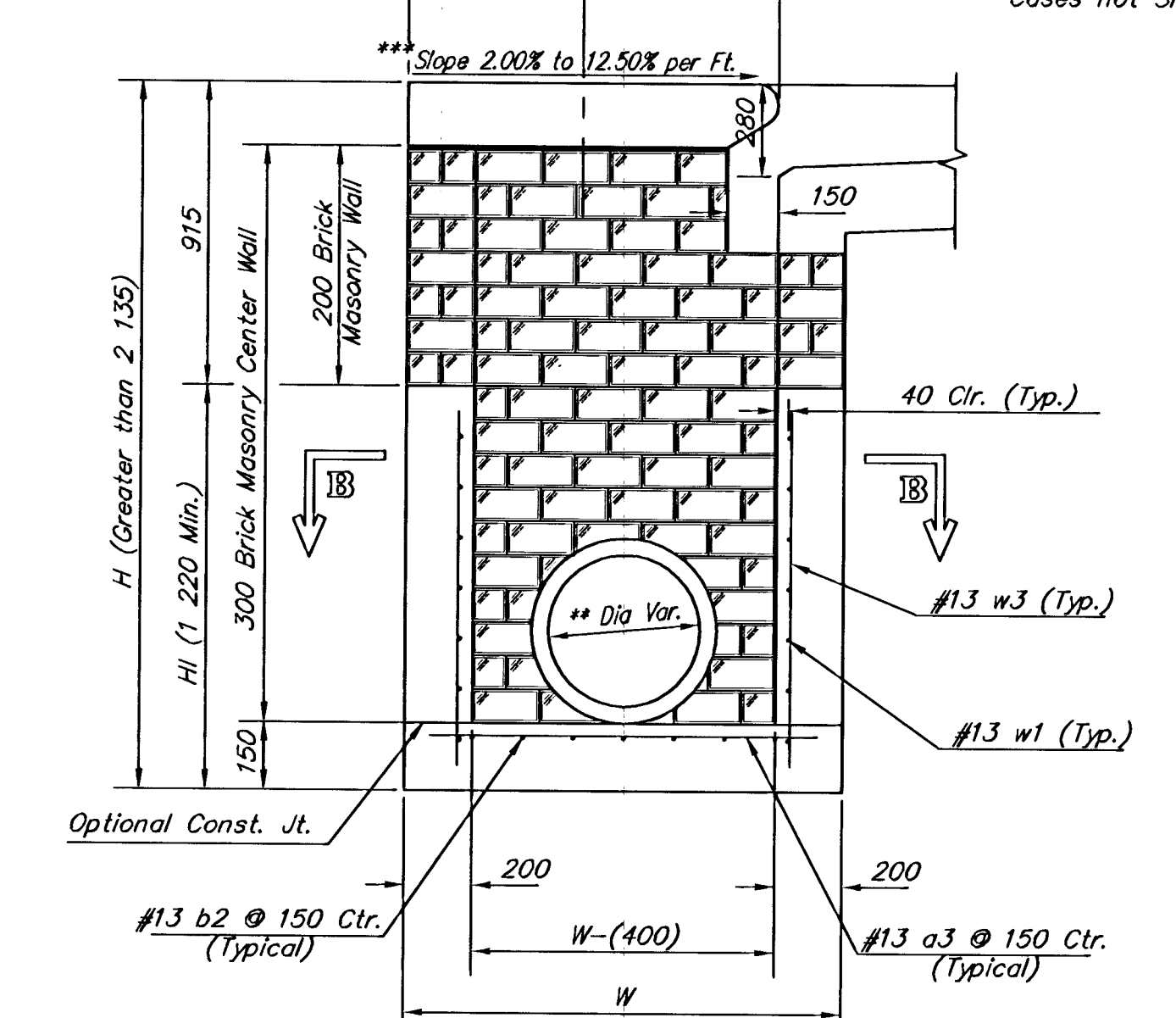


CASE I



CASE II

NOTE:
Center Wall Pipe Size shall be as Specified in Inlet Construction Notes on the Plan/Profile Sheets for those Cases not Shown Here.

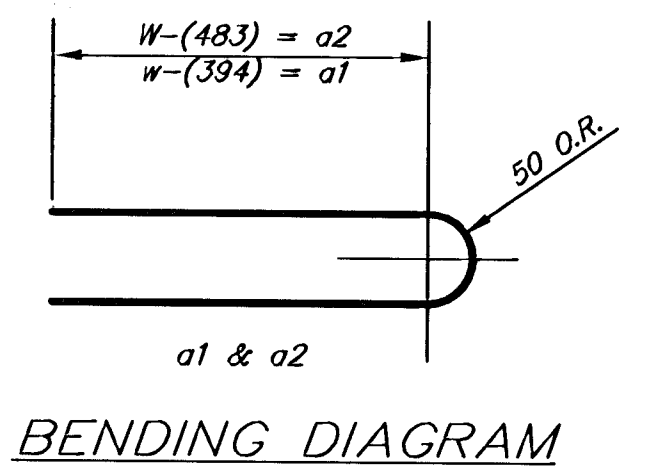


TYPICAL INLET SECTION AT CENTER WALL (Reinforced Concrete Walls)

PRECAST SLAB AND FLOOR REINFORCING											
MARK	SIZE	W = 1 320		W = 1 630		W = 1 930		W = 2 240		W = 2 540	
		NO.	LENGTH	NO.	LENGTH	NO.	LENGTH	NO.	LENGTH	NO.	LENGTH
* a1	#13	13	2 010	13	2 615	13	3 225	13	3 835	13	4 445
a2	#13	4	1 830	4	2 440	4	3 050	4	3 660	4	4 270
a3	#13	23	1 245	23	1 550	23	1 855	23	2 160	23	2 465
b1	#13	1	2 970	1	2 970	1	2 970	1	2 970	1	2 970
* b2	#13	23	3 380	29	3 380	35	3 380	41	3 380	47	3 380
x1	#13	16	1 170	16	1 270	16	1 370	16	1 475	16	1 575

WALL REINFORCING											
MARK	SIZE	W = 1 320		W = 1 630		W = 1 930		W = 2 240		W = 2 540	
		NO.	LENGTH	NO.	LENGTH	NO.	LENGTH	NO.	LENGTH	NO.	LENGTH
w1	#13	1	3 380	1	3 380	1	3 380	1	3 380	1	3 380
w2	#13	1	1 245	1	1 550	1	1 855	1	2 160	1	2 465
w3	#13	52	2	56	2	60	2	64	2	68	2

* Field Bend or Cut Reinforcing as Required for Clearance.
 ① 4 (H1 - 305) (H1 - 305) Rounded down to nearest 150 mm
 ② H1 - 75

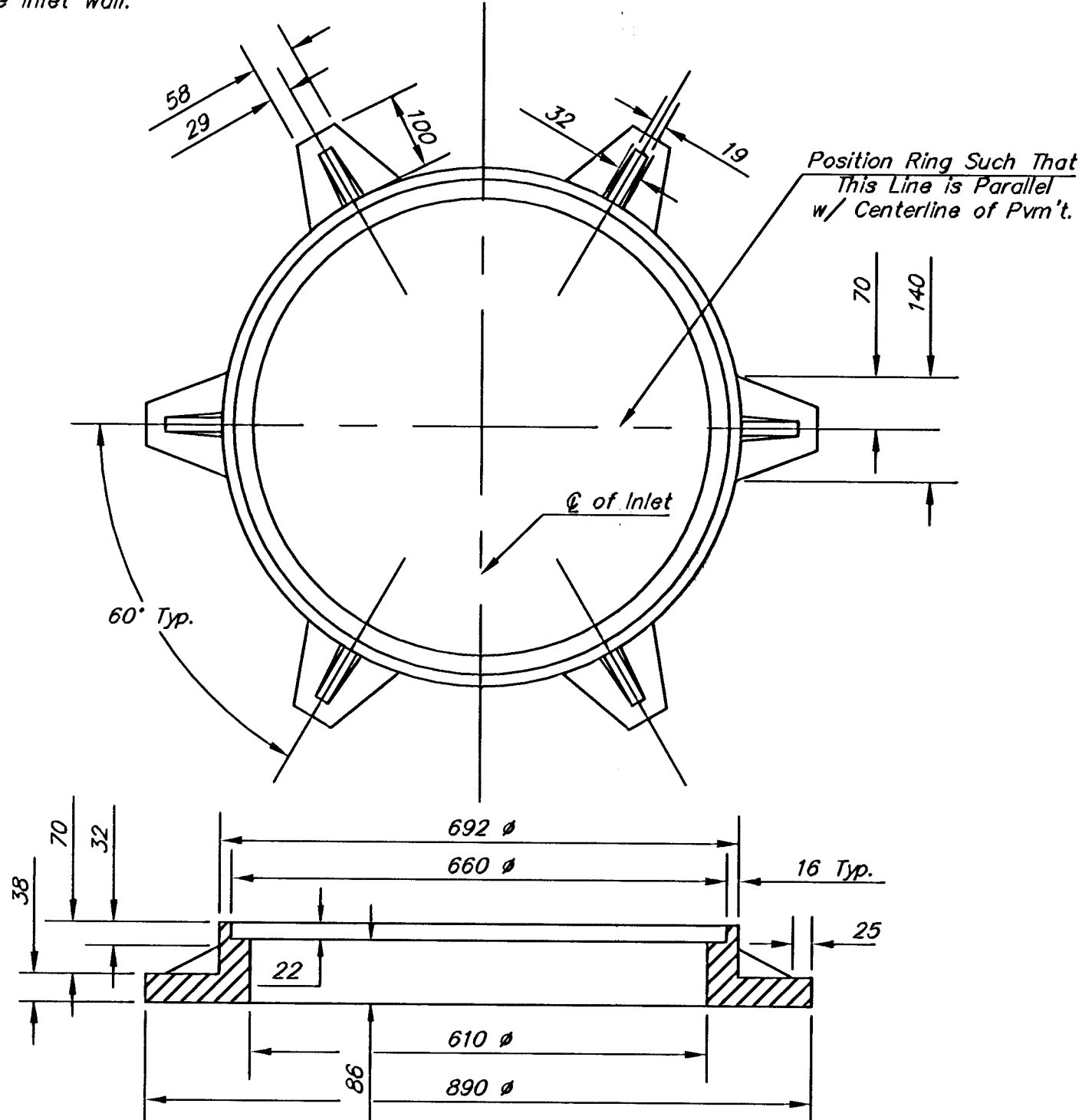


BENDING DIAGRAM

GENERAL NOTES:

- The contractor shall be required to construct 200 mm brick masonry walls between the concrete inlet base and top on this inlet when W=1 930 mm or less and H=2 135 mm or less. When W is greater than 1 930 mm and H is less than 2 135 mm the outside inlet walls below the brick stack shall be reinforced concrete construction and the center wall shall be of masonry construction as shown for the masonry wall option.
- Inlet invert shall be shaped with 8 sack sand mix concrete to create flow channels and to increase hydraulic efficiency such that the inlet will be self cleaning between all inlet and/or outlet pipes.
- Concrete tops to be installed on thin mortar cushion to insure full support along brick walls. Concrete tops may be cast in place or precast. Concrete used for inlet construction shall be concrete pavement mix.
- Inlet top reinforcing shall be spaced on 150 mm max. centers. Inlet lids shall be notched out as indicated to facilitate construction of curb. Bars in inlet top to be field bent or cut to clear manhole ring.
- The ends of all pipes installed in inlets shall be cut off flush with the inside face of the inlet wall.
- All dimensions are in millimeters.

STANDARD CURB INLET PRECAST TOPS				
W	PRE-CAST TOP SIZE	PIPE SIZE	CU. YD. CONC.	
1 320	1 120 x 3 455 x 190	550 & SMALLER	0.74±	
1 630	1 430 x 3 455 x 190	600 & 750	0.94±	
1 930	1 730 x 3 455 x 190	900 & 1050	1.14±	
2 240	2 040 x 3 455 x 190	1200 & 1350	1.34±	
2 540	2 340 x 3 455 x 190	1500 & 1650	1.54±	



MANHOLE RING AND COVER

Weight = 81.6 kg
 *See City of Wichita Standard Manhole Ring and Cover Detail Sheet for Cover Details to Be Used With Inlet Frame.

THE CITY OF WICHITA

STANDARD TYPE 1-A

CURB INLET

OPENING = 150 x 3 050

M. E. LINDEBAK P.E. - CITY ENGINEER

PROJECT NUMBER
87 N-0287-01

CITY ENGINEER'S OFFICE
CITY HALL - SEVENTH FLOOR
455 NORTH MAIN STREET
WICHITA, KANSAS 67202
(316) 268-4901
(316) 268-4114 FAX

INDEX CODE
XXXXXX

DATE
MAR 96

SHEET 38 OF 107