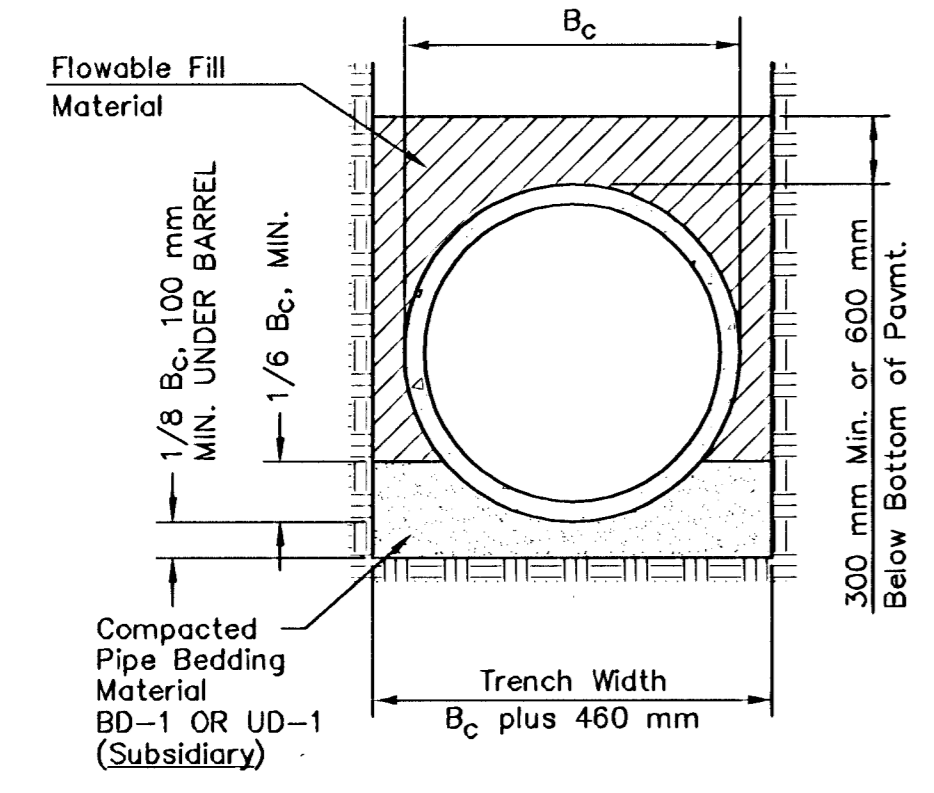
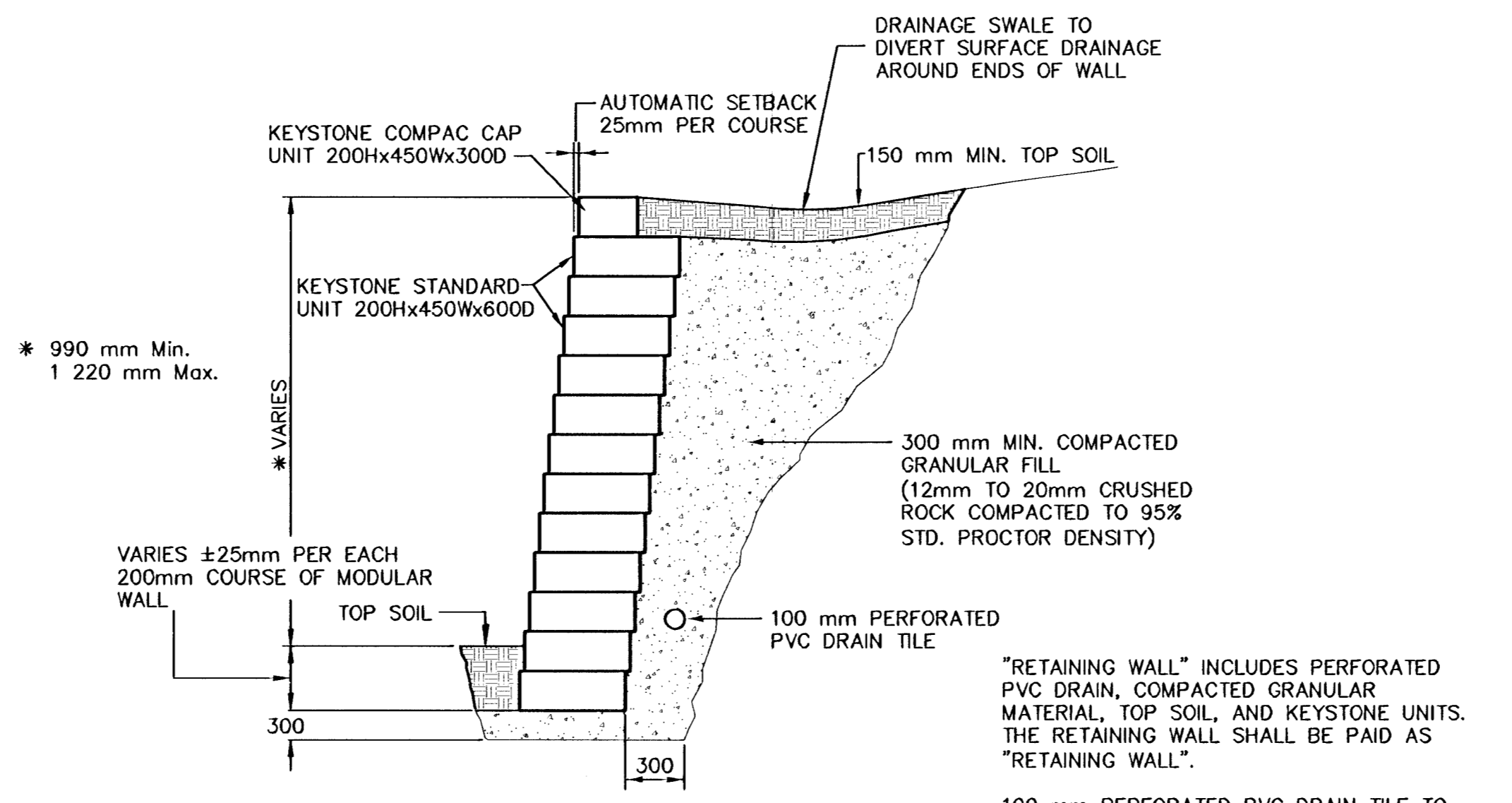


DATE	
BY	
REFERENCES NOTED	
REFERENCES CHECKED	

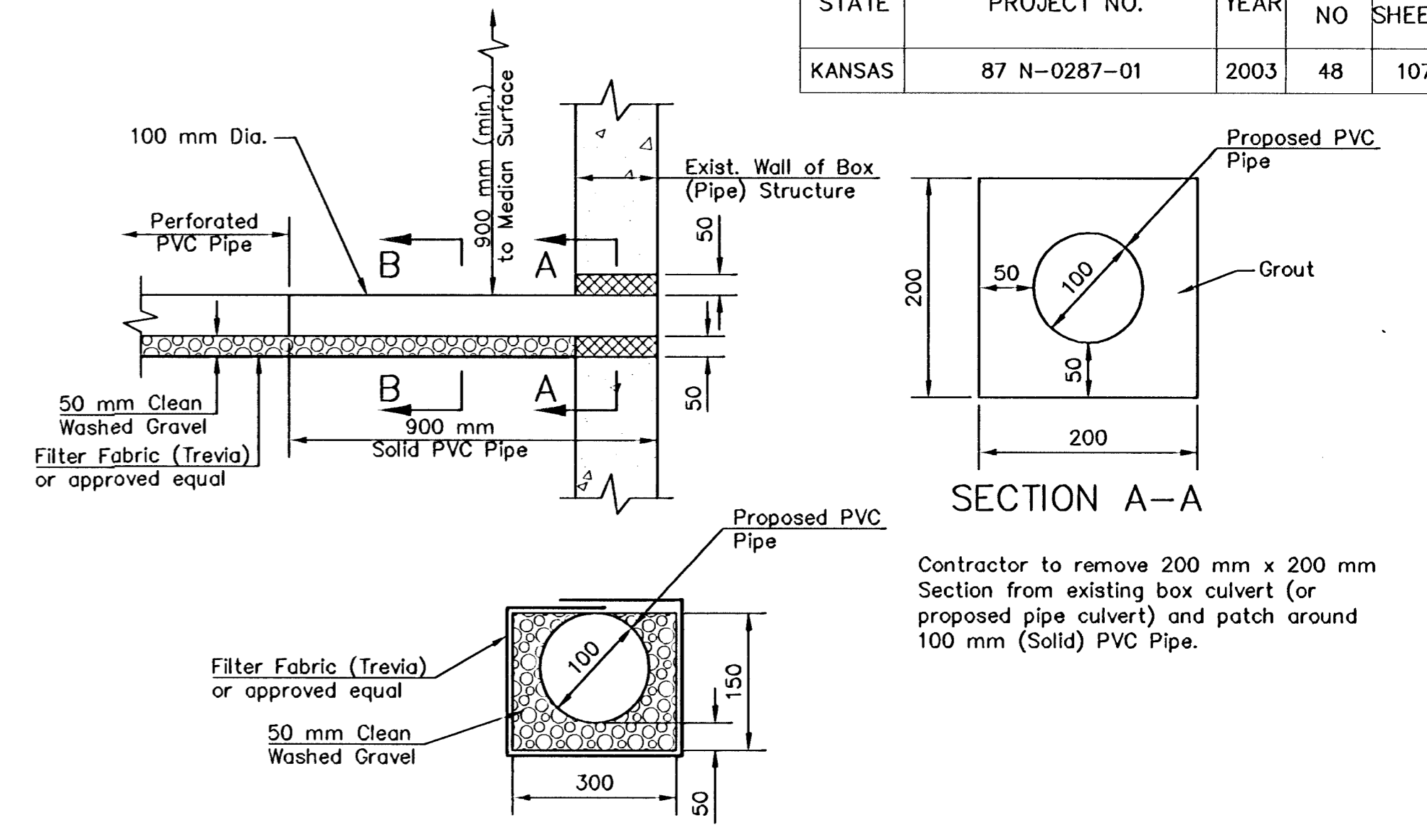
STATE	PROJECT NO.	YEAR	SHEET NO	TOTAL SHEETS
KANSAS	87 N-0287-01	2003	48	107



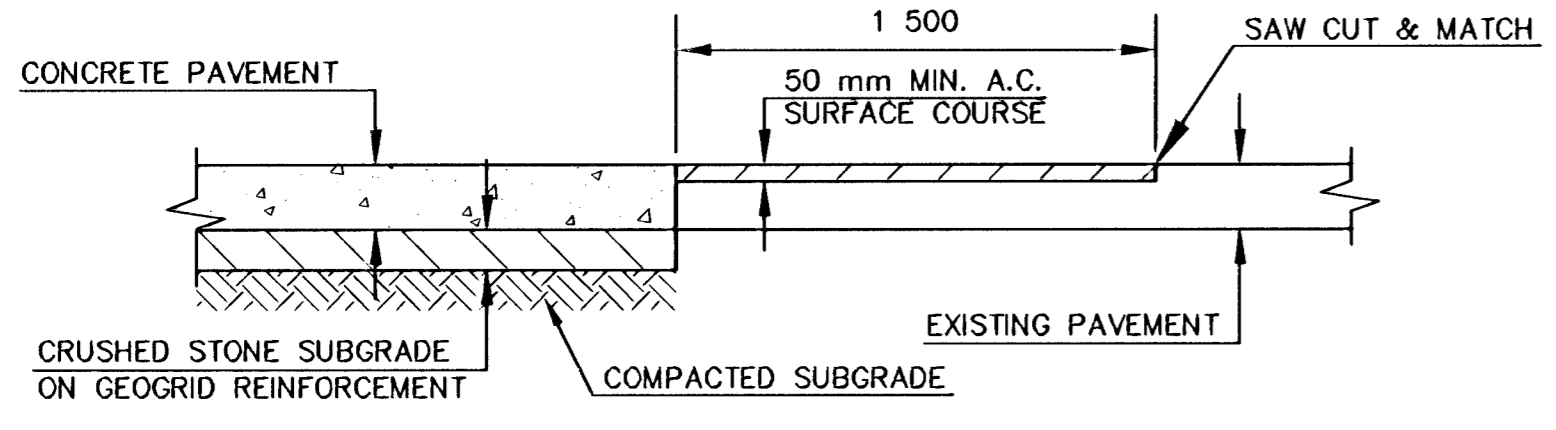
FLOWABLE FILL DETAIL
(For Storm Sewer Pipe)



MODULAR CONCRETE RETAINING WALL
29th. St. Sta. 1+795.730 to Sta. 1+834.814, Rt.

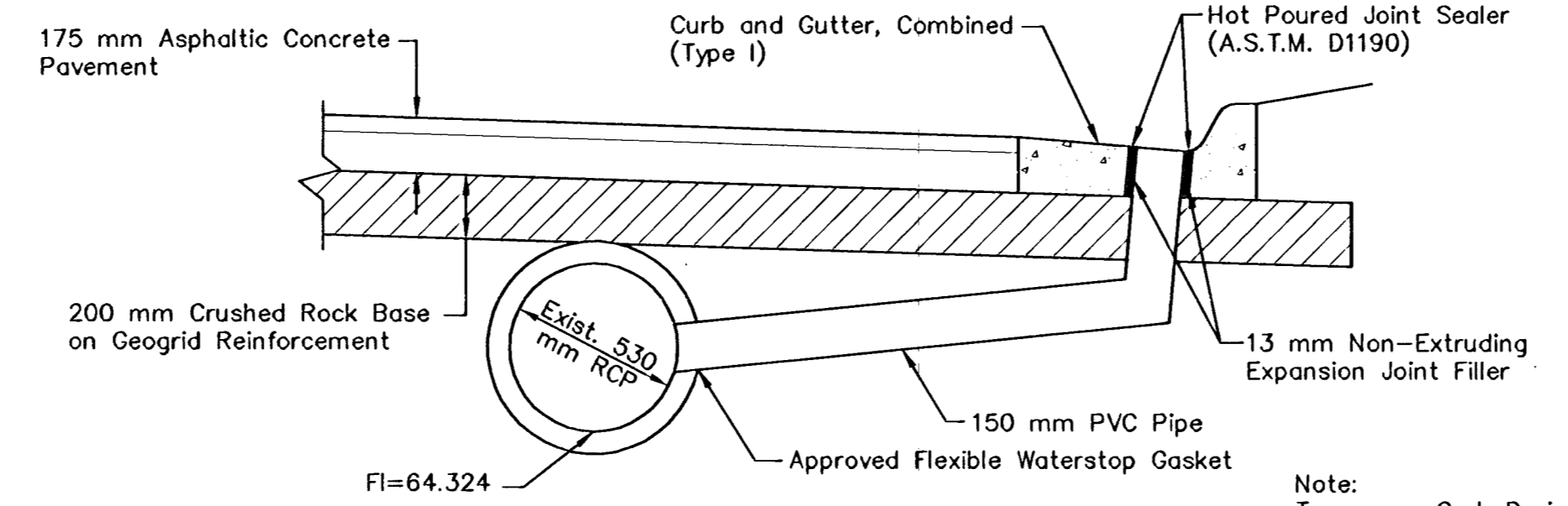


MEDIAN DRAIN CONNECTION DETAIL
Connections at Sta. 1+636, Sta. 1+641, Sta. 1+842, Sta. 1+844, Sta. 2+039, and Sta. 2+041

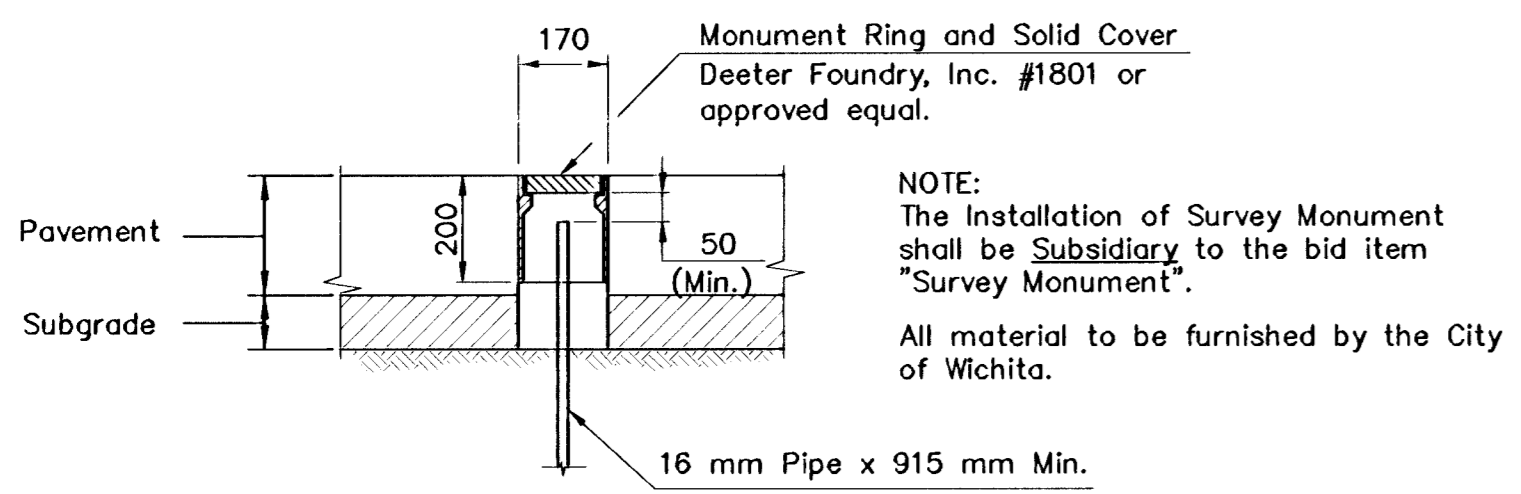


HOOKUP DETAIL

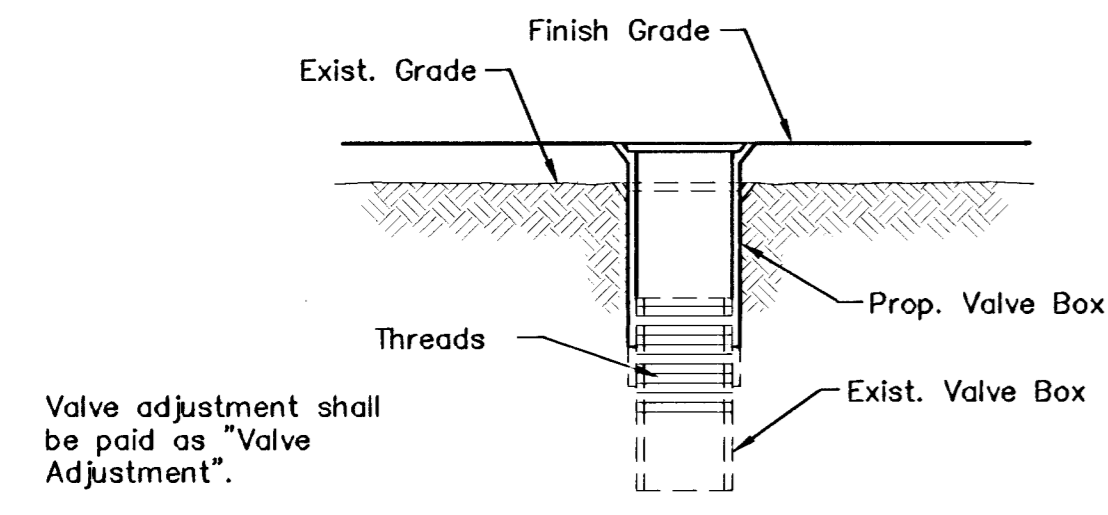
TYPICAL AT SIDE STREETS WITH EXISTING A.C. PAVEMENT (PENSTEMON, WILDERNESS, CYPRESS AND BENT TREE CIR.). COST SUBSIDIARY TO PROJECT.



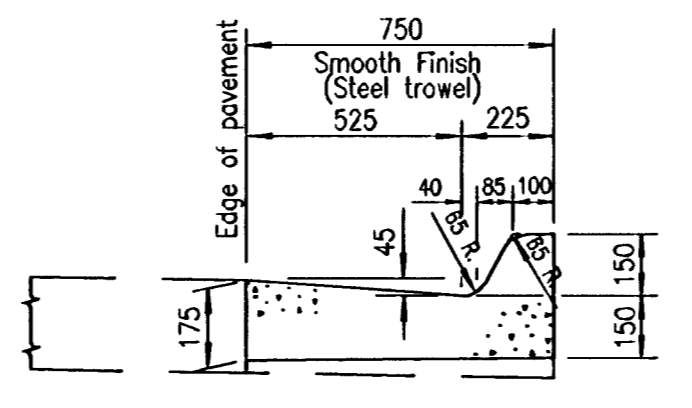
TEMPORARY CURB DRAIN
Rock Rd. Sta. 4+911.5, Rt.



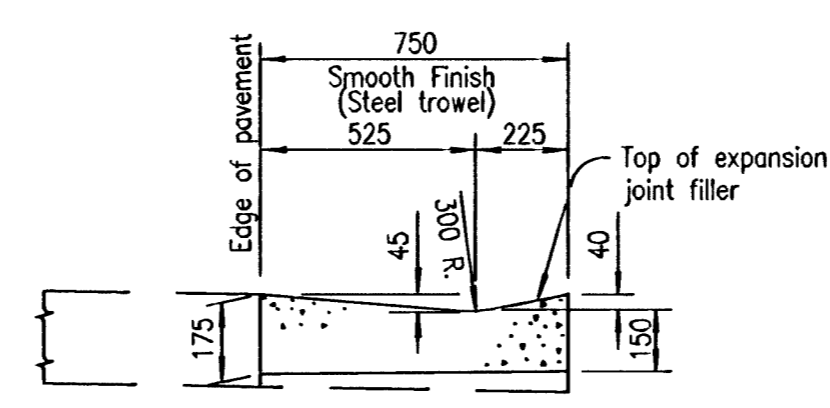
SURVEY MONUMENT DETAIL



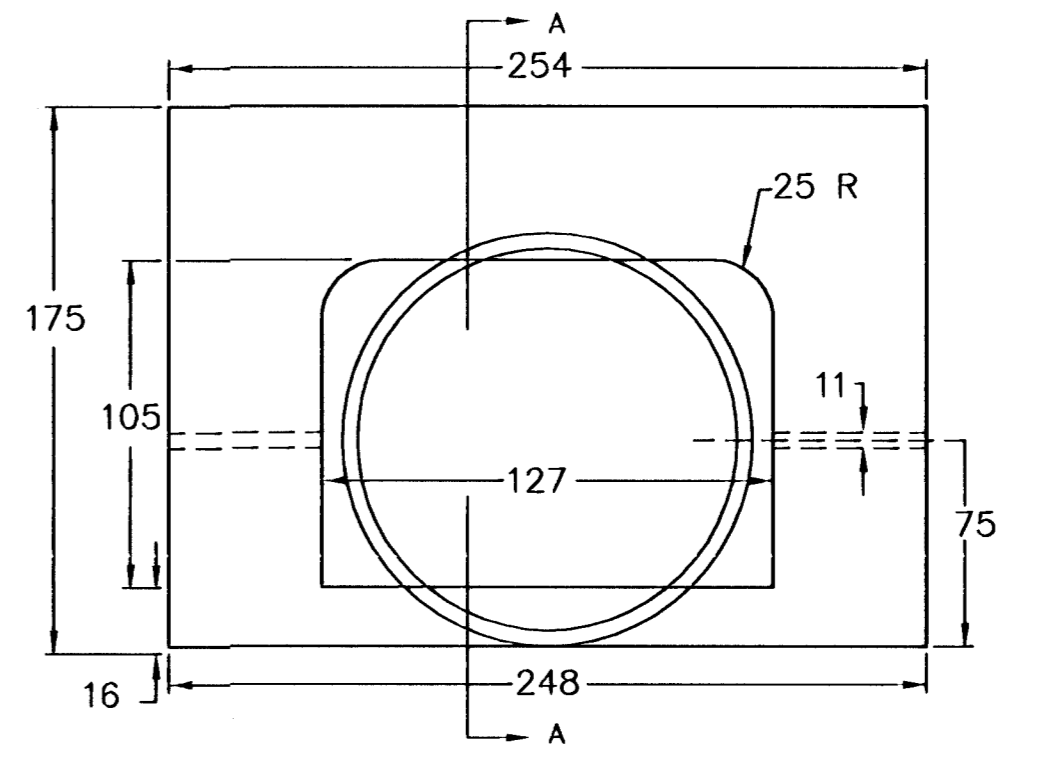
WATER VALVE BOX ADJUSTMENT DETAIL



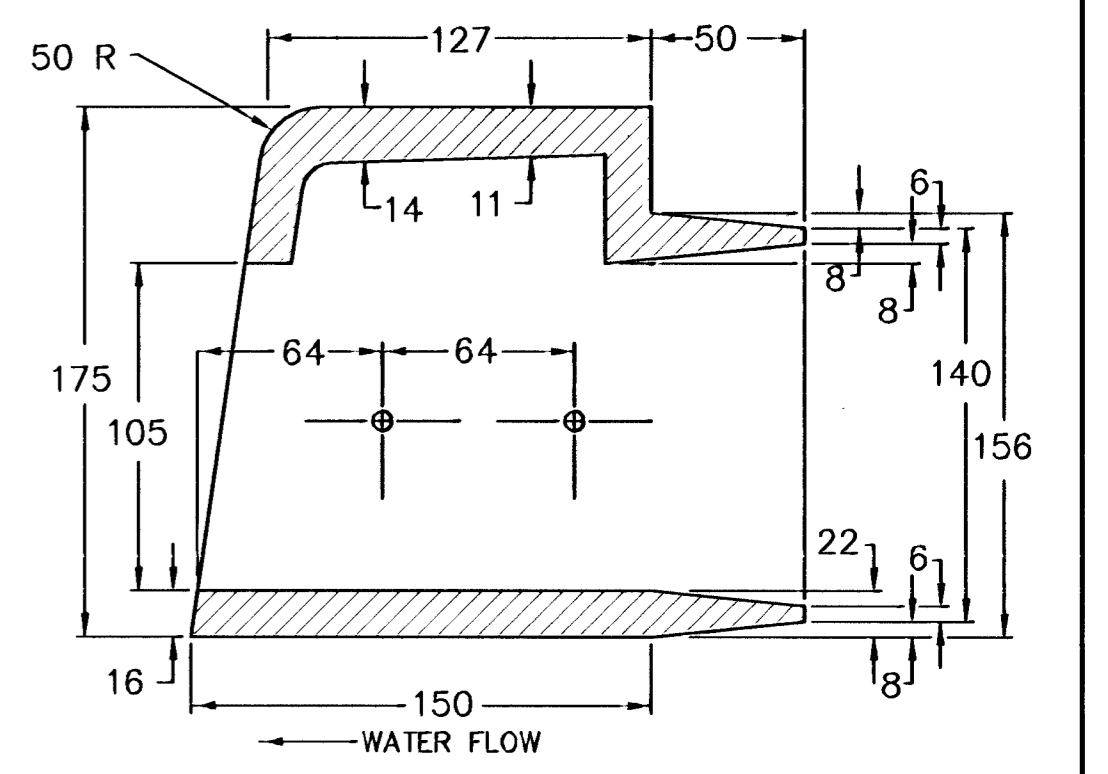
TYPICAL SECTION COMBINED CURB & GUTTER TYPE I (760 mm WIDTH)



TYPICAL SECTION COMBINED CURB & GUTTER TYPE II (760 mm WIDTH)



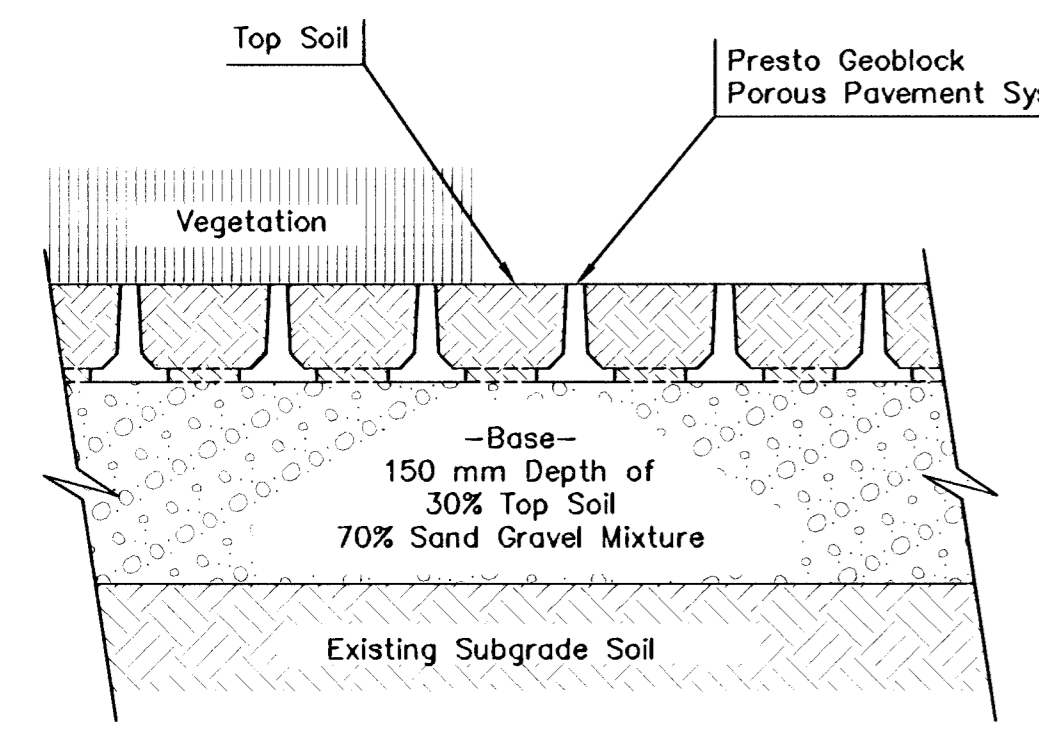
CURB CASTING DETAIL
@ Face of Curb



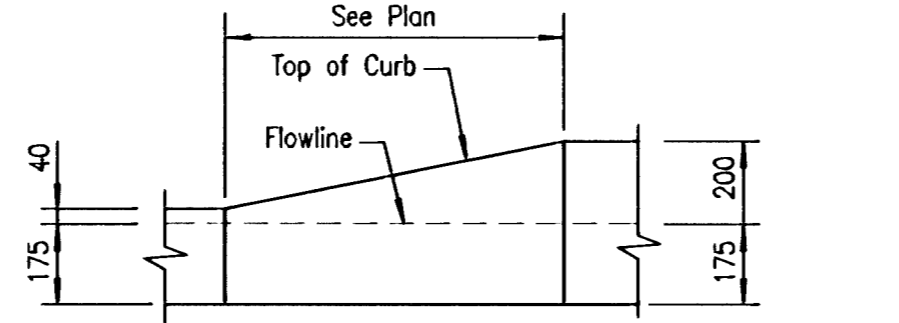
CURB CASTING SECTION A-A

NOTE: INSTALL CURB CASTING, DEETER #2449-8 OR APPROVED EQUAL, AT CURB & GUTTER. CASTING UNIT SHALL BE ANCHORED WITH GALVANIZED 32 mm X 64 mm BOLTS. CASTING SHALL BE PAINTED WITH TWO COATS OF GREY PAINT, APPLIED IN ACCORDANCE WITH MANUFACTURERS RECOMMENDATION.

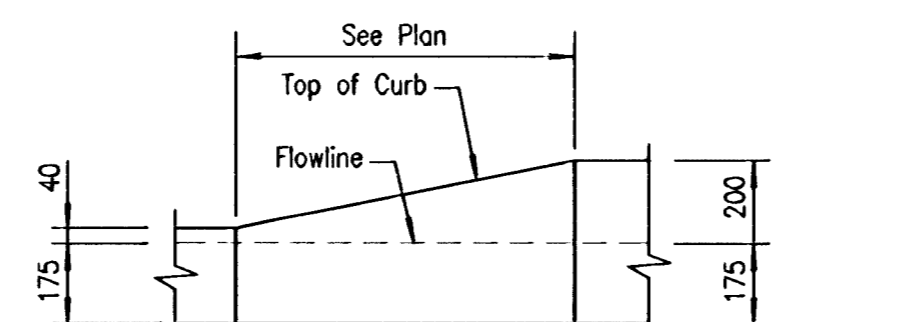
2				
1	DATE	REVISIONS	BY	APP'D
KANSAS DEPARTMENT OF TRANSPORTATION				
29TH. STREET NORTH MISC. DETAILS				
PROJ. NO. 87 N-0287-01			SEDGWICK CO.	
MKEC ENGINEERING CONSULTANTS, INC.				
WICHITA, KANSAS				
DESIGNED BY:	ASH	CHECKED BY:	GJA	
DRAWN BY:	WNJ	DATE:	11/2002	SHEET 48 OF 107



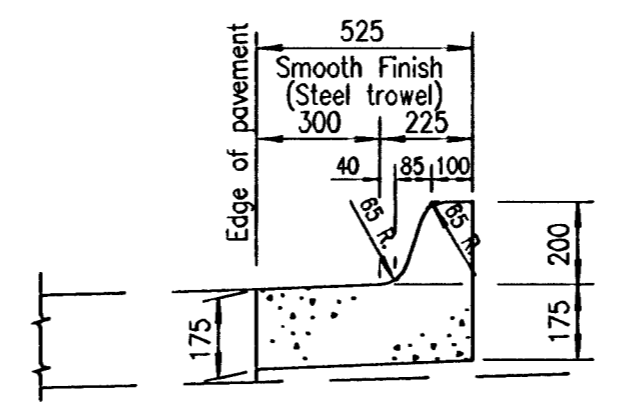
GEOBLOCK DETAIL
29th St. Sta. 1+252.0



MONOLITHIC EDGE CURB TRANSITION



COMBINED CURB & GUTTER TRANSITION TYPE III (525 mm WIDTH)



TYPICAL SECTION COMBINED CURB & GUTTER TYPE III (525 mm WIDTH)