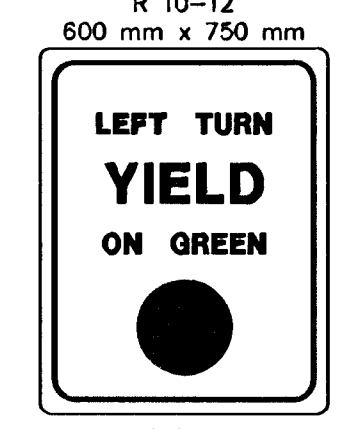



STATE	PROJECT NO.	YEAR	SHEET NO	TOTAL SHEETS
KANSAS	87 N-0287-01	2003	57	107

STANDARD SIGNING
R 10-12
600 mm x 750 mm

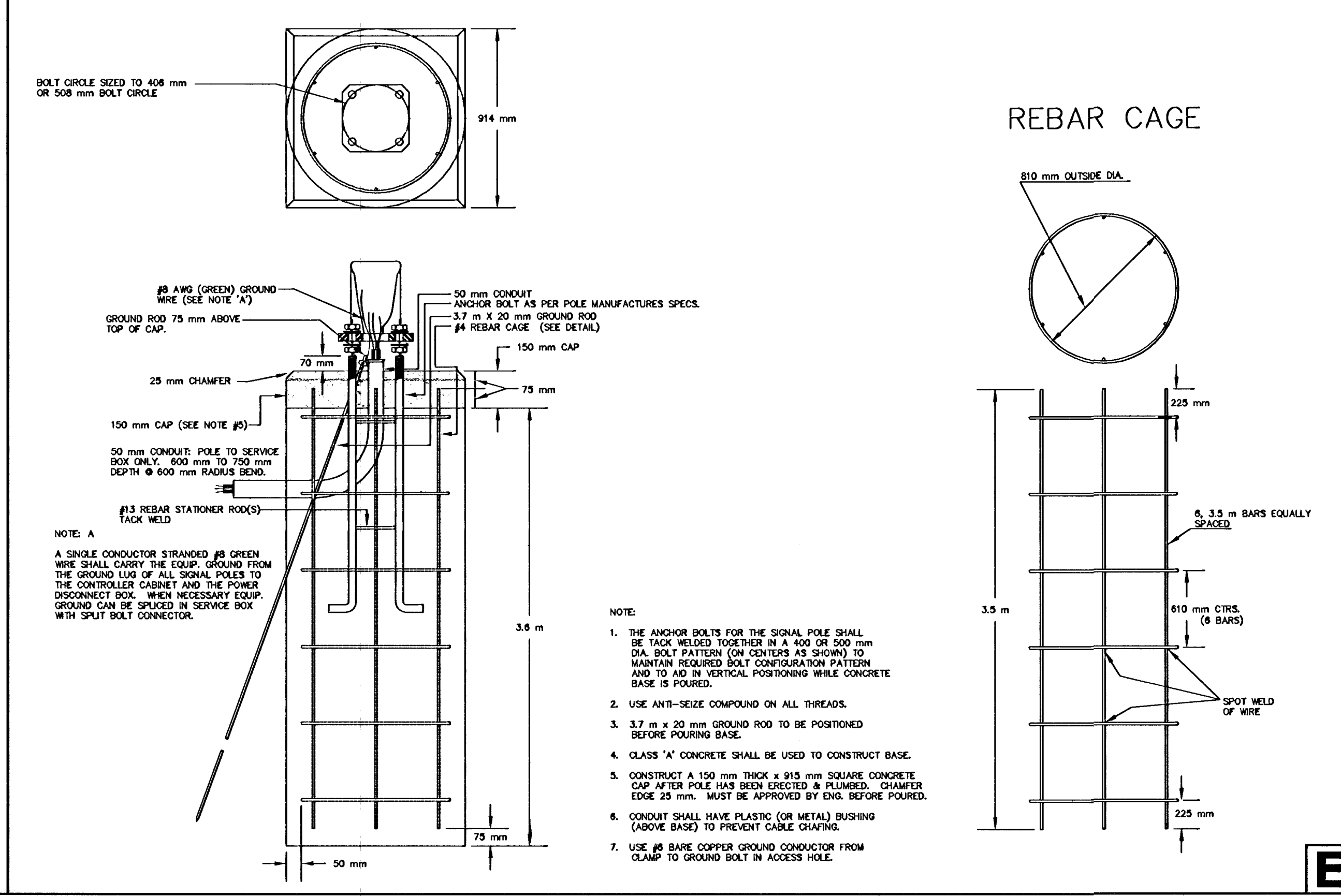
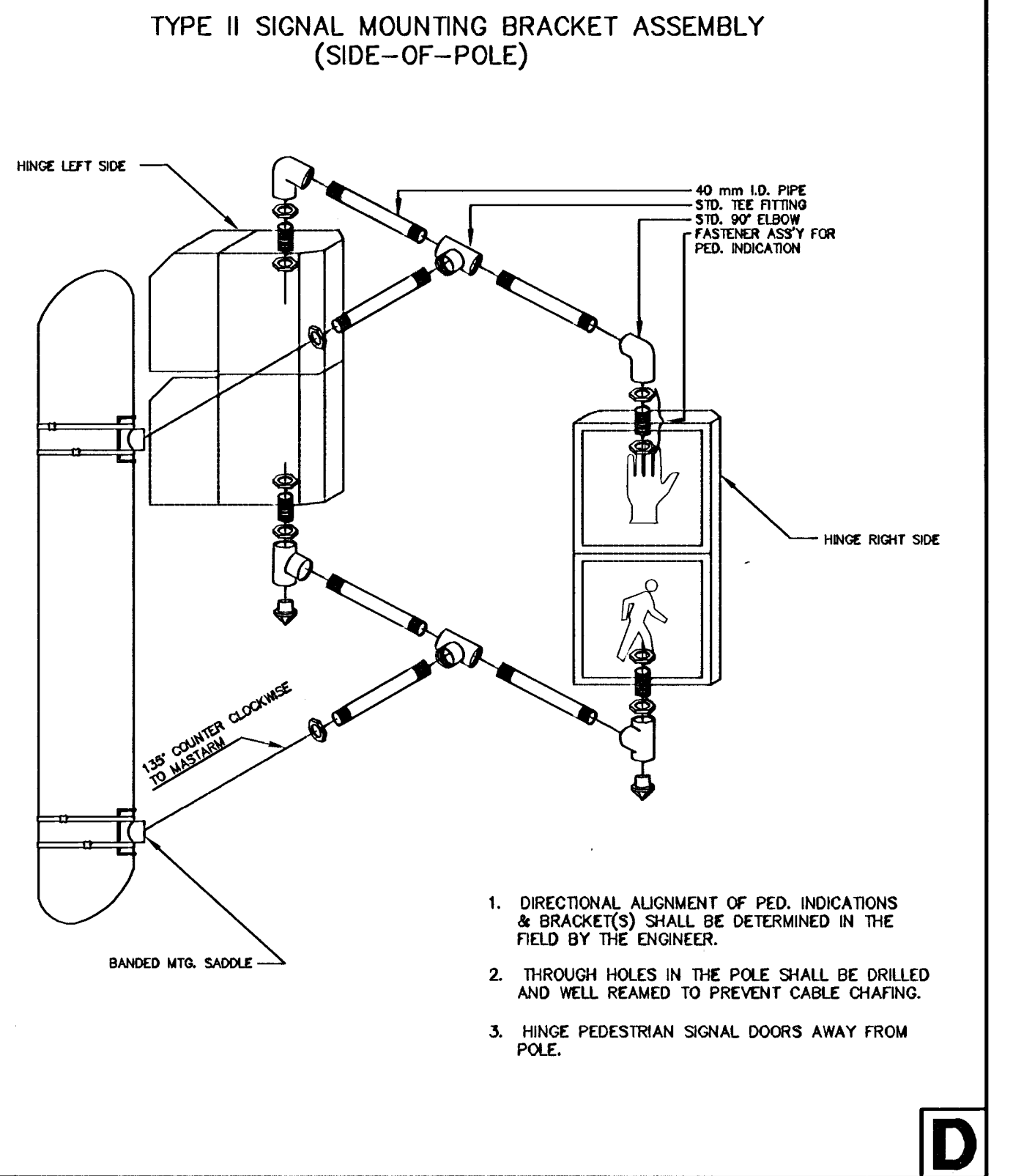
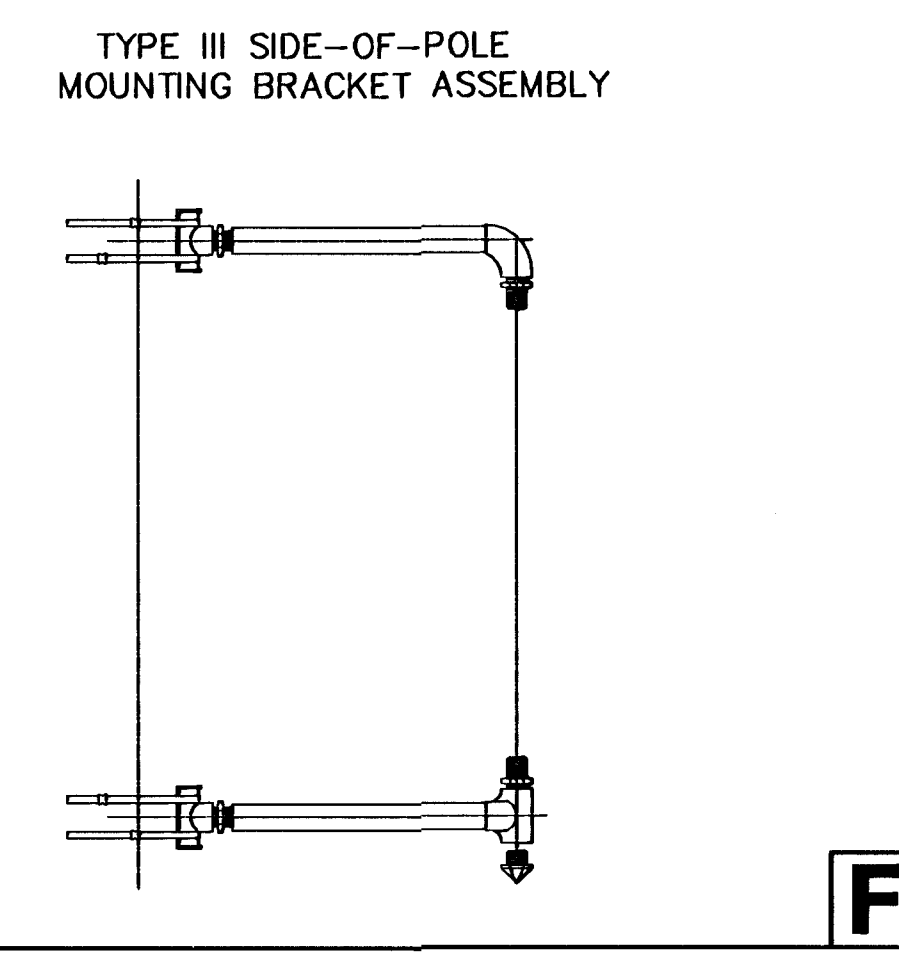
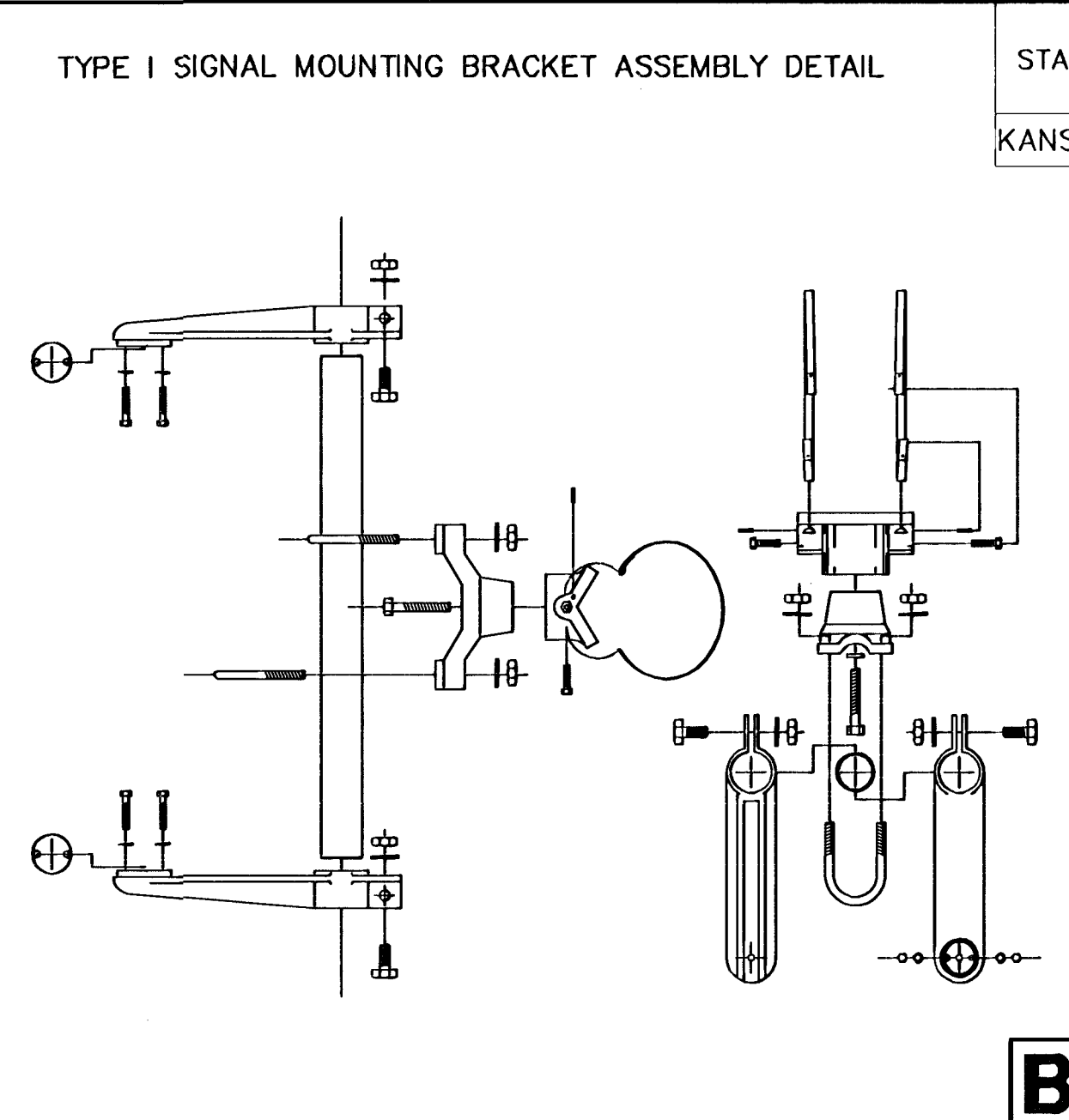
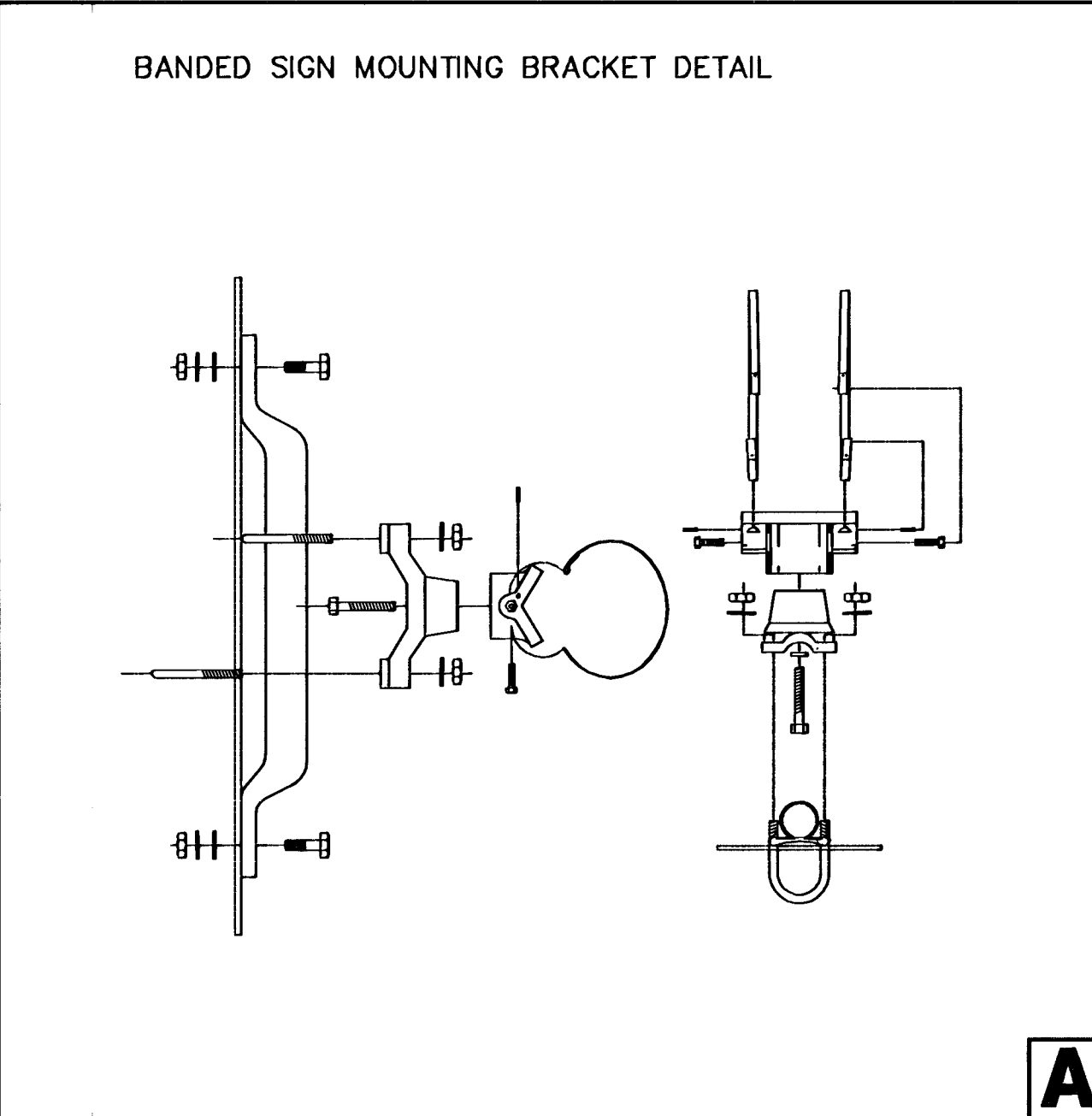
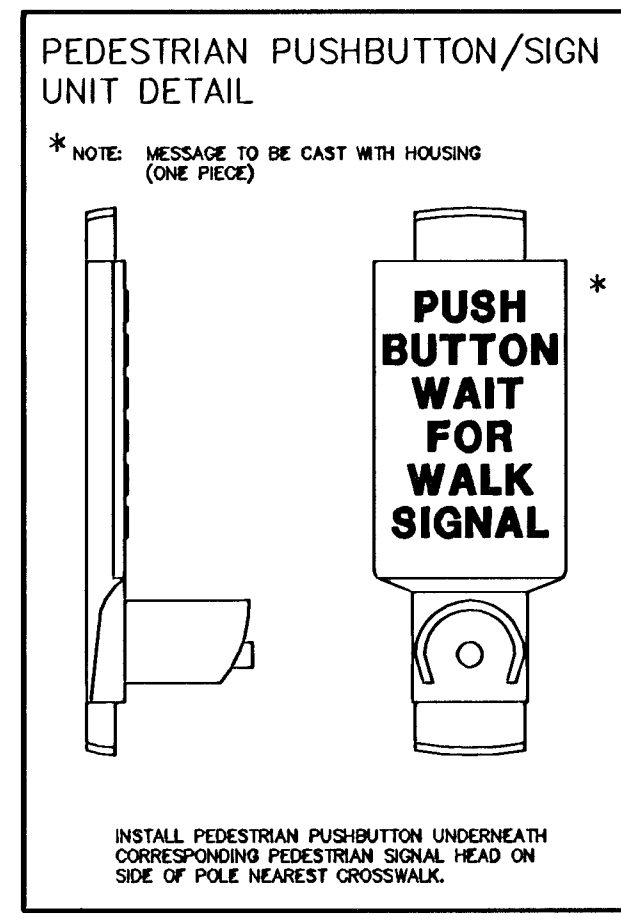
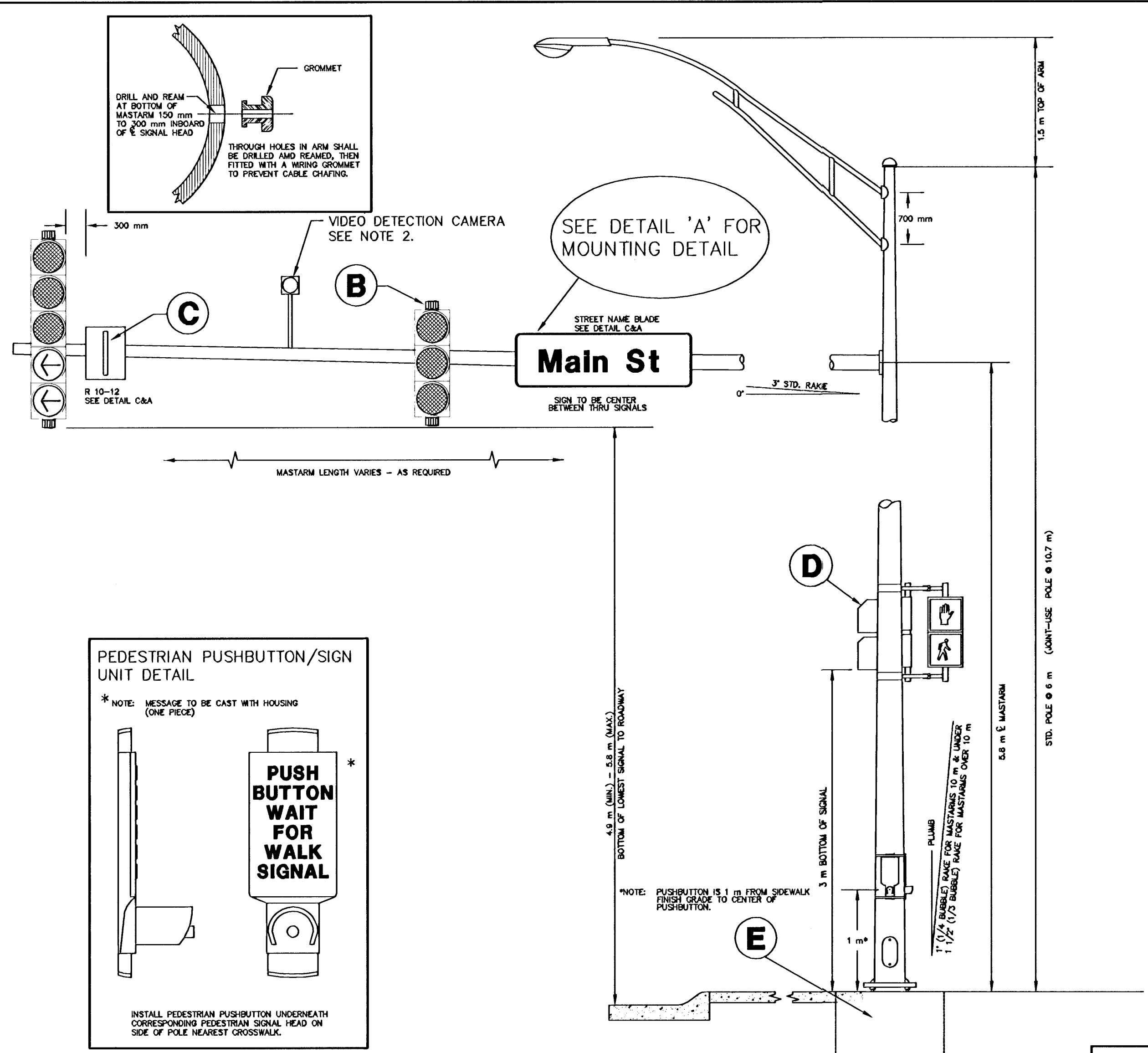


SEE DETAIL "A" FOR MOUNTING HARDWARE

1.5 m x 450 mm



SEE DETAIL "A" FOR MOUNTING HARDWARE USE 2 PER SIGN



PROJECT DESCRIPTION

STEEL SIGNAL POLE ASSEMBLY DETAILS

PROJECT NUMBER

DRAWN BY: T.M.	APPROVED BY:	REVISED BY: T.M.
DATE: FEB. 96		DATE: MAY97

CITY OF WICHITA
DEPARTMENT OF PUBLIC WORKS

DIVISION OF TRAFFIC ENGINEERING	SCALE
WM. G. MCKINLEY TRAFFIC ENGINEER	NO SCALE

DATE	
BY	
REFERENCES NOTED	
REFERENCES CHECKED	

NOTES:

- Special Finish for Traffic Signal Structures: All exterior surfaces are coated with a zinc rich epoxy powder to a minimum dry film thickness of 2.0 mils. The coating is electrostatically applied and partially cured in a gas fired convection oven by heating the steel substrate to a minimum of 121 degrees Celsius.

The powder primed surface is coated with an intermediate coat of polyester powder to a minimum film thickness of 2.0 mils. The coating is electrostatically applied and cured by heating the substrate in a convection oven to minimum of 177 degrees and a maximum of 204 degrees Celsius.

The intermediate coat is top coated with one coat of high-build acrylic polyurethane enamel to a minimum dry film thickness of 2.0 mils. The coating is electrostatically applied and cured by heating the substrate in a convection oven to minimum of 107 degrees Celsius. The final top coating shall be black.

The color of exterior surfaces of all structures, signal heads, brackets, equipment, cabinets, covers, panels, and components shall be matching black, unless otherwise noted.
- Exact Video Detection Camera locations to be at the direction of the Manufacturer's Representative. Video Camera cable terminations, camera fine tuning, system set-up and programming will be performed by the supplier with the assistance of the contractor.