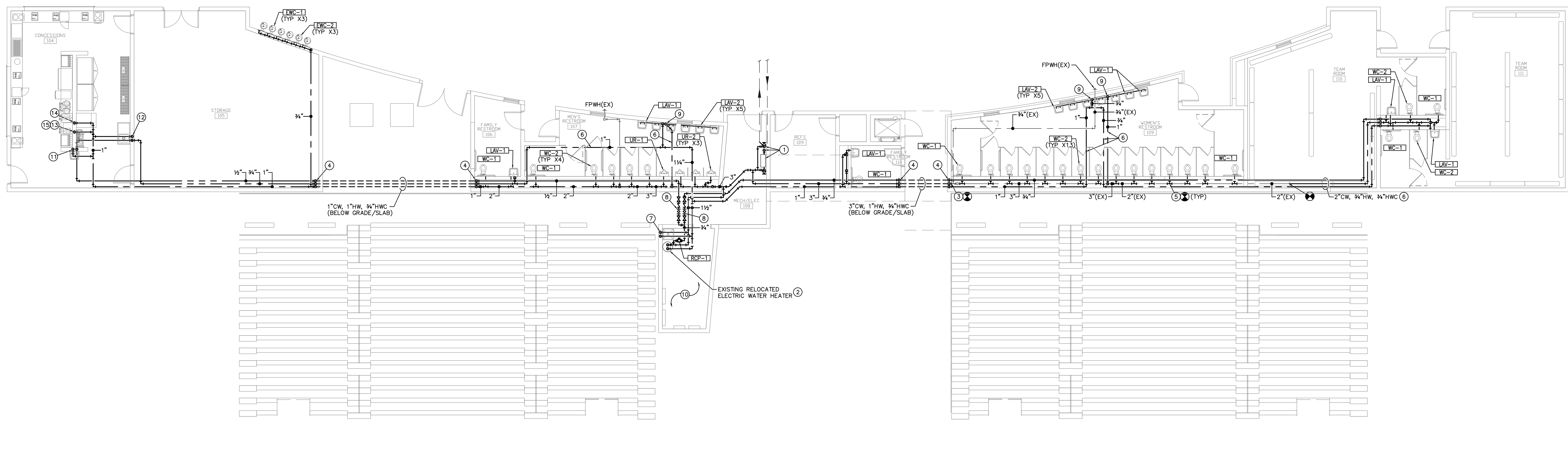


- KEYED NOTES**
1. EXTEND NEW 3" CW BUILDING ENTRY UP FROM BELOW GRADE IN THIS LOCATION. ROUTE NEW 3" CW TO RELOCATED BACKFLOW PREVENTER RETAINED DURING DEMOLITION. EXTEND NEW 1" CW DOWN BELOW GRADE TO EXISTING CW TO YARD HYDRANTS. FIELD VERIFY EXACT LOCATION AND CONNECTION REQUIREMENTS. PROVIDE SHUT-OFF VALVES PRIOR TO CONNECTION TO BACKFLOW PREVENTER (BOTH INLET AND OUTLET SIDES), AND BEFORE CONNECTION TO EXISTING YARD HYDRANT PIPING.
 2. EXTEND NEW 1/2" CW/HW DOWN TO RELOCATED WATER HEATER RETAINED DURING DEMOLITION. MAKE FINAL CONNECTION TO WATER HEATER PER MANUFACTURERS RECOMMENDATIONS. REFER TO WATER HEATER DETAIL FOR ADDITIONAL INFORMATION.
 3. CONNECT NEW 3" CW MAIN TO EXISTING 3" CW MAIN IN CHASE AS SHOWN. FIELD VERIFY EXACT LOCATION AND CONNECTION REQUIREMENTS.
 4. EXTEND CW/HW DOWN BELOW GRADE SLAB IN THIS LOCATION AS SHOWN. CW/HW PIPING DOWN IN EXTERIOR WALL SHALL BE LOCATED ON THE UNCONDITIONED SIDE OF THE INSULATION SUCH THAT PIPING WILL NOT FREEZE.
 5. EXTEND NEW 1/2" CW FROM WATER CLOSET FLUSH VALVE TO EXISTING CW MAIN IN CHASE AS SHOWN.
 6. ROUTE PIPING EXPOSED OVERHEAD IN THIS AREA. HOLD PIPING TIGHT TO STRUCTURE ABOVE.
 7. EXTEND NEW 3/4" CW/HW DOWN TO EXISTING MOP BASIN FAUCET IN THIS AREA. MAKE FINAL CONNECTION TO FAUCET PER MANUFACTURERS RECOMMENDATIONS.
 8. CONTRACTOR TO PROVIDE AND INSTALL MODEL ICSS075L-3/4-20PM FLOW DESIGN INC. CIRCUIT SETTER. ALL EQUALS TO BE SUBMITTED TO ENGINEER FOR APPROVAL PRIOR TO INSTALLATION.
 9. EXTEND 1" CW/HW DOWN EXPOSED ON WALL TO BELOW LAVATORIES IN THIS AREA. EXTEND 1" CW/HW HEADER BELOW LAVATORIES AND 1/2" CW/HW SUPPLY PIPING TO EACH LAVATORY.
 10. DO NOT ROUTE ANY PLUMBING PIPING OVER ELECTRICAL GEAR. FIELD VERIFY EXACT ELECTRICAL GEAR LOCATIONS.
 11. EXTEND 1/2" CW/HW DOWN IN WALL TO KITCHEN SUPPLIER PROVIDED HAND SINK. MAKE FINAL CONNECTION PER MANUFACTURERS RECOMMENDATIONS.
 12. EXTEND 3/4" CW/HW DOWN IN WALL TO KITCHEN SUPPLIER PROVIDED SINK. MAKE FINAL CONNECTION PER MANUFACTURERS RECOMMENDATIONS.
 13. EXTEND 1/2" CW DOWN TO KITCHEN SUPPLIER PROVIDE COFFEE MAKER. MAKE FINAL CONNECTION TO EQUIPMENT PER MANUFACTURERS RECOMMENDATIONS.
 14. EXTEND 1/2" CW DOWN TO KITCHEN SUPPLIER PROVIDE ICE MAKER. MAKE FINAL CONNECTION TO EQUIPMENT PER MANUFACTURERS RECOMMENDATIONS.
 15. EXTEND 1/2" CW DOWN TO KITCHEN SUPPLIER PROVIDE TEA DISPENSER. MAKE FINAL CONNECTION TO EQUIPMENT PER MANUFACTURERS RECOMMENDATIONS.



DOMESTIC WATER PLAN
 SCALE: 1/8" = 1'-0"
 SCALE: 1/8"=1'-0"
 0 2 4 8 16

INTERIOR REMODEL
STRYKER SPORTS
 WICHITA, KANSAS

©2018 MKEC Engineering
 All Rights Reserved
 www.mkec.com
 These drawings and their contents, including but not limited to, all concepts, designs, & notes are the exclusive property of MKEC Engineering (MKEC), and may not be used or reproduced in any way without the express consent of MKEC.

WATER & GAS PLAN

PROJECT NO.	1701010567	
DATE	03-07-18	
SCALE	AS NOTED	
DESIGNED	DRAWN	CHECKED
CJK	CJK	RLB

NO.	REVISION	DATE

SHEET NO.
 SP3.0

J:\PROJECTS\2017\1701010567_COW_STRYKER_170607_CAD\SHOTS\1800_MESSSTADIUM_PACKAGER\UMBSP3.SP3_1.WATER & GAS PLAN.DWG