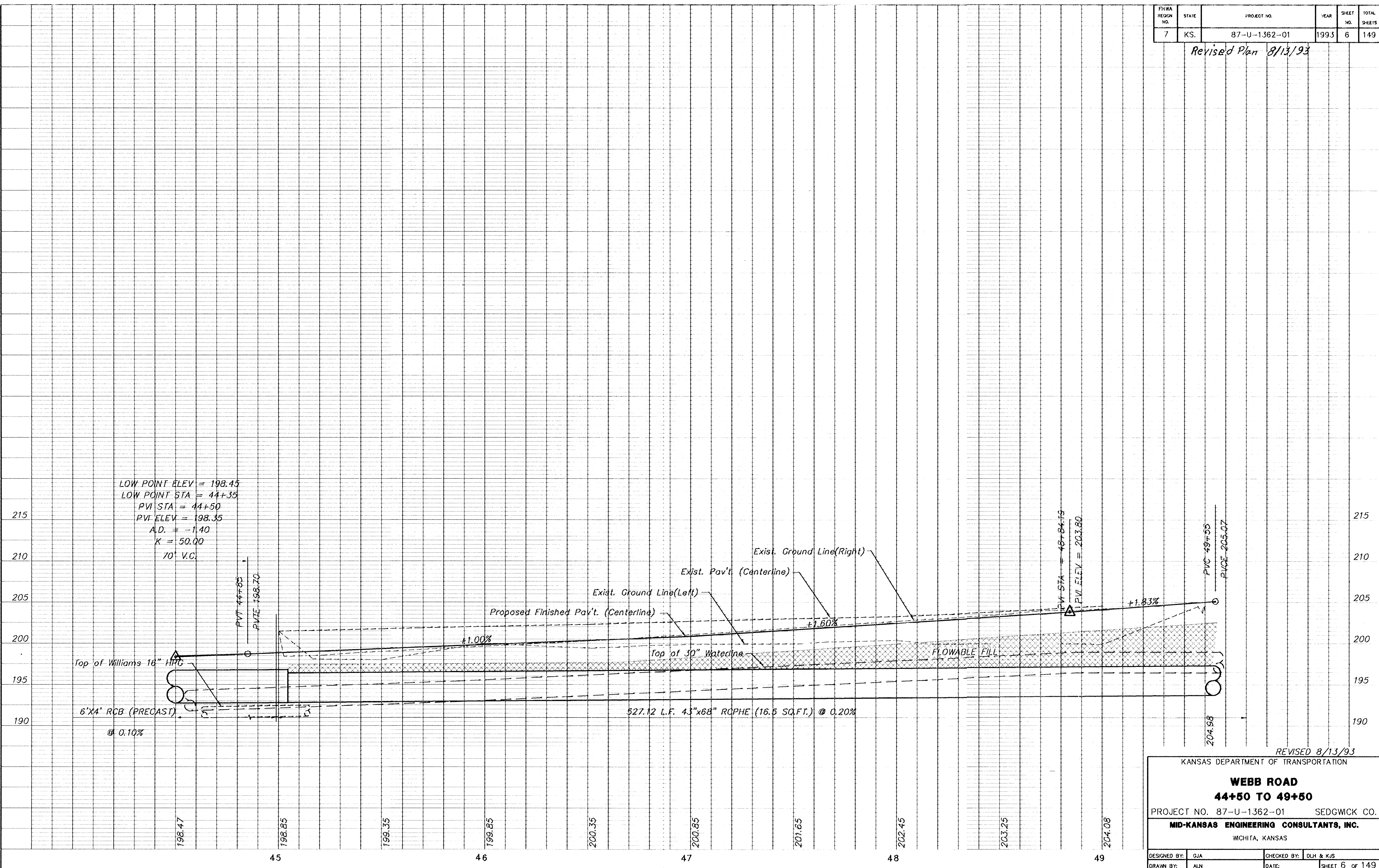


FHWA REGION NO.	STATE	PROJECT NO.	YEAR	SHEET NO.	TOTAL SHEETS
7	KS.	87-U-1362-01	1993	6	149

Revised Plan 8/13/93



LOW POINT ELEV = 198.45
 LOW POINT STA = 44+35
 PVI STA = 44+50
 PVI ELEV = 198.35
 A.D. = -1.40
 K = 50.00
 70' V.C.

REVISED 8/13/93
 KANSAS DEPARTMENT OF TRANSPORTATION

WEBB ROAD
44+50 TO 49+50

PROJECT NO. 87-U-1362-01 SEDGWICK CO.
 MID-KANSAS ENGINEERING CONSULTANTS, INC.
 WICHITA, KANSAS

DESIGNED BY: GJA	CHECKED BY: DLH & KJS
DRAWN BY: ALN	DATE: SHEET 6 OF 149

Revised