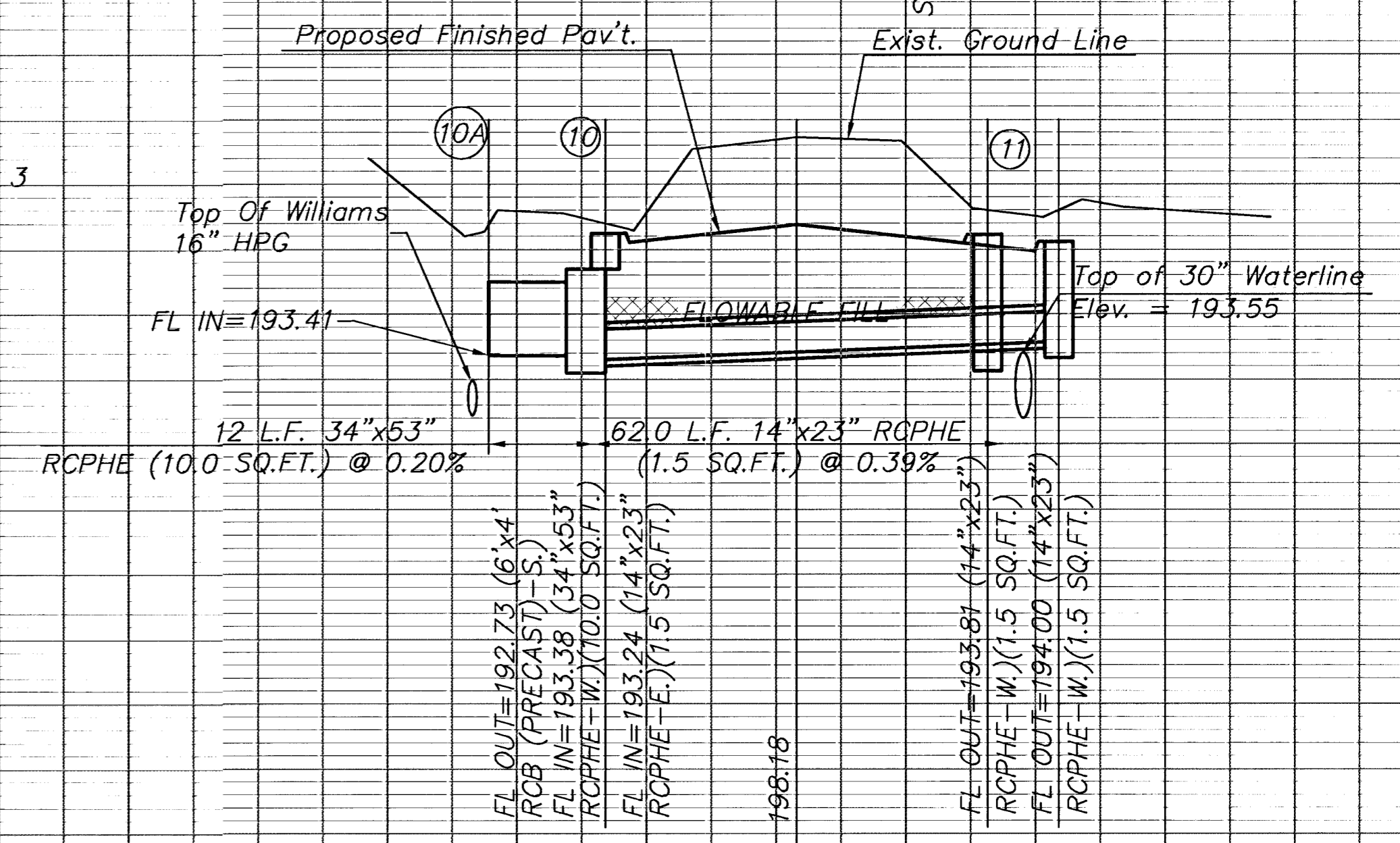
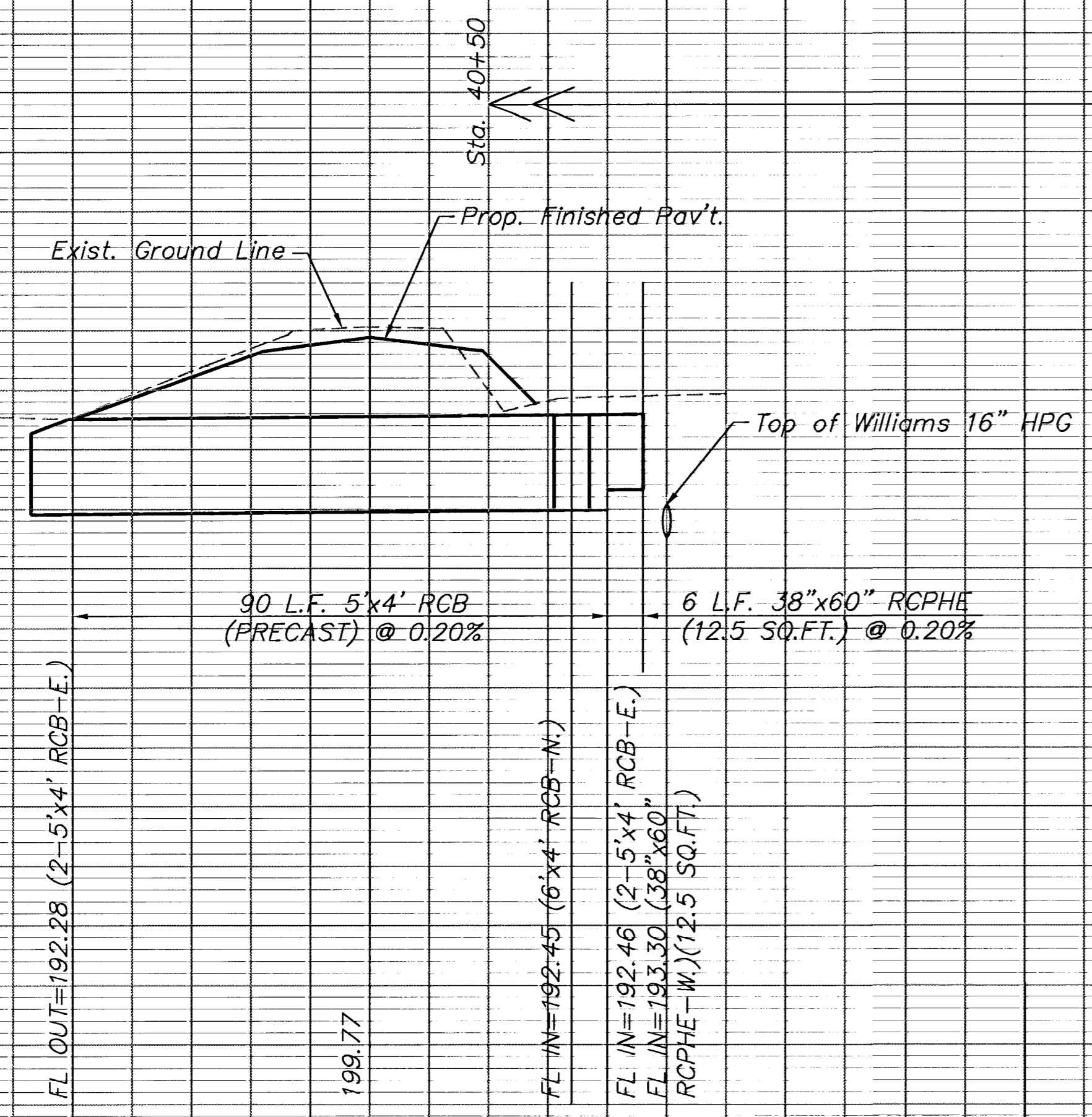
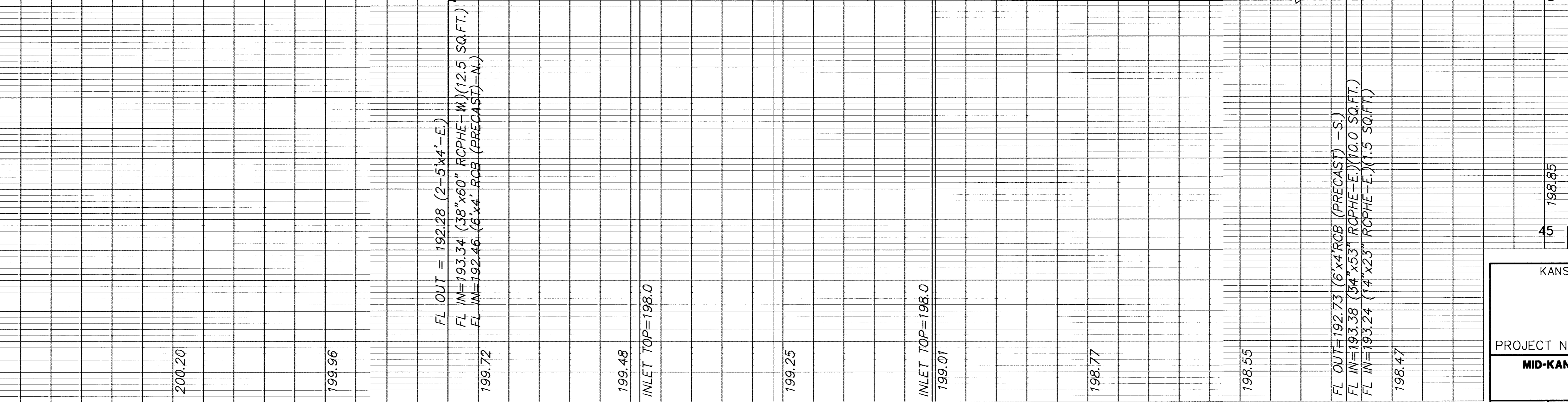
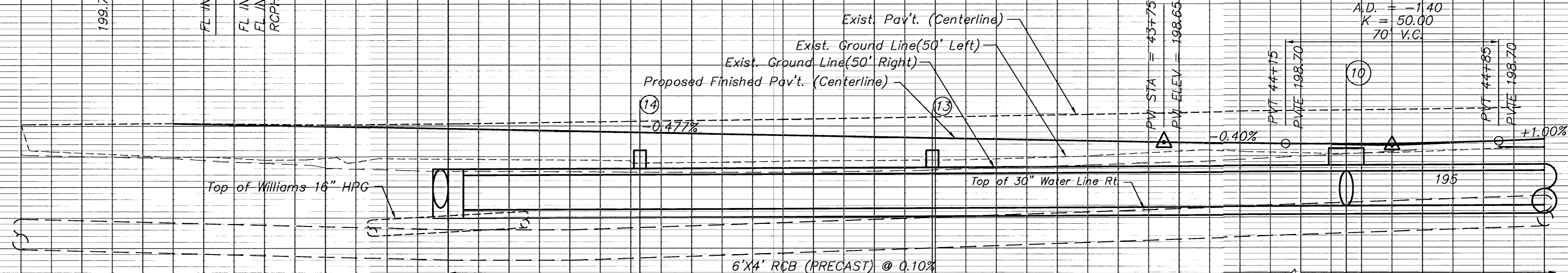


Revised: See Bottom of Sheet.

- * 51,820 Cu. Yds. Common Excavation (V.M.F.=0.8)
- + 1,200 Cu. Yds. Rock Excavation
- ** 5,250 Cu. Yds. Embankment
- * Incl. 39,600 Cu. Yds. of Common Excavation From Webb Road
- 8,020 Cu. Yds. of Common Excavation From 21st. Street
- 4,200 Cu. Yds. of Common Excavation From Drainage Ditch, Rt. Sta. 41+50
- 45,258 Cu. Yds. of Common Excavation Wasted on Sites Provided by the Contractor (see General Notes) See Sheet No. 3
- + Incl. 1,200 Cu. Yds. Rock Excavation to be Wasted on Sites Provided by the Contractor (see General Notes) See Sheet No. 3
- ** Incl. 1,800 Cu. Yds. of Embankment on Webb Road
- 1,250 Cu. Yds. of Embankment on 21st. Street



LOW POINT ELEV = 198.45
 LOW POINT STA = 44+35
 PVI STA = 44+50
 PVI ELEV = 198.35
 A.D. = -1.40
 K = 50.00
 70' V.C.



Revised: 11-13-93, Inlet at Sta. 44+35

KANSAS DEPARTMENT OF TRANSPORTATION

WEBB ROAD
40+00 TO 45+00

PROJECT NO. 87-U-1362-01 SEDGWICK CO.

MID-KANSAS ENGINEERING CONSULTANTS, INC.
 WICHITA, KANSAS

DESIGNED BY: GJA CHECKED BY: DLH & KJS
 DRAWN BY: ALN DATE: SHEET 4 OF 149