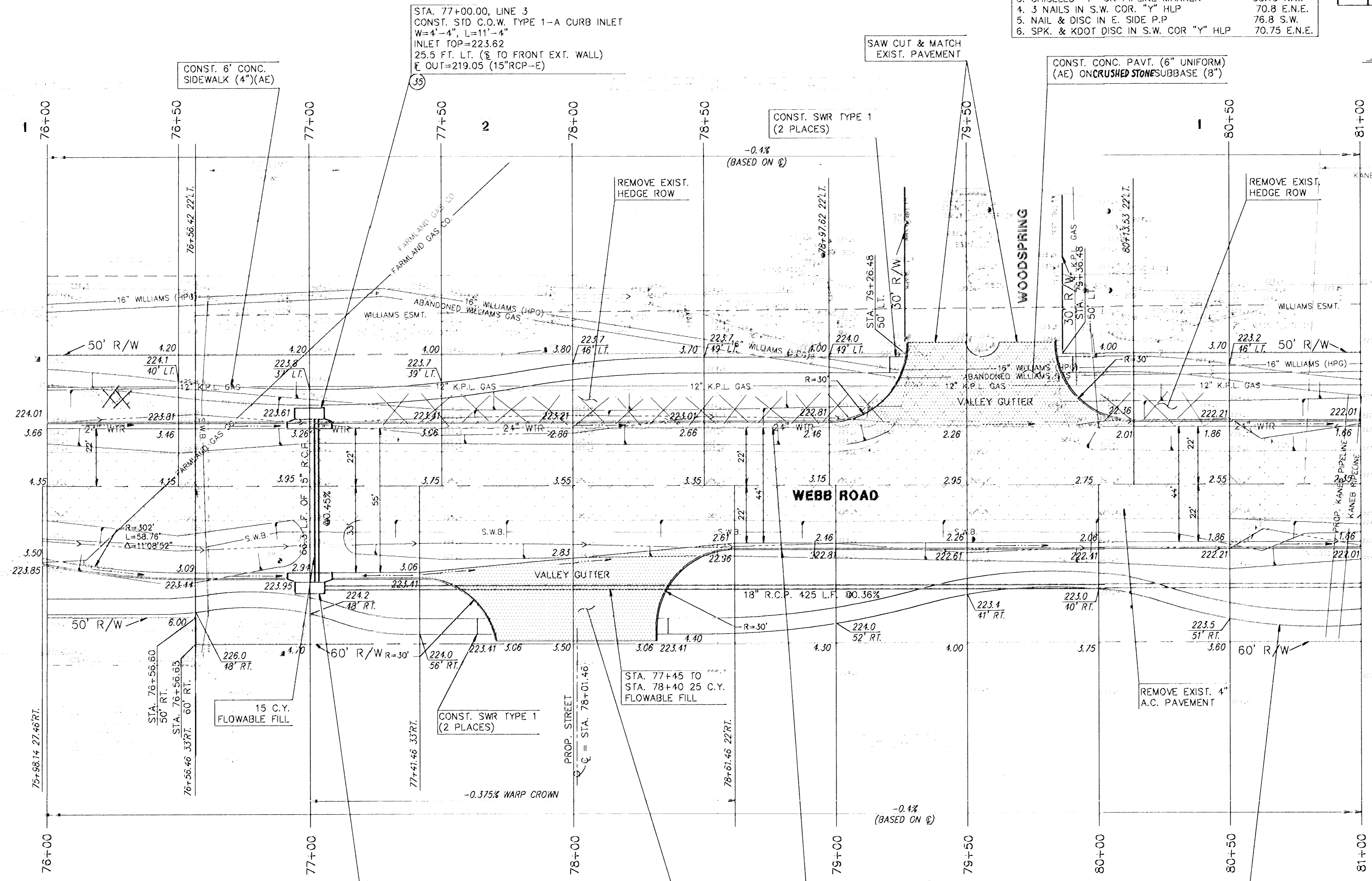
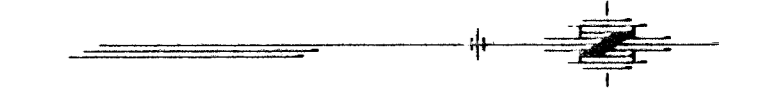


- WEST 1/4 CORNER 4-27S.-2E.  
 1. FOUND 1" BAR IN THIMBLE  
 2. Q PROP. IMPROVEMENTS STA. 76+56.25  
 3. CHISELED "+" ON PIPELINE MARKER  
 4. 3 NAILS IN S.W. COR. "Y" HLP  
 5. NAIL & DISC IN E. SIDE P.P  
 6. SPK. & KDOT DISC IN S.W. COR "Y" HLP
- 38.15 N.W.  
 70.8 E.N.E.  
 76.8 S.W.  
 70.75 E.N.E.

FHWA REGION NO.	STATE	PROJECT NO.	YEAR	SHEET NO.	TOTAL SHEETS
7	KS.	87-U-1362-01	1993	19	149



SCALE: 1"=20'



STA. 77+00.00, LINE 3  
 CONST. STD C.O.W. TYPE 1-A CURB INLET  
 W=4'-4", L=11'-4"  
 INLET TOP=223.62  
 25.5 FT. LT. (S TO FRONT EXT. WALL)  
 E OUT=219.05 (15"RCP-E)

SAW CUT & MATCH  
 EXIST. PAVEMENT

CONST. CONC. PAVT. (6" UNIFORM)  
 (AE) ON CRUSHED STONE SUBBASE (8")

CONST. SWR TYPE 1  
 (2 PLACES)

CONST. 6" CONC.  
 SIDEWALK (4")(AE)

REMOVE EXIST.  
 HEDGE ROW

REMOVE EXIST.  
 HEDGE ROW

WEBB ROAD

STA. 77+45 TO  
 STA. 78+40 25 C.Y.  
 FLOWABLE FILL

REMOVE EXIST. 4"  
 A.C. PAVEMENT

CONST. SWR TYPE 1  
 (2 PLACES)

15 C.Y.  
 FLOWABLE FILL

CONST. COMB. CURB &  
 GUTTER KDOT TYPE 1  
 STA. 76+00 TO  
 STA. 81+00

CONST. 6" CONC.  
 SIDEWALK (4")(AE)

STA. 77+00.00, LINE 3  
 CONST. STD C.O.W. TYPE 1-A CURB INLET  
 W=4'-4", L=11'-4"  
 INLET TOP=222.97  
 36.5 FT. RT. (S TO FRONT EXT. WALL)  
 E IN=218.78 (15"RCP-W)  
 E OUT=218.53 (18"RCP-N)

CONST. CONC. PAVT. (6" UNIFORM)  
 (AE) ON CRUSHED STONE SUBBASE (8")

LEGEND  
 PAVEMENT, DRIVEWAY AND/OR  
 SIDEWALK REMOVAL.

KANSAS DEPARTMENT OF TRANSPORTATION  
**WEBB ROAD**  
**76+00 TO 81+00**  
 PROJECT NO. 87-U-1362-01 SEDGWICK CO.  
**MID-KANSAS ENGINEERING CONSULTANTS, INC.**  
 WICHITA, KANSAS

FARMLAND INDUSTRIES, INC. 1(918)333-4111  
 KANEB 282-1408  
 KANSAS GAS & ELECTRIC (K.G.&E.) 264-1141  
 KPL GAS SERVICE CO. 263-7511  
 CITY OF WICHITA WATER DEPARTMENT 268-4908  
 SOUTHWESTERN BELL TELEPHONE CO. 1-571-2811  
 WILLIAMS PIPELINE 524-4390

B.M. #6 STANDARD CITY OF WICHITA DISC, WEBB RD. 31' RT. STA. 76+88.5 ELEV.=225.108  
 B.M. #7 "C" CUT ON SOUTH CURB, WOODSPRING 97' LT. STA. 79+27 ELEV.=222.878

WATER VALVE BOX ADJUSTMENTS				
STATION	OFFSET	EXISTING ELEV.	PROPOSED ELEV.	NOTES
79+92	22'L	222.91	222.00	W.V.
80+00	20'L	222.97	222.06	W.V.

DESIGNED BY: GJA CHECKED BY: DLH & KJS  
 DRAWN BY: DLH DATE: SHEET 19 OF 149