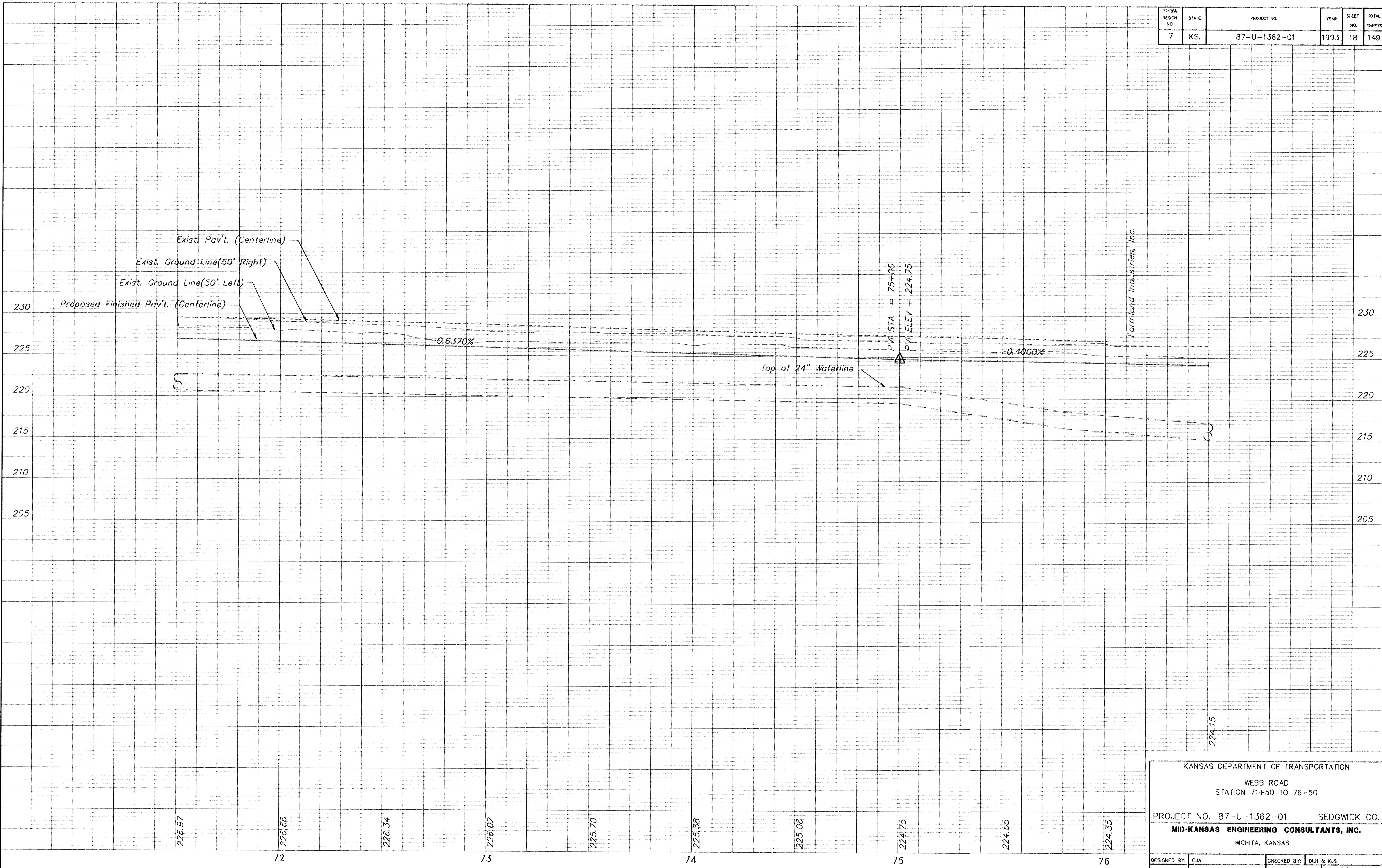


FHWA REGION NO.	STATE	PROJECT NO.	YEAR	SHEET NO.	TOTAL SHEETS
7	KS.	87-U-1362-01	1993	18	149



Farmland Industries, Inc.

224.15

KANSAS DEPARTMENT OF TRANSPORTATION	
WEBB ROAD STATION 71+50 TO 76+50	
PROJECT NO. 87-U-1362-01	SEDGWICK CO.
MID-KANSAS ENGINEERING CONSULTANTS, INC. MCHITA, KANSAS	
DESIGNED BY: CJA	CHECKED BY: DLH & KJS
DRAWN BY: ALN	DATE: 2/92
SHEET 18 OF 149	