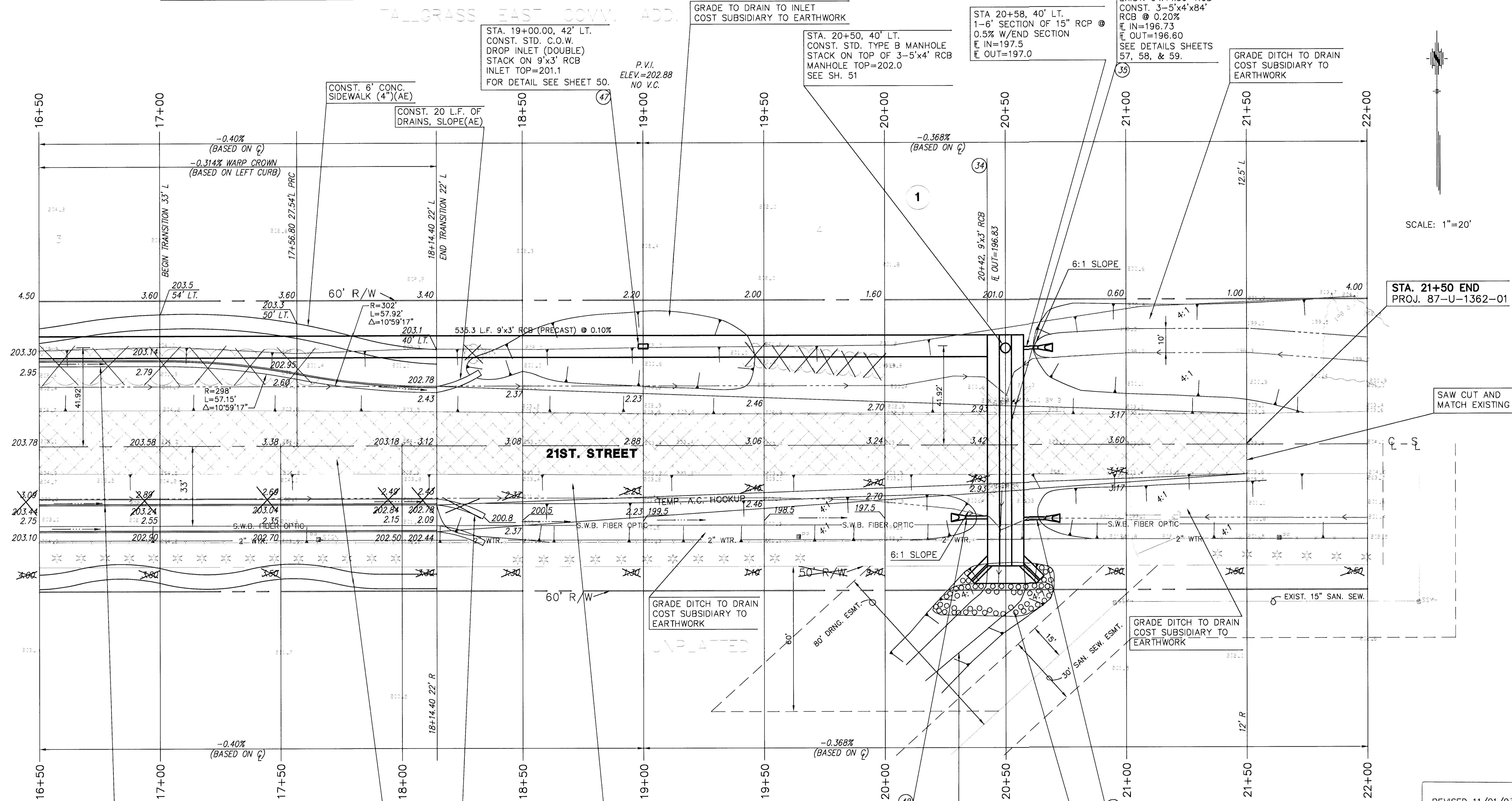


FHWA REGION NO.	STATE	PROJECT NO.	YEAR	SHEET NO.	TOTAL SHEETS
7	KS.	87-U-1362-01	1993	35	149

P.O.T.
 1. P.K. NAIL & DISC ON SOUTH LINE S.W. 1/4 4-27S.-2E.
 2. C PROP. IMPROVEMENTS STA. 29+50.54
 3. NAIL & DISC IN EAST SIDE P.P. 39.2 S.
 4. NAIL & DISC IN EAST SIDE GATE POST 76.15 S.E.
 5. P.K. NAIL IN NOSE OF MEDIAN CURB 66.85 N.E.
 21ST. ST. NORTH & CLUBHOUSE

SOUTH 1/4 CORNER 4-27S.-2E.
 1. FOUND 1/2" BAR
 2. C PROP. IMPROVEMENTS STA. 36+49.40
 3. 3 NAILS IN COR. POST 39.9 S.
 4. 3 NAILS IN FC POST 46.5 S.W.
 5. 3 NAILS IN FC POST 63.55 S.E.

Revised: See Bottom of this sheet.



STA. 21+50 END
 PROJ. 87-U-1362-01

SAW CUT AND
 MATCH EXISTING

REVISED 11/01/93

CONST. COMB. CURB &
 GUTTER KDOT TYPE 1
 STA. 16+50 TO
 STA. 18+14.40

REMOVE EXIST. 5"
 A.C. PAVEMENT

CONST. 20 L.F. OF
 DRAINS, SLOPES(AE)

STA. 18+14.40 TO STA. 21+50
 CONST. 6" AC (4" BIT. BASE)
 PAVEMENT HOOKUP

STA. 20+42, 30' RT.
 1-6" SECTION OF 15" RCP
 @ 0.5% W/END SECTION
 E IN=196.68
 E OUT=196.62

STA. 20+50, RT.
 INSTALL 20 C.Y. OF
 ROCK EMBANKMENT

STA. 20+58, 30.56' RT.
 1-6" SECTION OF 15" RCP
 @ 0.5% W/END SECTION
 E IN=196.68
 E OUT=196.62

GRADE DITCH TO DRAIN
 COST SUBSIDIARY TO
 EARTHWORK

GRADE DITCH TO DRAIN
 COST SUBSIDIARY TO
 EARTHWORK

GRADE DITCH TO DRAIN
 COST SUBSIDIARY TO
 EARTHWORK

KANSAS DEPARTMENT OF TRANSPORTATION

**21ST. STREET NORTH
 16+50 TO 22+00**

PROJECT NO. 87-U-1362-01 SEDGWICK CO.
MID-KANSAS ENGINEERING CONSULTANTS, INC.
 WICHITA, KANSAS

LEGEND
 PAVEMENT, DRIVEWAY AND/OR
 SIDEWALK REMOVAL.

DESIGNED BY:	GJA	CHECKED BY:	DLH & KJS
DRAWN BY:	WNJ	DATE:	SHEET 35 OF 149

KANSAS GAS & ELECTRIC (K.G.&E.) 264-1141 B.M. #1 "□" CUT ON NORTHEAST CORNER OF R.C.B. UNDER
 RURAL WATER DISTRICT 832-0213 21ST. STREET NORTH, 18' RT., STATION 20+53.75
 SOUTHWESTERN BELL TELEPHONE CO. 1-571-2611 ELEV.=202.580