

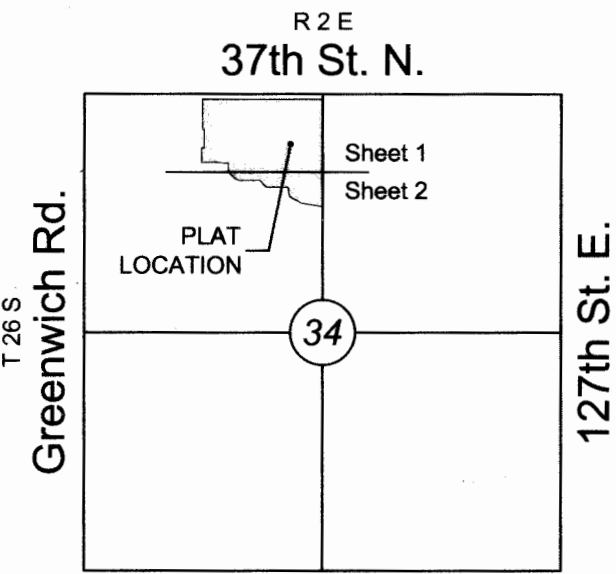
SUB2017-00023 Courtyards at Brookfield Addition

COURTYARDS AT BROOKFIELD ADDITION

AN ADDITION TO WICHITA, SEDGWICK COUNTY, KANSAS
a replat of a portion of Brookfield Addition, Wichita, Sedgwick County, Kansas

UPDATED

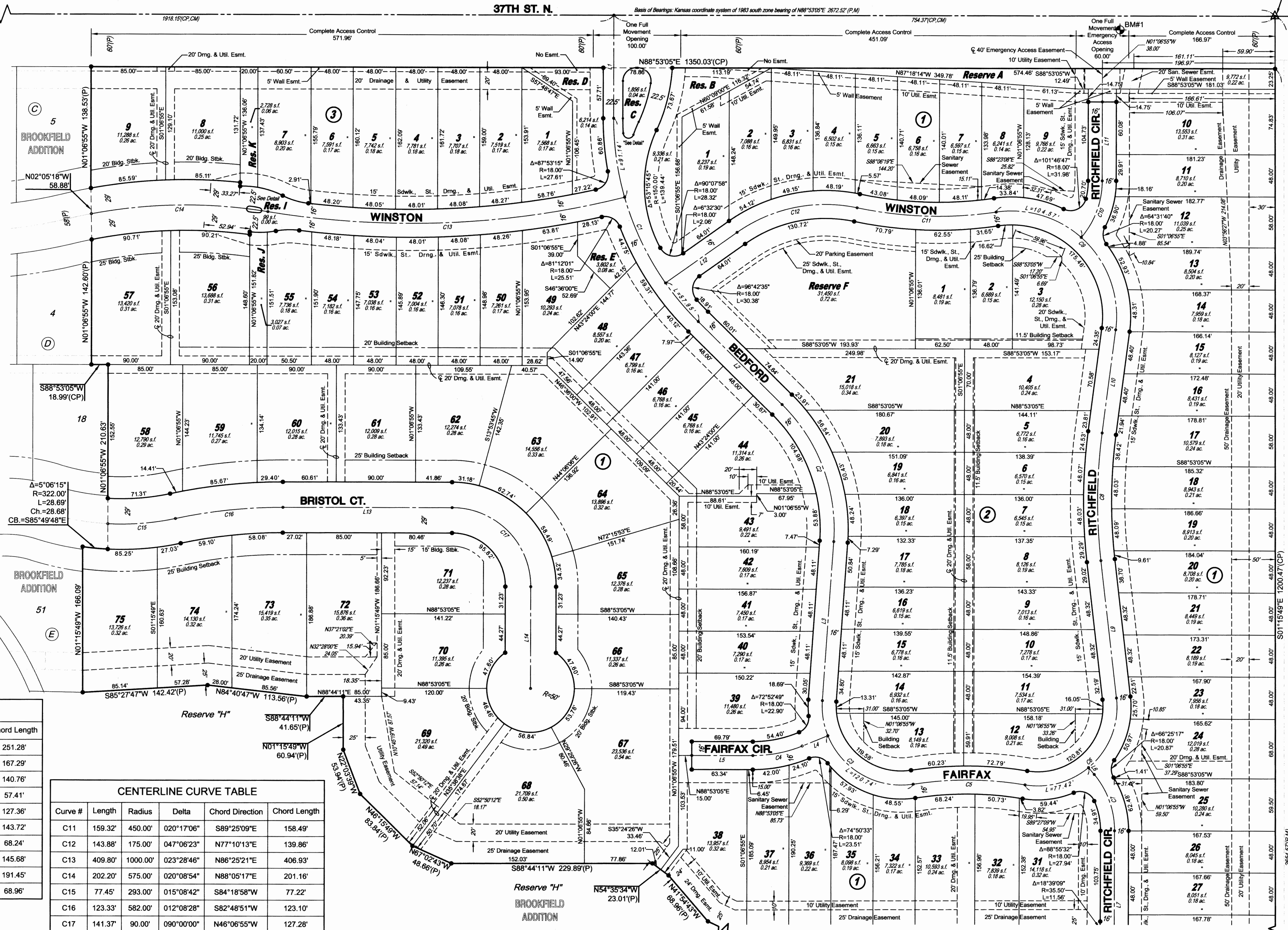
37TH ST. N.



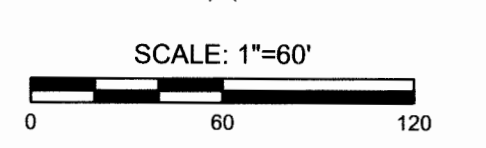
VICINITY MAP



Line #	Length	Direction
L1	117.71'	N01°06'55"W
L2	134.65'	N46°36'00"W
L3	181.87'	N02°50'48"E
L4	31.66'	S86°49'05"W
L5	69.79'	S88°53'05"W
L6	10.19'	N41°00'50"W
L7	169.53'	N01°06'55"W
L8	21.00'	N88°53'05"E
L9	157.85'	S07°41'14"E
L10	118.74'	S06°15'30"W
L11	89.98'	N01°06'55"W
L12	100.00'	N53°37'01"E
L13	192.48'	S88°53'05"W
L14	116.23'	N01°06'55"W



- LEGEND**
- Date of Survey: 5/30/17
- △ = Section Corner Monument Found
 - = Set 3/8" rebar w/ MKEC CLS 39 id. cap
 - ⊕ = Benchmark
 - (M) = Measured
 - (P) = Platted
 - (CM) = Calculated from Measurement
 - (CP) = Calculated from Plat
 - Dmg. = Drainage
 - Util. = Utility
 - Sdwk. = Sidewalk
 - St. = Street
 - Esmt. = Easement
 - ① = Block



SCALE: 1"=60'

Basis of Bearings: Kansas coordinate system of 1983 south zone bearing of N88°53'05"E on the north line of the Northwest Quarter, Section 34, Township 26 South, Range 2 East of the 6th Principal Meridian. This plat is surveyed and platted on NAD83 using Kansas state plane south zone coordinates, modified to the surface, having a combined adjustment scale factor of 1.000120014401728

FOUR OAKS ADDITION

LOTS (inclusive)	BLOCK	ELEVATION NAVD88
4 - 12	1	1377.3
26 - 38	1	1374.0
66 - 75	1	1374.0

- BENCHMARKS**
- BM#1 Chiseled square on centerline of R.C.B.C on south side of 37th St. N., 176.9' W. & 15.8' S. of the NE cor., NW 1/4, Sec. 34, T26S, R2E. Elev.=1373.80 NAVD88
 - BM#2 Chiseled square on E. side of school signal pole base, W. side of Greenwich Road, 302' S. & 21.9' W. of the SW cor., NW 1/4, Sec. 34, T26S, R2E. (offsite). Elev.=1387.64 NAVD88
 - BM#3 Top of 1" iron pipe at NW cor., NW 1/4, Sec. 34, T26S, R2E. (offsite). Elev.=1380.04 NAVD88

Curve #	Length	Radius	Delta	Chord Direction	Chord Length
C1	258.00'	325.00'	045°29'05"	N23°51'27"W	251.28'
C2	172.60'	200.00'	049°26'48"	N21°52'36"W	167.29'
C3	161.62'	90.00'	102°53'34"	N48°35'58"W	140.76'
C4	57.77'	150.00'	022°04'00"	S77°51'05"W	57.41'
C5	127.91'	400.00'	018°19'17"	S89°06'53"W	127.36'
C6	166.45'	90.00'	105°57'45"	S45°17'39"W	143.72'
C7	69.64'	100.00'	039°53'55"	N21°03'53"W	68.24'
C8	146.04'	600.00'	013°56'44"	S00°42'52"E	145.68'
C9	221.63'	120.00'	105°49'12"	S46°39'06"E	191.45'
C10	70.41'	100.00'	040°20'26"	N19°03'18"E	68.96'

Curve #	Length	Radius	Delta	Chord Direction	Chord Length
C11	159.32'	450.00'	020°17'06"	S89°25'09"E	158.49'
C12	143.88'	175.00'	047°06'23"	N77°10'13"E	139.86'
C13	409.80'	1000.00'	023°28'46"	N86°25'21"E	406.93'
C14	202.20'	575.00'	020°08'54"	N88°05'17"E	201.16'
C15	77.45'	293.00'	015°08'42"	S84°18'58"W	77.22'
C16	123.33'	582.00'	012°08'28"	S82°48'51"W	123.10'
C17	141.37'	90.00'	090°00'00"	N46°06'55"W	127.28'

CONTINUE ON SHEET 2

