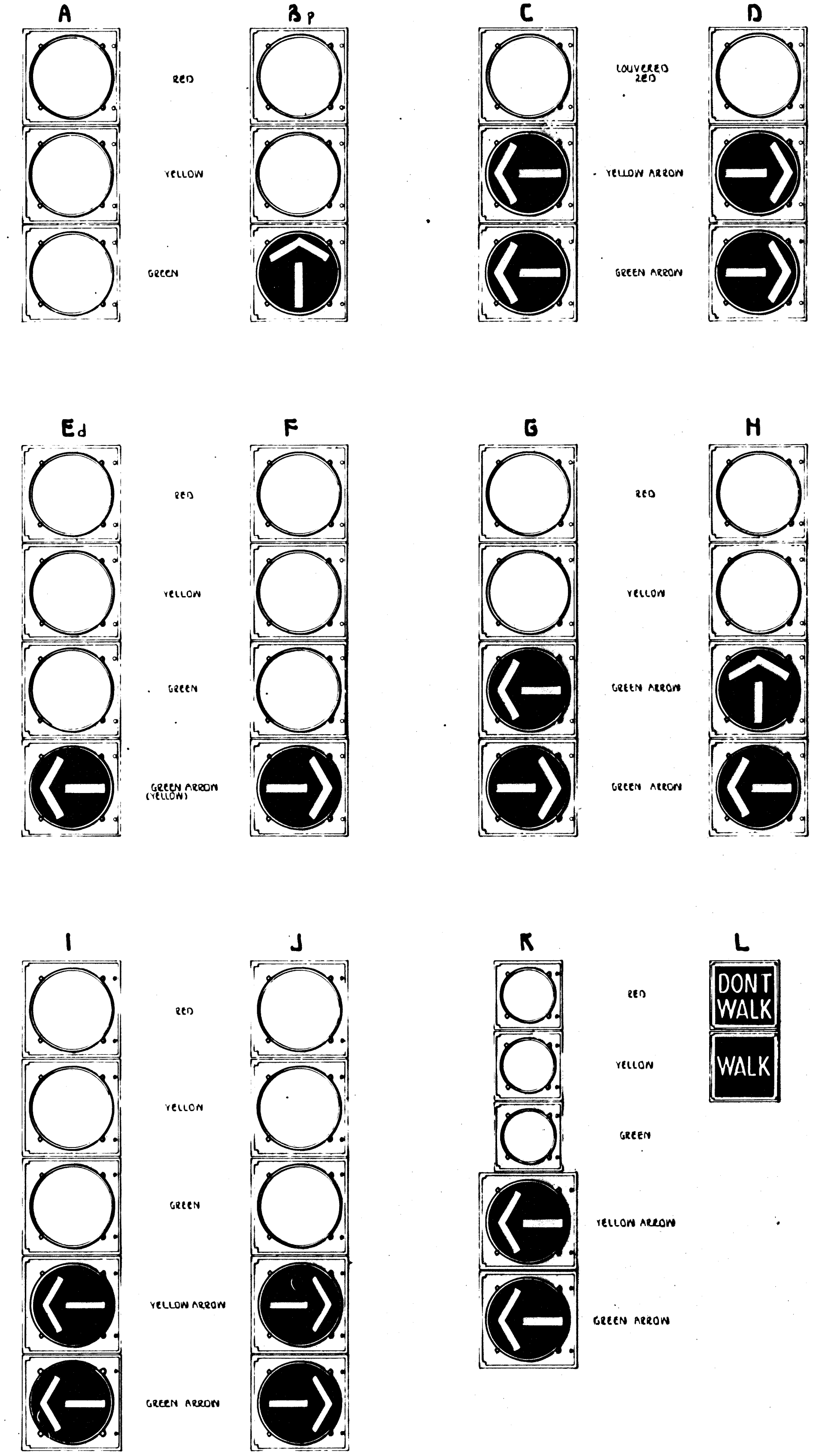


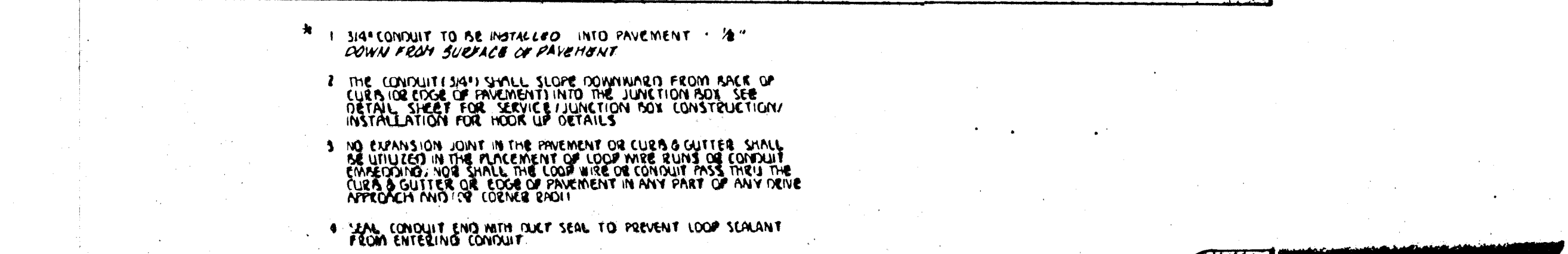
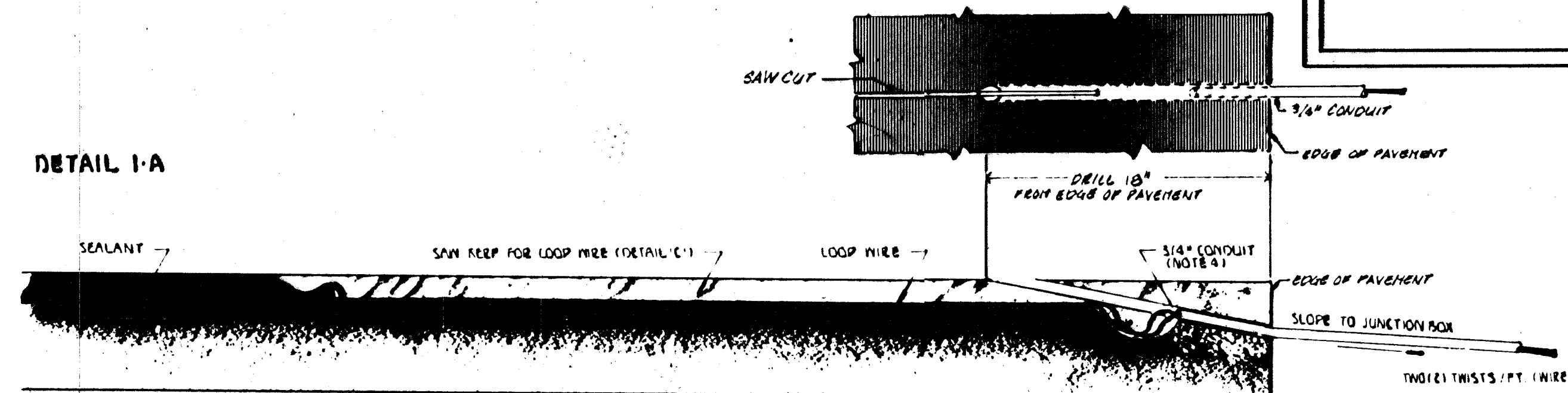
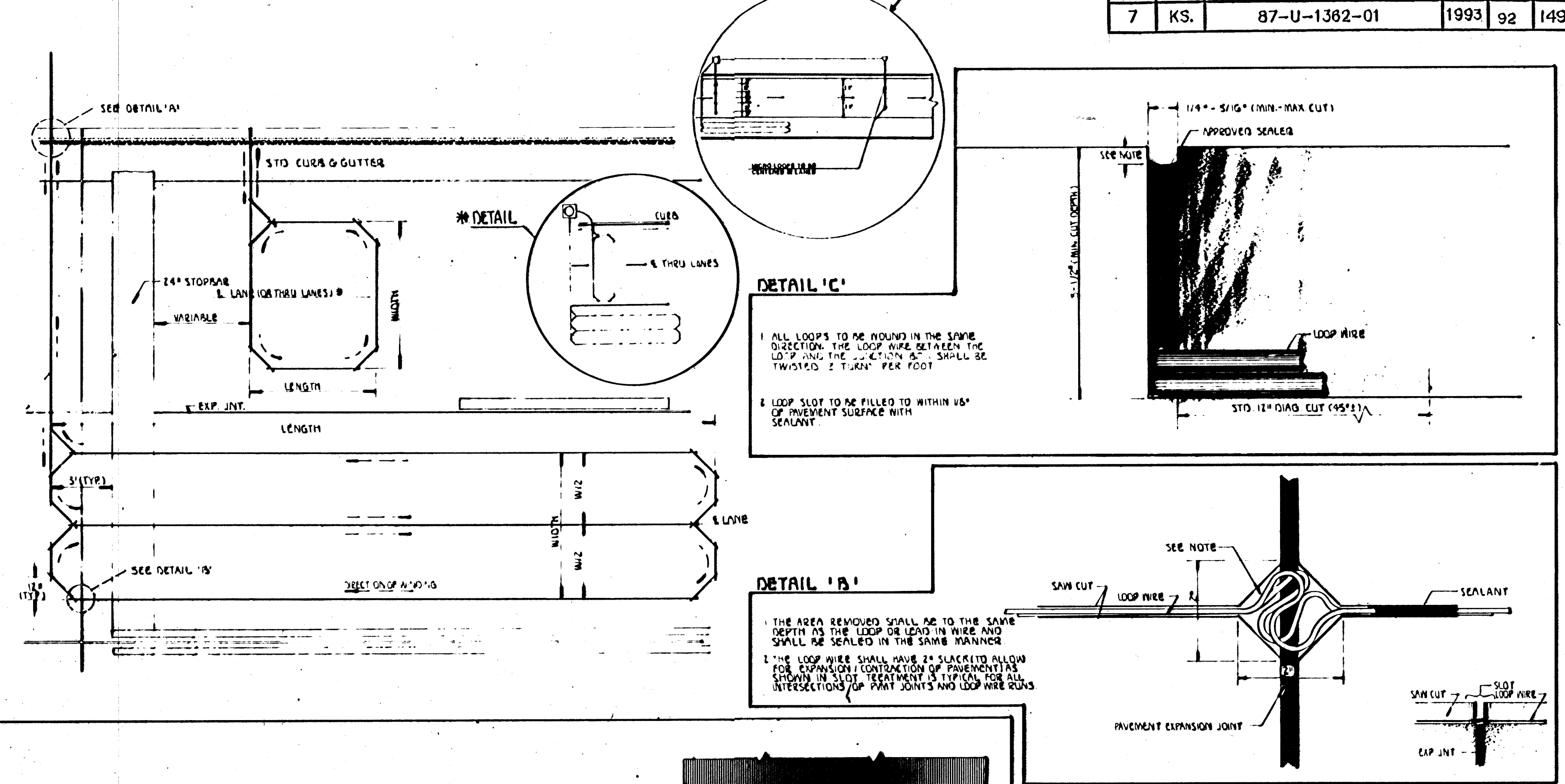
FHWA REGION NO.	STATE	PROJECT NO.	YEAR	SHEET NO.	TOTAL SHEETS
7	KS.	87-U-1362-01	1993	92	149



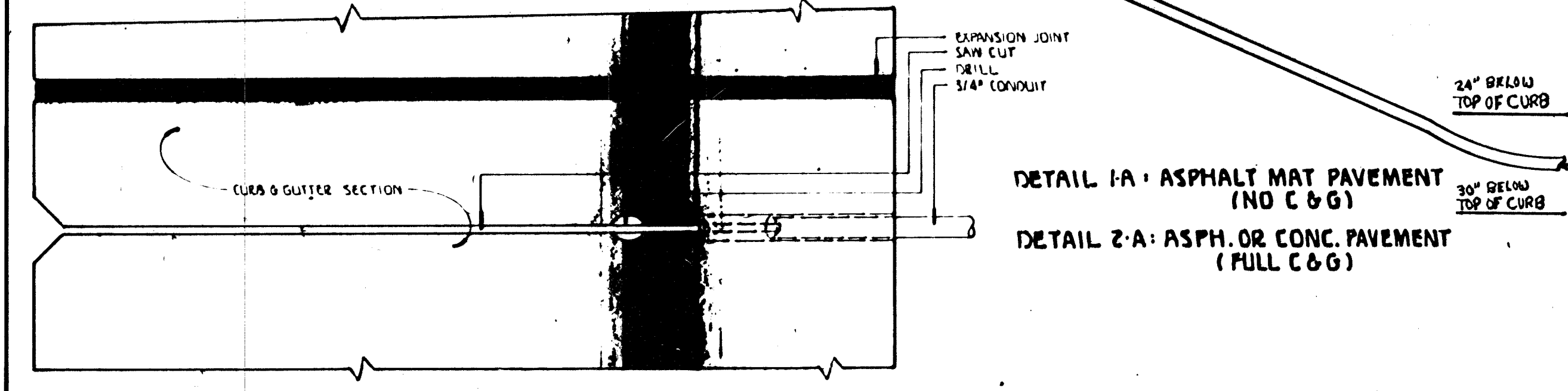
SIGNAL FACE ARRANGEMENT

SIGNAL 'B' IS PROGRAMMED TYPE (P).
SIGNAL 'E' IS DUAL-MODE GREEN/YELLOW ARROW SECTION TYPE (D)
SIGNAL 'K' IS TYPICAL 5-SECTION ARRANGEMENT USED BY C. OF W.
(6" 3-SECT. w/12" ARROWS.)

LOOP CONSTRUCTION/INSTALLATION DETAILS



- NOTES:**
1. LOOP FEEDER CONDUIT SHALL BE MINIMUM 18" FROM ANY OTHER LOOP FEEDER CONDUIT
 2. SAW CUT RUNNING PARALLEL WITH EXPANSION JOINT OR ANY OTHER SAW CUT SHALL BE MINIMUM 18" APART.
 3. a. Loops - 25' or less - 4 turns
b. Loops - over 25' - 3 turns
c. Quad Loops - 2-4-2 turns



REV DATE	COMMENTS	BY
10/21/93	REVISED DETAIL 1-A TO SHOW 1/2" DRILL HOLE	JES
10/21/93	REVISED DETAIL 2-A TO SHOW 1/2" DRILL HOLE	JES
10/21/93	REVISED DETAIL 2-A TO SHOW 1/2" DRILL HOLE	JES
10/21/93	REVISED DETAIL 2-A TO SHOW 1/2" DRILL HOLE	JES
10/21/93	REVISED DETAIL 2-A TO SHOW 1/2" DRILL HOLE	JES
10/21/93	REVISED DETAIL 2-A TO SHOW 1/2" DRILL HOLE	JES
10/21/93	REVISED DETAIL 2-A TO SHOW 1/2" DRILL HOLE	JES
10/21/93	REVISED DETAIL 2-A TO SHOW 1/2" DRILL HOLE	JES
10/21/93	REVISED DETAIL 2-A TO SHOW 1/2" DRILL HOLE	JES
10/21/93	REVISED DETAIL 2-A TO SHOW 1/2" DRILL HOLE	JES

PROJECT DESCRIPTION
SIGNAL FACE ARRANGEMENT / LOOP DETECTOR CONSTRUCTION AND INSTALLATION DETAILS

PROJECT NUMBER: 87-U-1362-01

APPROVED BY: [Signature] DATE: SEPT 03

CITY OF NICHITA
DEPARTMENT OF PUBLIC WORKS

TRAFFIC ENGINEERING
WIR & MEINLE, TRAFFIC ENGINEER

SCALE: DO NOT SCALE FOR INFORMATION ONLY.