

J:\PROJECTS\2017\150104077_COW_17TH STREET REHAB\150104077_CAD\SHOTS\06_CIVIL\GENERAL\15177NT.DWG
 PLOTTED: Friday, May 05, 2017 @ 01:23PM

STREET REHABILITATION FOR

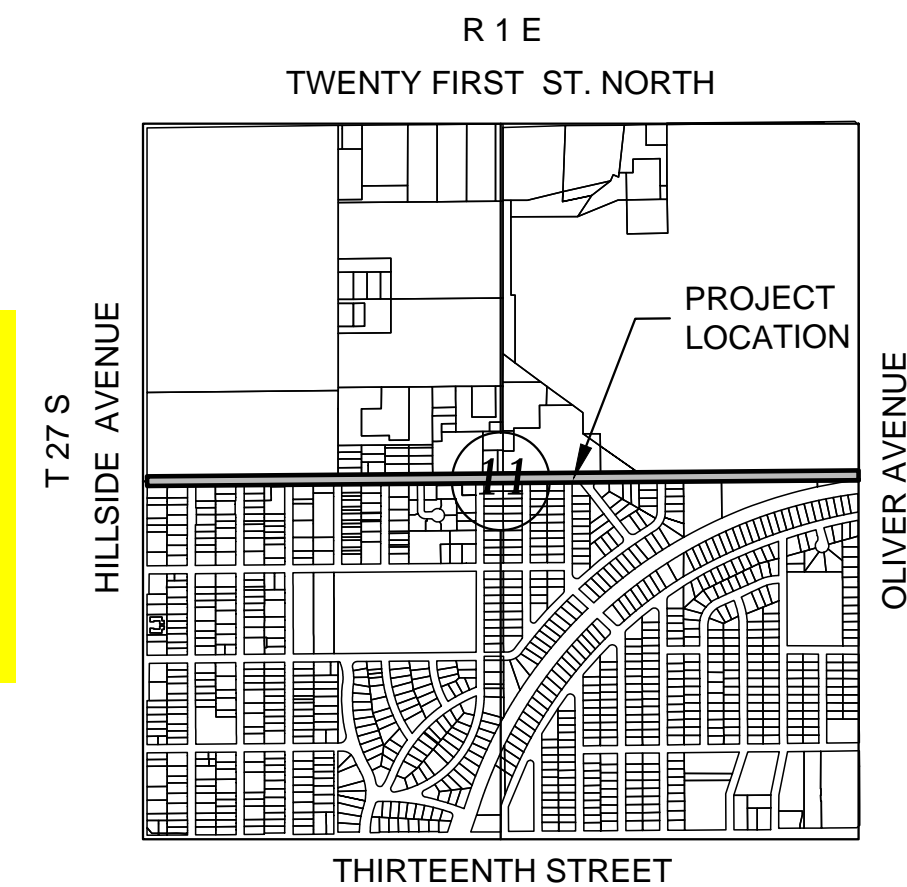
17TH STREET BETWEEN HILLSIDE & OLIVER

CITY OF WICHITA
 SEDGWICK COUNTY, KANSAS
 C.O.W. PROJECT NO. 472-85215
 PAVING O.C.A. NO. 707088
 WATER PROJECT NO. 448-90762
 WATER O.C.A. NO. 636350
 GARY L. JANZEN, P.E. - CITY ENGINEER

Dondlinger - Contractor
K. Kerns - City of Wichita, Field Project Engineer
T. Anthis - City of Wichita, Inspector
 Released Date: 4/30/2018
 Completion Date:
 pdf: 5/1/2018 apr

INDEX TO DRAWINGS

SHEET NO.	DESCRIPTION
1	TITLE SHEET
2	GENERAL NOTES & KEYMAP
3	TYPICAL SECTIONS
4-12	PAVING PLANS
13-14	PAVEMENT REPAIR SCHEDULE
15-18	PAVING DETAILS
19-21	STORM SEWER PLAN & PROFILES
22	STORM SEWER BUBBLE MAP
23-27	STORM SEWER DETAILS
28-30	WATER LINE PLANS & PROFILES
31	WATER BUBBLE MAP
32-34	WATER LINE DETAILS
35	SUMMARY OF QUANTITIES
36-42	EROSION CONTROL PLANS & DETAILS
43-46	PAVEMENT MARKING & SIGNING PLANS & DETAILS
47	CONSTRUCTION SEQUENCE SUMMARY
48-54	TRAFFIC CONTROL PLANS

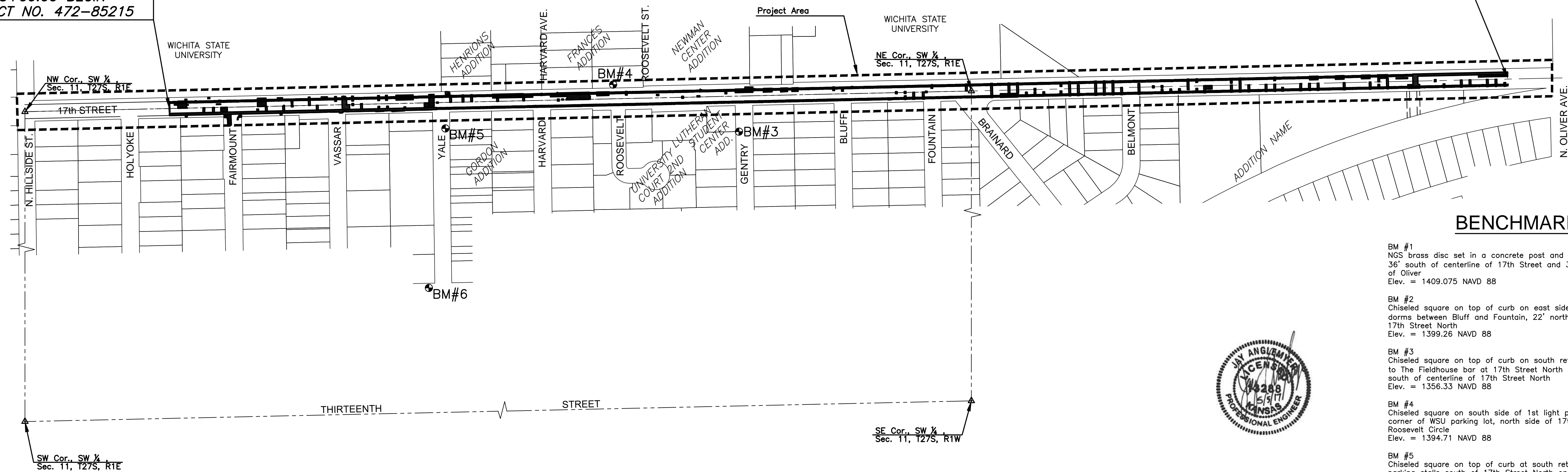


VICINITY MAP

No Scale

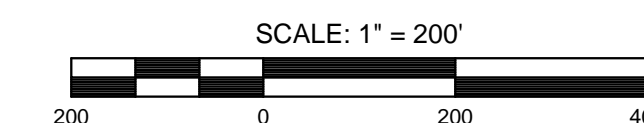
STA. 15+00.00 BEGIN
PROJECT NO. 472-85215

STA. 61+36.50 END
PROJECT NO. 472-85215



BENCHMARKS

- BM #1
NCS brass disc set in a concrete post and stamped P 39 1934,
36' south of centerline of 17th Street and 32' West of centerline
of Oliver
Elev. = 1409.075 NAVD 88
- BM #2
Chiseled square on top of curb on east side of entrance to old
dorms between Bluff and Fountain, 22' north of north curb of
17th Street North
Elev. = 1399.26 NAVD 88
- BM #3
Chiseled square on top of curb on south return to east entrance
to The Fieldhouse bar at 17th Street North and Gentry, 105'
south of centerline of 17th Street North
Elev. = 1356.33 NAVD 88
- BM #4
Chiseled square on south side of 1st light pole west of southeast
corner of WSU parking lot, north side of 17th Street North at
Roosevelt Circle
Elev. = 1394.71 NAVD 88
- BM #5
Chiseled square on top of curb at south return of 1st set of
parking stalls south of 17th Street North on east side of Yale
Elev. = 1382.175 NAVD 88
- BM #6
Chiseled square on top of north curb of 16th Street North, 10'
+/- west of curb inlet on northwest corner of Yale and 16th
Street North
Elev. = 1376.235 NAVD 88
- BM #7
Chiseled square on southeast corner of sidewalk, approximately 60'
west of west edge of Paradise Baptist Church parking lot
Elev. = 1408.22 NAVD 88
- BM #8
Chiseled square on top of curb, 19' southeast of south end of
curb return on southeast corner of 17th Street and Brainard, in
front of fire hydrant
Elev. = 1399.81 NAVD 88
- BM #9
Chiseled square on top of curb at south end of curb return on
southeast corner of 17th Street and Fairmount
Elev. = 1394.29 NAVD 88



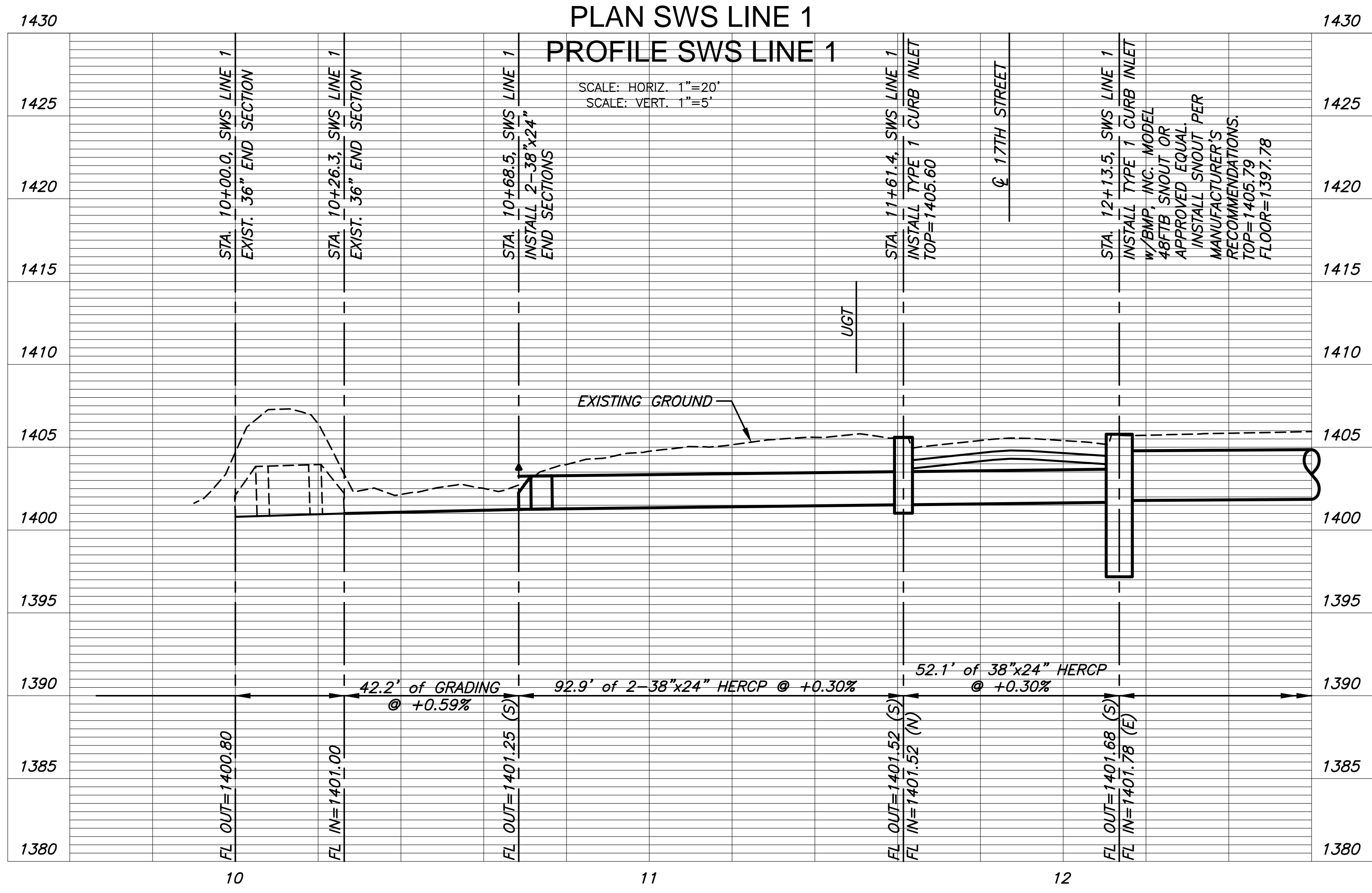
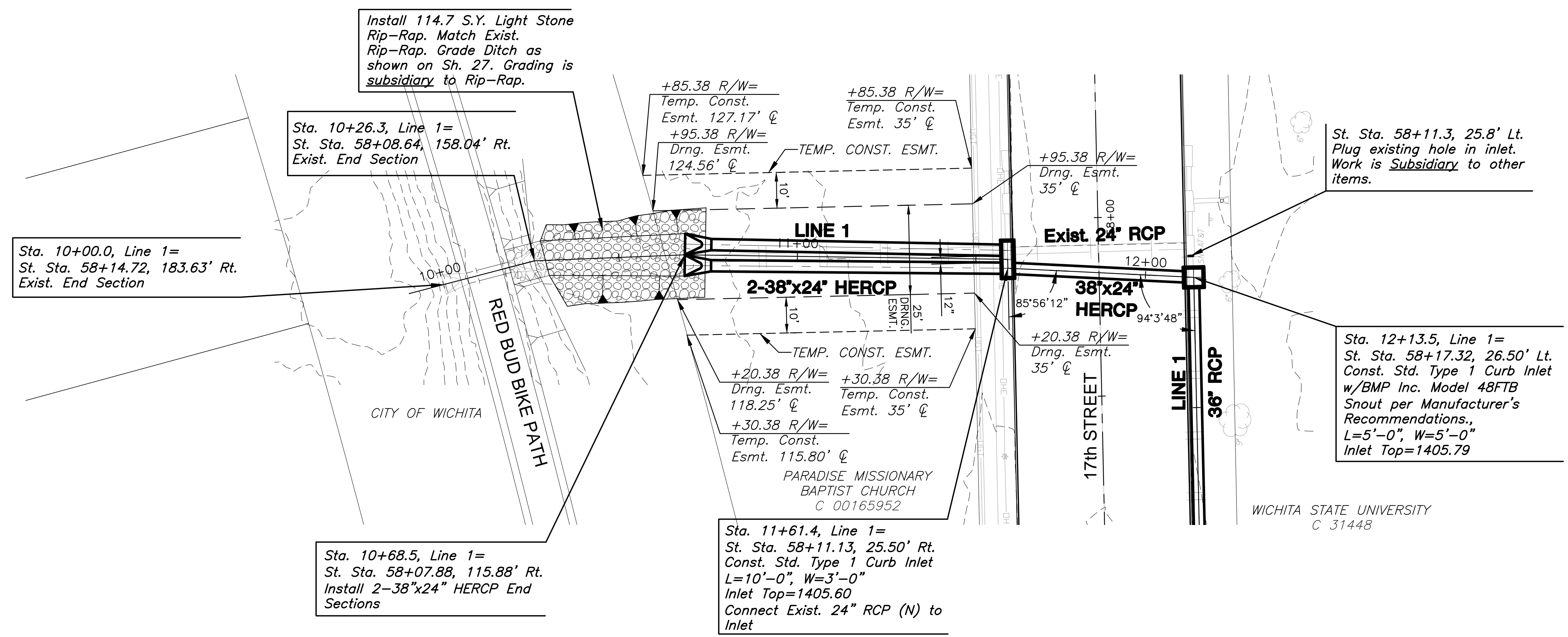
STREET REHABILITATION FOR
17TH STREET BETWEEN HILLSIDE & OLIVER
 WICHITA, KS

©2017
 MKEC Engineering
 All Rights Reserved
 www.mkec.com
 These drawings and their contents,
 including, but not limited to, all concepts,
 designs, & ideas are the exclusive
 property of MKEC Engineering (MKEC),
 and may not be used or reproduced in any
 way without the express consent of MKEC.

TITLE SHEET

PROJECT NO.	472-85215	
DATE	5/3/2017	
SCALE	AS SHOWN	
DESIGNED	DRAWN	CHECKED
JRA	BKS	JRA
NO.	REVISION	DATE
SHEET NO.		
1 OF 54		

J:\PROJECTS\2017\150177_COW_17TH STREET REHAB\150177_CADSHTS\06_CIVIL\SWS\15177D901.DWG
 PLOTTED: Wednesday, May 03, 2017 @ 10:38AM



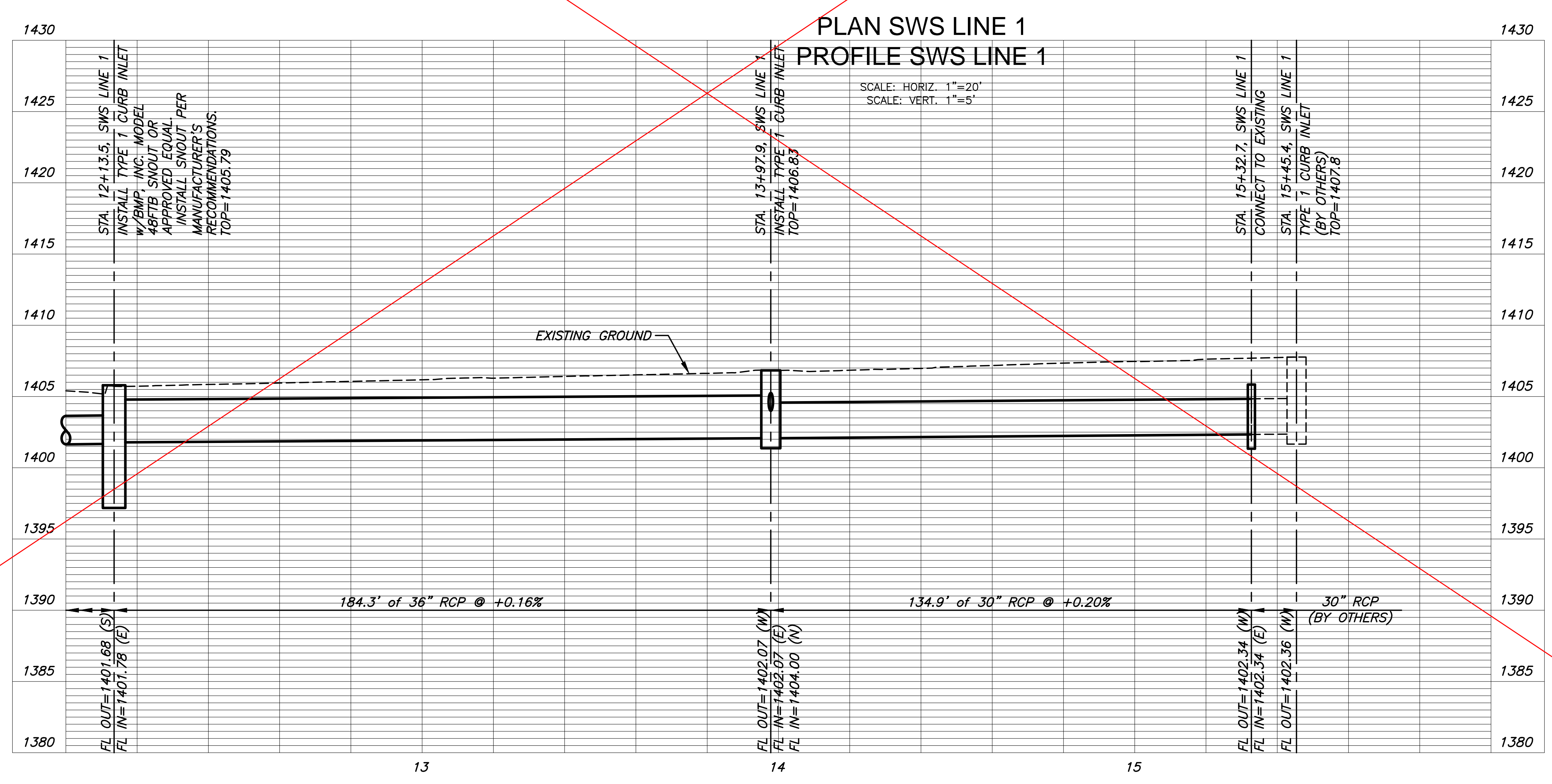
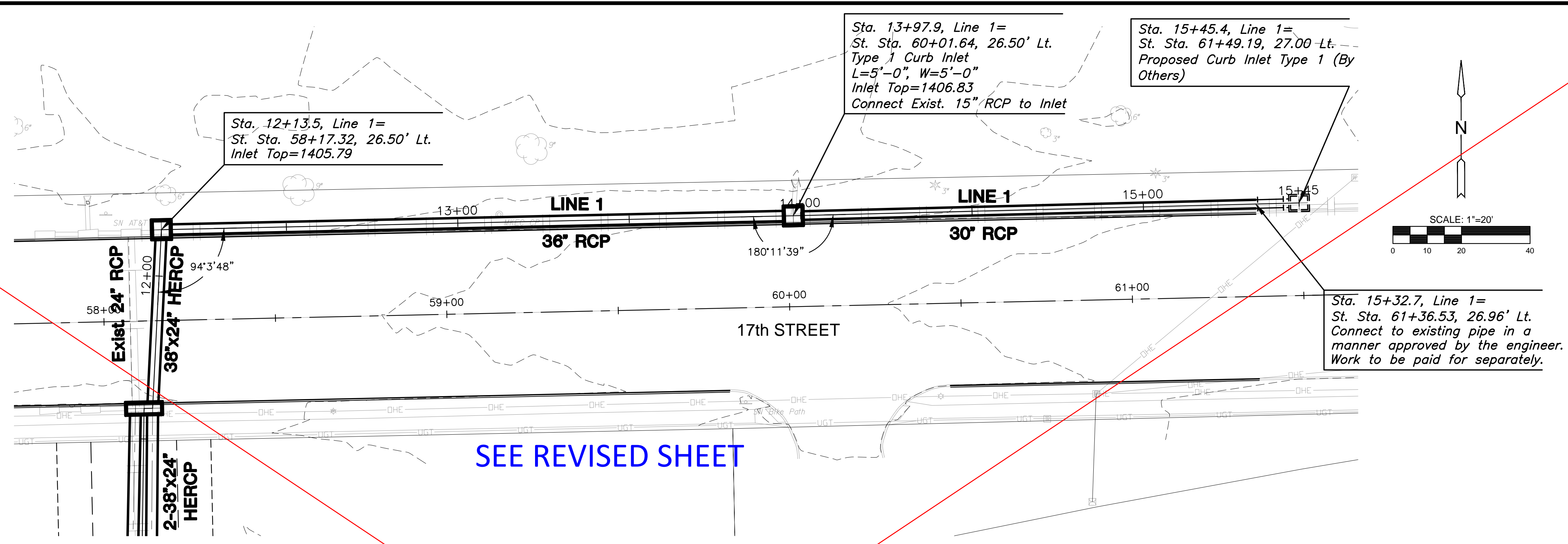
STORM WATER SEWER PLAN FOR
17TH STREET BETWEEN HILLSIDE & OLIVER
 WICHITA, KS

©2017 MKEC Engineering All Rights Reserved
 www.mkec.com
 These drawings and their contents, including, but not limited to, all concepts, designs, & ideas are the exclusive property of MKEC Engineering (MKEC), and may not be used or reproduced in any way without the express consent of MKEC.

STORM SEWER PLAN & PROFILE

PROJECT NO.	472-85215	
DATE	5/3/2017	
SCALE	1"=20'	
DESIGNED	DRAWN	CHECKED
JRA	WNJ	BLB
NO.	REVISION	DATE

J:\PROJECTS\2017\150104077_COW_17TH STREET REHAB_150177_CADD\SHS\06_CIVIL\SWS\15177D302.DWG
 PLOTTED: Wednesday, May 03, 2017 @ 10:35AM



STORM WATER SEWER PLAN FOR
17TH STREET BETWEEN HILLSIDE & OLIVER
 WICHITA, KS

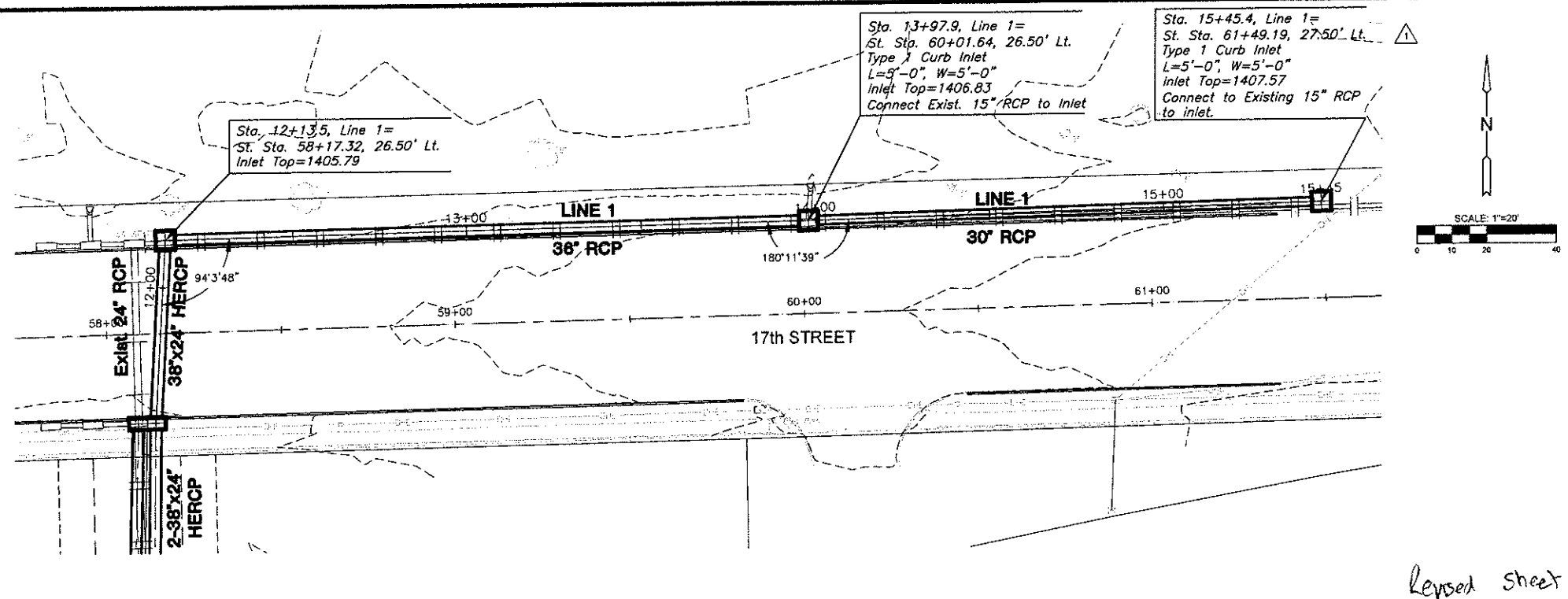
©2017
 MKEC Engineering
 All Rights Reserved
 www.mkec.com
 These drawings and their contents, including, but not limited to, all concepts, designs, & ideas are the exclusive property of MKEC Engineering (MKEC), and may not be used or reproduced in any way without the express consent of MKEC.

STORM SEWER
PLAN &
PROFILE

PROJECT NO.	472-85215	
DATE	5/3/2017	
SCALE	1"=20'	
DESIGNED	DRAWN	CHECKED
JRA	WNJ	BLB

NO.	REVISION	DATE

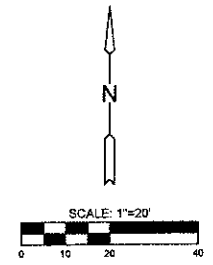
PLATTEN: Friday, July 07, 2017 9:30:34 AM



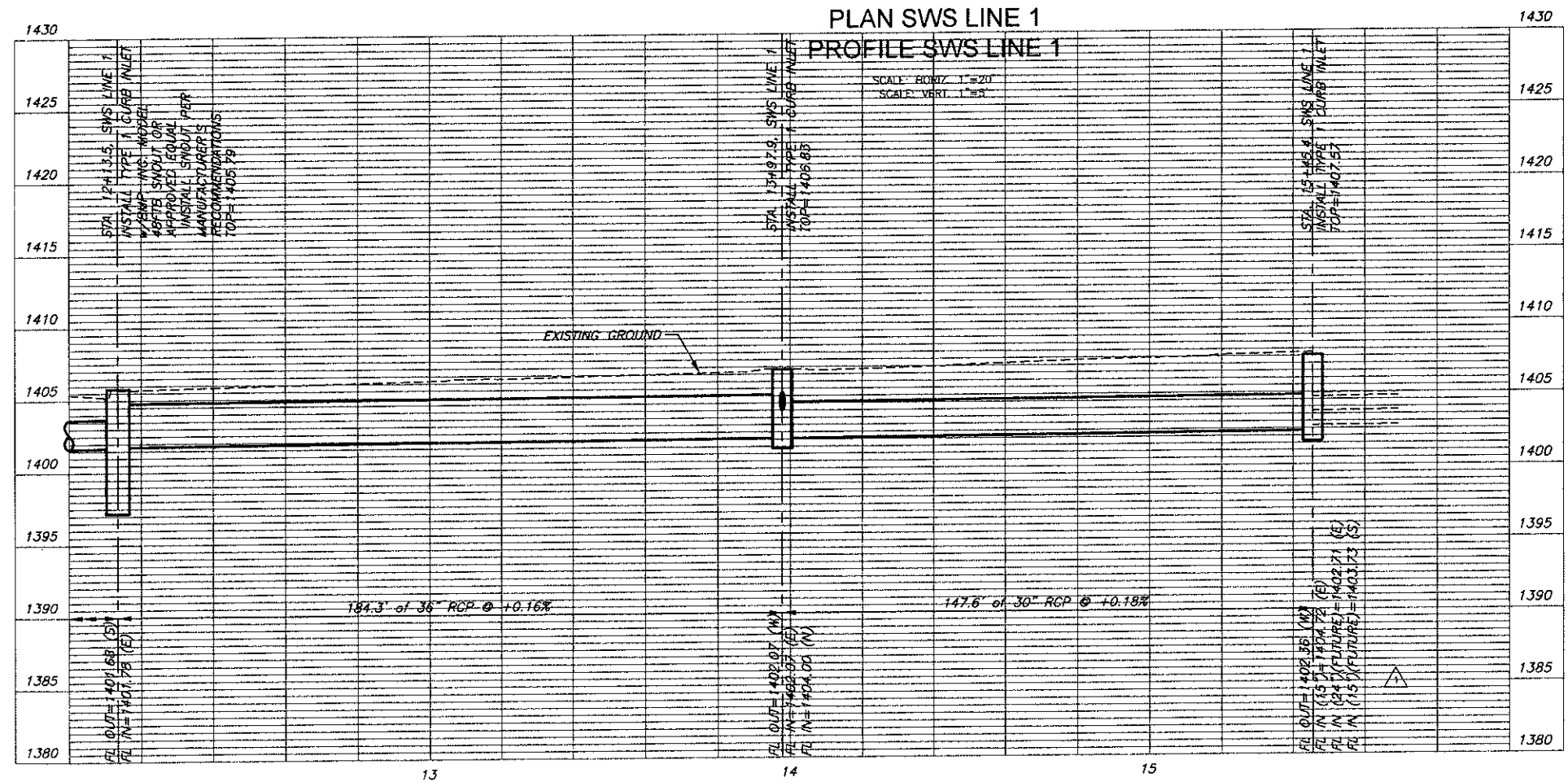
Sta. 13+97.9, Line 1=
St. Sta. 60+01.64, 26.50' Lt.
Type 1 Curb Inlet
L=5'-0", W=5'-0"
Inlet Top=1406.83
Connect Exist. 15" RCP to Inlet

Sta. 15+45.4, Line 1=
St. Sta. 61+49.19, 27.50' Lt.
Type 1 Curb Inlet
L=5'-0", W=5'-0"
Inlet Top=1407.57
Connect to Existing 15" RCP
to Inlet.

Sta. 12+13.5, Line 1=
St. Sta. 58+17.32, 26.50' Lt.
Inlet Top=1405.79



Revised sheet



STORM WATER SEWER PLAN FOR
17TH STREET BETWEEN HILLSIDE & OLIVER
WICHITA, KS

©2017
MKEC Engineering
All Rights Reserved
www.mkec.com
These drawings and their contents, including but not limited to all concepts, designs & ideas are the exclusive property of MKEC Engineering (MKEC), and may not be used or reproduced in any way without the express consent of MKEC.

**STORM SEWER
PLAN &
PROFILE**

PROJECT NO.	472-85215
DATE	5/3/2017
SCALE	1"=20'
DESIGNED	JRA
DRAWN	WNJ
CHECKED	BLB

NO.	REVISION	DATE
1	REVISED SWS	7/7/17

SHEET NO.
20 OF 54

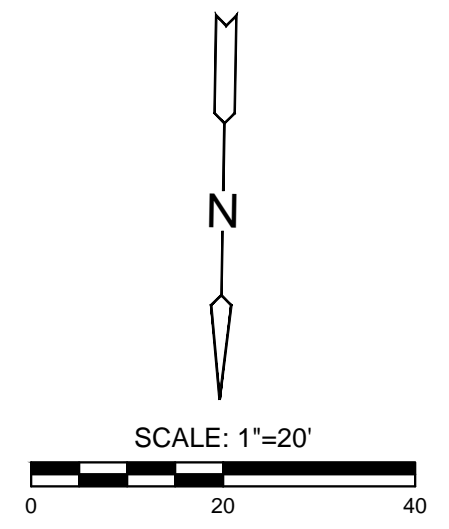
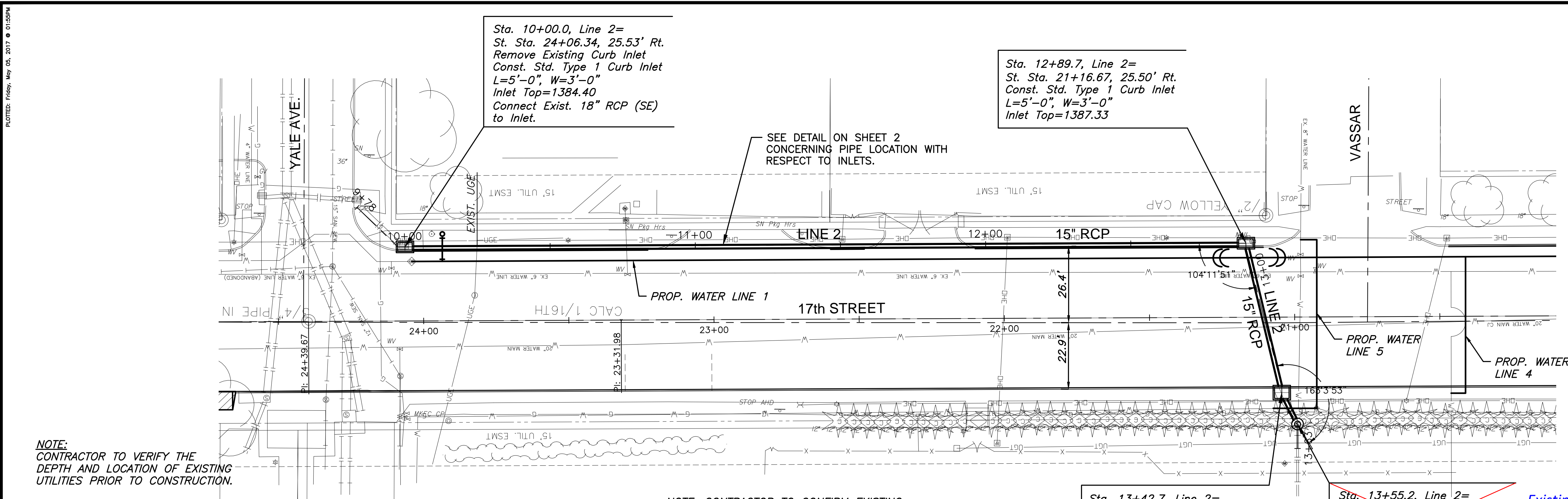
J:\PROJECTS\2016\160104017L_CON_L17H STREETS RESUB_160104017 CON L17H SWS\1577020.DWG

©2017 MKEC Engineering
All Rights Reserved
www.mkec.com
These drawings and their contents, including, but not limited to, all concepts, designs, & ideas are the exclusive property of MKEC Engineering (MKEC), and may not be used or reproduced in any way without the express consent of MKEC.

STORM SEWER PLAN & PROFILE

PROJECT NO.	472-85215	
DATE	5/3/2017	
SCALE	1"=20'	
DESIGNED	DRAWN	CHECKED
JRA	WNJ	JRA

NO.	REVISION	DATE



NOTE: CONTRACTOR TO VERIFY THE DEPTH AND LOCATION OF EXISTING UTILITIES PRIOR TO CONSTRUCTION.

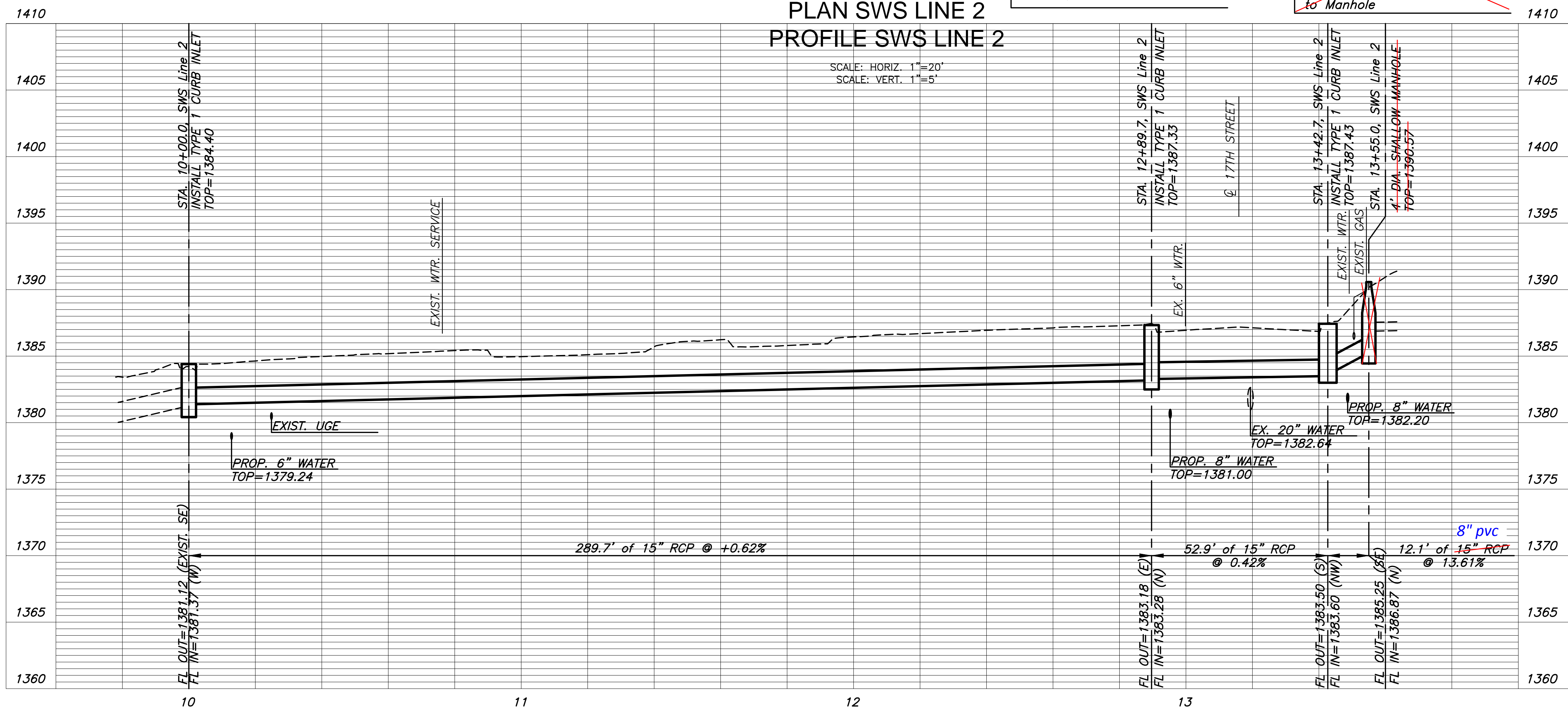
NOTE: CONTRACTOR TO CONFIRM EXISTING CONDITIONS PRIOR TO INSTALLATION OR MANUFACTURE OF STORM SEWER APPURTENANCES.

Sta. 13+42.7, Line 2=
St. Sta. 21+04.54, 26.00' Lt.
Const. Std. Type 1 Curb Inlet
L=5'-0", W=4'-0"
Inlet Top=1387.43

Sta. 13+55.2, Line 2=
St. Sta. 20+99.19, 36.85' Lt.
Const. 4' Dia. Shallow Manhole
MH Top=1390.57
Connect Exist. 8" Clay Pipe (N) to Manhole

Existing 4' mh left in place.
8" vcp replaced with 12 lf - 8" pvc.

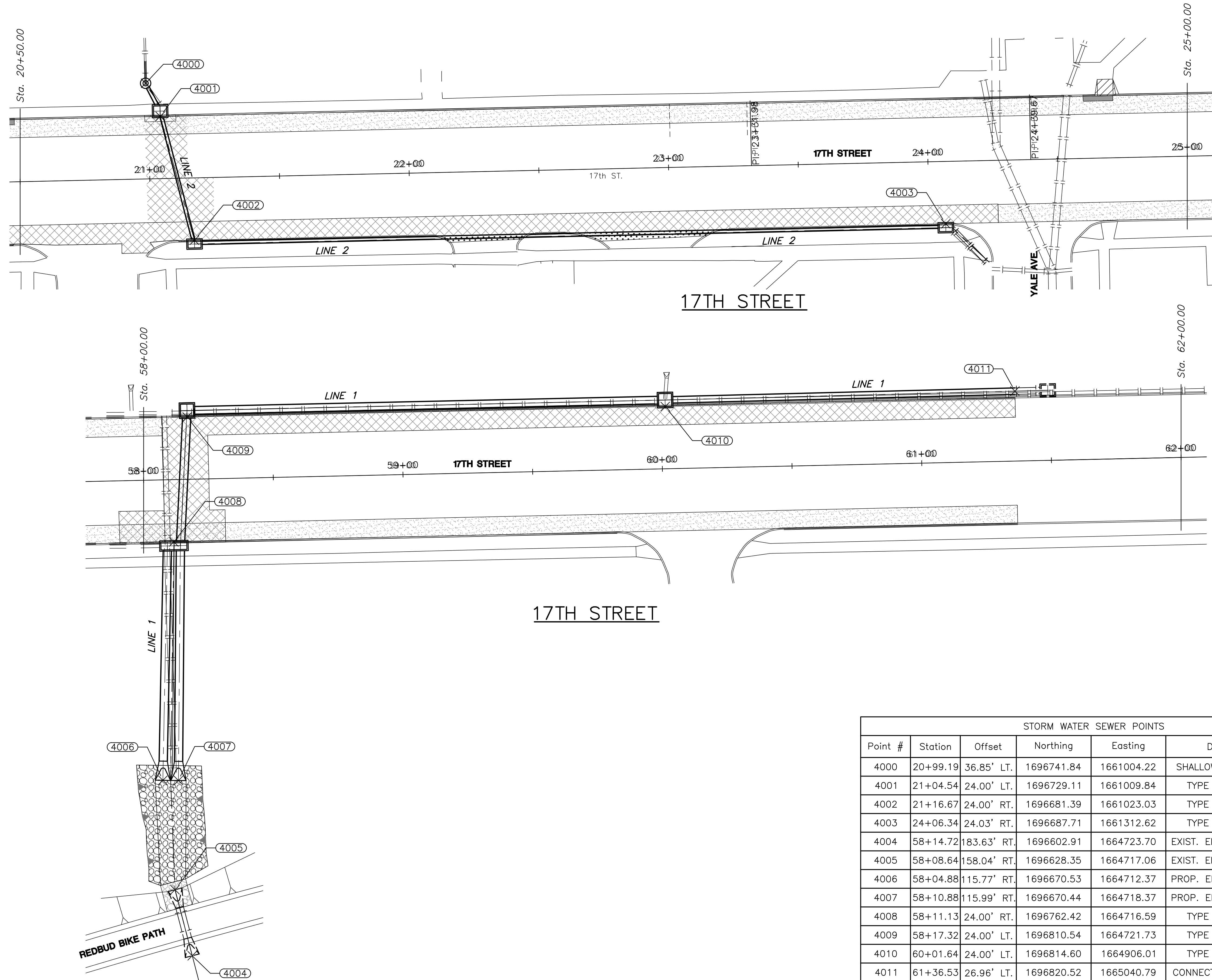
**PLAN SWS LINE 2
PROFILE SWS LINE 2**



PLOTTED: Friday, May 05, 2017 @ 01:55PM
 J:\PROJECTS\2017\150104077_COW_17TH STREET REHAB_150177.CAD\SHOTS\06 CIVIL\SWS\15177DR04.DWG

PLOTTED: Friday, May 05, 2017 @ 02:13PM

J:\PROJECTS\2016\150104077_COW_17TH STREET REHAB_150177_CADD\SHOTS\06_CIVIL\CONTROL-BUBBLE\15177DB01.DWG



STORM WATER SEWER POINTS						
Point #	Station	Offset	Northing	Easting	Desc.	SWS Line
4000	20+99.19	36.85' LT.	1696741.84	1661004.22	SHALLOW SWS MH	2
4001	21+04.54	24.00' LT.	1696729.11	1661009.84	TYPE 1 INLET	2
4002	21+16.67	24.00' RT.	1696681.39	1661023.03	TYPE 1 INLET	2
4003	24+06.34	24.03' RT.	1696687.71	1661312.62	TYPE 1 INLET	2
4004	58+14.72	183.63' RT.	1696602.91	1664723.70	EXIST. END SECTION	1
4005	58+08.64	158.04' RT.	1696628.35	1664717.06	EXIST. END SECTION	1
4006	58+04.88	115.77' RT.	1696670.53	1664712.37	PROP. END SECTION	1
4007	58+10.88	115.99' RT.	1696670.44	1664718.37	PROP. END SECTION	1
4008	58+11.13	24.00' RT.	1696762.42	1664716.59	TYPE 1 INLET	1
4009	58+17.32	24.00' LT.	1696810.54	1664721.73	TYPE 1 INLET	1
4010	60+01.64	24.00' LT.	1696814.60	1664906.01	TYPE 1 INLET	1
4011	61+36.53	26.96' LT.	1696820.52	1665040.79	CONNECT TO EXIST.	1



STORM WATER SEWER PLAN FOR
17TH STREET BETWEEN HILLSIDE & OLIVER
WICHITA, KS

©2017 MKEC Engineering All Rights Reserved
www.mkec.com
These drawings and their contents, including, but not limited to, all concepts, designs, & ideas are the exclusive property of MKEC Engineering (MKEC), and may not be used or reproduced in any way without the express consent of MKEC.

SWS BUBBLE MAP

PROJECT NO.	472-85215	
DATE	5/3/2017	
SCALE	1"=20'	
DESIGNED	DRAWN	CHECKED
JRA	RAM	JRA

NO.	REVISION	DATE

SHEET NO.