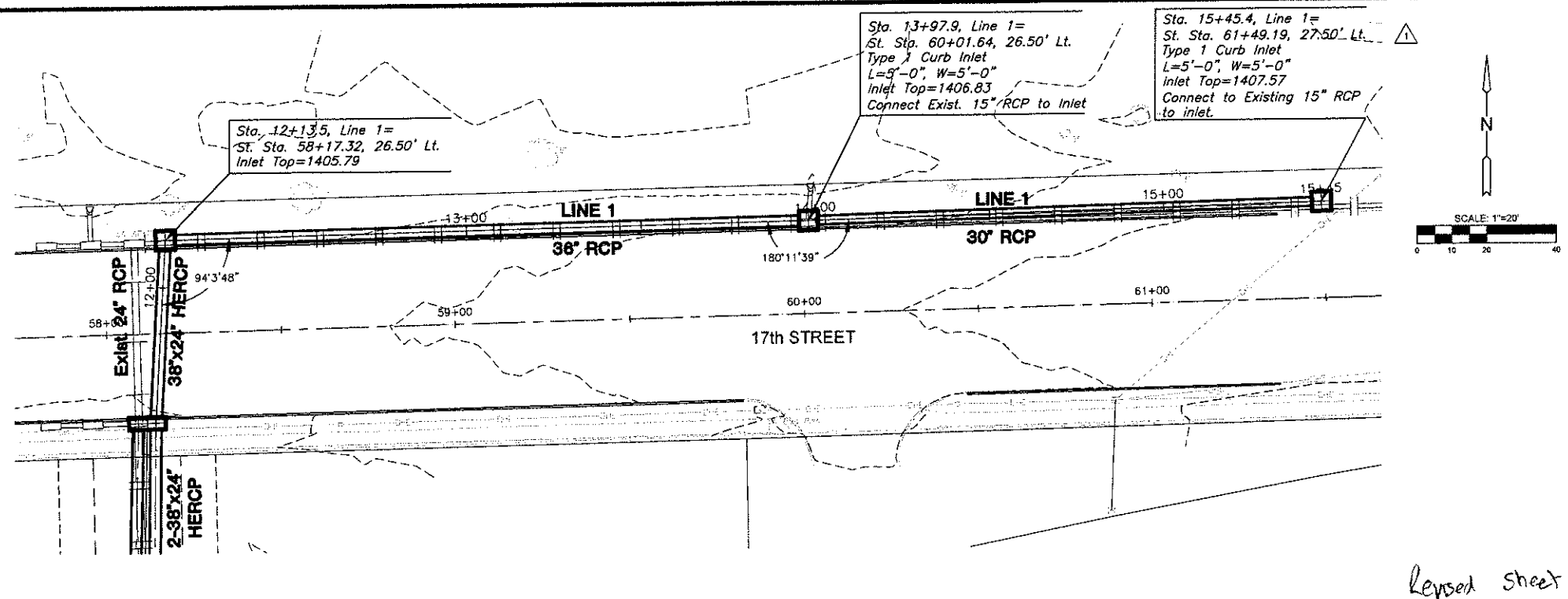
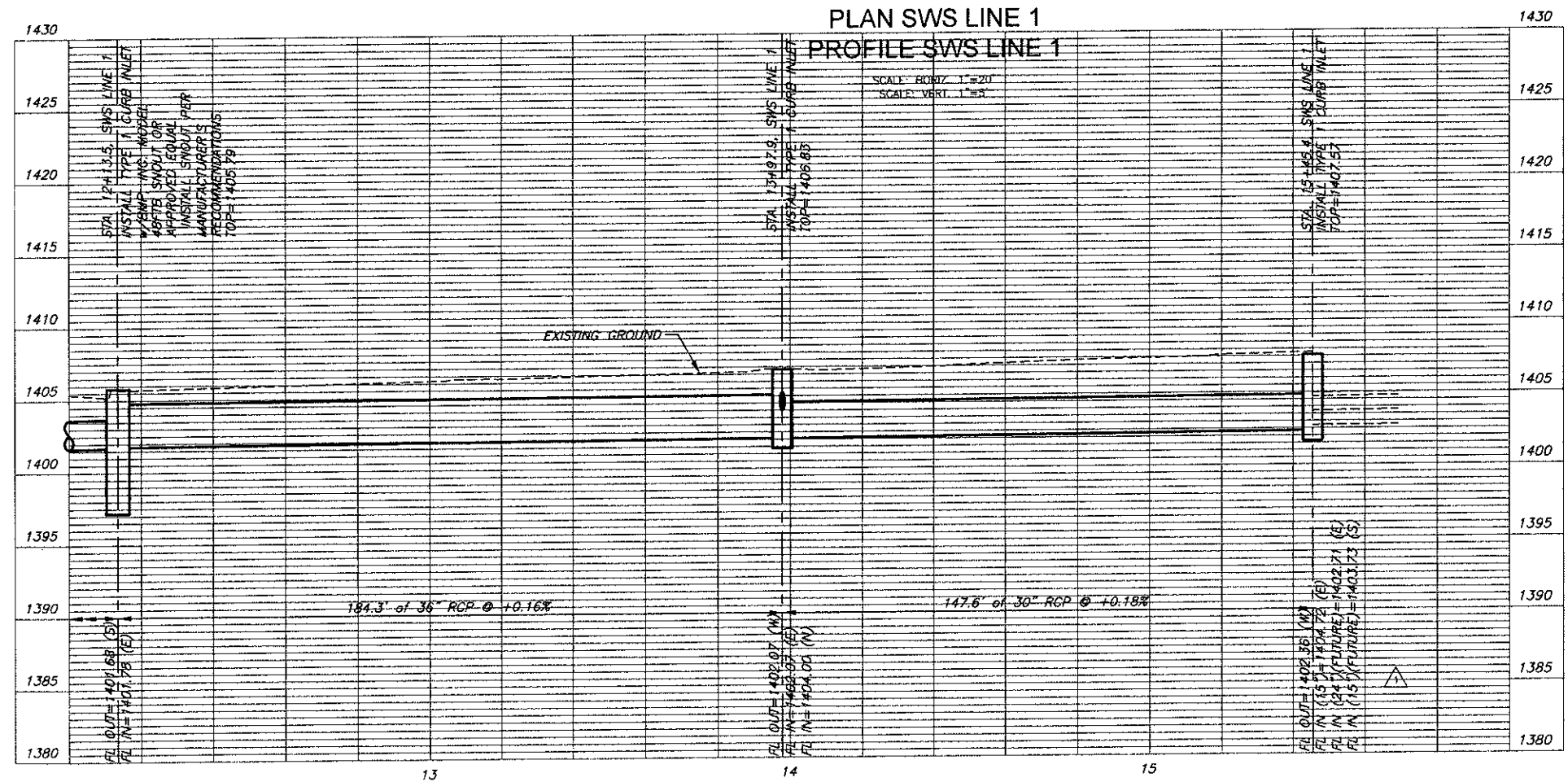


PLotted: Friday, July 07, 2017 9:30:34 AM



Revised sheet



STORM WATER SEWER PLAN FOR  
**17TH STREET BETWEEN HILLSIDE & OLIVER**  
 WICHITA, KS

©2017 MKEC Engineering All Rights Reserved  
 These drawings and their contents, including but not limited to all concepts, designs & ideas are the exclusive property of MKEC Engineering (MKEC), and may not be used or reproduced in any way without the express consent of MKEC.

**STORM SEWER PLAN & PROFILE**

PROJECT NO.	472-85215	
DATE	5/3/2017	
SCALE	1"=20'	
DESIGNED	JRA	
DRAWN	WNJ	
CHECKED	BLB	
NO.	REVISION	DATE
1	REVISED SWS	7/7/17

SHEET NO.  
 20 OF 54

J:\PROJECTS\2016\160104017L\_CON\_L17H STREETS RESUB\_160177 CADSWIS1306 CIVL\SWIS15\770302.DWG