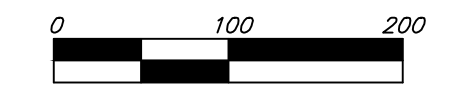


# TURKEY CREEK 3RD ADDITION WICHITA, SEDGWICK COUNTY, KANSAS

BOARD OF COUNTY COMMISSIONERS  
OF SEDGWICK COUNTY, KANSAS  
(DOC.#/FLM-PC. 28758025)

BOARD OF COUNTY COMMISSIONERS  
OF SEDGWICK COUNTY, KANSAS  
(DOC.#/FLM-PC. 28758025)

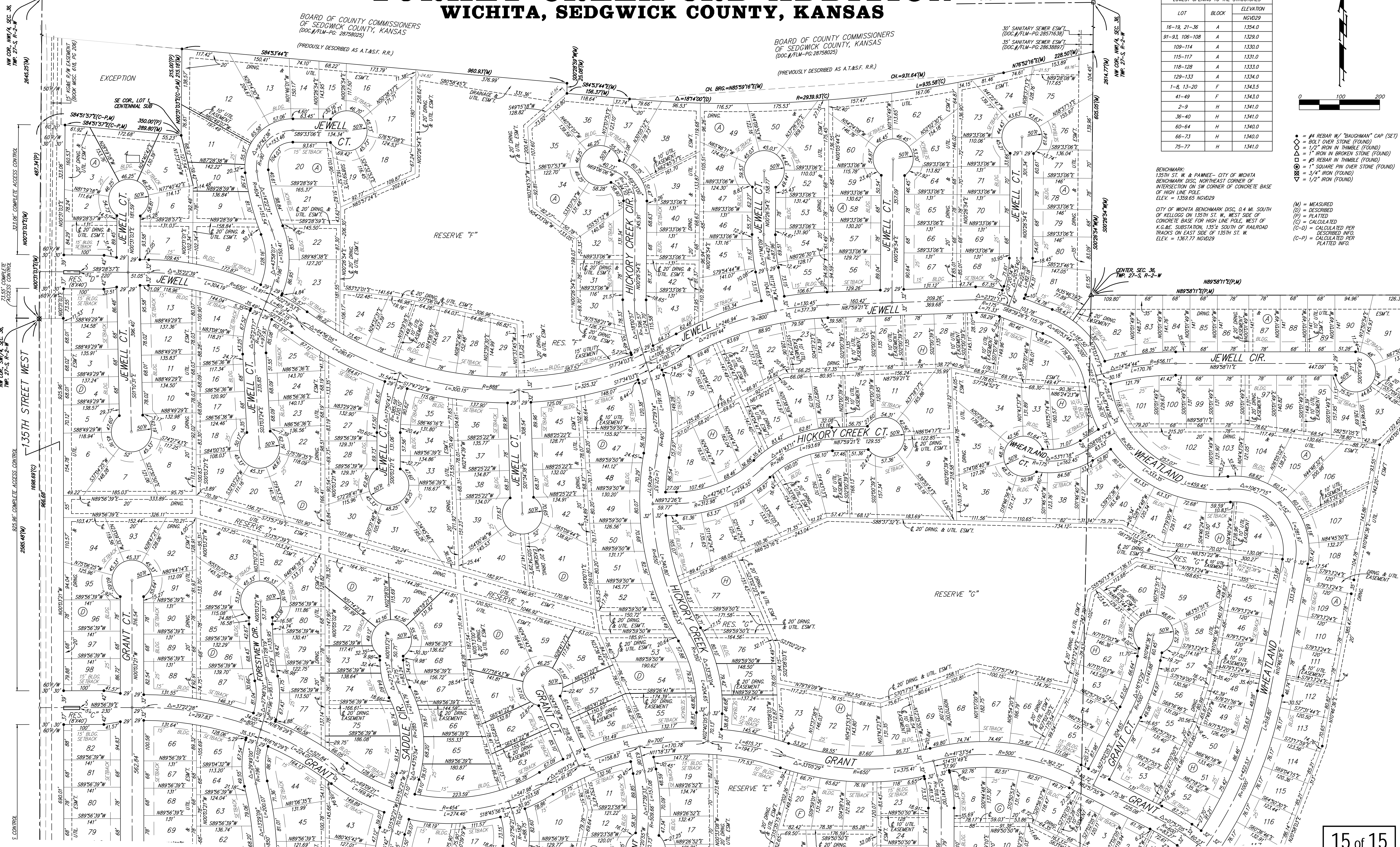
| LOT            | BLOCK | ELEVATION |
|----------------|-------|-----------|
| 16-19, 21-36   | A     | 1354.0    |
| 91-93, 106-108 | A     | 1329.0    |
| 109-114        | A     | 1330.0    |
| 115-117        | A     | 1331.0    |
| 118-128        | A     | 1333.0    |
| 129-133        | A     | 1334.0    |
| 1-8, 13-20     | F     | 1343.5    |
| 41-49          | F     | 1343.0    |
| 2-9            | H     | 1341.0    |
| 36-40          | H     | 1341.0    |
| 60-64          | H     | 1340.0    |
| 66-73          | H     | 1340.0    |
| 75-77          | H     | 1341.0    |



- = #4 REBAR W/ "BAUGHMAN" CAP (SET)
- = BOLT OVER STONE (FOUND)
- = 1 1/2" IRON IN THIMBLE (FOUND)
- = 1" IRON IN BROKEN STONE (FOUND)
- = #5 REBAR IN THIMBLE (FOUND)
- = 1" SQUARE PIN OVER STONE (FOUND)
- = 3/4" IRON (FOUND)
- = 1/2" IRON (FOUND)

BENCHMARK:  
135TH ST. W. & PAWNEE - CITY OF WICHITA  
BENCHMARK DISC. NORTHEAST CORNER OF  
CONCRETE BASE FOR HIGH LINE POLE, WEST  
OF K.G.R.E. SUBSTATION, 135 1/4 SOUTH OF RAILROAD  
TRACKS ON EAST SIDE OF 135TH ST. W.  
ELEV. = 1359.65 NGVD29

CITY OF WICHITA BENCHMARK DISC. 0.4 MI. SOUTH  
OF KELLOGG ON 135TH ST. W., WEST SIDE OF  
CONCRETE BASE FOR HIGH LINE POLE, WEST  
OF K.G.R.E. SUBSTATION, 135 1/4 SOUTH OF RAILROAD  
TRACKS ON EAST SIDE OF 135TH ST. W.  
ELEV. = 1367.77 NGVD29



NOTE:  
A master grading plan for drainage has been developed for this subdivision and is on file with the City of Wichita, Kansas. All drainage easements, right-of-ways, or reserves shall remain at established grades or as modified with the approval of the City Engineer of the City of Wichita, Kansas. No obstructions which impede the flow of this drainage system shall be allowed.

FOR INFORMATION ONLY

**Baughman Company, P.A.**  
315 Ellis St. Wichita, KS 67211 P 316-263-2171 F 316-263-0149  
ENGINEERING | SURVEYING | PLANNING | LANDSCAPE ARCHITECTURE

E:\PLAT\TURKEYCREEK3RD\DWG\TURKEY3F.DWG\GCG