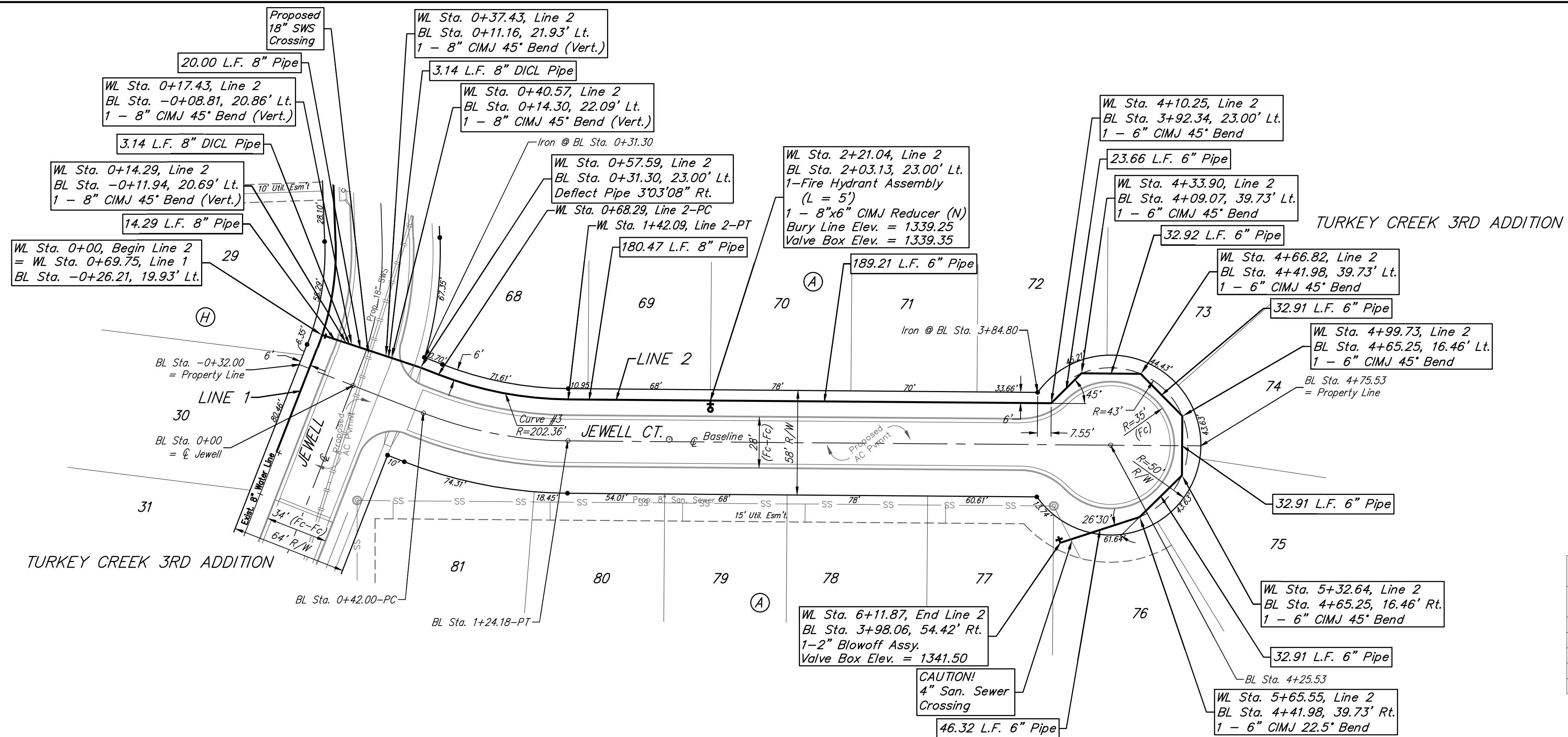


BENCHMARKS:

BM #1: "□" Cut in top of curb, south of SE corner of Lot 82, Block A, Turkey Creek 3rd Addition. Elev. = 1335.49 NGVD29

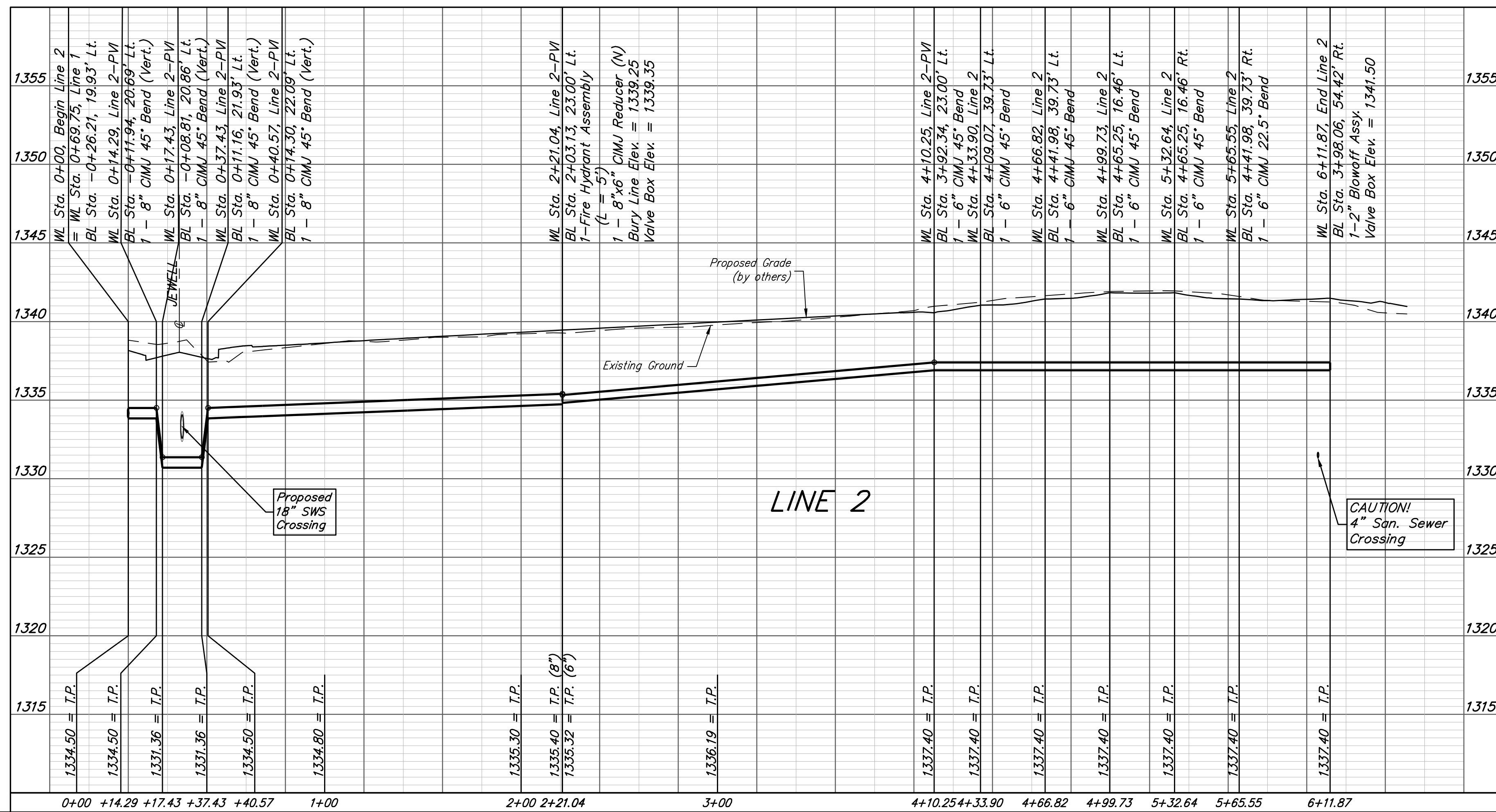
BM #2: "□" Cut on top of curb inlet, SW of the SE corner of Lot 81, Block A, Turkey Creek 3rd Addition. Elev. = 1335.95 NGVD29

BM #3: "□" Cut on top of yard inlet, 5' N & 43.5' E of the SE corner of Lot 28, Block H, Turkey Creek 3rd Addition. Elev. = 1335.95 NGVD29



Curve #3
Curve Data Based on Centerline of Pipe
Rad. = 202.36' Delta = 20°53'40" Tangent = 37.31'
Arc = 73.80' L.C. = 73.39' Def./Ft. = 8.49368 Min.

Station	Arc	Chord	Defl.	Total Defl.
0+68.29	-	-	0°00'00"	0°00'00"
0+75.00	6.71'	6.44'	0°57'00"	0°57'00"
1+00.00	25.00'	24.00'	3°32'20"	4°29'20"
1+25.00	25.00'	24.00'	3°32'21"	8°01'41"
1+42.09	17.09'	16.41'	2°25'09"	10°26'50"



Baughman Turkey Creek 3rd Addition - Phase 3B
LINE 2
Water Distribution System

Baughman Company, P.A. 315 Ellis St. Wichita, KS 67211 P 316-262-7271 F 316-262-0149
ENGINEERING | SURVEYING | PLANNING | LANDSCAPE ARCHITECTURE

PROJECT NUMBER 448-90683	DESIGN NWB	DRAWN JAK
REVISIONS:	APPROVED	DATE 4/18/18
	SCALE Noted	SHEET 5 OF 15

C:\Projects\Turkey Creek 3rd\Engineering\Phase 3B\Wtr_18-02-E931\WTR PLANS.dwg